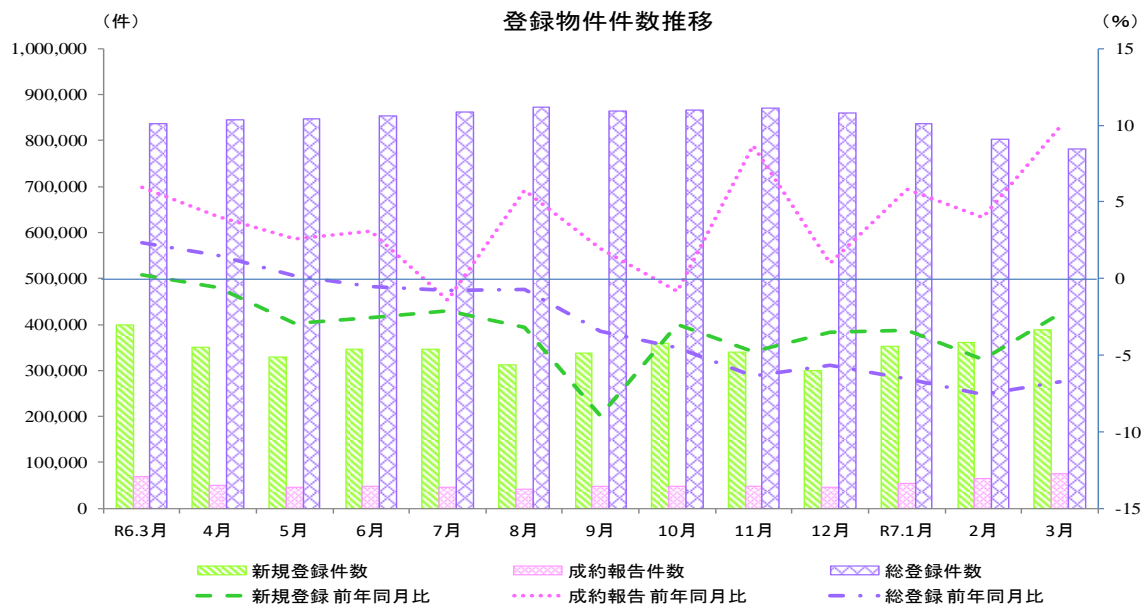


指定流通機構の活用状況について (令和7年3月分)

1. 概況

令和7年3月の指定流通機構の活用状況をみると、新規登録件数は388,978件と前年同月比で12ヶ月連続してマイナスとなり、前月比では3ヶ月連続してプラスとなった。成約報告件数は74,980件と前年同月比で5ヶ月連続してプラスとなり、前月比では3ヶ月連続してプラスとなった。総登録件数は781,116件と前年同月比で10ヶ月連続してマイナスとなり、前月比では4ヶ月連続してマイナスとなった。



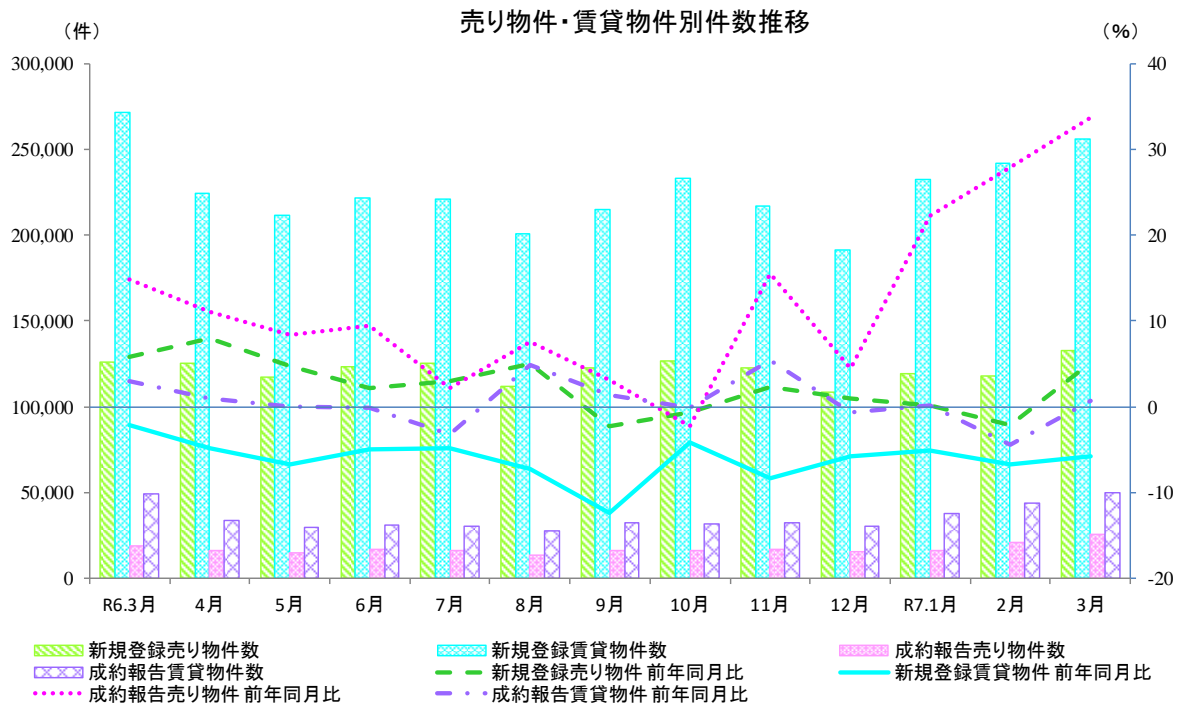
物件件数の推移

	R6.3月	4月	5月	6月	7月	8月	9月	10月	11月	12月	R7.1月	2月	3月
新規登録件数(件)	398,141	349,618	328,791	345,321	345,963	312,635	337,793	359,914	339,987	299,292	351,867	359,959	388,978
前年同月比(%)	0.2	▲0.6	▲2.9	▲2.5	▲2.1	▲3.2	▲8.9	▲3.0	▲4.7	▲3.5	▲3.4	▲5.3	▲2.3
前月比(%)	4.8	▲12.2	▲6.0	5.0	0.2	▲9.6	8.0	6.5	▲5.5	▲12.0	17.6	2.3	8.1
成約報告件数(件)	68,227	50,262	44,925	48,165	46,729	41,087	48,713	48,011	48,900	45,980	53,957	64,863	74,980
前年同月比(%)	6.0	4.1	2.6	3.1	▲1.4	5.7	1.9	▲0.8	8.7	1.0	5.8	4.0	9.9
前月比(%)	9.4	▲26.3	▲10.6	7.2	▲3.0	▲12.1	18.6	▲1.4	1.9	▲6.0	17.3	20.2	15.6
総登録件数(件)	837,673	845,147	848,370	853,736	862,008	872,663	864,906	866,708	870,979	859,860	837,892	803,339	781,116
前年同月比(%)	2.3	1.5	0.2	▲0.5	▲0.8	▲0.7	▲3.4	▲4.5	▲6.4	▲5.6	▲6.5	▲7.6	▲6.8
前月比(%)	▲3.6	0.9	0.4	0.6	1.0	1.2	▲0.9	0.2	0.5	▲1.3	▲2.6	▲4.1	▲2.8

2. 売り・賃貸別物件数

令和7年3月の売り物件数をみると、新規登録件数は132,693件と前年同月比で再びプラスに転じ、前月比でも再びプラスに転じた。成約報告件数は25,411件と前年同月比で5ヶ月連続してプラスとなり、前月比では3ヶ月連続してプラスとなった。総登録件数は416,924件と前年同月比で34ヶ月連続してプラスとなり、前月比では2ヶ月連続してマイナスとなった。

令和7年3月の賃貸物件数をみると、新規登録件数は256,285件と前年同月比で37ヶ月連続してマイナスとなり、前月比では3ヶ月連続してプラスとなった。成約報告件数は49,569件と前年同月比で再びプラスに転じ、前月比では3ヶ月連続してプラスとなった。総登録件数は364,142件と前年同月比で31ヶ月連続してマイナスとなり、前月比では4ヶ月連続してマイナスとなった。



R7年3月 売り物件・賃貸物件別件数

新規登録件数	388,978 件	前年同月比 ▲ 2.3 %	➡ 前月比 8.1 %	➡
売り物件	132,693 件	前年同月比 5.1 %	➡ 前月比 12.3 %	⬆
賃貸物件	256,285 件	前年同月比 ▲ 5.7 %	➡ 前月比 6.0 %	➡
成約報告件数	74,980 件	前年同月比 9.9 %	➡ 前月比 15.6 %	⬆
売り物件	25,411 件	前年同月比 33.7 %	⬆ 前月比 22.4 %	⬆
賃貸物件	49,569 件	前年同月比 0.7 %	➡ 前月比 12.4 %	⬆
総登録件数	781,116 件	前年同月比 ▲ 6.8 %	➡ 前月比 ▲ 2.8 %	➡
売り物件	416,924 件	前年同月比 1.0 %	➡ 前月比 ▲ 1.6 %	➡
賃貸物件	364,192 件	前年同月比 ▲ 14.3 %	⬇ 前月比 ▲ 4.1 %	➡

凡例: ⬆ 10% ~ ⬆ 3% ~ 10% ➡ -3% ~ 3% ➡ -10% ~ -3% ⬇ ~ -10%

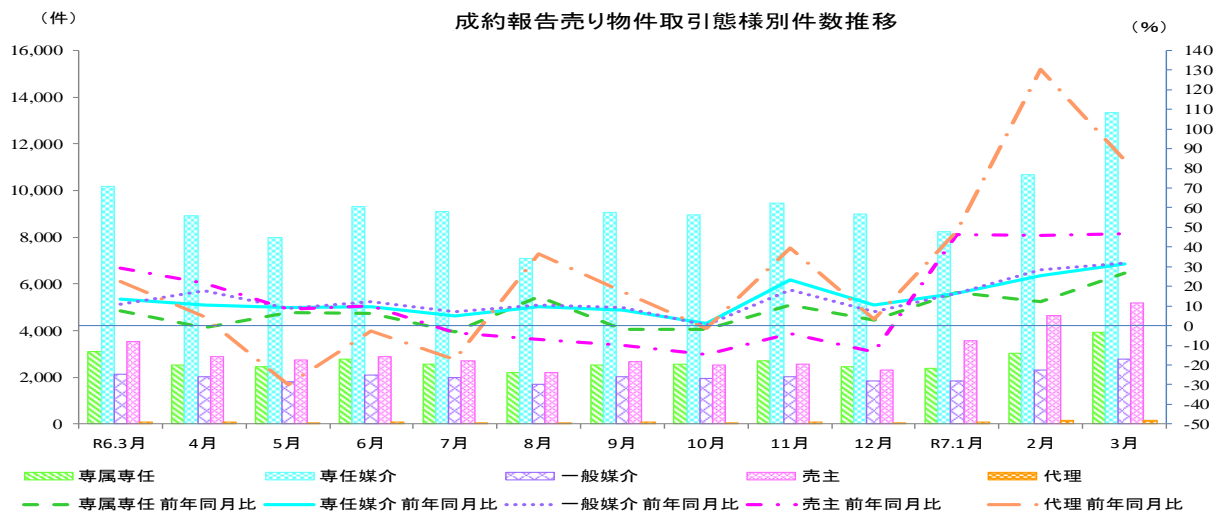
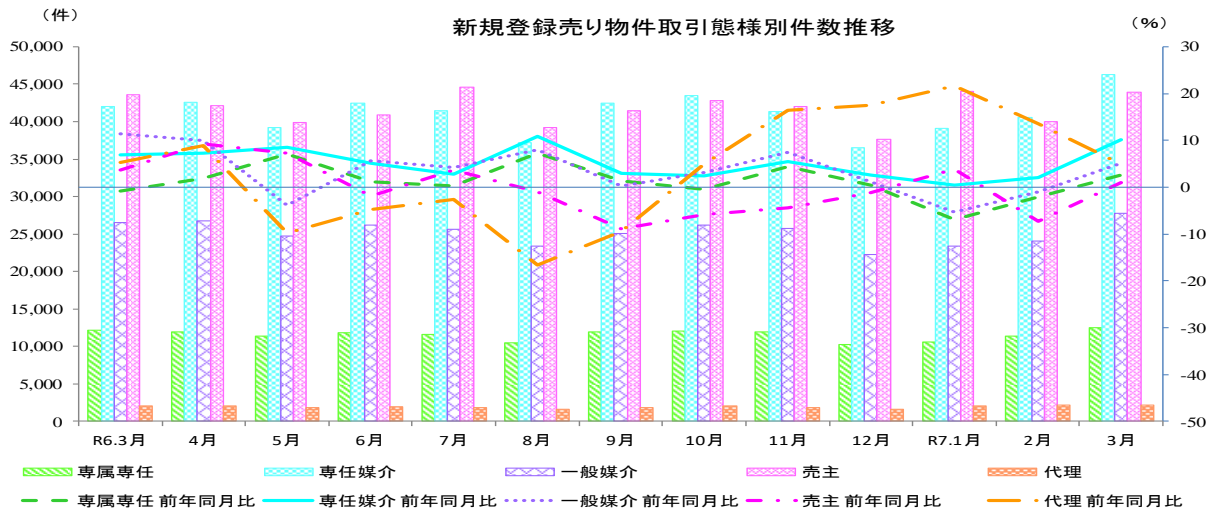
3. 売り物件の取引態様別物件数

令和7年3月の新規登録売り物件の取引態様別をみると、専任媒介が最も多く34.9%を占め、次いで売主が33.1%、一般媒介が21.0%を占めている。成約報告売り物件の取引態様別をみると、専任媒介が最も多く52.5%を占め、次いで売主が20.4%、専属専任が15.5%を占めている。

R7年3月 売り物件の取引態様別件数

	取引態様	件数	構成比	前年同月比	前月比
新規登録件数	媒介契約	86,588 件	65.3 %	7.3 % ↗	13.8 % ↑
	専属専任	12,510 件	9.4 %	2.5 % →	10.1 % ↑
	専任媒介	46,261 件	34.9 %	10.1 % ↑	13.9 % ↑
	一般媒介	27,817 件	21.0 %	5.1 % ↗	15.4 % ↑
	売主	43,969 件	33.1 %	1.0 % →	9.9 % ↗
	代理	2,136 件	1.6 %	4.9 % ↗	0.8 % →
成約報告件数	媒介契約	20,074 件	79.0 %	30.4 % ↑	25.6 % ↑
	専属専任	3,935 件	15.5 %	26.7 % ↑	30.6 % ↑
	専任媒介	13,346 件	52.5 %	31.3 % ↑	25.1 % ↑
	一般媒介	2,793 件	11.0 %	31.9 % ↑	21.2 % ↑
	売主	5,186 件	20.4 %	46.9 % ↑	12.0 % ↑
	代理	151 件	0.6 %	84.1 % ↑	4.1 % ↗

凡例: ↑ 10% ~ ↗ 3% ~ 10% → -3% ~ 3% ↘ -10% ~ -3% ↓ ~ -10%



指定流通機構実態調査集計、総括表 新規登録件数

		総 数	物 件 種 別					
			マンション	一 戸 建	土 地	住宅外全部	住宅外一部	
全	総計件数 [前月比]	388,978 [8.1]	263,826 [5.7]	54,767 [9.6]	35,955 [17.1]	11,060 [10.6]	23,370 [18.5]	
売 地 り 域 物 別 件 別	総 計 [前月比]	132,693 [12.3]	43,518 [11.6]	45,180 [9.6]	35,013 [16.9]	8,225 [11.7]	757 [13.3]	
	北海道 [前月比]	4,334 [21.2]	1,370 [3.8]	1,272 [30.3]	1,275 [35.1]	404 [27.0]	13 [-23.5]	
	東北 [前月比]	5,181 [18.2]	903 [17.4]	1,873 [8.8]	2,022 [29.9]	363 [11.7]	20 [66.7]	
	関東甲信越 [前月比]	7,325 [13.7]	532 [-3.8]	2,718 [9.7]	3,431 [22.0]	626 [6.1]	18 [50.0]	
	首都圏 [前月比]	59,042 [10.4]	25,841 [11.2]	18,292 [8.1]	10,752 [10.0]	3,665 [16.2]	492 [23.3]	
	中部4県 [前月比]	4,454 [17.8]	559 [10.5]	1,722 [23.3]	1,835 [18.7]	328 [2.5]	10 [-23.1]	
	中部圏 [前月比]	9,666 [12.2]	2,214 [20.1]	3,179 [13.1]	3,696 [9.5]	561 [-0.9]	16 [-15.8]	
	近畿圏 [前月比]	24,163 [5.3]	8,356 [14.6]	9,415 [1.0]	5,097 [0.4]	1,156 [5.9]	139 [-11.5]	
	中国 [前月比]	5,214 [34.9]	682 [16.4]	1,968 [22.1]	2,256 [60.3]	300 [17.2]	8 [166.7]	
	四国 [前月比]	2,015 [32.0]	239 [-16.1]	719 [44.4]	928 [52.1]	127 [5.0]	2 [-83.3]	
	九州 [前月比]	11,299 [17.8]	2,822 [7.8]	4,022 [15.8]	3,721 [30.4]	695 [11.7]	39 [62.5]	
	取 引 態 様 別	専属専任 [前月比]	12,510 [10.1]	4,424 [6.1]	3,694 [4.6]	3,374 [23.3]	975 [9.9]	43 [10.3]
		専任媒介 [前月比]	46,261 [13.9]	15,138 [15.1]	14,768 [11.1]	13,589 [16.9]	2,565 [8.8]	201 [14.2]
		一般媒介 [前月比]	27,817 [15.4]	7,656 [4.3]	8,339 [16.6]	8,904 [29.1]	2,733 [6.6]	185 [14.9]
		売主 [前月比]	43,969 [9.9]	15,362 [14.1]	17,935 [7.7]	8,710 [5.1]	1,648 [24.5]	314 [13.8]
		代理 [前月比]	2,136 [0.8]	938 [7.2]	444 [-25.0]	436 [7.9]	304 [30.5]	14 [-12.5]
	賃 地 賃 域 物 別	総 計 [前月比]	256,285 [6.0]	220,308 [4.6]	9,587 [9.2]	942 [25.6]	2,835 [7.5]	22,613 [18.7]
		北海道 [前月比]	1,672 [3.9]	1,512 [-1.8]	22 [0.0]	7 [600.0]	26 [160.0]	105 [191.7]
		東北 [前月比]	6,191 [13.1]	5,461 [11.3]	231 [7.9]	42 [50.0]	63 [23.5]	394 [41.7]
関東甲信越 [前月比]		8,359 [12.6]	7,215 [10.9]	378 [23.9]	75 [25.0]	140 [34.6]	551 [22.7]	
首都圏 [前月比]		172,293 [3.9]	152,082 [3.0]	5,167 [11.1]	325 [17.8]	1,111 [0.1]	13,608 [12.3]	
中部4県 [前月比]		2,630 [8.2]	1,779 [4.5]	228 [14.6]	40 [66.7]	82 [-24.8]	501 [26.2]	
中部圏 [前月比]		4,205 [23.1]	2,995 [26.5]	242 [18.0]	84 [-15.2]	140 [40.0]	744 [15.3]	
近畿圏 [前月比]		48,850 [9.5]	40,063 [7.5]	2,403 [3.5]	199 [32.7]	945 [9.8]	5,240 [30.7]	
中国 [前月比]		1,882 [2.5]	1,184 [0.0]	265 [-4.3]	37 [23.3]	58 [-17.1]	338 [22.9]	
四国 [前月比]		767 [14.5]	469 [17.3]	86 [-14.0]	30 [57.9]	41 [64.0]	141 [11.9]	
九州 [前月比]		9,436 [12.0]	7,548 [8.4]	565 [16.3]	103 [63.5]	229 [16.2]	991 [37.4]	

* 前月比欄の数値は、対前月増減率である。
 * 「関東甲信越」は、茨城県・栃木県・群馬県・新潟県・山梨県・長野県、「首都圏」は、東京都・千葉県・埼玉県・神奈川県、「中部圏」は、愛知県・岐阜県・三重県、「中部4県」は、富山県・石川県・福井県・静岡県、「近畿圏」は、大阪府・京都府・兵庫県・滋賀県・奈良県・和歌山県をいう。

指定流通機構実態調査 売り物件・新規登録件数 時系列表

	6年3月	6年4月	6年5月	6年6月	6年7月	6年8月	6年9月	6年10月	6年11月	6年12月	7年1月	7年2月	7年3月	一年間計
	件数 (前月比) [前年比]	件数 (前月比) [前年比]	件数 (前月比) [前年比]	件数 (前月比) [前年比]	件数 (前月比) [前年比]	件数 (前月比) [前年比]	件数 (前月比) [前年比]	件数 (前月比) [前年比]	件数 (前月比) [前年比]	件数 (前月比) [前年比]	件数 (前月比) [前年比]	件数 (前月比) [前年比]	件数 (前月比) [前年比]	件数 (構成比)
総数	126,273 (4.5) [5.8]	125,446 (-0.7) [7.9]	117,118 (-6.6) [4.7]	123,295 (5.3) [2.2]	125,209 (1.6) [3.0]	111,820 (-10.7) [5.0]	122,933 (9.9) [-2.2]	126,493 (2.9) [-0.6]	122,871 (-2.9) [2.3]	108,210 (-11.9) [0.9]	119,103 (10.1) [0.1]	118,208 (-0.8) [-2.1]	132,693 (12.3) [5.1]	1,453,399
北海道	4,111 (6.2) [0.2]	4,606 (12.0) [7.5]	4,203 (-8.7) [-1.6]	4,537 (7.9) [-4.4]	4,779 (5.3) [0.8]	4,227 (-11.6) [6.1]	4,631 (9.6) [-5.6]	4,497 (-2.9) [-8.1]	4,055 (-9.8) [-14.3]	3,670 (-9.5) [-6.9]	3,764 (2.6) [-5.0]	3,575 (-5.0) [-7.6]	4,334 (21.2) [5.4]	50,878 (3.5)
東北	5,032 (9.5) [26.3]	4,512 (-10.3) [3.6]	4,484 (-0.6) [-1.3]	4,951 (10.4) [10.0]	5,159 (4.2) [12.9]	4,623 (-10.4) [10.9]	4,894 (5.9) [4.7]	4,974 (1.6) [2.6]	4,891 (-1.7) [14.1]	4,384 (-10.4) [9.0]	4,359 (-0.6) [8.2]	4,384 (0.6) [-4.6]	5,181 (18.2) [3.0]	56,796 (3.9)
関東甲信越	6,827 (14.5) [9.5]	6,481 (-5.1) [1.0]	6,518 (0.6) [-4.5]	6,778 (4.0) [-1.2]	7,143 (5.4) [4.2]	6,207 (-13.1) [0.1]	6,680 (7.6) [-9.6]	6,915 (3.5) [-4.8]	6,867 (-0.7) [7.2]	6,320 (-8.0) [3.0]	6,413 (1.5) [1.1]	6,445 (0.5) [8.1]	7,325 (13.7) [7.3]	80,092 (5.5)
域 首都圏	58,982 (1.4) [3.0]	58,612 (-0.6) [6.2]	53,772 (-8.3) [7.0]	56,541 (5.1) [-1.0]	57,230 (1.2) [-1.6]	50,117 (-12.4) [-0.5]	56,529 (12.8) [-3.8]	58,283 (3.1) [-3.3]	56,064 (-3.8) [-2.4]	48,402 (-13.7) [-1.2]	54,490 (12.6) [-2.6]	53,487 (-1.8) [-8.0]	59,042 (10.4) [0.1]	662,569 (45.6)
別 中部4県	4,691 (8.9) [1.4]	5,020 (7.0) [13.2]	4,414 (-12.1) [-7.4]	4,666 (5.7) [5.1]	5,107 (9.5) [10.2]	4,132 (-19.1) [-4.0]	4,170 (0.9) [-7.5]	5,218 (25.1) [8.2]	4,650 (-10.9) [3.6]	3,700 (-20.4) [-10.8]	4,165 (12.6) [-4.1]	3,782 (-9.2) [-12.2]	4,454 (17.8) [-5.1]	53,478 (3.7)
内 中部圏	9,139 (8.9) [6.6]	9,303 (1.8) [11.5]	8,147 (-12.4) [-0.9]	8,390 (3.0) [1.7]	8,837 (5.3) [5.0]	7,872 (-10.9) [7.8]	8,422 (7.0) [-7.8]	8,739 (3.8) [-3.8]	8,914 (2.0) [6.0]	8,102 (-9.1) [-0.2]	8,309 (2.6) [-5.4]	8,616 (3.7) [2.6]	9,666 (12.2) [5.8]	103,317 (7.1)
近畿圏	22,303 (4.6) [11.4]	21,772 (-2.4) [12.3]	20,294 (-6.8) [11.5]	20,818 (2.6) [5.1]	21,732 (4.4) [7.3]	19,578 (-9.9) [13.1]	22,249 (13.6) [4.3]	21,828 (-1.9) [1.6]	21,918 (0.4) [9.9]	19,615 (-10.5) [8.4]	21,834 (11.3) [4.4]	22,938 (5.1) [7.6]	24,163 (5.3) [8.3]	258,739 (17.8)
中国	3,616 (2.9) [-4.2]	3,935 (8.8) [11.5]	3,667 (-6.8) [5.7]	3,650 (-0.5) [2.0]	3,955 (8.4) [11.7]	3,368 (-14.8) [8.1]	4,033 (19.7) [11.4]	4,090 (1.4) [12.1]	3,880 (-5.1) [7.0]	3,451 (-11.1) [6.4]	3,777 (9.4) [3.2]	3,864 (2.3) [10.0]	5,214 (34.9) [44.2]	46,884 (3.2)
四国	1,504 (13.1) [-25.2]	1,428 (-5.1) [5.3]	2,244 (57.1) [49.1]	3,424 (52.6) [58.5]	1,496 (-56.3) [7.9]	2,133 (42.6) [66.5]	1,459 (-31.6) [-27.2]	2,124 (45.6) [46.0]	1,553 (-26.9) [7.4]	1,519 (-2.2) [-18.6]	2,206 (45.2) [74.1]	1,526 (-30.8) [14.7]	2,015 (32.0) [34.0]	23,127 (1.6)
九州	10,068 (7.8) [15.4]	9,777 (-2.9) [9.1]	9,375 (-4.1) [-4.3]	9,540 (1.8) [3.8]	9,771 (2.4) [8.9]	9,563 (-2.1) [13.6]	9,866 (3.2) [5.2]	9,825 (-0.4) [3.3]	10,079 (2.6) [8.5]	9,047 (-10.2) [4.5]	9,786 (8.2) [0.5]	9,591 (-2.0) [2.7]	11,299 (17.8) [12.2]	117,519 (8.1)
取 専属専任媒介	12,202 (5.1) [-0.8]	11,917 (-2.3) [1.9]	11,368 (-4.6) [7.0]	11,866 (4.4) [1.1]	11,629 (-2.0) [0.3]	10,452 (-10.1) [7.2]	11,965 (14.5) [1.3]	12,087 (1.0) [-0.4]	11,892 (-1.6) [4.3]	10,199 (-14.2) [0.4]	10,586 (3.8) [-6.9]	11,363 (7.3) [-2.1]	12,510 (10.1) [2.5]	137,834 (9.5)
引 専任媒介	42,016 (5.6) [6.9]	42,836 (1.5) [7.2]	39,270 (-7.9) [8.4]	42,430 (8.0) [5.1]	41,410 (-2.4) [2.7]	37,244 (-10.1) [10.8]	42,510 (14.1) [2.9]	43,454 (2.2) [2.4]	41,394 (-4.7) [5.5]	36,503 (-11.8) [0.4]	39,064 (7.0) [2.0]	40,606 (3.9) [2.0]	46,261 (13.9) [10.1]	492,782 (33.9)
態 一般媒介	26,479 (8.8) [11.4]	26,769 (1.1) [10.0]	24,753 (-7.5) [-3.9]	26,161 (5.7) [5.6]	25,680 (-1.8) [4.1]	23,359 (-9.0) [8.0]	25,107 (7.5) [0.2]	26,160 (4.2) [3.1]	25,730 (-1.6) [7.5]	22,244 (-13.5) [1.1]	23,334 (4.9) [-5.3]	24,113 (3.3) [-0.9]	27,817 (15.4) [5.1]	301,227 (20.7)
別 売主	43,540 (0.9) [3.6]	42,097 (-3.3) [9.2]	39,898 (-5.2) [7.2]	40,930 (2.6) [-2.0]	44,599 (9.0) [3.7]	39,198 (-12.1) [-1.1]	41,475 (5.8) [-8.8]	42,788 (3.2) [-5.8]	41,968 (-1.9) [-4.4]	37,606 (-10.4) [-1.2]	44,014 (17.0) [3.9]	40,006 (-9.1) [-7.3]	43,969 (9.9) [1.0]	498,548 (34.3)
代理	2,036 (9.1) [5.2]	2,027 (-0.4) [8.8]	1,829 (-9.8) [-9.9]	1,908 (4.3) [-4.8]	1,891 (-0.9) [-2.6]	1,567 (-17.1) [-16.6]	1,876 (19.7) [-9.4]	2,004 (6.8) [5.0]	1,887 (-5.8) [16.5]	1,658 (-12.1) [17.4]	2,105 (27.0) [21.7]	2,120 (0.7) [13.6]	2,136 (0.8) [4.9]	23,008 (1.6)
物 マンション	44,079 (4.0) [0.3]	43,425 (-1.5) [2.0]	39,449 (-9.2) [0.7]	41,372 (4.9) [-3.2]	40,708 (-1.6) [-6.2]	36,377 (-10.6) [-2.3]	41,362 (13.7) [-4.9]	41,855 (1.2) [-4.0]	40,115 (-4.2) [-3.0]	35,685 (-11.0) [-2.4]	38,810 (8.8) [-6.8]	39,009 (0.5) [-8.0]	43,518 (11.6) [-1.3]	481,685 (33.1)
件 一戸建	42,443 (3.1) [7.9]	41,345 (-2.6) [11.5]	39,074 (-5.5) [8.3]	41,321 (5.8) [3.4]	43,840 (6.1) [8.1]	38,426 (-12.3) [6.8]	41,988 (9.3) [-2.7]	42,485 (1.2) [-2.6]	42,252 (-0.5) [2.0]	37,337 (-11.6) [0.6]	41,356 (10.8) [4.0]	41,211 (-0.4) [0.1]	45,180 (9.6) [6.4]	495,815 (34.1)
種 土地	32,088 (7.1) [10.2]	32,885 (2.5) [11.1]	30,920 (-6.0) [2.0]	32,913 (6.4) [6.7]	32,744 (-0.5) [7.0]	29,983 (-8.4) [10.6]	31,449 (4.9) [-1.8]	33,652 (7.0) [3.2]	32,478 (-3.5) [7.2]	27,992 (-13.8) [2.1]	30,889 (10.3) [0.0]	29,955 (-3.0) [0.0]	35,013 (16.9) [9.1]	380,873 (26.2)
別 住宅外(全部)	7,047 (6.4) [13.4]	7,184 (1.9) [13.0]	7,066 (-1.6) [24.5]	7,121 (0.8) [11.3]	7,251 (1.8) [12.9]	6,423 (-11.4) [14.1]	7,446 (15.9) [16.1]	7,885 (5.9) [15.9]	7,349 (-6.8) [14.0]	6,665 (-9.3) [19.2]	7,401 (11.0) [20.9]	7,365 (-0.5) [11.2]	8,225 (11.7) [16.7]	87,381 (6.0)
住宅外(一部)	616 (-6.0) [-11.9]	607 (-1.5) [-5.5]	609 (0.3) [0.0]	568 (-6.7) [-19.9]	666 (17.3) [23.7]	611 (-8.3) [6.7]	688 (12.6) [-9.5]	616 (-10.5) [16.3]	677 (9.9) [0.8]	531 (-21.6) [5.0]	647 (21.8) [2.0]	668 (3.2) [2.0]	757 (13.3) [22.9]	7,645 (0.5)

※ 構成比は、四捨五入による端数処理のため内数の合計が100%にならないことがある

指定流通機構実態調査集計、総括表 地域別取引態様別売物件月間新規登録件数

地域	取引態様	総数	物 件 種 別				
			マンション	一戸建	土地	住宅外全部	住宅外一部
北海道	専属専任 [構成比]	335 [7.7]	113 [8.2]	73 [5.7]	106 [8.3]	43 [10.6]	0 [0.0]
	専任媒介 [構成比]	1,996 [46.1]	467 [34.1]	659 [51.8]	677 [53.1]	187 [46.3]	6 [46.2]
	一般媒介 [構成比]	929 [21.4]	161 [11.8]	256 [20.1]	372 [29.2]	133 [32.9]	7 [53.8]
	売主 [構成比]	1,059 [24.4]	626 [45.7]	281 [22.1]	113 [8.9]	39 [9.7]	0 [0.0]
	代理 [構成比]	15 [0.3]	3 [0.2]	3 [0.2]	7 [0.5]	2 [0.5]	0 [0.0]
	合計 [地域比]	4,334 [3.3]	1,370 [3.1]	1,272 [2.8]	1,275 [3.6]	404 [4.9]	13 [1.7]
東北	専属専任 [構成比]	278 [5.4]	56 [6.2]	78 [4.2]	91 [4.5]	51 [14.0]	2 [10.0]
	専任媒介 [構成比]	1,862 [35.9]	300 [33.2]	640 [34.2]	787 [38.9]	132 [36.4]	3 [15.0]
	一般媒介 [構成比]	1,449 [28.0]	144 [15.9]	471 [25.1]	690 [34.1]	137 [37.7]	7 [35.0]
	売主 [構成比]	1,549 [29.9]	382 [42.3]	681 [36.4]	442 [21.9]	36 [9.9]	8 [40.0]
	代理 [構成比]	43 [0.8]	21 [2.3]	3 [0.2]	12 [0.6]	7 [1.9]	0 [0.0]
	合計 [地域比]	5,181 [3.9]	903 [2.1]	1,873 [4.1]	2,022 [5.8]	363 [4.4]	20 [2.6]
関東 東 信 越	専属専任 [構成比]	434 [5.9]	27 [5.1]	119 [4.4]	215 [6.3]	73 [11.7]	0 [0.0]
	専任媒介 [構成比]	2,582 [35.2]	245 [46.1]	999 [36.8]	1,135 [33.1]	190 [30.4]	13 [72.2]
	一般媒介 [構成比]	2,275 [31.1]	163 [30.6]	595 [21.9]	1,236 [36.0]	278 [44.4]	3 [16.7]
	売主 [構成比]	1,950 [26.6]	96 [18.0]	980 [36.1]	798 [23.3]	74 [11.8]	2 [11.1]
	代理 [構成比]	84 [1.1]	1 [0.2]	25 [0.9]	47 [1.4]	11 [1.8]	0 [0.0]
	合計 [地域比]	7,325 [5.5]	532 [1.2]	2,718 [6.0]	3,431 [9.8]	626 [7.6]	18 [2.4]
首都 圏	専属専任 [構成比]	4,794 [8.1]	2,372 [9.2]	1,048 [5.7]	973 [9.0]	377 [10.3]	24 [4.9]
	専任媒介 [構成比]	18,600 [31.5]	8,100 [31.3]	5,315 [29.1]	4,041 [37.6]	1,039 [28.3]	105 [21.3]
	一般媒介 [構成比]	7,603 [12.9]	3,552 [13.7]	1,660 [9.1]	1,340 [12.5]	953 [26.0]	98 [19.9]
	売主 [構成比]	26,604 [45.1]	11,101 [43.0]	9,980 [54.6]	4,208 [39.1]	1,063 [29.0]	252 [51.2]
	代理 [構成比]	1,441 [2.4]	716 [2.8]	289 [1.6]	190 [1.8]	233 [6.4]	13 [2.6]
	合計 [地域比]	59,042 [44.5]	25,841 [59.4]	18,292 [40.5]	10,752 [30.7]	3,665 [44.6]	492 [65.0]
中部 四 県	専属専任 [構成比]	420 [9.4]	22 [3.9]	133 [7.7]	217 [11.8]	48 [14.6]	0 [0.0]
	専任媒介 [構成比]	1,577 [35.4]	220 [39.4]	577 [33.5]	675 [36.8]	100 [30.5]	5 [50.0]
	一般媒介 [構成比]	1,465 [32.9]	195 [34.9]	540 [31.4]	588 [32.0]	140 [42.7]	2 [20.0]
	売主 [構成比]	924 [20.7]	99 [17.7]	459 [26.7]	325 [17.7]	38 [11.6]	3 [30.0]
	代理 [構成比]	68 [1.5]	23 [4.1]	13 [0.8]	30 [1.6]	2 [0.6]	0 [0.0]
	合計 [地域比]	4,454 [3.4]	559 [1.3]	1,722 [3.8]	1,835 [5.2]	328 [4.0]	10 [1.3]
中部 圏	専属専任 [構成比]	762 [7.9]	274 [12.4]	213 [6.7]	221 [6.0]	53 [9.4]	1 [6.3]
	専任媒介 [構成比]	3,544 [36.7]	906 [40.9]	978 [30.8]	1,477 [40.0]	177 [31.6]	6 [37.5]
	一般媒介 [構成比]	2,745 [28.4]	549 [24.8]	688 [21.6]	1,264 [34.2]	239 [42.6]	5 [31.3]
	売主 [構成比]	2,566 [26.5]	469 [21.2]	1,295 [40.7]	713 [19.3]	85 [15.2]	4 [25.0]
	代理 [構成比]	49 [0.5]	16 [0.7]	5 [0.2]	21 [0.6]	7 [1.2]	0 [0.0]
	合計 [地域比]	9,666 [7.3]	2,214 [5.1]	3,179 [7.0]	3,696 [10.6]	561 [6.8]	16 [2.1]
近畿 圏	専属専任 [構成比]	3,995 [16.5]	1,194 [14.3]	1,643 [17.5]	955 [18.7]	194 [16.8]	9 [6.5]
	専任媒介 [構成比]	8,013 [33.2]	3,105 [37.2]	2,739 [29.1]	1,792 [35.2]	334 [28.9]	43 [30.9]
	一般媒介 [構成比]	5,510 [22.8]	1,955 [23.4]	2,036 [21.6]	1,090 [21.4]	379 [32.8]	50 [36.0]
	売主 [構成比]	6,291 [26.0]	1,967 [23.5]	2,902 [30.8]	1,165 [22.9]	220 [19.0]	37 [26.6]
	代理 [構成比]	354 [1.5]	135 [1.6]	95 [1.0]	95 [1.9]	29 [2.5]	0 [0.0]
	合計 [地域比]	24,163 [18.2]	8,356 [19.2]	9,415 [20.8]	5,097 [14.6]	1,156 [14.1]	139 [18.4]
中 国	専属専任 [構成比]	293 [5.6]	27 [4.0]	90 [4.6]	138 [6.1]	38 [12.7]	0 [0.0]
	専任媒介 [構成比]	2,680 [51.4]	411 [60.3]	1,061 [53.9]	1,087 [48.2]	115 [38.3]	6 [75.0]
	一般媒介 [構成比]	1,478 [28.3]	137 [20.1]	533 [27.1]	695 [30.8]	111 [37.0]	2 [25.0]
	売主 [構成比]	739 [14.2]	107 [15.7]	281 [14.3]	321 [14.2]	30 [10.0]	0 [0.0]
	代理 [構成比]	24 [0.5]	0 [0.0]	3 [0.2]	15 [0.7]	6 [2.0]	0 [0.0]
	合計 [地域比]	5,214 [3.9]	682 [1.6]	1,968 [4.4]	2,256 [6.4]	300 [3.6]	8 [1.1]
四 国	専属専任 [構成比]	213 [10.6]	19 [7.9]	69 [9.6]	104 [11.2]	19 [15.0]	2 [100.0]
	専任媒介 [構成比]	635 [31.5]	117 [49.0]	186 [25.9]	297 [32.0]	35 [27.6]	0 [0.0]
	一般媒介 [構成比]	721 [35.8]	76 [31.8]	209 [29.1]	371 [40.0]	65 [51.2]	0 [0.0]
	売主 [構成比]	439 [21.8]	25 [10.5]	255 [35.5]	155 [16.7]	4 [3.1]	0 [0.0]
	代理 [構成比]	7 [0.3]	2 [0.8]	0 [0.0]	1 [0.1]	4 [3.1]	0 [0.0]
	合計 [地域比]	2,015 [1.5]	239 [0.5]	719 [1.6]	928 [2.7]	127 [1.5]	2 [0.3]
九 州	専属専任 [構成比]	986 [8.7]	320 [11.3]	228 [5.7]	354 [9.5]	79 [11.4]	5 [12.8]
	専任媒介 [構成比]	4,772 [42.2]	1,267 [44.9]	1,614 [40.1]	1,621 [43.6]	256 [36.8]	14 [35.9]
	一般媒介 [構成比]	3,642 [32.2]	724 [25.7]	1,351 [33.6]	1,258 [33.8]	298 [42.9]	11 [28.2]
	売主 [構成比]	1,848 [16.4]	490 [17.4]	821 [20.4]	470 [12.6]	59 [8.5]	8 [20.5]
	代理 [構成比]	51 [0.5]	21 [0.7]	8 [0.2]	18 [0.5]	3 [0.4]	1 [2.6]
	合計 [地域比]	11,299 [8.5]	2,822 [6.5]	4,022 [8.9]	3,721 [10.6]	695 [8.4]	39 [5.2]
全 国	専属専任 [構成比]	12,510 [9.4]	4,424 [10.2]	3,694 [8.2]	3,374 [9.6]	975 [11.9]	43 [5.7]
	専任媒介 [構成比]	46,261 [34.9]	15,138 [34.8]	14,768 [32.7]	13,589 [38.8]	2,565 [31.2]	201 [26.6]
	一般媒介 [構成比]	27,817 [21.0]	7,656 [17.6]	8,339 [18.5]	8,904 [25.4]	2,733 [33.2]	185 [24.4]
	売主 [構成比]	43,969 [33.1]	15,362 [35.3]	17,935 [39.7]	8,710 [24.9]	1,648 [20.0]	314 [41.5]
	代理 [構成比]	2,136 [1.6]	938 [2.2]	444 [1.0]	436 [1.2]	304 [3.7]	14 [1.8]
	合計	132,693	43,518	45,180	35,013	8,225	757

※構成比とは地域内の取引態様別構成比で、地域比とは全国合計の地域別シェアである。

※構成比・地域比は、四捨五入による端数処理のため内数の合計が100%にならないことがある。

指定流通機構実態調査集計、総括表 月間成約件数

		総 数	物 件 種 別				
			マンション	一 戸 建	土 地	住宅外全部	住宅外一部
全	総計件数	74,980	54,086	11,203	5,680	1,179	2,832
	[前月比]	[15.6]	[13.5]	[18.6]	[29.6]	[27.3]	[15.3]
売	総 計	25,411	9,413	9,583	5,595	736	84
	[前月比]	[22.4]	[20.4]	[20.0]	[30.0]	[26.2]	[18.3]
地	北海道	1,110	297	411	337	64	1
	[前月比]	[15.9]	[9.2]	[19.1]	[21.2]	[4.9]	[-50.0]
域	東北	850	167	445	200	38	0
	[前月比]	[23.4]	[22.8]	[36.9]	[2.0]	[22.6]	[-100.0]
別	関東甲信越	1,069	118	635	280	33	3
	[前月比]	[30.8]	[22.9]	[28.5]	[43.6]	[13.8]	[0.0]
物	首都圏	11,063	5,033	3,706	2,006	267	51
	[前月比]	[22.0]	[20.1]	[15.1]	[42.9]	[25.9]	[24.4]
件	中部4県	713	142	318	231	22	0
	[前月比]	[34.0]	[37.9]	[40.7]	[34.3]	[-24.1]	[-100.0]
別	中部圏	2,157	612	745	743	56	1
	[前月比]	[29.2]	[27.8]	[26.7]	[34.6]	[19.1]	[-75.0]
取	近畿圏	5,784	2,225	2,264	1,110	160	25
	[前月比]	[19.8]	[17.5]	[20.6]	[18.8]	[42.9]	[108.3]
引	中国	819	225	335	231	28	0
	[前月比]	[12.5]	[42.4]	[-0.3]	[11.1]	[12.0]	[-100.0]
態	四国	229	58	99	63	8	1
	[前月比]	[15.7]	[-4.9]	[16.5]	[43.2]	[14.3]	[0.0]
様	九州	1,617	536	625	394	60	2
	[前月比]	[27.4]	[25.2]	[28.3]	[23.1]	[100.0]	[-50.0]
別	専属専任	3,935	1,703	1,280	825	118	9
	[前月比]	[30.6]	[28.1]	[27.9]	[38.9]	[43.9]	[50.0]
件	専任媒介	13,346	5,788	4,082	3,068	376	32
	[前月比]	[25.1]	[20.0]	[31.0]	[28.4]	[24.5]	[0.0]
別	一般媒介	2,793	956	946	694	180	17
	[前月比]	[21.2]	[20.3]	[16.4]	[28.0]	[27.7]	[30.8]
取	売主	5,186	920	3,210	972	58	26
	[前月比]	[12.0]	[10.6]	[8.1]	[28.2]	[13.7]	[36.8]
引	代理	151	46	65	36	4	0
	[前月比]	[4.1]	[27.8]	[-20.7]	[89.5]	[-42.9]	[-100.0]
賃	総 計	49,569	44,673	1,620	85	443	2,748
	[前月比]	[12.4]	[12.1]	[10.6]	[7.6]	[29.2]	[15.2]
地	北海道	168	147	7	0	7	7
	[前月比]	[75.0]	[70.9]	[40.0]	[-100.0]	[600.0]	[133.3]
賃	東北	990	880	47	3	12	48
	[前月比]	[61.0]	[68.3]	[9.3]	[200.0]	[140.0]	[11.6]
域	関東甲信越	812	627	80	2	18	85
	[前月比]	[31.6]	[30.9]	[33.3]	[0.0]	[50.0]	[32.8]
物	首都圏	26,203	23,941	626	33	121	1,482
	[前月比]	[8.2]	[7.9]	[5.9]	[13.8]	[39.1]	[12.5]
件	中部4県	583	444	34	2	16	87
	[前月比]	[53.4]	[72.1]	[-27.7]	[-60.0]	[128.6]	[38.1]
別	中部圏	981	861	25	4	14	77
	[前月比]	[25.4]	[24.6]	[56.3]	[33.3]	[-17.6]	[40.0]
取	近畿圏	16,906	15,323	650	26	180	727
	[前月比]	[13.7]	[13.8]	[12.5]	[4.0]	[5.9]	[14.1]
引	中国	374	270	32	5	20	47
	[前月比]	[23.8]	[34.3]	[-3.0]	[66.7]	[185.7]	[-19.0]
態	四国	126	71	21	1	4	29
	[前月比]	[80.0]	[31.5]	[320.0]	[-]	[300.0]	[190.0]
様	九州	2,426	2,109	98	9	51	159
	[前月比]	[12.1]	[11.2]	[12.6]	[-10.0]	[41.7]	[17.8]

* 成約件数は成約報告のあった件数である。

指定流通機構実態調査集計、総括表 当月末総登録件数

		総 数	物 件 種 別					
			マンション	一 戸 建	土 地	住宅外全部	住宅外一部	
全	総計件数 [前月比]	781,116 [-2.8]	354,991 [-4.4]	153,212 [-1.1]	168,512 [-1.9]	34,244 [-0.5]	70,157 [-1.2]	
売	総 計 [前月比]	416,924 [-1.6]	92,031 [-1.8]	135,071 [-1.2]	163,570 [-1.9]	24,443 [-0.3]	1,809 [2.2]	
	地	北海道 [前月比]	16,646 [-1.6]	2,768 [-2.3]	4,911 [-0.7]	7,473 [-2.5]	1,450 [1.6]	44 [0.0]
り	域	東北 [前月比]	22,110 [-1.1]	2,181 [-0.5]	7,327 [-2.0]	11,137 [-1.0]	1,412 [2.1]	53 [-1.9]
	物	別	関東甲信越 [前月比]	36,558 [-1.6]	1,776 [-4.2]	10,820 [-0.7]	21,941 [-1.8]	1,943 [-0.9]
件		取	首都圏 [前月比]	123,861 [-2.0]	44,324 [-2.8]	38,981 [-1.8]	31,843 [-2.1]	7,825 [0.7]
	引		中部4県 [前月比]	23,263 [-3.9]	1,951 [-5.5]	7,492 [-2.2]	12,389 [-4.8]	1,381 [-2.5]
態	様	中部圏 [前月比]	40,829 [-1.2]	6,743 [0.0]	11,544 [-0.9]	20,235 [-1.9]	2,240 [-0.8]	67 [-8.2]
		別	近畿圏 [前月比]	79,583 [-0.6]	21,318 [0.0]	29,887 [-0.5]	24,020 [-1.3]	3,902 [-0.8]
物	件	中国 [前月比]	22,030 [-0.5]	2,077 [-2.9]	7,814 [0.3]	11,010 [-0.5]	1,099 [-2.0]	30 [11.1]
		別	四国 [前月比]	9,185 [0.6]	850 [-0.2]	2,685 [1.1]	5,080 [0.6]	544 [-1.1]
貸	地	九州 [前月比]	42,859 [-2.3]	8,043 [-1.7]	13,610 [-2.5]	18,442 [-2.6]	2,647 [-1.9]	117 [11.4]
		取	専属専任 [前月比]	41,640 [-1.3]	11,555 [-1.1]	13,377 [-1.2]	14,099 [-2.1]	2,480 [1.2]
貸	域	専任媒介 [前月比]	161,798 [-1.4]	39,674 [-2.2]	51,204 [-0.7]	61,981 [-1.7]	8,337 [-0.4]	602 [4.2]
		物	一般媒介 [前月比]	121,970 [-1.9]	21,486 [-1.7]	32,163 [-1.4]	57,428 [-2.5]	10,353 [-0.7]
件	別	売主 [前月比]	86,355 [-1.6]	17,700 [-2.2]	37,042 [-1.8]	28,462 [-1.4]	2,665 [1.7]	486 [3.2]
		代理 [前月比]	5,161 [-1.0]	1,616 [3.5]	1,285 [-2.9]	1,600 [-1.8]	608 [-5.7]	52 [-5.5]
賃	地	総 計 [前月比]	364,192 [-4.1]	262,960 [-5.3]	18,141 [0.1]	4,942 [0.9]	9,801 [-1.1]	68,348 [-1.3]
		賃	北海道 [前月比]	3,075 [-5.7]	2,476 [-8.6]	94 [-3.1]	45 [0.0]	84 [10.5]
賃	域	東北 [前月比]	12,836 [1.5]	10,348 [0.5]	514 [5.8]	193 [7.2]	230 [0.0]	1,551 [6.0]
		物	関東甲信越 [前月比]	15,356 [2.6]	11,396 [2.6]	827 [1.0]	460 [2.7]	585 [3.7]
物	別	首都圏 [前月比]	194,602 [-5.5]	145,727 [-6.7]	7,440 [1.3]	1,391 [-0.6]	3,050 [-3.0]	36,994 [-2.5]
		賃	中部4県 [前月比]	7,651 [-4.4]	4,357 [-7.8]	564 [-0.4]	252 [-1.2]	417 [-8.6]
賃	域	中部圏 [前月比]	9,801 [1.2]	5,817 [2.1]	541 [1.9]	588 [-0.7]	504 [1.0]	2,351 [-0.4]
		物	近畿圏 [前月比]	92,195 [-3.6]	64,842 [-4.7]	5,826 [-1.7]	1,084 [1.2]	3,491 [-0.5]
賃	域	中国 [前月比]	7,529 [-4.3]	4,474 [-5.8]	777 [0.0]	250 [-4.9]	378 [-3.8]	1,650 [-2.0]
		賃	四国 [前月比]	2,630 [-0.8]	1,303 [-0.6]	313 [0.6]	121 [0.0]	189 [5.6]
賃	域	九州 [前月比]	18,517 [-2.7]	12,220 [-3.8]	1,245 [-2.0]	558 [6.5]	873 [1.3]	3,621 [-1.5]