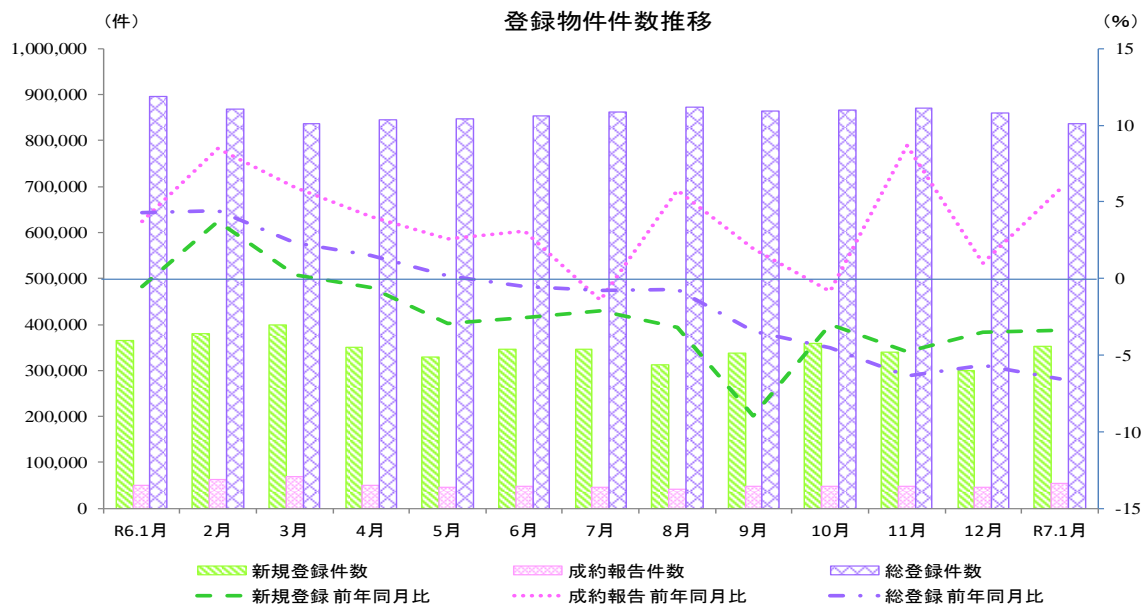


指定流通機構の活用状況について（令和7年1月分）

1. 概況

令和7年1月の指定流通機構の活用状況をみると、新規登録件数は351,867件と前年同月比で10ヶ月連続してマイナスとなり、前月比では3ヶ月ぶりにプラスに転じた。成約報告件数は53,957件と前年同月比で3ヶ月連続してプラスとなり、前月比ではふたたびプラスに転じた。総登録件数は837,892件と前年同月比で8ヶ月連続してマイナスとなり、前月比では2ヶ月連続してマイナスとなった。



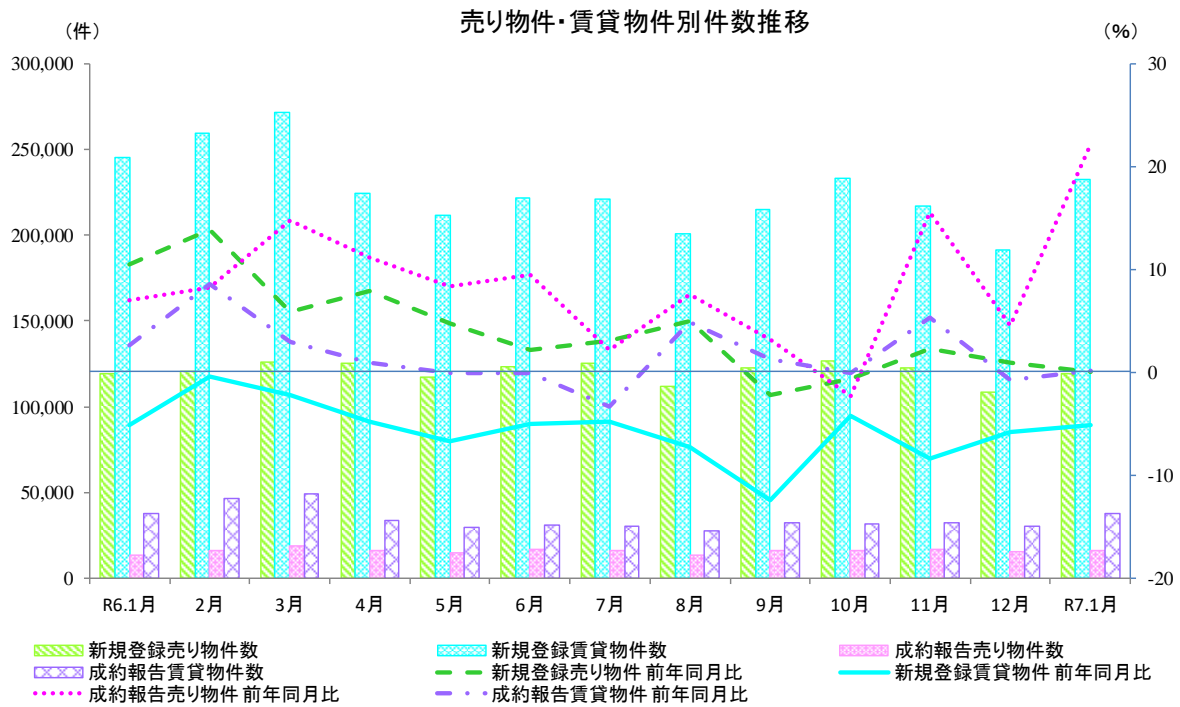
物件件数の推移

	R6.1月	2月	3月	4月	5月	6月	7月	8月	9月	10月	11月	12月	R7.1月
新規登録件数(件)	364,222	380,000	398,141	349,618	328,791	345,321	345,963	312,635	337,793	359,914	339,987	299,292	351,867
前年同月比(%)	▲0.5	3.7	0.2	▲0.6	▲2.9	▲2.5	▲2.1	▲3.2	▲8.9	▲3.0	▲4.7	▲3.5	▲3.4
前月比(%)	17.5	4.3	4.8	▲12.2	▲6.0	5.0	0.2	▲9.6	8.0	6.5	▲5.5	▲12.0	17.6
成約報告件数(件)	50,983	62,390	68,227	50,262	44,925	48,165	46,729	41,087	48,713	48,011	48,900	45,980	53,957
前年同月比(%)	3.7	8.5	6.0	4.1	2.6	3.1	▲1.4	5.7	1.9	▲0.8	8.7	1.0	5.8
前月比(%)	12.0	22.4	9.4	▲26.3	▲10.6	7.2	▲3.0	▲12.1	18.6	▲1.4	1.9	▲6.0	17.3
総登録件数(件)	896,472	869,162	837,673	845,147	848,370	853,736	862,008	872,663	864,906	866,708	870,979	859,860	837,892
前年同月比(%)	4.3	4.4	2.3	1.5	0.2	▲0.5	▲0.8	▲0.7	▲3.4	▲4.5	▲6.4	▲5.6	▲6.5
前月比(%)	▲1.6	▲3.0	▲3.6	0.9	0.4	0.6	1.0	1.2	▲0.9	0.2	0.5	▲1.3	▲2.6

2. 売り・賃貸別物件数

令和7年1月の売り物件数をみると、新規登録件数は119,103件と前年同月比で3ヶ月連続してプラスとなり、前月比では3ヶ月ぶりにプラスに転じた。成約報告件数は16,111件と前年同月比で3ヶ月連続してプラスとなり、前月比ではふたたびプラスに転じた。総登録件数は431,971件と前年同月比で32ヶ月連続してプラスとなり、前月比ではほぼ横ばいとなった。

令和7年1月の賃貸物件数をみると、新規登録件数は232,764件と前年同月比で35ヶ月連続してマイナスとなり、前月比では3ヶ月ぶりにプラスに転じた。成約報告件数は37,846件と前年同月比でふたたびプラスに転じ、前月比でもふたたびプラスに転じた。総登録件数は405,921件と前年同月比で29ヶ月連続してマイナスとなり、前月比では2ヶ月連続してマイナスとなった。



R7年1月 売り物件・賃貸物件別件数

新規登録件数	351,867 件	前年同月比 ▲ 3.4 %	👉 前月比 17.6 %	👆
売り物件	119,103 件	前年同月比 0.1 %	👉 前月比 10.1 %	👆
賃貸物件	232,764 件	前年同月比 ▲ 5.1 %	👉 前月比 21.8 %	👆
成約報告件数	53,957 件	前年同月比 5.8 %	👉 前月比 17.3 %	👆
売り物件	16,111 件	前年同月比 22.2 %	👆 前月比 2.8 %	👉
賃貸物件	37,846 件	前年同月比 0.1 %	👉 前月比 24.9 %	👆
総登録件数	837,892 件	前年同月比 ▲ 6.5 %	👉 前月比 ▲ 2.6 %	👉
売り物件	431,971 件	前年同月比 5.2 %	👉 前月比 ▲ 0.0 %	👉
賃貸物件	405,921 件	前年同月比 ▲ 16.4 %	👇 前月比 ▲ 5.1 %	👉

凡例: 👆 10% ~ 👉 3% ~ 10% 👉 -3% ~ 3% 👉 -10% ~ -3% 👇 ~ -10%

※前月の「総登録件数のうち売り物件」は431,973件であり、今月の件数は前月比では2件の減少。

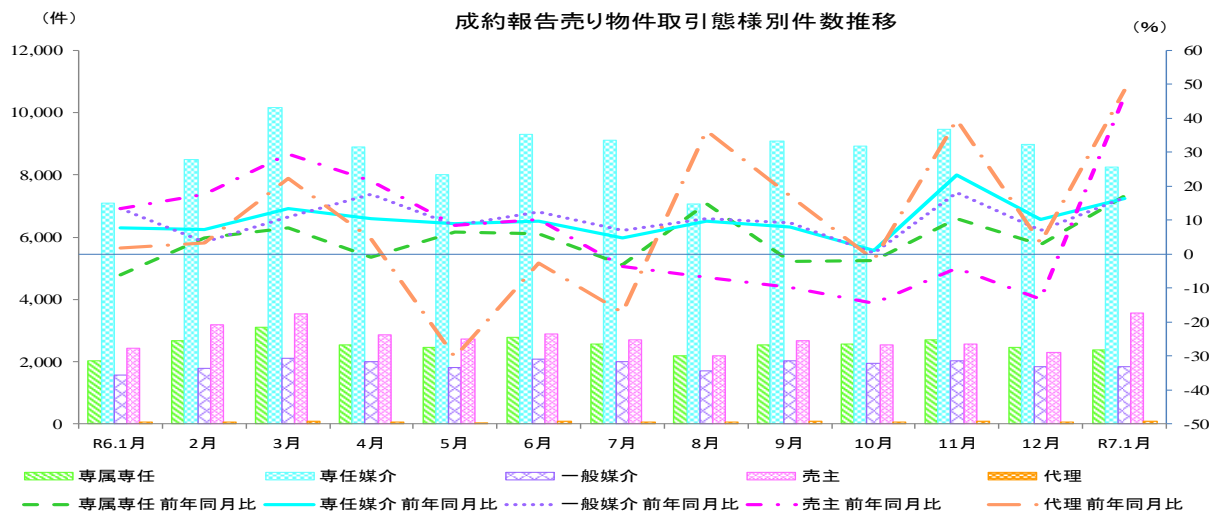
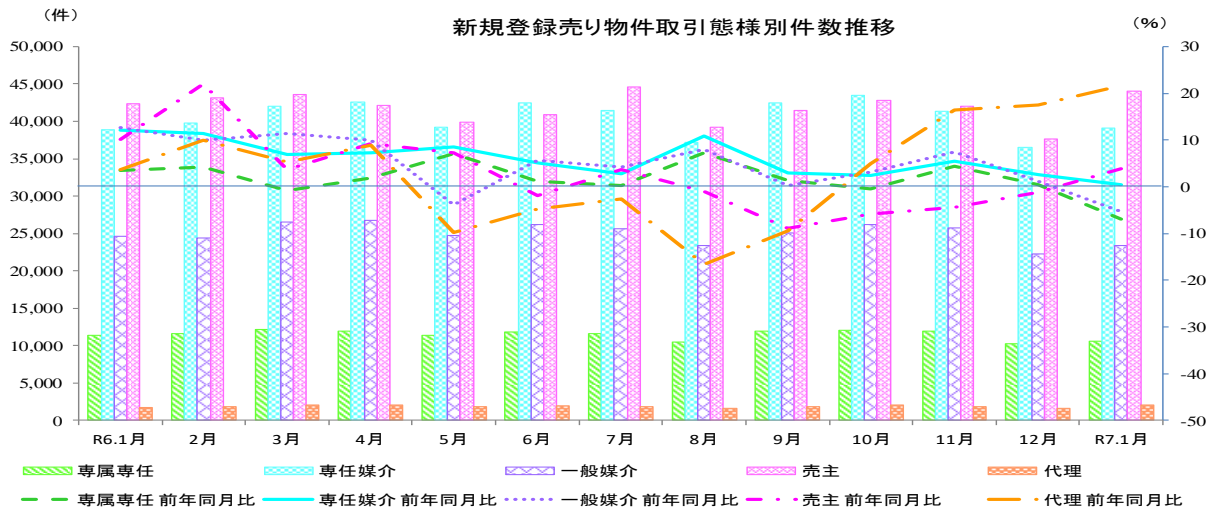
3. 売り物件の取引態様別物件数

令和7年1月の新規登録売り物件の取引態様別をみると、売主は37.0%を占め、次いで専任媒介は32.8%を占めている。成約報告売り物件の取引態様別をみると、専任媒介は51.2%を占め、次いで専属専任は14.8%を占めている。

R7年1月 売り物件の取引態様別件数

	取引態様	件数	構成比	前年同月比	前月比
新規登録件数	媒介契約	72,984 件	61.3 %	▲ 2.6 % ➡	5.9 % ➡
	専属専任	10,586 件	8.9 %	▲ 6.9 % 📉	3.8 % ➡
	専任媒介	39,064 件	32.8 %	0.4 % ➡	7.0 % ➡
	一般媒介	23,334 件	19.6 %	▲ 5.3 % 📉	4.9 % ➡
	売主	44,014 件	37.0 %	3.9 % ➡	17.0 % 📈
	代理	2,105 件	1.8 %	21.7 % 📈	27.0 % 📈
成約報告件数	媒介契約	12,463 件	77.4 %	16.5 % 📈	▲ 6.4 % 📉
	専属専任	2,385 件	14.8 %	17.1 % 📈	▲ 3.5 % 📉
	専任媒介	8,248 件	51.2 %	16.3 % 📈	▲ 8.3 % 📉
	一般媒介	1,830 件	11.4 %	16.6 % 📈	▲ 1.2 % ➡
	売主	3,565 件	22.1 %	46.5 % 📈	55.1 % 📈
	代理	83 件	0.5 %	48.2 % 📈	29.7 % 📈

凡例: 📈 10% ~ 📉 3% ~ 10% ➡ -3% ~ 3% 📉 -10% ~ -3% 📉 ~ -10%



指定流通機構実態調査集計、総括表 新規登録件数

		物 件 種 別					
		総 数	マンション	一 戸 建	土 地	住宅外全部	住宅外一部
全	総計件数	351,867	239,826	49,923	31,692	10,053	20,373
	[前月比]	[17.6]	[20.1]	[13.8]	[10.2]	[11.6]	[13.8]
売	総 計	119,103	38,810	41,356	30,889	7,401	647
	[前月比]	[10.1]	[8.8]	[10.8]	[10.3]	[11.0]	[21.8]
地	北海道	3,764	1,354	966	1,050	380	14
	[前月比]	[2.6]	[9.5]	[-4.5]	[-1.5]	[9.2]	[55.6]
域	東北	4,359	793	1,604	1,616	327	19
	[前月比]	[-0.6]	[10.1]	[-9.1]	[3.3]	[2.5]	[11.8]
別	関東甲信越	6,413	504	2,399	2,898	593	19
	[前月比]	[1.5]	[-5.8]	[-2.5]	[5.7]	[5.1]	[11.8]
物	首都圏	54,490	23,294	17,696	9,862	3,215	423
	[前月比]	[12.6]	[10.2]	[17.9]	[9.6]	[8.7]	[39.6]
件	中部4県	4,165	574	1,637	1,630	315	9
	[前月比]	[12.6]	[6.7]	[15.9]	[8.3]	[36.4]	[-35.7]
別	中部圏	8,309	1,850	2,928	2,994	531	6
	[前月比]	[2.6]	[-1.0]	[6.4]	[0.4]	[8.1]	[-45.5]
取	近畿圏	21,834	7,047	8,617	4,979	1,080	111
	[前月比]	[11.3]	[9.4]	[9.3]	[16.3]	[23.7]	[-17.8]
引	中国	3,777	529	1,538	1,494	210	6
	[前月比]	[9.4]	[-3.1]	[13.5]	[12.1]	[-2.3]	[200.0]
態	四国	2,206	248	559	1,254	139	6
	[前月比]	[45.2]	[35.5]	[-2.4]	[92.9]	[28.7]	[20.0]
様	九州	9,786	2,617	3,412	3,112	611	34
	[前月比]	[8.2]	[5.3]	[9.5]	[8.4]	[9.5]	[88.9]
別	専属専任	10,586	3,729	3,087	2,893	840	37
	[前月比]	[3.8]	[0.6]	[3.2]	[5.8]	[14.9]	[5.7]
件	専任媒介	39,064	12,656	12,379	11,684	2,184	161
	[前月比]	[7.0]	[4.7]	[5.8]	[10.9]	[6.6]	[17.5]
別	一般媒介	23,334	6,959	6,739	7,000	2,507	129
	[前月比]	[4.9]	[9.1]	[1.4]	[2.8]	[9.2]	[11.2]
取	売主	44,014	14,705	18,521	8,904	1,592	292
	[前月比]	[17.0]	[13.6]	[19.0]	[18.6]	[16.4]	[33.9]
引	代理	2,105	761	630	408	278	28
	[前月比]	[27.0]	[33.7]	[43.5]	[1.2]	[25.2]	[12.0]
賃	総 計	232,764	201,016	8,567	803	2,652	19,726
	[前月比]	[21.8]	[22.5]	[31.0]	[3.6]	[13.2]	[13.5]
地	北海道	1,420	1,277	30	8	13	92
	[前月比]	[20.4]	[19.6]	[66.7]	[-20.0]	[18.2]	[27.8]
賃	東北	4,932	4,387	231	12	39	263
	[前月比]	[32.8]	[34.6]	[49.0]	[-58.6]	[-29.1]	[22.3]
域	関東甲信越	6,737	5,743	396	52	139	407
	[前月比]	[28.1]	[26.8]	[64.3]	[-11.9]	[69.5]	[17.0]
物	首都圏	160,257	142,044	4,241	311	1,029	12,632
	[前月比]	[22.2]	[22.9]	[28.2]	[9.1]	[-3.2]	[15.8]
件	中部4県	2,574	1,740	264	27	97	446
	[前月比]	[24.8]	[27.9]	[30.7]	[0.0]	[11.5]	[15.5]
別	中部圏	3,041	2,240	214	77	106	404
	[前月比]	[-7.5]	[-2.8]	[32.1]	[6.9]	[20.5]	[-39.1]
取	近畿圏	41,804	34,318	2,206	189	895	4,196
	[前月比]	[18.1]	[18.0]	[29.8]	[23.5]	[26.2]	[12.4]
引	中国	2,026	1,339	254	35	69	329
	[前月比]	[19.5]	[25.7]	[2.4]	[20.7]	[23.2]	[10.8]
態	四国	870	482	143	24	48	173
	[前月比]	[41.0]	[16.1]	[101.4]	[-20.0]	[108.7]	[121.8]
様	九州	9,103	7,446	588	68	217	784
	[前月比]	[34.8]	[37.9]	[36.1]	[-16.0]	[29.2]	[16.7]

* 前月比欄の数値は、対前月増減率である。

* 「関東甲信越」は、茨城県・栃木県・群馬県・新潟県・山梨県・長野県、「首都圏」は、東京都・千葉県・埼玉県・神奈川県、「中部圏」は、愛知県・岐阜県・三重県、「中部4県」は、富山県・石川県・福井県・静岡県、「近畿圏」は、大阪府・京都府・兵庫県・滋賀県・奈良県・和歌山県をいう。

指定流通機構実態調査 売り物件・新規登録件数 時系列表

	6年1月	6年2月	6年3月	6年4月	6年5月	6年6月	6年7月	6年8月	6年9月	6年10月	6年11月	6年12月	7年1月	一年間計		
	件数 (前月比) [前年比]	件数 (前月比) [前年比]	件数 (前月比) [前年比]	件数 (前月比) [前年比]	件数 (前月比) [前年比]	件数 (前月比) [前年比]	件数 (前月比) [前年比]	件数 (前月比) [前年比]	件数 (前月比) [前年比]	件数 (前月比) [前年比]	件数 (前月比) [前年比]	件数 (前月比) [前年比]	件数 (前月比) [前年比]	件数 (前月比) [前年比]	件数 (構成比)	
総数	118,996 (11.0) [10.5]	120,794 (1.5) [13.8]	126,273 (4.5) [5.8]	125,446 (-0.7) [7.9]	117,118 (-6.6) [4.7]	123,295 (5.3) [2.2]	125,209 (1.6) [3.0]	111,820 (-10.7) [5.0]	122,933 (9.9) [2.2]	126,493 (2.9) [-0.6]	122,871 (-2.9) [2.3]	108,210 (-11.9) [0.9]	119,103 (10.1) [0.1]	1,449,565		
地域	北海道	3,962 (0.5) [9.0]	3,870 (-2.3) [9.0]	4,111 (6.2) [0.2]	4,606 (12.0) [7.5]	4,203 (-8.7) [-1.6]	4,537 (7.9) [-4.4]	4,779 (5.3) [0.8]	4,227 (-11.6) [6.1]	4,631 (9.6) [-5.6]	4,497 (-2.9) [-8.1]	4,055 (-9.8) [-14.3]	3,670 (-9.5) [-6.9]	3,764 (2.6) [-5.0]	50,950 (3.5)	
	東北	4,028 (0.2) [19.5]	4,596 (14.1) [31.3]	5,032 (9.5) [26.3]	4,512 (-10.3) [3.6]	4,484 (-0.6) [-1.3]	4,951 (10.4) [10.0]	5,159 (4.2) [12.9]	4,623 (-10.4) [10.9]	4,894 (5.9) [4.7]	4,974 (1.6) [14.1]	4,891 (-1.7) [1.4]	4,384 (-10.4) [9.0]	4,359 (-0.6) [8.2]	56,859 (3.9)	
	関東甲信越	6,344 (3.4) [11.1]	5,962 (-6.0) [7.5]	6,827 (14.5) [9.5]	6,481 (-5.1) [1.0]	6,518 (0.6) [-4.5]	6,778 (4.0) [-1.2]	7,143 (5.4) [4.2]	6,207 (-13.1) [0.1]	6,680 (7.6) [-9.6]	6,915 (3.5) [-4.8]	6,867 (-0.7) [7.2]	6,320 (-8.0) [3.0]	6,413 (1.5) [1.1]	79,111 (5.5)	
	圏	首都圏	55,949 (14.3) [8.4]	58,168 (4.0) [13.7]	58,982 (1.4) [3.0]	58,612 (-0.6) [6.2]	53,772 (-8.3) [7.0]	56,541 (5.1) [-1.0]	57,230 (1.2) [-1.6]	50,117 (-12.4) [-0.5]	56,529 (12.8) [-3.8]	58,283 (3.1) [-3.3]	56,064 (-3.8) [-2.4]	48,402 (-13.7) [-1.2]	54,490 (12.6) [-2.6]	667,190 (46.0)
	別	中部4県	4,344 (4.7) [4.1]	4,309 (-0.8) [9.9]	4,691 (8.9) [1.4]	5,020 (7.0) [13.2]	4,414 (-12.1) [-7.4]	4,666 (5.7) [5.1]	5,107 (9.5) [10.2]	4,132 (-19.1) [-4.0]	4,170 (0.9) [-7.5]	5,218 (25.1) [8.2]	4,650 (-10.9) [3.6]	3,700 (-20.4) [-10.8]	4,165 (12.6) [-4.1]	54,242 (3.7)
	内	中部圏	8,781 (8.1) [6.7]	8,394 (-4.4) [11.3]	9,139 (8.9) [6.6]	9,303 (1.8) [11.5]	8,147 (-12.4) [-0.9]	8,390 (3.0) [1.7]	8,837 (5.3) [5.0]	7,872 (-10.9) [7.8]	8,422 (7.0) [-7.8]	8,739 (3.8) [-3.8]	8,914 (2.0) [6.0]	8,102 (-9.1) [-0.2]	8,309 (2.6) [-5.4]	102,568 (7.1)
		近畿圏	20,923 (15.6) [15.5]	21,316 (1.9) [15.8]	22,303 (4.6) [11.4]	21,772 (-2.4) [12.3]	20,294 (-6.8) [11.5]	20,818 (2.6) [5.1]	21,732 (4.4) [7.3]	19,578 (-9.9) [13.1]	22,249 (13.6) [4.3]	21,828 (-1.9) [1.6]	21,918 (0.4) [9.9]	19,615 (-10.5) [8.4]	21,834 (11.3) [4.4]	255,257 (17.6)
		中国	3,659 (12.8) [-2.3]	3,513 (-4.0) [-2.6]	3,616 (2.9) [-4.2]	3,935 (8.8) [11.5]	3,667 (-6.8) [5.7]	3,650 (-0.5) [2.0]	3,955 (8.4) [11.7]	3,368 (-14.8) [8.1]	4,033 (19.7) [11.4]	4,090 (1.4) [12.1]	3,880 (-5.1) [7.0]	3,451 (-11.1) [6.4]	3,777 (9.4) [3.2]	44,935 (3.1)
		四国	1,267 (-32.1) [11.5]	1,330 (5.0) [7.4]	1,504 (13.1) [-25.2]	1,428 (-5.1) [5.3]	2,244 (57.1) [49.1]	3,424 (52.6) [58.5]	1,496 (-56.3) [7.9]	2,133 (42.6) [66.5]	1,459 (-31.6) [-27.2]	2,124 (45.6) [46.0]	1,553 (-26.9) [7.4]	1,519 (-2.2) [-18.6]	2,206 (45.2) [74.1]	22,420 (1.5)
		九州	9,739 (12.5) [21.5]	9,336 (-4.1) [22.3]	10,068 (7.8) [15.4]	9,777 (-2.9) [9.1]	9,375 (-4.1) [-4.3]	9,540 (1.8) [3.8]	9,771 (2.4) [8.9]	9,563 (-2.1) [13.6]	9,866 (3.2) [5.2]	9,825 (-0.4) [3.3]	10,079 (2.6) [8.5]	9,047 (-10.2) [4.5]	9,786 (8.2) [0.5]	116,033 (8.0)
取引態様	専属専任媒介	11,375 (11.9) [3.4]	11,611 (2.1) [4.1]	12,202 (5.1) [-0.8]	11,917 (-2.3) [1.9]	11,368 (-4.6) [7.0]	11,866 (4.4) [1.1]	11,629 (-2.0) [0.3]	10,452 (-10.1) [7.2]	11,965 (14.5) [1.3]	12,087 (1.0) [-0.4]	11,892 (-1.6) [4.3]	10,199 (-14.2) [0.4]	10,586 (3.8) [-6.9]	137,774 (9.5)	
	引専任媒介	38,892 (9.3) [12.1]	39,801 (2.3) [11.4]	42,016 (5.6) [6.9]	42,636 (1.5) [7.2]	39,270 (-7.9) [8.4]	42,430 (8.0) [5.1]	41,410 (-2.4) [2.7]	37,244 (-10.1) [10.8]	42,510 (14.1) [2.9]	43,454 (2.2) [2.4]	41,394 (-4.7) [5.5]	36,503 (-11.8) [2.6]	39,064 (7.0) [0.4]	487,732 (33.6)	
	一般媒介	24,632 (12.0) [12.6]	24,344 (-1.2) [9.9]	26,479 (8.8) [11.4]	26,769 (1.1) [10.0]	24,753 (-7.5) [-3.9]	26,161 (5.7) [5.6]	25,680 (-1.8) [4.1]	23,359 (-9.0) [8.0]	25,107 (7.5) [0.2]	26,160 (4.2) [3.1]	25,730 (-1.6) [7.5]	22,244 (-13.5) [1.1]	23,334 (4.9) [-5.3]	300,120 (20.7)	
	別	売主	42,367 (11.3) [10.1]	43,172 (1.9) [22.0]	43,540 (0.9) [3.6]	42,097 (-3.3) [9.2]	39,898 (-5.2) [7.2]	40,930 (2.6) [-2.0]	44,599 (9.0) [3.7]	39,198 (-12.1) [-1.1]	41,475 (5.8) [-8.8]	42,788 (3.2) [-5.8]	41,968 (-1.9) [-4.4]	37,606 (-10.4) [-1.2]	44,014 (17.0) [3.9]	501,285 (34.6)
	代理	1,730 (22.5) [3.7]	1,866 (7.9) [9.9]	2,036 (9.1) [5.2]	2,027 (-0.4) [8.8]	1,829 (-9.8) [-9.9]	1,908 (4.3) [-4.8]	1,891 (-0.9) [-2.6]	1,567 (-17.1) [-16.6]	1,876 (19.7) [-9.4]	2,004 (6.8) [5.0]	1,887 (-5.8) [16.5]	1,858 (-12.1) [17.4]	2,105 (27.0) [21.7]	22,654 (1.6)	
物件種類	マンション	41,624 (13.8) [4.9]	42,382 (1.8) [5.8]	44,079 (4.0) [0.3]	43,425 (-1.5) [2.0]	39,449 (-9.2) [0.7]	41,372 (4.9) [-3.2]	40,708 (-1.6) [-6.2]	36,377 (-10.6) [-2.3]	41,362 (13.7) [-4.9]	41,855 (1.2) [-4.0]	40,115 (-4.2) [-3.0]	35,685 (-11.0) [-2.4]	38,810 (8.8) [-6.8]	485,619 (33.5)	
	件	一戸建	39,757 (7.1) [12.9]	41,179 (3.6) [21.3]	42,443 (3.1) [7.9]	41,345 (-2.6) [11.5]	39,074 (-5.5) [8.3]	41,321 (5.8) [3.4]	43,840 (6.1) [8.1]	38,426 (-12.3) [6.8]	41,988 (9.3) [-2.7]	42,485 (1.2) [-2.6]	37,337 (-5.5) [2.0]	41,356 (10.8) [4.0]	493,046 (34.0)	
	土地	30,878 (12.7) [15.8]	29,957 (-3.0) [15.4]	32,088 (7.1) [10.2]	32,885 (2.5) [11.1]	30,920 (-6.0) [2.0]	32,913 (6.4) [6.7]	32,744 (-0.5) [7.0]	29,983 (-8.4) [10.6]	31,449 (4.9) [-1.8]	33,652 (7.0) [3.2]	32,478 (-3.5) [7.2]	27,992 (-13.8) [2.1]	30,889 (10.3) [0.0]	377,950 (26.1)	
	別	住宅外(全部)	6,121 (9.4) [7.7]	6,621 (8.2) [18.3]	7,047 (6.4) [13.4]	7,184 (1.9) [13.0]	7,066 (-1.6) [24.5]	7,121 (0.8) [11.3]	7,251 (1.8) [12.9]	6,423 (-11.4) [14.1]	7,446 (15.9) [16.1]	7,885 (5.9) [15.9]	7,349 (-6.8) [14.0]	6,665 (-9.3) [19.2]	7,401 (11.0) [20.9]	85,459 (5.9)
	住宅外(一部)	616 (16.9) [22.5]	655 (6.3) [13.7]	616 (-6.0) [-11.9]	607 (-1.5) [-5.5]	609 (0.3) [0.0]	588 (-6.7) [-19.9]	666 (17.3) [13.3]	611 (-8.3) [23.7]	688 (12.6) [6.7]	616 (-10.5) [-9.5]	677 (9.9) [16.3]	531 (-21.6) [0.8]	647 (21.8) [5.0]	7,491 (0.5)	

※ 構成比は、四捨五入による端数処理のため内数の合計が100%にならないことがある

指定流通機構実態調査集計、総括表 地域別取引態様別売物件月間新規登録件数

地域	取引態様	総数	物件種別				
			マンション	一戸建	土地	住宅外全部	住宅外一部
北海道	専属専任 [構成比]	288 [7.7]	100 [7.4]	63 [6.5]	97 [9.2]	28 [7.4]	0 [0.0]
	専任媒介 [構成比]	1,761 [46.8]	442 [32.6]	559 [57.9]	573 [54.6]	177 [46.6]	10 [71.4]
	一般媒介 [構成比]	633 [16.8]	149 [11.0]	177 [18.3]	202 [19.2]	104 [27.4]	1 [7.1]
	売主 [構成比]	1,068 [28.4]	661 [48.8]	164 [17.0]	172 [16.4]	68 [17.9]	3 [21.4]
	代理 [構成比]	14 [0.4]	2 [0.1]	3 [0.3]	6 [0.6]	3 [0.8]	0 [0.0]
	合計 [地域比]	3,764 [3.2]	1,354 [3.5]	966 [2.3]	1,050 [3.4]	380 [5.1]	14 [2.2]
東北	専属専任 [構成比]	202 [4.6]	52 [6.6]	60 [3.7]	55 [3.4]	32 [9.8]	3 [15.8]
	専任媒介 [構成比]	1,481 [34.0]	246 [31.0]	528 [32.9]	605 [37.4]	100 [30.6]	2 [10.5]
	一般媒介 [構成比]	1,168 [26.8]	118 [14.9]	359 [22.4]	564 [34.9]	119 [36.4]	8 [42.1]
	売主 [構成比]	1,468 [33.7]	367 [46.3]	652 [40.6]	373 [23.1]	70 [21.4]	6 [31.6]
	代理 [構成比]	40 [0.9]	10 [1.3]	5 [0.3]	19 [1.2]	6 [1.8]	0 [0.0]
	合計 [地域比]	4,359 [3.7]	793 [2.0]	1,604 [3.9]	1,616 [5.2]	327 [4.4]	19 [2.9]
関東甲信越	専属専任 [構成比]	281 [4.4]	25 [5.0]	64 [2.7]	129 [4.5]	62 [10.5]	1 [5.3]
	専任媒介 [構成比]	2,132 [33.2]	218 [43.3]	812 [33.8]	940 [32.4]	156 [26.3]	6 [31.6]
	一般媒介 [構成比]	1,890 [29.5]	144 [28.6]	446 [18.6]	985 [34.0]	307 [51.8]	8 [42.1]
	売主 [構成比]	2,030 [31.7]	111 [22.0]	1,049 [43.7]	806 [27.8]	60 [10.1]	4 [21.1]
	代理 [構成比]	80 [1.2]	6 [1.2]	28 [1.2]	38 [1.3]	8 [1.3]	0 [0.0]
	合計 [地域比]	6,413 [5.4]	504 [1.3]	2,399 [5.8]	2,898 [9.4]	593 [8.0]	19 [2.9]
首都圏	専属専任 [構成比]	4,037 [7.4]	2,063 [8.9]	855 [4.8]	796 [8.1]	302 [9.4]	21 [5.0]
	専任媒介 [構成比]	15,532 [28.5]	6,693 [28.7]	4,620 [26.1]	3,306 [33.5]	830 [25.8]	83 [19.6]
	一般媒介 [構成比]	6,722 [12.3]	3,297 [14.2]	1,386 [7.8]	1,109 [11.2]	874 [27.2]	56 [13.2]
	売主 [構成比]	26,797 [49.2]	10,637 [45.7]	10,412 [58.8]	4,473 [45.4]	1,035 [32.2]	240 [56.7]
	代理 [構成比]	1,402 [2.6]	604 [2.6]	423 [2.4]	178 [1.8]	174 [5.4]	23 [5.4]
	合計 [地域比]	54,490 [45.8]	23,294 [60.0]	17,696 [42.8]	9,862 [31.9]	3,215 [43.4]	423 [65.4]
中部四県	専属専任 [構成比]	362 [8.7]	31 [5.4]	119 [7.3]	159 [9.8]	53 [16.8]	0 [0.0]
	専任媒介 [構成比]	1,331 [32.0]	212 [36.9]	465 [28.4]	572 [35.1]	81 [25.7]	1 [11.1]
	一般媒介 [構成比]	1,480 [35.5]	226 [39.4]	507 [31.0]	596 [36.6]	146 [46.3]	5 [55.6]
	売主 [構成比]	946 [22.7]	96 [16.7]	527 [32.2]	291 [17.9]	29 [9.2]	3 [33.3]
	代理 [構成比]	46 [1.1]	9 [1.6]	19 [1.2]	12 [0.7]	6 [1.9]	0 [0.0]
	合計 [地域比]	4,165 [3.5]	574 [1.5]	1,637 [4.0]	1,630 [5.3]	315 [4.3]	9 [1.4]
中部圏	専属専任 [構成比]	653 [7.9]	212 [11.5]	169 [5.8]	200 [6.7]	72 [13.6]	0 [0.0]
	専任媒介 [構成比]	2,984 [35.9]	754 [40.8]	822 [28.1]	1,217 [40.6]	187 [35.2]	4 [66.7]
	一般媒介 [構成比]	2,016 [24.3]	394 [21.3]	532 [18.2]	886 [29.6]	203 [38.2]	1 [16.7]
	売主 [構成比]	2,603 [31.3]	468 [25.3]	1,395 [47.6]	672 [22.4]	67 [12.6]	1 [16.7]
	代理 [構成比]	53 [0.6]	22 [1.2]	10 [0.3]	19 [0.6]	2 [0.4]	0 [0.0]
	合計 [地域比]	8,309 [7.0]	1,850 [4.8]	2,928 [7.1]	2,994 [9.7]	531 [7.2]	6 [0.9]
近畿圏	専属専任 [構成比]	3,458 [15.8]	983 [13.9]	1,393 [16.2]	891 [17.9]	179 [16.6]	12 [10.8]
	専任媒介 [構成比]	7,071 [32.4]	2,624 [37.2]	2,375 [27.6]	1,720 [34.5]	313 [29.0]	39 [35.1]
	一般媒介 [構成比]	4,753 [21.8]	1,668 [23.7]	1,705 [19.8]	998 [20.0]	352 [32.6]	30 [27.0]
	売主 [構成比]	6,203 [28.4]	1,696 [24.1]	3,021 [35.1]	1,285 [25.8]	174 [16.1]	27 [24.3]
	代理 [構成比]	349 [1.6]	76 [1.1]	123 [1.4]	85 [1.7]	62 [5.7]	3 [2.7]
	合計 [地域比]	21,834 [18.3]	7,047 [18.2]	8,617 [20.8]	4,979 [16.1]	1,080 [14.6]	111 [17.2]
中国	専属専任 [構成比]	228 [6.0]	17 [3.2]	89 [5.8]	97 [6.5]	25 [11.9]	0 [0.0]
	専任媒介 [構成比]	1,825 [48.3]	291 [55.0]	728 [47.3]	731 [48.9]	71 [33.8]	4 [66.7]
	一般媒介 [構成比]	1,027 [27.2]	104 [19.7]	435 [28.3]	405 [27.1]	81 [38.6]	2 [33.3]
	売主 [構成比]	668 [17.7]	116 [21.9]	276 [17.9]	249 [16.7]	27 [12.9]	0 [0.0]
	代理 [構成比]	29 [0.8]	1 [0.2]	10 [0.7]	12 [0.8]	6 [2.9]	0 [0.0]
	合計 [地域比]	3,777 [3.2]	529 [1.4]	1,538 [3.7]	1,494 [4.8]	210 [2.8]	6 [0.9]
四国	専属専任 [構成比]	256 [11.6]	22 [8.9]	46 [8.2]	176 [14.0]	12 [8.6]	0 [0.0]
	専任媒介 [構成比]	943 [42.7]	97 [39.1]	175 [31.3]	622 [49.6]	47 [33.8]	2 [33.3]
	一般媒介 [構成比]	642 [29.1]	82 [33.1]	162 [29.0]	339 [27.0]	57 [41.0]	2 [33.3]
	売主 [構成比]	341 [15.5]	46 [18.5]	171 [30.6]	104 [8.3]	18 [12.9]	2 [33.3]
	代理 [構成比]	24 [1.1]	1 [0.4]	5 [0.9]	13 [1.0]	5 [3.6]	0 [0.0]
	合計 [地域比]	2,206 [1.9]	248 [0.6]	559 [1.4]	1,254 [4.1]	139 [1.9]	6 [0.9]
九州	専属専任 [構成比]	821 [8.4]	224 [8.6]	229 [6.7]	293 [9.4]	75 [12.3]	0 [0.0]
	専任媒介 [構成比]	4,004 [40.9]	1,079 [41.2]	1,295 [38.0]	1,398 [44.9]	222 [36.3]	10 [29.4]
	一般媒介 [構成比]	3,003 [30.7]	777 [29.7]	1,030 [30.2]	916 [29.4]	264 [43.2]	16 [47.1]
	売主 [構成比]	1,890 [19.3]	507 [19.4]	854 [25.0]	479 [15.4]	44 [7.2]	6 [17.6]
	代理 [構成比]	68 [0.7]	30 [1.1]	4 [0.1]	26 [0.8]	6 [1.0]	2 [5.9]
	合計 [地域比]	9,786 [8.2]	2,617 [6.7]	3,412 [8.3]	3,112 [10.1]	611 [8.3]	34 [5.3]
全国	専属専任 [構成比]	10,586 [8.9]	3,729 [9.6]	3,087 [7.5]	2,893 [9.4]	840 [11.3]	37 [5.7]
	専任媒介 [構成比]	39,064 [32.8]	12,656 [32.6]	12,379 [29.9]	11,684 [37.8]	2,184 [29.5]	161 [24.9]
	一般媒介 [構成比]	23,334 [19.6]	6,959 [17.9]	6,739 [16.3]	7,000 [22.7]	2,507 [33.9]	129 [19.9]
	売主 [構成比]	44,014 [37.0]	14,705 [37.9]	18,521 [44.8]	8,904 [28.8]	1,592 [21.5]	292 [45.1]
	代理 [構成比]	2,105 [1.8]	761 [2.0]	630 [1.5]	408 [1.3]	278 [3.8]	28 [4.3]
	合計	119,103	38,810	41,356	30,889	7,401	647

※構成比とは地域内の取引態様別構成比で、地域比とは全国合計の地域別シェアである。

※構成比・地域比は、四捨五入による端数処理のため内数の合計が100%にならないことがある。

指定流通機構実態調査集計、総括表 月間成約件数

		総 数	物 件 種 別				
			マンション	一 戸 建	土 地	住宅外全部	住宅外一部
全	総計件数	53,957	40,051	7,489	3,439	806	2,172
	[前月比]	[17.3]	[22.4]	[14.3]	[-6.4]	[-2.1]	[-1.3]
売	総 計	16,111	6,051	6,175	3,362	480	43
	[前月比]	[2.8]	[-0.6]	[13.6]	[-6.8]	[-3.8]	[-14.0]
地	北海道	737	164	299	232	42	0
	[前月比]	[-11.7]	[-13.2]	[-7.7]	[-15.6]	[-8.7]	[-100.0]
域	東北	551	111	280	143	17	0
	[前月比]	[-7.1]	[-1.8]	[5.3]	[-22.7]	[-39.3]	[-100.0]
り	関東甲信越	690	86	374	209	19	2
	[前月比]	[0.4]	[-18.1]	[8.7]	[-2.3]	[-13.6]	[0.0]
物	首都圏	6,955	3,263	2,399	1,090	182	21
	[前月比]	[17.3]	[3.1]	[53.1]	[9.9]	[2.2]	[-16.0]
別	中部4県	456	105	193	138	18	2
	[前月比]	[-0.7]	[40.0]	[-7.2]	[-16.9]	[100.0]	[100.0]
件	中部圏	1,312	359	454	457	40	2
	[前月比]	[-2.7]	[-5.3]	[6.6]	[-9.3]	[8.1]	[0.0]
態	近畿圏	3,625	1,458	1,441	628	85	13
	[前月比]	[-1.3]	[0.2]	[1.2]	[-7.5]	[-15.0]	[-7.1]
様	中国	577	131	252	174	19	1
	[前月比]	[-16.5]	[-20.1]	[-17.4]	[-13.4]	[-9.5]	[-]
別	四国	160	37	88	31	4	0
	[前月比]	[-13.5]	[-14.0]	[15.8]	[-43.6]	[-60.0]	[-100.0]
取	九州	1,048	337	395	260	54	2
	[前月比]	[-18.2]	[-15.8]	[-20.0]	[-22.6]	[12.5]	[-33.3]
引	専属専任	2,385	1,117	748	451	66	3
	[前月比]	[-3.5]	[-0.2]	[-2.7]	[-9.1]	[-21.4]	[-25.0]
態	専任媒介	8,248	3,643	2,462	1,867	256	20
	[前月比]	[-8.3]	[-6.2]	[-9.2]	[-10.2]	[-10.2]	[-37.5]
様	一般媒介	1,830	633	632	448	111	6
	[前月比]	[-1.2]	[9.7]	[-3.4]	[-12.5]	[9.9]	[-25.0]
別	売主	3,565	639	2,287	580	45	14
	[前月比]	[55.1]	[32.8]	[78.5]	[15.1]	[60.7]	[180.0]
代	代理	83	19	46	16	2	0
	[前月比]	[29.7]	[-32.1]	[142.1]	[6.7]	[100.0]	[-100.0]
賃	総 計	37,846	34,000	1,314	77	326	2,129
	[前月比]	[24.9]	[27.6]	[17.5]	[14.9]	[0.6]	[-1.0]
地	北海道	105	88	6	2	3	6
	[前月比]	[47.9]	[66.0]	[20.0]	[100.0]	[-66.7]	[100.0]
賃	東北	455	379	38	2	7	29
	[前月比]	[19.4]	[25.1]	[5.6]	[0.0]	[-30.0]	[-3.3]
域	関東甲信越	489	345	60	5	8	71
	[前月比]	[14.0]	[9.9]	[39.5]	[400.0]	[-27.3]	[18.3]
物	首都圏	20,961	19,202	524	29	99	1,107
	[前月比]	[26.8]	[29.7]	[22.4]	[7.4]	[37.5]	[-7.8]
件	中部4県	379	243	41	3	8	84
	[前月比]	[46.9]	[54.8]	[28.1]	[50.0]	[-27.3]	[50.0]
別	中部圏	689	589	24	5	11	60
	[前月比]	[30.7]	[33.6]	[84.6]	[-37.5]	[-8.3]	[13.2]
態	近畿圏	12,711	11,423	489	22	159	618
	[前月比]	[21.8]	[24.1]	[6.8]	[22.2]	[1.3]	[3.5]
様	中国	194	124	38	1	4	27
	[前月比]	[14.1]	[19.2]	[40.7]	[-66.7]	[-73.3]	[28.6]
別	四国	79	43	15	2	1	18
	[前月比]	[61.2]	[43.3]	[66.7]	[-]	[-]	[80.0]
件	九州	1,784	1,564	79	6	26	109
	[前月比]	[23.3]	[27.5]	[17.9]	[20.0]	[-3.7]	[-9.9]

* 成約件数は成約報告のあった件数である。

指定流通機構実態調査集計、総括表 当月末総登録件数

		総 数	物 件 種 別					
			マンション	一 戸 建	土 地	住宅外全部	住宅外一部	
全	総計件数 [前月比]	837,892 [-2.6]	398,046 [-5.1]	157,343 [0.0]	176,884 [-0.5]	34,296 [0.5]	71,323 [0.3]	
売	総 計 [前月比]	431,971 [0.0]	94,632 [0.9]	139,217 [-0.1]	171,976 [-0.6]	24,416 [1.1]	1,730 [4.6]	
	地	北海道 [前月比]	17,475 [-1.5]	2,879 [1.5]	5,108 [-2.1]	7,993 [-2.5]	1,457 [-0.1]	38 [15.2]
り	東 北 [前月比]	23,030 [-1.3]	2,222 [0.5]	7,621 [-3.9]	11,771 [0.0]	1,362 [0.0]	54 [1.9]	
	域	関東甲信越 [前月比]	37,991 [-1.0]	1,849 [-1.1]	10,993 [-0.2]	23,117 [-1.4]	1,949 [-0.9]	83 [1.2]
物	別	首都圏 [前月比]	127,494 [1.2]	45,878 [1.2]	40,700 [1.1]	32,438 [0.7]	7,641 [2.4]	837 [9.0]
		中部4県 [前月比]	25,087 [-1.9]	2,098 [-2.1]	7,802 [-1.6]	13,699 [-2.2]	1,434 [-0.5]	54 [-12.9]
件	取	中部圏 [前月比]	41,881 [-0.2]	6,859 [1.5]	11,657 [-0.6]	21,050 [-0.8]	2,244 [3.1]	71 [-6.6]
	引	近畿圏 [前月比]	80,328 [1.6]	21,447 [0.7]	30,007 [1.5]	24,557 [2.1]	3,883 [3.1]	434 [2.6]
態	様	中国 [前月比]	23,498 [-2.2]	2,180 [-1.3]	8,179 [-1.8]	11,943 [-2.6]	1,167 [-3.2]	29 [3.6]
	別	四国 [前月比]	9,689 [0.4]	869 [3.5]	2,791 [0.3]	5,450 [-0.1]	557 [1.5]	22 [4.8]
別	九	九州 [前月比]	45,498 [-1.5]	8,351 [0.3]	14,359 [-1.8]	19,958 [-2.0]	2,722 [-2.1]	108 [0.0]
	専	専属専任 [前月比]	42,447 [-0.6]	11,645 [-0.4]	13,481 [-0.3]	14,798 [-1.1]	2,398 [-0.6]	125 [1.6]
賃	地	専任媒介 [前月比]	165,751 [0.0]	40,694 [0.9]	51,926 [-0.1]	64,229 [-0.5]	8,333 [0.4]	569 [3.8]
	賃	一般媒介 [前月比]	128,926 [-1.3]	22,356 [-1.0]	33,371 [-1.1]	62,184 [-1.9]	10,467 [0.7]	548 [0.2]
物	件	売主 [前月比]	89,959 [1.9]	18,602 [3.7]	39,190 [0.4]	29,168 [2.6]	2,569 [3.4]	430 [10.3]
	別	代理 [前月比]	4,888 [6.4]	1,335 [5.0]	1,249 [14.0]	1,597 [-0.7]	649 [13.3]	58 [26.1]
賃	地	総 計 [前月比]	405,921 [-5.1]	303,414 [-6.8]	18,126 [1.2]	4,908 [0.9]	9,880 [-0.7]	69,593 [0.2]
	賃	北海道 [前月比]	3,187 [-1.7]	2,615 [-1.2]	95 [-3.1]	48 [-5.9]	77 [-6.1]	352 [-3.3]
物	件	東 北 [前月比]	12,430 [0.8]	10,100 [1.0]	489 [4.9]	173 [-7.5]	219 [-6.4]	1,449 [-0.3]
	別	関東甲信越 [前月比]	14,480 [1.7]	10,668 [1.5]	828 [6.7]	441 [0.5]	561 [2.9]	1,982 [0.9]
賃	地	首都圏 [前月比]	228,070 [-8.1]	177,721 [-10.1]	7,508 [-0.1]	1,401 [4.7]	3,106 [-3.2]	38,334 [0.1]
	賃	中部4県 [前月比]	8,174 [0.2]	4,827 [-0.1]	605 [5.6]	258 [-0.8]	522 [-9.8]	1,962 [2.3]
物	件	中部圏 [前月比]	9,927 [-1.9]	5,986 [-3.6]	528 [3.1]	547 [-2.7]	505 [3.1]	2,361 [0.7]
	別	近畿圏 [前月比]	99,432 [-1.5]	72,095 [-2.5]	5,743 [2.4]	1,088 [3.3]	3,487 [1.8]	17,019 [0.4]
賃	地	中国 [前月比]	7,944 [-1.5]	4,845 [-0.2]	745 [-7.5]	273 [-1.4]	372 [4.5]	1,709 [-3.7]
	賃	四国 [前月比]	2,631 [-0.8]	1,352 [-4.1]	309 [0.7]	115 [6.5]	172 [3.0]	683 [3.6]
物	件	九州 [前月比]	19,646 [-1.9]	13,205 [-3.0]	1,276 [2.1]	564 [-4.2]	859 [-0.5]	3,742 [0.7]