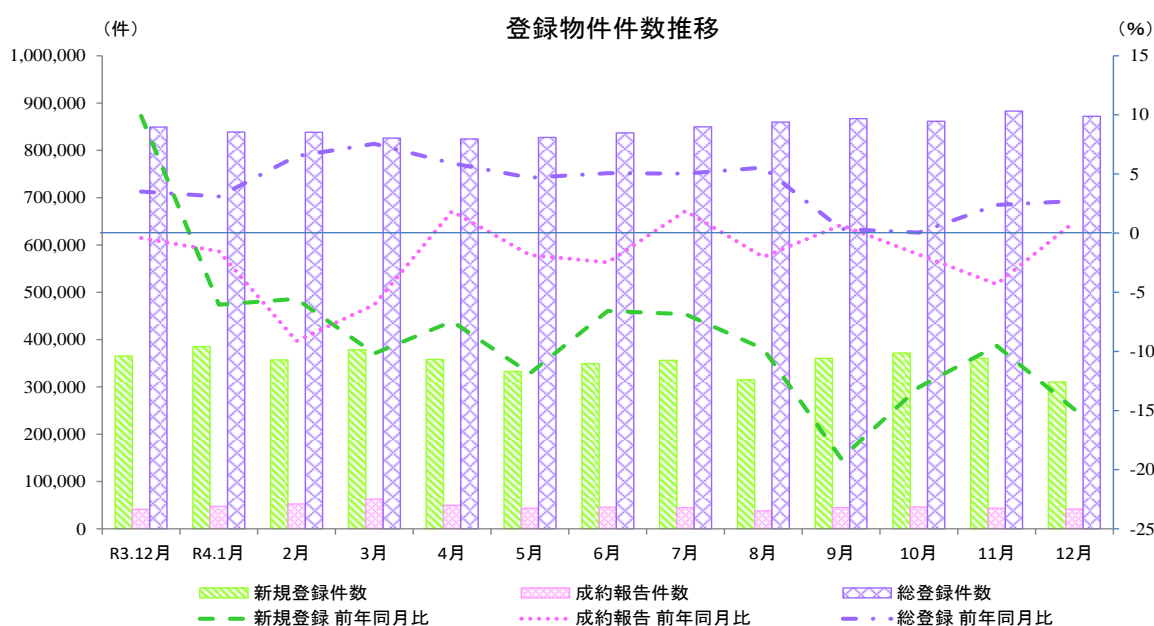


指定流通機構の活用状況について（令和4年12月分）

1. 概況

令和4年12月の指定流通機構の活用状況をみると、新規登録件数は310,736件と前年同月比で12ヶ月連続してマイナスとなり、前月比では2ヶ月連続してマイナスとなった。成約報告件数は41,795件と前年同月比で3ヶ月ぶりにプラスに転じ、前月比では2ヶ月連続してマイナスとなった。総登録件数は872,241件と前年同月比で17ヶ月連続してプラスとなり、前月比ではふたたびマイナスに転じた。



物件件数の推移

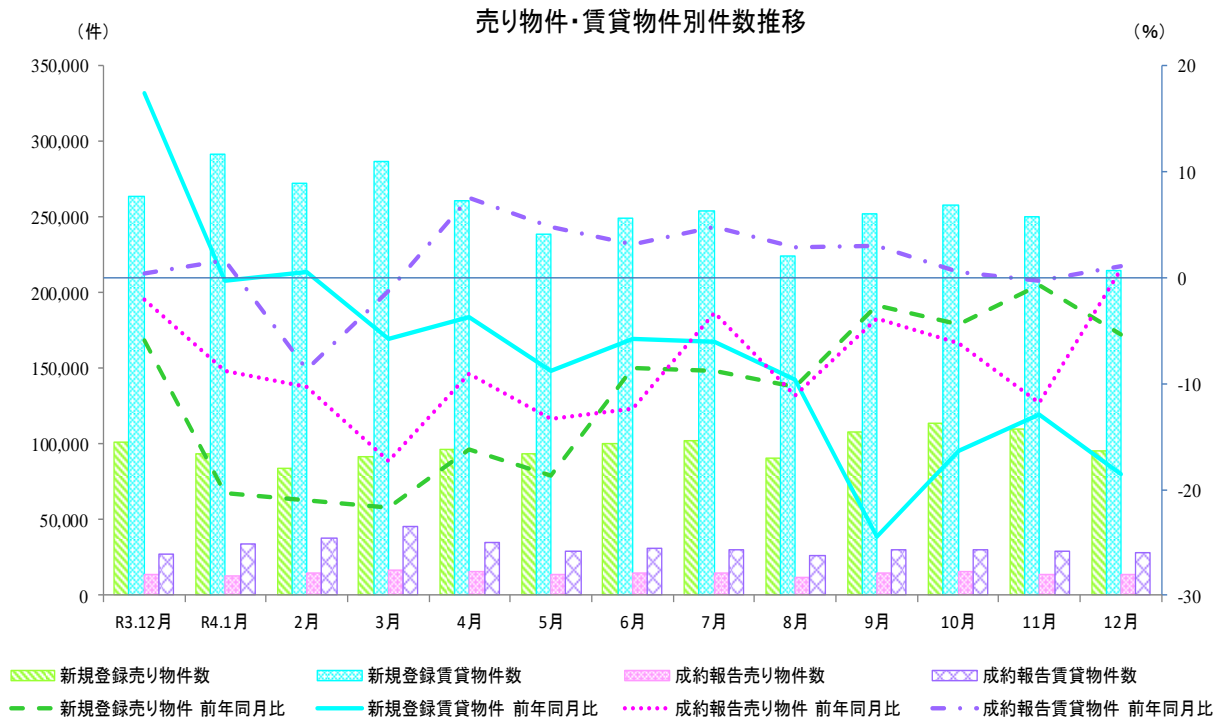
	R3.12月	R4.1月	2月	3月	4月	5月	6月	7月	8月	9月	10月	11月	12月
新規登録件数(件)	365,158	385,517	357,213	378,723	357,811	332,763	349,131	356,111	315,145	360,257	371,910	360,311	310,736
前年同月比(%)	9.9	▲6.0	▲5.6	▲10.2	▲7.5	▲11.8	▲6.6	▲6.9	▲9.8	▲19.0	▲13.0	▲9.5	▲14.9
前月比(%)	▲8.3	5.6	▲7.3	6.0	▲5.5	▲7.0	4.9	2.0	▲11.5	14.3	3.2	▲3.1	▲13.8
成約報告件数(件)	41,400	47,718	52,704	62,418	49,822	43,635	45,930	45,054	38,046	44,842	46,008	43,490	41,795
前年同月比(%)	▲0.4	▲1.5	▲9.1	▲6.1	1.9	▲1.9	▲2.5	1.9	▲2.0	0.7	▲1.8	▲4.3	1.0
前月比(%)	▲8.9	15.3	10.4	18.4	▲20.2	▲12.4	5.3	▲1.9	▲15.6	17.9	2.6	▲5.5	▲3.9
総登録件数(件)	849,180	838,799	838,038	825,903	823,907	827,328	836,832	849,660	859,585	867,139	861,737	882,895	872,241
前年同月比(%)	3.5	3.1	6.5	7.6	5.9	4.7	5.1	5.0	5.5	0.4	0.0	2.4	2.7
前月比(%)	▲1.5	▲1.2	▲0.1	▲1.4	▲0.2	0.4	1.1	1.5	1.2	0.9	▲0.6	2.5	▲1.2

※ 公益社団法人西日本不動産流通機構より、中国、四国、九州の平成31年4月から令和3年12月まで（以下「対象期間」といいます。）の新規登録件数について確認を行っているとの連絡を受けております。対象期間のこれらの地域及び全国合計の新規登録件数、並びにこの件数を用いて算出されている前年比の数値のご利用に当たってはご注意ください。

2. 売り・賃貸別物件数

令和4年12月の売り物件数をみると、新規登録件数は95,519件と前年同月比で33ヶ月連続してマイナスとなり、前月比では2ヶ月連続してマイナスとなった。成約報告件数は13,916件と前年同月比で18ヶ月ぶりにプラスに転じ、前月比では2ヶ月連続してマイナスとなった。総登録件数は330,675件と前年同月比で7ヶ月連続してプラスとなり、前月比では8ヶ月連続してプラスとなった。

令和4年12月の賃貸物件数をみると、新規登録件数は215,217件と前年同月比で10ヶ月連続してマイナスとなり、前月比では2ヶ月連続してマイナスとなった。成約報告件数は27,879件と前年同月比でふたたびプラスに転じ、前月比では2ヶ月連続してマイナスとなった。総登録件数は541,566件と前年同月比で4ヶ月連続してマイナスとなり、前月比ではふたたびマイナスに転じた。



R4年12月 売り物件・賃貸物件別件数

新規登録件数	310,736 件	前年同月比 ▲ 14.9 %	前月比 ▲ 13.8 %
売り物件	95,519 件	前年同月比 ▲ 5.3 %	前月比 ▲ 12.8 %
賃貸物件	215,217 件	前年同月比 ▲ 18.6 %	前月比 ▲ 14.2 %
成約報告件数	41,795 件	前年同月比 1.0 %	前月比 ▲ 3.9 %
売り物件	13,916 件	前年同月比 0.8 %	前月比 ▲ 0.7 %
賃貸物件	27,879 件	前年同月比 1.0 %	前月比 ▲ 5.4 %
総登録件数	872,241 件	前年同月比 2.7 %	前月比 ▲ 1.2 %
売り物件	330,675 件	前年同月比 13.6 %	前月比 1.0 %
賃貸物件	541,566 件	前年同月比 ▲ 2.9 %	前月比 ▲ 2.51 %

凡例: ▲ 10% ~ 🟡 3% ~ 10% ➡️ -3% ~ 3% 🟡 -10% ~ -3% 🟡 ~ -10%

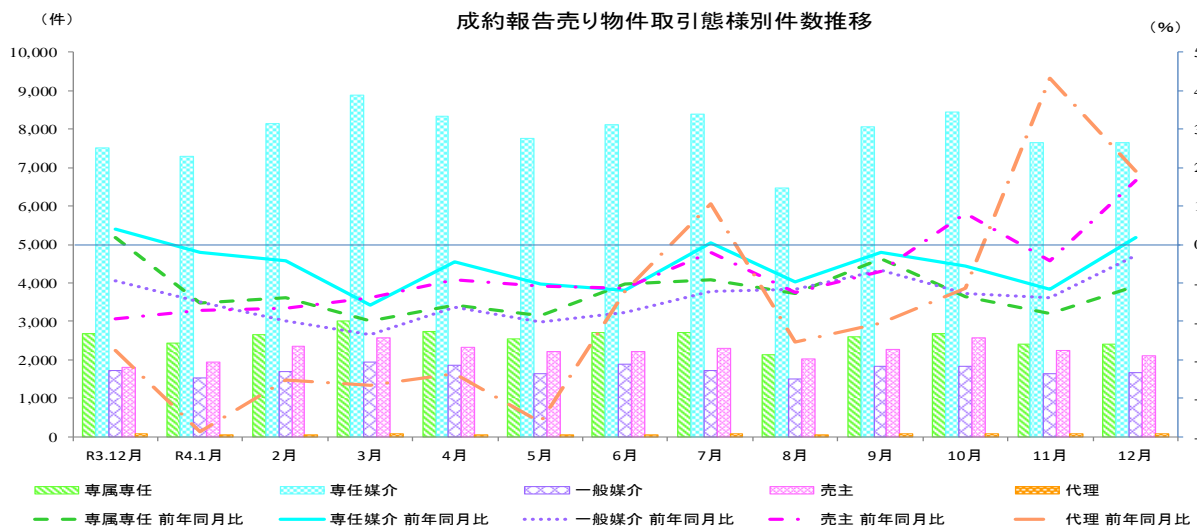
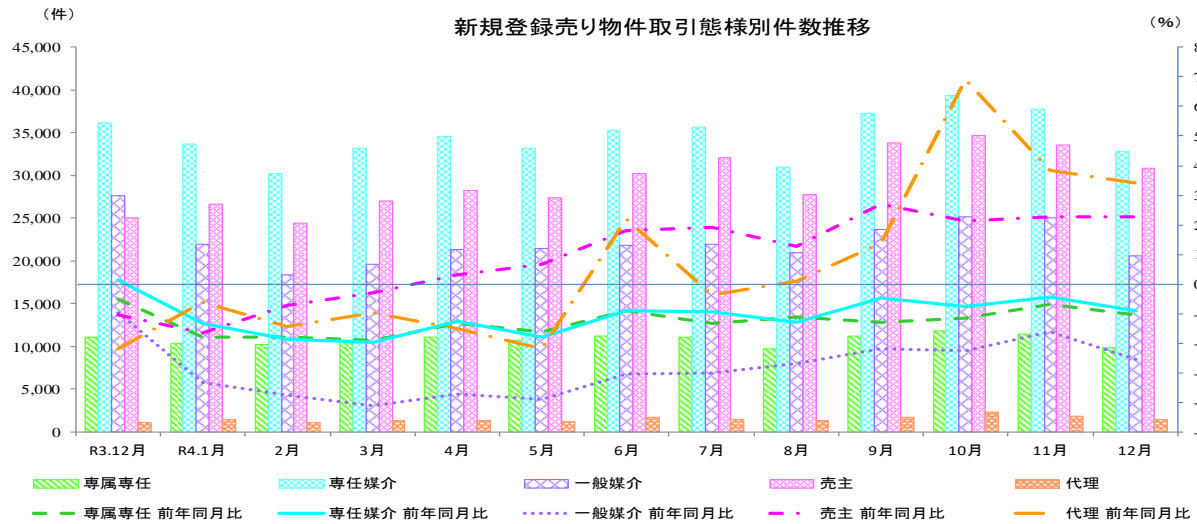
3. 売り物件の取引態様別物件数

令和4年12月の新規登録売り物件の取引態様別をみると、専任媒介は34.4%を占め、次いで売主は32.2%を占めている。成約報告売り物件の取引態様別をみると、専任媒介は55.1%を占め、次いで専属専任は17.2%を占めている。

R4年12月 売り物件の取引態様別件数

	取引態様	件数	構成比	前年同月比	前月比
新規登録件数	媒介契約	63,274 件	66.2 %	▲ 15.4 %	▲ 14.7 %
	専属専任	9,855 件	10.3 %	▲ 10.6 %	▲ 13.7 %
	専任媒介	32,856 件	34.4 %	▲ 9.1 %	▲ 12.9 %
	一般媒介	20,563 件	21.5 %	▲ 25.5 %	▲ 17.9 %
	売主	30,792 件	32.2 %	22.8 %	▲ 8.4 %
	代理	1,453 件	1.5 %	34.2 %	▲ 18.6 %
成約報告件数	媒介契約	11,726 件	84.3 %	▲ 1.7 %	0.2 %
	専属専任	2,396 件	17.2 %	▲ 10.9 %	0.1 %
	専任媒介	7,662 件	55.1 %	1.9 %	0.0 %
	一般媒介	1,668 件	12.0 %	▲ 2.9 %	1.1 %
	売主	2,115 件	15.2 %	16.5 %	▲ 5.5 %
	代理	75 件	0.5 %	19.0 %	2.7 %

凡例: ▲ 10% ~ ▲ 3% ~ 10% ➡ -3% ~ 3% ▼ -10% ~ -3% ▼ ~ -10%



指定流通機構実態調査集計、総括表 新規登録件数

		総 数	物 件 種 別				
			マンション	一 戸 建	土 地	住宅外全部	住宅外一部
全 総計件数		310,736	225,963	36,446	25,106	6,972	16,249
[前月比]		[-13.8]	[-12.0]	[-16.5]	[-20.7]	[-16.1]	[-18.7]
売 地	総 計	95,519	34,906	30,846	24,405	4,929	433
	[前月比]	[-12.8]	[-3.3]	[-15.5]	[-20.8]	[-14.0]	[-8.6]
	北海道	3,466	1,056	944	1,197	264	5
	[前月比]	[-8.5]	[-6.4]	[-5.1]	[-13.3]	[-5.7]	25.0]
	東北	3,551	606	1,504	1,263	170	8
	[前月比]	[-4.0]	[-14.2]	8.4]	[-9.5]	[-15.4]	[-20.0]
	関東甲信越	5,316	495	2,031	2,383	400	7
	[前月比]	[-23.2]	[-7.8]	[-31.1]	[-20.7]	[-4.8]	[-12.5]
	首都圏	44,065	22,302	11,994	7,137	2,337	295
	[前月比]	[-3.7]	[-0.6]	[-7.9]	[-4.6]	[-5.2]	[-6.3]
	中部4県	3,648	458	1,214	1,754	216	6
	[前月比]	[-50.0]	[-28.5]	[-48.8]	[-55.0]	[-41.8]	[-50.0]
	中部圏	7,398	1,679	2,838	2,507	360	14
	[前月比]	[-2.6]	5.7]	[-10.5]	2.1]	[-1.4]	16.7]
	近畿圏	15,488	5,642	5,888	3,299	583	76
	[前月比]	[-8.3]	[-3.2]	[-9.6]	[-14.0]	[-10.3]	2.7]
	中国	3,302	479	1,203	1,474	139	7
[前月比]	[-59.8]	[-36.6]	[-57.9]	[-65.2]	[-61.6]	[-41.7]	
四国	1,882	150	446	1,181	104	1	
[前月比]	25.0]	[-39.0]	[-6.9]	74.7]	4.0]	[-80.0]	
九州	7,403	2,039	2,784	2,210	356	14	
[前月比]	[-6.9]	[-7.8]	0.7]	[-9.3]	[-31.3]	[-36.4]	
取 引 態 様 別	専属専任	9,855	4,004	2,693	2,448	675	35
	[前月比]	[-13.7]	[-4.3]	[-15.2]	[-22.7]	[-20.6]	[-25.5]
	専任媒介	32,856	11,570	9,732	9,834	1,577	143
	[前月比]	[-12.9]	[-5.2]	[-15.8]	[-18.2]	[-11.7]	[-11.7]
	一般媒介	20,563	6,392	5,768	6,364	1,914	125
	[前月比]	[-17.9]	[-3.6]	[-23.2]	[-25.7]	[-12.9]	[-8.1]
売主	30,792	12,328	12,284	5,471	591	118	
[前月比]	[-8.4]	[-0.5]	[-10.8]	[-17.6]	[-16.8]	10.3]	
代理	1,453	612	369	288	172	12	
[前月比]	[-18.6]	[-9.2]	[-24.7]	[-29.6]	[-9.9]	[-45.5]	
賃 地	総 計	215,217	191,057	5,600	701	2,043	15,816
	[前月比]	[-14.2]	[-13.4]	[-21.6]	[-18.9]	[-20.7]	[-18.9]
	北海道	1,908	1,823	27	4	13	41
	[前月比]	[-15.3]	[-14.8]	[-27.0]	[-42.9]	[-48.0]	[-8.9]
	東北	5,263	4,895	114	20	32	202
	[前月比]	[-2.0]	[-3.5]	8.6]	[-23.1]	100.0]	33.8]
	関東甲信越	8,891	8,309	240	44	68	230
	[前月比]	[-2.6]	[-0.1]	[-10.4]	[-18.5]	[-37.6]	[-39.0]
	首都圏	152,090	137,417	2,805	243	793	10,832
	[前月比]	[-10.9]	[-10.8]	[-9.7]	[-4.7]	[-21.9]	[-11.2]
	中部4県	2,041	1,443	152	34	133	279
	[前月比]	[-45.7]	[-45.1]	[-40.9]	[-38.2]	[-37.0]	[-54.3]
	中部圏	2,679	1,981	97	77	86	438
	[前月比]	[-22.8]	[-33.0]	[-45.8]	37.5]	[-3.4]	131.7]
	近畿圏	33,321	28,090	1,454	147	684	2,946
	[前月比]	[-15.0]	[-14.9]	[-13.8]	[-17.9]	[-7.3]	[-18.2]
	中国	2,091	1,363	296	33	78	321
[前月比]	[-77.2]	[-77.7]	[-71.0]	[-77.1]	[-66.4]	[-80.5]	
四国	598	392	52	40	38	76	
[前月比]	0.3]	[-14.0]	0.0]	400.0]	137.5]	18.8]	
九州	6,335	5,344	363	59	118	451	
[前月比]	[-11.4]	[-9.2]	[-15.8]	[-26.3]	[-4.8]	[-28.2]	

* 前月比欄の数値は、対前月増減率である。

* 「関東甲信越」は、茨城県・栃木県・群馬県・新潟県・山梨県・長野県、「首都圏」は、東京都・千葉県・埼玉県・神奈川県、「中部圏」は、愛知県・岐阜県・三重県、「中部4県」は、富山県・石川県・福井県・静岡県、「近畿圏」は、大阪府・京都府・兵庫県・滋賀県・奈良県・和歌山県をいう。

指定流通機構実態調査 売り物件・新規登録件数 時系列表

	3年12月	4年1月	4年2月	4年3月	4年4月	4年5月	4年6月	4年7月	4年8月	4年9月	4年10月	4年11月	4年12月	一年間計	
	件数	件数	件数	件数	件数	件数	件数	件数	件数	件数	件数	件数	件数	件数	
	(前月比)	(前月比)	(前月比)	(前月比)	(前月比)	(前月比)	(前月比)	(前月比)	(前月比)	(前月比)	(前月比)	(前月比)	(前月比)	(前月比)	(構成比)
	(前年比)	(前年比)	(前年比)	(前年比)	(前年比)	(前年比)	(前年比)	(前年比)	(前年比)	(前年比)	(前年比)	(前年比)	(前年比)	(前年比)	
総数	100,913 (-8.5) [-5.9]	94,030 (-6.8) [-20.3]	84,288 (-10.4) [-21.0]	91,889 (9.0) [-21.7]	96,632 (5.2) [-16.3]	93,871 (-2.9) [-18.7]	100,117 (6.7) [-8.5]	102,239 (2.1) [-8.8]	90,777 (-11.2) [-10.3]	107,802 (18.8) [-2.5]	113,385 (5.2) [-4.4]	109,600 (-3.3) [-0.6]	95,519 (-12.8) [-5.3]	1,180,149	
北海道	2,271 (-9.6) [14.5]	2,124 (-6.5) [-4.1]	2,096 (-1.3) [6.4]	2,426 (15.7) [7.0]	2,779 (14.6) [14.3]	3,040 (9.4) [28.8]	3,695 (21.5) [56.7]	3,677 (-0.5) [36.5]	3,248 (-11.7) [45.7]	4,027 (24.0) [53.4]	4,182 (3.8) [48.9]	3,788 (-9.4) [50.7]	3,466 (-8.5) [52.6]	38,548 (3.3)	
東北	2,804 (-7.7) [-16.4]	2,906 (3.6) [-24.2]	2,687 (-7.5) [-2.2]	2,864 (6.6) [-9.7]	3,498 (22.1) [9.9]	3,494 (-0.1) [22.2]	3,728 (6.7) [22.4]	3,850 (3.3) [28.4]	3,627 (-5.8) [32.7]	4,032 (11.2) [27.8]	4,059 (0.7) [19.6]	3,700 (-8.8) [21.8]	3,551 (-4.0) [26.6]	41,996 (3.6)	
関東甲信越	4,052 (-10.5) [0.8]	5,034 (24.2) [-4.8]	4,294 (-14.7) [1.3]	5,167 (20.3) [10.4]	5,676 (9.9) [22.2]	5,889 (3.8) [22.6]	6,788 (15.3) [44.9]	6,733 (-0.8) [37.7]	6,502 (-3.4) [73.4]	7,419 (14.1) [52.9]	7,747 (4.4) [73.4]	6,918 (-10.7) [52.7]	5,316 (-23.2) [31.2]	73,483 (6.2)	
圏	33,328 (-11.0) [-1.5]	37,049 (11.2) [-3.3]	37,596 (1.5) [4.7]	40,743 (8.4) [7.1]	43,251 (6.2) [13.9]	40,643 (-6.0) [17.3]	45,127 (11.0) [30.0]	46,087 (2.1) [24.3]	39,149 (-15.1) [22.3]	48,937 (25.0) [34.8]	51,750 (5.7) [29.9]	45,738 (-11.6) [22.1]	44,065 (-3.7) [32.2]	520,135 (44.1)	
別	3,145 (-15.9) [-11.8]	3,836 (22.0) [-20.4]	3,133 (-18.3) [-16.5]	3,771 (20.4) [-15.2]	4,151 (10.1) [-28.6]	4,086 (-1.6) [-43.3]	4,068 (-0.4) [-15.8]	3,967 (-2.5) [4.3]	3,947 (-0.5) [5.6]	4,424 (12.1) [9.4]	4,506 (1.9) [12.3]	7,289 (61.8) [95.0]	3,648 (-50.0) [16.0]	50,826 (4.3)	
内	5,943 (-11.1) [-7.7]	7,190 (21.0) [-4.0]	6,741 (-6.2) [6.1]	7,354 (9.1) [2.6]	7,652 (4.1) [5.6]	7,108 (-7.1) [0.3]	7,532 (6.0) [11.8]	7,764 (3.1) [17.7]	7,044 (-9.3) [15.8]	7,849 (11.4) [14.8]	8,709 (11.0) [23.9]	7,593 (-12.8) [13.6]	7,398 (-2.6) [24.5]	89,934 (7.6)	
近畿圏	16,311 (-7.1) [-9.5]	17,301 (6.1) [-11.0]	15,742 (-9.0) [-16.1]	17,115 (8.7) [-15.4]	16,728 (-2.3) [-11.0]	16,032 (-4.2) [-12.2]	16,429 (2.5) [-9.3]	17,598 (7.1) [-5.5]	14,750 (-16.2) [-10.5]	18,288 (24.0) [-2.2]	18,605 (1.7) [-6.8]	16,899 (-9.2) [-3.7]	15,488 (-8.3) [-5.0]	200,975 (17.0)	
中国	6,855 (-2.1) [1.8]	3,613 (-47.3) [-49.4]	2,940 (-18.6) [-54.2]	3,383 (15.1) [-58.1]	3,985 (17.8) [-41.0]	4,080 (2.4) [-44.2]	4,003 (-1.9) [-41.6]	3,667 (-8.4) [-47.4]	3,207 (-12.5) [-49.5]	3,526 (9.9) [-46.5]	3,684 (4.5) [-53.1]	8,217 (123.0) [17.3]	3,302 (-59.8) [-51.8]	47,607 (4.0)	
四国	3,485 (-20.4) [-5.0]	4,361 (25.1) [21.9]	1,726 (-60.4) [-57.0]	1,358 (-21.3) [-65.3]	1,192 (-12.2) [-71.0]	1,946 (63.3) [-62.5]	1,283 (-35.1) [-68.0]	1,283 (0.0) [-66.9]	1,650 (28.6) [-60.6]	1,251 (-24.2) [-66.9]	1,300 (3.9) [-66.6]	1,506 (15.8) [-65.6]	1,882 (25.0) [-46.0]	20,717 (1.8)	
九州	22,719 (-2.9) [-11.2]	10,616 (-53.3) [-58.9]	7,333 (-30.9) [-67.5]	7,708 (5.1) [-69.6]	7,720 (0.2) [-68.4]	7,553 (-2.2) [-70.7]	7,485 (-0.9) [-68.9]	7,613 (1.7) [-69.0]	7,653 (0.5) [-67.1]	8,049 (5.2) [-66.9]	8,843 (9.9) [-64.3]	7,952 (-10.1) [-66.0]	7,403 (-6.9) [-67.4]	95,928 (8.1)	
取	11,028 (-10.0) [-5.0]	10,292 (-6.7) [-18.1]	10,191 (-1.0) [-18.1]	10,762 (5.6) [-19.2]	11,134 (3.5) [-13.2]	10,728 (-3.6) [-16.2]	11,172 (4.1) [-9.2]	11,330 (-0.4) [-13.3]	9,699 (-12.9) [-11.2]	11,246 (16.0) [-13.2]	11,865 (5.5) [-11.5]	11,420 (-3.8) [-6.8]	9,855 (-13.7) [-10.6]	129,494 (11.0)	
引	36,129 (-8.4) [1.3]	33,737 (-6.6) [-13.5]	30,279 (-10.2) [-18.7]	33,251 (9.8) [-19.9]	34,550 (3.9) [-12.7]	33,191 (-3.9) [-17.9]	35,292 (6.3) [-9.0]	35,670 (1.1) [-9.3]	30,919 (-13.3) [-12.9]	37,327 (20.7) [-4.7]	39,357 (5.4) [-7.7]	37,738 (-4.1) [-4.3]	32,856 (-12.9) [-9.1]	414,167 (35.1)	
態	27,603 (-7.8) [-9.6]	22,006 (-20.3) [-33.4]	18,366 (-16.5) [-37.7]	19,581 (6.6) [-41.1]	21,333 (8.9) [-37.3]	21,403 (0.3) [-39.1]	21,818 (1.9) [-30.4]	21,905 (0.4) [-30.3]	20,999 (-4.1) [-27.1]	23,734 (13.0) [-21.8]	25,169 (6.0) [-22.8]	25,045 (-0.5) [-16.4]	20,563 (-17.9) [-25.5]	261,922 (22.2)	
別	25,070 (-8.4) [-10.4]	26,599 (6.1) [-16.4]	24,383 (-8.3) [-7.4]	26,987 (10.7) [-3.2]	28,265 (4.7) [3.2]	27,345 (-3.3) [6.7]	30,170 (10.3) [17.9]	32,051 (6.2) [19.0]	27,788 (-13.3) [12.8]	33,851 (21.8) [26.8]	34,731 (2.6) [21.3]	33,611 (-3.2) [22.9]	30,792 (-8.4) [22.8]	356,573 (30.2)	
代理	1,083 (-16.1) [-22.1]	1,396 (28.9) [-6.2]	1,069 (-23.4) [-14.4]	1,308 (22.4) [-9.8]	1,350 (3.2) [-15.3]	1,204 (-10.8) [-21.8]	1,665 (38.3) [21.9]	1,483 (-10.9) [-3.8]	1,372 (-7.5) [1.0]	1,644 (19.8) [37.7]	2,263 (37.1) [69.1]	1,786 (-21.1) [38.3]	1,453 (-18.6) [34.2]	17,993 (1.5)	
物	32,223 (-8.5) [-4.1]	33,376 (3.6) [-6.9]	32,020 (-4.1) [-4.2]	35,295 (10.2) [-1.7]	35,321 (0.1) [2.1]	33,193 (-6.0) [-0.1]	36,102 (8.8) [10.3]	36,571 (1.3) [4.7]	31,683 (-13.4) [2.2]	38,012 (20.0) [9.9]	41,383 (8.9) [9.7]	36,090 (-12.8) [2.5]	34,906 (-3.3) [8.3]	423,952 (35.9)	
件	32,328 (-8.3) [-4.5]	29,985 (-7.2) [-21.6]	25,760 (-14.1) [-24.3]	28,487 (10.6) [-24.7]	30,430 (6.8) [-19.6]	29,729 (-2.3) [-21.4]	31,653 (6.5) [-12.0]	33,175 (4.8) [-7.7]	29,395 (-11.4) [-8.1]	35,535 (20.9) [-0.4]	37,062 (4.3) [-4.2]	36,507 (-1.5) [3.5]	30,846 (-15.5) [-4.6]	378,564 (32.1)	
種	30,942 (-8.4) [-9.4]	25,142 (-18.7) [-33.4]	21,558 (-14.3) [-35.8]	22,541 (4.6) [-39.3]	25,222 (11.9) [-31.1]	25,562 (1.3) [-33.1]	26,476 (3.6) [-22.9]	26,608 (0.5) [-23.7]	24,463 (-8.1) [-24.6]	28,170 (15.2) [-17.8]	28,383 (0.8) [-20.1]	30,796 (8.5) [-8.9]	24,405 (-20.8) [-21.1]	309,326 (28.2)	
別	4,934 (-9.4) [-4.7]	4,954 (0.4) [-10.7]	4,463 (-9.9) [-14.2]	5,004 (12.1) [-15.7]	5,151 (2.9) [-10.7]	4,901 (-4.9) [-14.1]	5,414 (10.5) [-6.6]	5,348 (-1.2) [-8.1]	4,748 (-11.2) [-12.5]	5,551 (16.9) [-0.1]	5,970 (7.5) [-2.9]	5,733 (-4.0) [5.3]	4,929 (-14.0) [-0.1]	62,166 (5.3)	
住宅外(一部)	486 (-18.0) [8.2]	573 (17.9) [-2.7]	487 (-15.0) [-6.2]	562 (15.4) [-4.3]	508 (-9.6) [-10.4]	486 (-4.3) [-9.2]	472 (-2.9) [-14.8]	537 (13.8) [2.9]	488 (-9.1) [23.2]	534 (9.4) [2.3]	587 (9.9) [3.3]	474 (-19.3) [-20.1]	433 (-8.6) [-10.9]	6,141 (0.5)	

※ 構成比は、四捨五入による端数処理のため内数の合計が100%にならないことがある

指定流通機構実態調査集計、総括表 地域別取引態様別売物件月間新規登録件数

地域	取引態様	総数	物件種別				
			マンション	一戸建	土地	住宅外全部	住宅外一部
北海道	専属専任 [構成比]	278 [8.0]	80 [7.6]	69 [7.3]	105 [8.8]	24 [9.1]	0 [0.0]
	専任媒介 [構成比]	1,559 [45.0]	328 [31.1]	532 [56.4]	552 [46.1]	142 [53.8]	5 [100.0]
	一般媒介 [構成比]	781 [22.5]	152 [14.4]	175 [18.5]	373 [31.2]	81 [30.7]	0 [0.0]
	売主 [構成比]	833 [24.0]	493 [46.7]	161 [17.1]	165 [13.8]	14 [5.3]	0 [0.0]
	代理 [構成比]	15 [0.4]	3 [0.3]	7 [0.7]	2 [0.2]	3 [1.1]	0 [0.0]
	合計 [地域比]	3,466 [3.6]	1,056 [3.0]	944 [3.1]	1,197 [4.9]	264 [5.4]	5 [1.2]
東北	専属専任 [構成比]	230 [6.5]	46 [7.6]	64 [4.3]	90 [7.1]	27 [15.9]	3 [37.5]
	専任媒介 [構成比]	1,316 [37.1]	244 [40.3]	521 [34.6]	508 [40.2]	43 [25.3]	0 [0.0]
	一般媒介 [構成比]	899 [25.3]	108 [17.8]	278 [18.5]	420 [33.3]	89 [52.4]	4 [50.0]
	売主 [構成比]	1,093 [30.8]	206 [34.0]	641 [42.6]	235 [18.6]	10 [5.9]	1 [12.5]
	代理 [構成比]	13 [0.4]	2 [0.3]	0 [0.0]	10 [0.8]	1 [0.6]	0 [0.0]
	合計 [地域比]	3,551 [3.7]	606 [1.7]	1,504 [4.9]	1,263 [5.2]	170 [3.4]	8 [1.8]
関東甲信越	専属専任 [構成比]	266 [5.0]	21 [4.2]	76 [3.7]	116 [4.9]	53 [13.3]	0 [0.0]
	専任媒介 [構成比]	1,892 [35.6]	208 [42.0]	633 [31.2]	917 [38.5]	132 [33.0]	2 [28.6]
	一般媒介 [構成比]	1,536 [28.9]	180 [36.4]	402 [19.8]	780 [32.7]	172 [43.0]	2 [28.6]
	売主 [構成比]	1,564 [29.4]	81 [16.4]	903 [44.5]	541 [22.7]	36 [9.0]	3 [42.9]
	代理 [構成比]	58 [1.1]	5 [1.0]	17 [0.8]	29 [1.2]	7 [1.8]	0 [0.0]
	合計 [地域比]	5,316 [5.6]	495 [1.4]	2,031 [6.6]	2,383 [9.8]	400 [8.1]	7 [1.6]
首都圏	専属専任 [構成比]	4,461 [10.1]	2,569 [11.5]	803 [6.7]	764 [10.7]	305 [13.1]	20 [6.8]
	専任媒介 [構成比]	13,689 [31.1]	6,317 [28.3]	3,748 [31.2]	2,877 [40.3]	662 [28.3]	85 [28.8]
	一般媒介 [構成比]	6,061 [13.8]	3,106 [13.9]	1,073 [8.9]	929 [13.0]	868 [37.1]	85 [28.8]
	売主 [構成比]	18,899 [42.9]	9,811 [44.0]	6,192 [51.6]	2,416 [33.9]	382 [16.3]	98 [33.2]
	代理 [構成比]	955 [2.2]	499 [2.2]	178 [1.5]	151 [2.1]	120 [5.1]	7 [2.4]
	合計 [地域比]	44,065 [46.1]	22,302 [63.9]	11,994 [38.9]	7,137 [29.2]	2,337 [47.4]	295 [68.1]
中部四県	専属専任 [構成比]	338 [9.3]	31 [6.8]	108 [8.9]	182 [10.4]	17 [7.9]	0 [0.0]
	専任媒介 [構成比]	1,278 [35.0]	199 [43.4]	347 [28.6]	659 [37.6]	73 [33.8]	0 [0.0]
	一般媒介 [構成比]	1,290 [35.4]	176 [38.4]	369 [30.4]	654 [37.3]	89 [41.2]	2 [33.3]
	売主 [構成比]	708 [19.4]	49 [10.7]	384 [31.6]	243 [13.9]	28 [13.0]	4 [66.7]
	代理 [構成比]	34 [0.9]	3 [0.7]	6 [0.5]	16 [0.9]	9 [4.2]	0 [0.0]
	合計 [地域比]	3,648 [3.8]	458 [1.3]	1,214 [3.9]	1,754 [7.2]	216 [4.4]	6 [1.4]
中部圏	専属専任 [構成比]	556 [7.5]	178 [10.6]	143 [5.0]	191 [7.6]	40 [11.1]	4 [28.6]
	専任媒介 [構成比]	2,592 [35.0]	734 [43.7]	712 [25.1]	1,016 [40.5]	126 [35.0]	4 [28.6]
	一般媒介 [構成比]	1,973 [26.7]	403 [24.0]	588 [20.7]	822 [32.8]	157 [43.6]	3 [21.4]
	売主 [構成比]	2,228 [30.1]	357 [21.3]	1,367 [48.2]	470 [18.7]	32 [8.9]	2 [14.3]
	代理 [構成比]	49 [0.7]	7 [0.4]	28 [1.0]	8 [0.3]	5 [1.4]	1 [7.1]
	合計 [地域比]	7,398 [7.7]	1,679 [4.8]	2,838 [9.2]	2,507 [10.3]	360 [7.3]	14 [3.2]
近畿圏	専属専任 [構成比]	2,684 [17.3]	850 [15.1]	1,147 [19.5]	576 [17.5]	104 [17.8]	7 [9.2]
	専任媒介 [構成比]	5,309 [34.3]	2,319 [41.1]	1,651 [28.0]	1,110 [33.6]	190 [32.6]	39 [51.3]
	一般媒介 [構成比]	3,899 [25.2]	1,409 [25.0]	1,429 [24.3]	829 [25.1]	215 [36.9]	17 [22.4]
	売主 [構成比]	3,363 [21.7]	983 [17.4]	1,560 [26.5]	747 [22.6]	64 [11.0]	9 [11.8]
	代理 [構成比]	233 [1.5]	81 [1.4]	101 [1.7]	37 [1.1]	10 [1.7]	4 [5.3]
	合計 [地域比]	15,488 [16.2]	5,642 [16.2]	5,888 [19.1]	3,299 [13.5]	583 [11.8]	76 [17.6]
中国	専属専任 [構成比]	190 [5.8]	23 [4.8]	67 [5.6]	85 [5.8]	15 [10.8]	0 [0.0]
	専任媒介 [構成比]	1,677 [50.8]	288 [60.1]	606 [50.4]	716 [48.6]	64 [46.0]	3 [42.9]
	一般媒介 [構成比]	960 [29.1]	110 [23.0]	311 [25.9]	490 [33.2]	46 [33.1]	3 [42.9]
	売主 [構成比]	456 [13.8]	54 [11.3]	216 [18.0]	174 [11.8]	11 [7.9]	1 [14.3]
	代理 [構成比]	19 [0.6]	4 [0.8]	3 [0.2]	9 [0.6]	3 [2.2]	0 [0.0]
	合計 [地域比]	3,302 [3.5]	479 [1.4]	1,203 [3.9]	1,474 [6.0]	139 [2.8]	7 [1.6]
四国	専属専任 [構成比]	253 [13.4]	8 [5.3]	60 [13.5]	165 [14.0]	20 [19.2]	0 [0.0]
	専任媒介 [構成比]	766 [40.7]	62 [41.3]	137 [30.7]	529 [44.8]	38 [36.5]	0 [0.0]
	一般媒介 [構成比]	622 [33.0]	64 [42.7]	139 [31.2]	380 [32.2]	38 [36.5]	1 [100.0]
	売主 [構成比]	231 [12.3]	16 [10.7]	109 [24.4]	102 [8.6]	4 [3.8]	0 [0.0]
	代理 [構成比]	10 [0.5]	0 [0.0]	1 [0.2]	5 [0.4]	4 [3.8]	0 [0.0]
	合計 [地域比]	1,882 [2.0]	150 [0.4]	446 [1.4]	1,181 [4.8]	104 [2.1]	1 [0.2]
九州	専属専任 [構成比]	599 [8.1]	198 [9.7]	156 [5.6]	174 [7.9]	70 [19.7]	1 [7.1]
	専任媒介 [構成比]	2,778 [37.5]	871 [42.7]	845 [30.4]	950 [43.0]	107 [30.1]	5 [35.7]
	一般媒介 [構成比]	2,542 [34.3]	684 [33.5]	1,004 [36.1]	687 [31.1]	159 [44.7]	8 [57.1]
	売主 [構成比]	1,417 [19.1]	278 [13.6]	751 [27.0]	378 [17.1]	10 [2.8]	0 [0.0]
	代理 [構成比]	67 [0.9]	8 [0.4]	28 [1.0]	21 [1.0]	10 [2.8]	0 [0.0]
	合計 [地域比]	7,403 [7.8]	2,039 [5.8]	2,784 [9.0]	2,210 [9.1]	356 [7.2]	14 [3.2]
全国	専属専任 [構成比]	9,855 [10.3]	4,004 [11.5]	2,693 [8.7]	2,448 [10.0]	675 [13.7]	35 [8.1]
	専任媒介 [構成比]	32,856 [34.4]	11,570 [33.1]	9,732 [31.6]	9,834 [40.3]	1,577 [32.0]	143 [33.0]
	一般媒介 [構成比]	20,563 [21.5]	6,392 [18.3]	5,768 [18.7]	6,364 [26.1]	1,914 [38.8]	125 [28.9]
	売主 [構成比]	30,792 [32.2]	12,328 [35.3]	12,284 [39.8]	5,471 [22.4]	591 [12.0]	118 [27.3]
	代理 [構成比]	1,453 [1.5]	612 [1.8]	369 [1.2]	288 [1.2]	172 [3.5]	12 [2.8]
	合計	95,519	34,906	30,846	24,405	4,929	433

※構成比とは地域内の取引態様別構成比で、地域比とは全国合計の地域別シェアである。

※構成比・地域比は、四捨五入による端数処理のため内数の合計が100%にならないことがある。

指定流通機構実態調査集計、総括表 月間成約件数

		総 数	物 件 種 別				
			マンション	一 戸 建	土 地	住宅外全部	住宅外一部
全	総計件数	41,795	30,094	5,925	3,126	692	1,958
	[前月比]	[-3.9]	[-4.1]	[-4.9]	[4.3]	[-2.9]	[-9.9]
売	総 計	13,916	5,543	4,895	3,040	397	41
	[前月比]	[-0.7]	[-1.6]	[-3.4]	[4.4]	[8.2]	[7.9]
り	北海道	718	182	263	239	34	0
	[前月比]	[-2.3]	[-1.6]	[-11.7]	[11.2]	[-8.1]	[-]
地	東北	611	129	253	200	29	0
	[前月比]	[5.3]	[7.5]	[-4.5]	[16.3]	[38.1]	[-100.0]
域	関東甲信越	574	83	270	196	24	1
	[前月比]	[7.5]	[1.2]	[1.5]	[14.0]	[71.4]	[-]
物	首都圏	5,182	2,849	1,380	789	146	18
	[前月比]	[1.9]	[1.4]	[-0.6]	[6.6]	[19.7]	[-18.2]
別	中部4県	456	94	201	150	10	1
	[前月比]	[-6.7]	[-6.0]	[-13.4]	[5.6]	[-23.1]	[-50.0]
件	中部圏	1,215	372	428	381	31	3
	[前月比]	[0.5]	[-1.3]	[-0.7]	[7.6]	[-27.9]	[-25.0]
態	近畿圏	3,315	1,316	1,347	573	66	13
	[前月比]	[-5.7]	[-3.8]	[-6.5]	[-8.8]	[-8.3]	[85.7]
様	中国	595	130	266	181	17	1
	[前月比]	[9.2]	[-19.3]	[18.2]	[29.3]	[-10.5]	[-]
別	四国	180	41	86	49	4	0
	[前月比]	[-9.5]	[-30.5]	[4.9]	[-14.0]	[300.0]	[-]
引	九州	1,070	347	401	282	36	4
	[前月比]	[-5.1]	[-6.5]	[-8.7]	[-3.4]	[44.0]	[300.0]
専	専属専任	2,396	1,152	712	457	73	2
	[前月比]	[0.1]	[3.8]	[-3.0]	[-4.4]	[10.6]	[-66.7]
態	専任媒介	7,662	3,361	2,326	1,738	220	17
	[前月比]	[0.0]	[-1.8]	[-3.7]	[7.7]	[12.8]	[13.3]
別	一般媒介	1,668	552	560	464	85	7
	[前月比]	[1.1]	[3.2]	[-0.9]	[1.1]	[0.0]	[16.7]
売	売主	2,115	464	1,260	360	17	14
	[前月比]	[-5.5]	[-14.4]	[-4.5]	[3.2]	[0.0]	[27.3]
代	代理	75	14	37	21	2	1
	[前月比]	[2.7]	[-41.7]	[12.1]	[75.0]	[-50.0]	[-]
賃	総 計	27,879	24,551	1,030	86	295	1,917
	[前月比]	[-5.4]	[-4.6]	[-11.5]	[2.4]	[-14.7]	[-10.2]
賃	北海道	89	75	4	2	4	4
	[前月比]	[-23.3]	[-22.7]	[-42.9]	[-60.0]	[300.0]	[-33.3]
地	東北	297	241	22	1	5	28
	[前月比]	[-2.6]	[1.3]	[-31.3]	[-75.0]	[-]	[-9.7]
域	関東甲信越	367	259	53	1	9	45
	[前月比]	[4.3]	[5.7]	[26.2]	[-75.0]	[28.6]	[-16.7]
物	首都圏	14,827	13,246	370	36	81	1,094
	[前月比]	[-4.6]	[-4.1]	[-6.6]	[2.9]	[-33.1]	[-8.1]
件	中部4県	209	136	16	1	21	35
	[前月比]	[-15.7]	[-8.1]	[-42.9]	[-50.0]	[23.5]	[-34.0]
別	中部圏	361	323	12	2	6	18
	[前月比]	[-13.8]	[-12.0]	[-29.4]	[-50.0]	[-14.3]	[-25.0]
態	近畿圏	10,091	8,948	448	25	140	530
	[前月比]	[-5.9]	[-5.0]	[-13.8]	[31.6]	[-4.1]	[-15.1]
様	中国	228	147	26	6	10	39
	[前月比]	[-11.3]	[-7.0]	[-33.3]	[500.0]	[-23.1]	[-15.2]
別	四国	69	43	15	1	4	6
	[前月比]	[-37.8]	[-50.0]	[36.4]	[0.0]	[0.0]	[-33.3]
引	九州	1,341	1,133	64	11	15	118
	[前月比]	[-3.4]	[-4.0]	[-11.1]	[22.2]	[-50.0]	[21.6]

* 成約件数は成約報告のあった件数である。

指定流通機構実態調査集計、総括表 当月末総登録件数

		総 数	物 件 種 別					
			マンション	一 戸 建	土 地	住宅外全部	住宅外一部	
全	総計件数	872,241	526,310	118,001	130,719	26,989	70,222	
	[前月比]	[-1.2]	[-2.2]	[1.7]	[0.3]	[-0.6]	[-1.4]	
売	総 計	330,675	81,222	103,151	126,698	18,209	1,395	
	[前月比]	[1.0]	[1.3]	[2.0]	[0.3]	[-0.8]	[-2.2]	
り	北海道	13,294	2,232	3,692	6,308	1,041	21	
	[前月比]	[-0.4]	[-0.1]	[0.8]	[-1.3]	[0.1]	[-4.5]	
	東北	15,660	1,680	5,494	7,615	828	43	
	[前月比]	[1.7]	[-1.9]	[2.8]	[2.2]	[-2.7]	[-8.5]	
	関東甲信越	29,533	1,677	8,715	17,664	1,423	54	
	[前月比]	[-0.1]	[4.0]	[2.7]	[-1.7]	[-0.2]	[-3.6]	
	首都圏	100,817	41,869	29,781	22,002	6,442	723	
	[前月比]	[1.3]	[1.1]	[2.0]	[1.0]	[-0.1]	[-1.4]	
	中部4県	20,428	1,614	6,103	11,581	1,088	42	
	[前月比]	[0.9]	[3.0]	[2.2]	[0.1]	[-0.5]	[-14.3]	
	中部圏	32,020	5,490	9,988	14,974	1,515	53	
	[前月比]	[1.7]	[2.8]	[3.5]	[0.2]	[2.6]	[-11.7]	
	近畿圏	60,186	17,483	21,404	18,215	2,744	340	
	[前月比]	[0.2]	[1.5]	[0.0]	[-0.2]	[-3.0]	[2.1]	
	中国	17,362	1,474	5,613	9,495	756	24	
	[前月比]	[2.0]	[4.5]	[1.6]	[2.1]	[-2.2]	[14.3]	
物	四国	7,688	658	2,023	4,577	419	11	
	[前月比]	[1.3]	[-0.8]	[1.9]	[1.3]	[1.9]	[-8.3]	
	九州	33,687	7,045	10,338	14,267	1,953	84	
	[前月比]	[1.6]	[0.8]	[4.6]	[0.6]	[-2.5]	[-9.7]	
	取	専属専任	35,677	10,813	10,377	12,300	2,076	111
	[前月比]	[-0.5]	[0.5]	[-0.5]	[-1.1]	[-1.3]	[-0.9]	
件	態	専任媒介	125,058	34,189	35,487	48,641	6,200	541
	[前月比]	[0.5]	[1.1]	[0.7]	[0.2]	[-0.9]	[0.6]	
	様	一般媒介	96,726	19,864	22,871	45,652	7,860	479
	[前月比]	[1.0]	[2.2]	[2.1]	[0.2]	[0.2]	[-2.6]	
	別	売主	68,684	15,412	32,760	18,708	1,580	224
	[前月比]	[2.8]	[1.7]	[4.5]	[1.8]	[-4.8]	[-4.7]	
	代理	4,530	944	1,656	1,397	493	40	
[前月比]	[-1.8]	[-4.2]	[-2.1]	[-0.1]	[1.2]	[-18.4]		
賃	総 計	541,566	445,088	14,850	4,021	8,780	68,827	
	[前月比]	[-2.5]	[-2.8]	[-0.2]	[0.4]	[-0.1]	[-1.4]	
賃	北海道	3,985	3,511	100	48	59	267	
	[前月比]	[-5.6]	[-5.9]	[-4.8]	[-2.0]	[1.7]	[-3.3]	
	東北	10,544	8,742	331	133	161	1,177	
	[前月比]	[1.3]	[0.9]	[7.1]	[4.7]	[0.6]	[2.4]	
	関東甲信越	15,827	12,560	672	343	413	1,839	
	[前月比]	[-1.0]	[-0.8]	[4.5]	[3.6]	[1.7]	[-5.8]	
	首都圏	356,616	304,257	5,614	1,160	3,234	42,351	
	[前月比]	[-3.5]	[-3.9]	[0.7]	[-0.1]	[-3.3]	[-1.2]	
	中部4県	8,152	5,255	520	206	568	1,603	
	[前月比]	[0.0]	[0.9]	[3.8]	[3.5]	[0.4]	[-4.8]	
	中部圏	7,951	5,334	266	460	339	1,552	
	[前月比]	[3.8]	[5.2]	[0.0]	[6.2]	[5.3]	[-1.0]	
	近畿圏	107,267	83,955	5,104	872	2,898	14,438	
	[前月比]	[-0.4]	[-0.3]	[-1.4]	[-0.5]	[2.7]	[-0.7]	
	中国	8,807	5,457	954	234	350	1,812	
	[前月比]	[-2.8]	[-3.6]	[-4.5]	[-1.3]	[2.6]	[-0.7]	
物	四国	2,402	1,414	259	88	137	504	
	[前月比]	[-1.7]	[-1.8]	[-2.6]	[-3.3]	[-1.4]	[-0.6]	
	九州	20,015	14,603	1,030	477	621	3,284	
[前月比]	[-1.6]	[-1.1]	[-1.3]	[-5.0]	[-1.9]	[-3.7]		