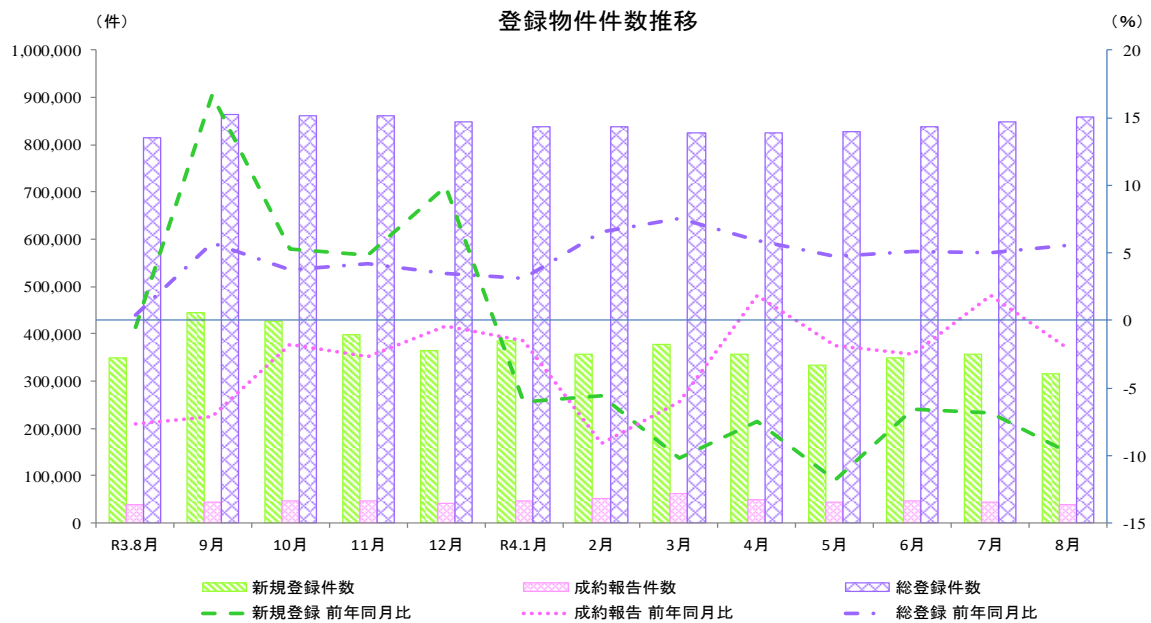


指定流通機構の活用状況について（令和4年8月分）

1. 概況

令和4年8月の指定流通機構の活用状況をみると、新規登録件数は315,145件と前年同月比で8ヶ月連続してマイナスとなり、前月比では3ヶ月ぶりにマイナスに転じた。成約報告件数は38,046件と前年同月比でふたたびマイナスに転じ、前月比では2ヶ月連続してマイナスとなった。総登録件数は859,585件と前年同月比で13ヶ月連続してプラスとなり、前月比では4ヶ月連続してプラスとなった。



物件件数の推移

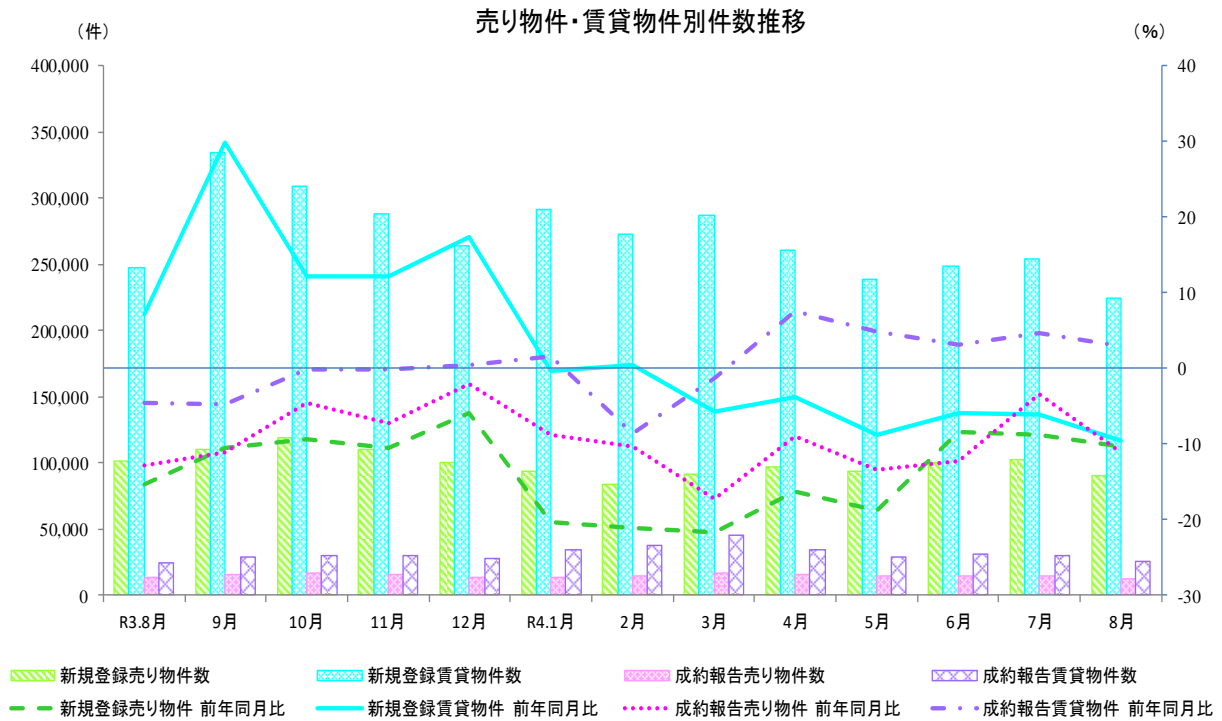
	R3.8月	9月	10月	11月	12月	R4.1月	2月	3月	4月	5月	6月	7月	8月
新規登録件数(件)	349,286	445,036	427,604	398,228	365,158	385,517	357,213	378,723	357,811	332,763	349,131	356,111	315,145
前年同月比(%)	▲0.5	16.7	5.3	4.8	9.9	▲6.0	▲5.6	▲10.2	▲7.5	▲11.8	▲6.6	▲6.9	▲9.8
前月比(%)	▲8.6	27.4	▲3.9	▲6.9	▲8.3	5.6	▲7.3	6.0	▲5.5	▲7.0	4.9	2.0	▲11.5
成約報告件数(件)	38,827	44,537	46,857	45,451	41,400	47,718	52,704	62,418	49,822	43,635	45,930	45,054	38,046
前年同月比(%)	▲7.7	▲7.1	▲1.7	▲2.7	▲0.4	▲1.5	▲9.1	▲6.1	1.9	▲1.9	▲2.5	1.9	▲2.0
前月比(%)	▲12.2	14.7	5.2	▲3.0	▲8.9	15.3	10.4	18.4	▲20.2	▲12.4	5.3	▲1.9	▲15.6
総登録件数(件)	814,480	863,991	861,322	862,294	849,180	838,799	838,038	825,903	823,907	827,328	836,832	849,660	859,585
前年同月比(%)	0.3	5.7	3.7	4.2	3.5	3.1	6.5	7.6	5.9	4.7	5.1	5.0	5.5
前月比(%)	0.7	6.1	▲0.3	0.1	▲1.5	▲1.2	▲0.1	▲1.4	▲0.2	0.4	1.1	1.5	1.2

※ 公益社団法人西日本不動産流通機構より、中国、四国、九州の平成31年4月から令和3年12月まで（以下「対象期間」といいます。）の新規登録件数について確認を行っているとの連絡を受けております。対象期間のこれらの地域及び全国合計の新規登録件数、並びにこの件数を用いて算出されている前年比の数値のご利用に当たってはご注意ください。

2. 売り・賃貸別物件数

令和4年8月の売り物件数をみると、新規登録件数は90,777件と前年同月比で29ヶ月連続してマイナスとなり、前月比では3ヶ月ぶりにマイナスに転じた。成約報告件数は12,182件と前年同月比で14ヶ月連続してマイナスとなり、前月比では3ヶ月ぶりにマイナスに転じた。総登録件数は307,300件と前年同月比で3ヶ月連続してプラスとなり、前月比では4ヶ月連続してプラスとなった。

令和4年8月の賃貸物件数をみると、新規登録件数は224,368件と前年同月比で6ヶ月連続してマイナスとなり、前月比では3ヶ月ぶりにマイナスに転じた。成約報告件数は25,864件と前年同月比で5ヶ月連続してプラスとなり、前月比では2ヶ月連続してマイナスとなった。総登録件数は552,285件と前年同月比で27ヶ月連続してプラスとなり、前月比では5ヶ月連続してプラスとなった。



R4年8月 売り物件・賃貸物件別件数

新規登録件数	315,145 件	前年同月比 ▲9.8 %	👉	前月比 ▲11.5 %	👇
売り物件	90,777 件	前年同月比 ▲10.3 %	👇	前月比 ▲11.2 %	👇
賃貸物件	224,368 件	前年同月比 ▲9.6 %	👉	前月比 ▲11.6 %	👇
成約報告件数	38,046 件	前年同月比 ▲2.0 %	👉	前月比 ▲15.6 %	👇
売り物件	12,182 件	前年同月比 ▲11.1 %	👇	前月比 ▲19.7 %	👇
賃貸物件	25,864 件	前年同月比 2.9 %	👉	前月比 ▲13.5 %	👇
総登録件数	859,585 件	前年同月比 5.5 %	👉	前月比 1.2 %	👉
売り物件	307,300 件	前年同月比 6.8 %	👉	前月比 1.2 %	👉
賃貸物件	552,285 件	前年同月比 4.9 %	👉	前月比 1.14 %	👉

凡例: 📈 10% ~ 📊 3% ~ 10% 📉 -3% ~ 3% 📉 -10% ~ -3% 📉 ~ -10%

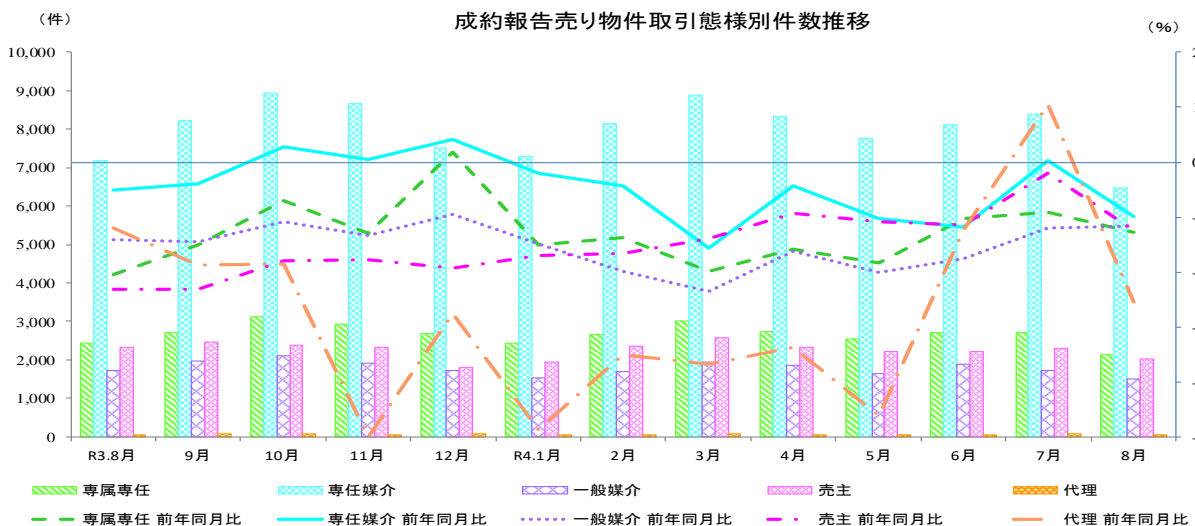
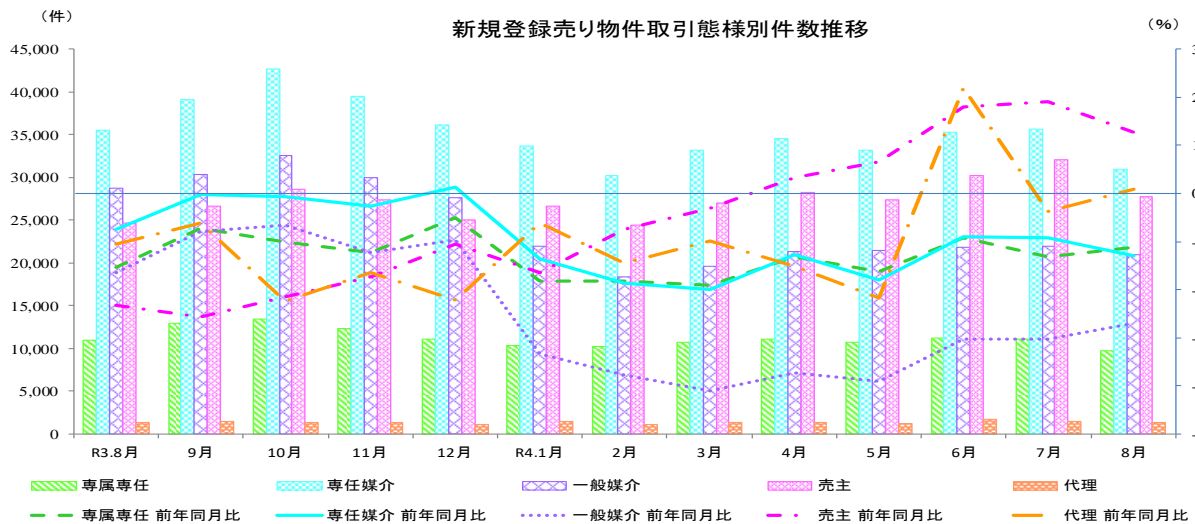
3. 売り物件の取引態様別物件数

令和4年8月の新規登録売り物件の取引態様別をみると、専任媒介は34.1%を占め、次いで売主は30.6%を占めている。成約報告売り物件の取引態様別をみると、専任媒介は53.2%を占め、次いで専属専任は17.4%を占めている。

R4年8月 売り物件の取引態様別物件数

	取引態様	件数	構成比	前年同月比	前月比
新規登録件数	媒介契約	61,617 件	67.9 %	▲ 18.1 %	▲ 10.3 %
	専属専任	9,699 件	10.7 %	▲ 11.2 %	▲ 12.9 %
	専任媒介	30,919 件	34.1 %	▲ 12.9 %	▲ 13.3 %
	一般媒介	20,999 件	23.1 %	▲ 27.1 %	▲ 4.1 %
	売主	27,788 件	30.6 %	12.8 %	▲ 13.3 %
	代理	1,372 件	1.5 %	1.0 %	▲ 7.5 %
成約報告件数	媒介契約	10,111 件	83.0 %	▲ 10.7 %	▲ 21.1 %
	専属専任	2,123 件	17.4 %	▲ 12.7 %	▲ 21.3 %
	専任媒介	6,477 件	53.2 %	▲ 9.8 %	▲ 22.7 %
	一般媒介	1,511 件	12.4 %	▲ 11.7 %	▲ 12.8 %
	売主	2,027 件	16.6 %	▲ 12.5 %	▲ 11.4 %
	代理	44 件	0.4 %	▲ 25.4 %	▲ 30.2 %

凡例: ▲ 10% ~ ▲ 3% ~ 10% ➡ -3% ~ 3% ▼ -10% ~ -3% ▼ ~ -10%



指定流通機構実態調査集計、総括表 新規登録件数

		総数	物件種別					
			マンション	一戸建	土地	住宅外全部	住宅外一部	
全	総計件数 [前月比]	315,145 [-11.5]	227,829 [-12.5]	35,493 [-10.9]	25,129 [-8.6]	7,083 [-9.6]	19,611 [-4.0]	
売 地	総計 [前月比]	90,777 [-11.2]	31,683 [-13.4]	29,395 [-11.4]	24,463 [-8.1]	4,748 [-11.2]	488 [-9.1]	
	北海道 [前月比]	3,248 [-11.7]	852 [-18.9]	871 [-12.1]	1,246 [-7.9]	272 [-2.5]	7 133.3]	
	東北 [前月比]	3,627 [-5.8]	562 [-23.6]	1,427 [-4.4]	1,422 3.4]	205 [-14.2]	11 37.5]	
	関東甲信越 [前月比]	6,502 [-3.4]	473 [-5.8]	2,725 [-2.7]	2,937 [-4.0]	355 [-1.7]	12 50.0]	
	首都圏 [前月比]	39,149 [-15.1]	19,951 [-13.9]	10,679 [-15.0]	6,155 [-18.2]	2,051 [-16.2]	313 [-14.2]	
	中部4県 [前月比]	3,947 [-0.5]	411 [-19.1]	1,303 [-5.5]	1,983 9.5]	239 [-7.0]	11 -8.3]	
	中部圏 [前月比]	7,044 [-9.3]	1,574 [-8.2]	2,682 [-7.8]	2,467 [-10.7]	310 [-14.6]	11 -21.4]	
	近畿圏 [前月比]	14,750 [-16.2]	5,151 [-14.3]	5,601 [-15.1]	3,258 [-21.5]	636 [-13.7]	104 3.0]	
	中国 [前月比]	3,207 [-12.5]	434 [-8.4]	1,161 [-19.0]	1,465 [-8.8]	146 [-2.0]	1 -75.0]	
	四国 [前月比]	1,650 28.6]	140 [-23.9]	398 [-15.5]	1,019 85.6]	92 24.3]	1 -80.0]	
	九州 [前月比]	7,653 0.5]	2,135 [-3.1]	2,548 0.6]	2,511 3.8]	442 0.0]	17 0.0]	
	取 引 態 様 別	専属専任 [前月比]	9,699 [-12.9]	3,594 [-15.3]	2,761 [-12.5]	2,661 [-9.4]	628 [-14.1]	55 [-15.4]
		専任媒介 [前月比]	30,919 [-13.3]	10,456 [-16.2]	9,152 [-14.2]	9,644 [-8.8]	1,510 [-13.6]	157 [-21.1]
		一般媒介 [前月比]	20,999 [-4.1]	5,849 [-9.7]	6,132 [-5.5]	7,072 2.4]	1,814 [-5.4]	132 12.8]
		売主 [前月比]	27,788 [-13.3]	11,085 [-12.4]	11,160 [-11.6]	4,807 [-18.7]	604 [-18.0]	132 5.6]
		代理 [前月比]	1,372 [-7.5]	699 [-1.4]	190 [-23.1]	279 [-0.7]	192 [-10.7]	12 -61.3]
		総計 [前月比]	224,368 [-11.6]	196,146 [-12.4]	6,098 [-8.7]	666 [-23.6]	2,335 [-6.3]	19,123 [-3.9]
賃 地	北海道 [前月比]	1,741 [-25.2]	1,654 [-25.8]	28 133.3]	5 [-77.3]	12 0.0]	42 -20.8]	
	東北 [前月比]	4,698 [-21.2]	4,263 [-22.6]	108 6.9]	27 0.0]	32 -36.0]	268 -3.2]	
	関東甲信越 [前月比]	7,306 [-27.7]	6,501 [-29.3]	215 [-15.4]	33 [-51.5]	91 13.8]	466 -8.8]	
	首都圏 [前月比]	159,875 [-11.4]	143,146 [-11.9]	2,912 [-11.5]	226 [-10.7]	969 [-16.8]	12,622 -3.8]	
	中部4県 [前月比]	2,600 7.6]	1,682 4.1]	219 17.1]	37 -30.2]	158 45.0]	504 11.3]	
	中部圏 [前月比]	2,751 [-11.3]	1,967 [-18.5]	123 7.9]	76 [-10.6]	146 92.1]	439 6.8]	
	近畿圏 [前月比]	34,873 [-8.6]	28,935 [-9.1]	1,672 [-9.3]	137 [-29.7]	689 -6.0]	3,440 -2.9]	
	中国 [前月比]	2,845 [-19.9]	1,861 [-17.7]	346 [-11.1]	28 [-55.6]	79 -12.2]	531 -29.3]	
	四国 [前月比]	644 [-7.3]	396 [-21.3]	85 49.1]	34 142.9]	29 52.6]	100 -2.0]	
	九州 [前月比]	7,035 -2.3]	5,741 [-1.7]	390 -9.9]	63 -31.5]	130 -17.7]	711 5.0]	

* 前月比欄の数値は、対前月増減率である。

* 「関東甲信越」は、茨城県・栃木県・群馬県・新潟県・山梨県・長野県、「首都圏」は、東京都・千葉県・埼玉県・神奈川県、「中部圏」は、愛知県・岐阜県・三重県、「中部4県」は、富山県・石川県・福井県・静岡県、「近畿圏」は、大阪府・京都府・兵庫県・滋賀県・奈良県・和歌山県をいう。

指定流通機構実態調査 売り物件・新規登録件数 時系列表

	3年8月	3年9月	3年10月	3年11月	3年12月	4年1月	4年2月	4年3月	4年4月	4年5月	4年6月	4年7月	4年8月	一年間計
	件数	件数	件数	件数	件数	件数	件数	件数	件数	件数	件数	件数	件数	件数
	(前月比)	(前月比)	(前月比)	(前月比)	(前月比)	(前月比)	(前月比)	(前月比)	(前月比)	(前月比)	(前月比)	(前月比)	(前月比)	(前月比)
	(前年比)	(前年比)	(前年比)	(前年比)	(前年比)	(前年比)	(前年比)	(前年比)	(前年比)	(前年比)	(前年比)	(前年比)	(前年比)	(構成比)
総数	101,222	110,620	118,643	110,297	100,913	94,030	84,288	91,889	96,632	93,871	100,117	102,239	90,777	1,194,316
	(-9.7)	(9.3)	(7.3)	(-7.0)	(-8.5)	(-6.8)	(-10.4)	(9.0)	(5.2)	(-2.9)	(6.7)	(2.1)	(-11.2)	
	[-15.2]	[-10.6]	[-9.4]	[-10.5]	[-5.9]	[-20.3]	[-21.0]	[-21.7]	[-16.3]	[-18.7]	[-8.5]	[-8.8]	[-10.3]	
北海道	2,229	2,625	2,809	2,513	2,271	2,124	2,096	2,426	2,779	3,040	3,695	3,677	3,248	33,303
	(-17.2)	(17.8)	(7.0)	(-10.5)	(-9.6)	(-6.5)	(-1.3)	(15.7)	(14.6)	(9.4)	(21.5)	(-0.5)	(-11.7)	(2.8)
	[-1.3]	[0.4]	[1.5]	[1.3]	[14.5]	[-4.1]	[6.4]	[7.0]	[14.3]	[28.8]	[56.7]	[36.5]	[45.7]	
東北	2,734	3,154	3,394	3,037	2,804	2,906	2,687	2,864	3,498	3,494	3,728	3,850	3,627	39,043
	(-8.8)	(15.4)	(7.6)	(-10.5)	(-7.7)	(3.6)	(-7.5)	(6.6)	(22.1)	(-0.1)	(6.7)	(3.3)	(-5.8)	(3.3)
	[-12.2]	[-9.1]	[-11.2]	[-13.0]	[-16.4]	[-24.2]	[-2.2]	[-9.7]	[9.9]	[22.2]	[22.4]	[28.4]	[32.7]	
関東甲信越	4,169	4,279	5,068	4,529	4,052	5,034	4,294	5,167	5,676	5,889	6,788	6,733	6,502	64,011
	(-14.7)	(2.6)	(18.4)	(-10.6)	(-10.5)	(24.2)	(-14.7)	(20.3)	(9.9)	(3.8)	(15.3)	(-0.8)	(-3.4)	(5.4)
	[-5.3]	[-28.2]	[-9.8]	[-10.7]	[0.8]	[-4.8]	[1.3]	[10.4]	[22.2]	[22.6]	[37.7]	[37.7]	[56.0]	
首都圏	32,003	36,294	39,851	37,450	33,328	37,049	37,596	40,743	43,251	40,643	45,127	46,087	39,149	476,568
	(-13.7)	(13.4)	(9.8)	(-6.0)	(-11.0)	(11.2)	(1.5)	(8.4)	(6.2)	(-6.0)	(11.0)	(2.1)	(-15.1)	(39.9)
	[-17.8]	[-17.5]	[-14.9]	[-11.9]	[-1.5]	[-3.3]	[4.7]	[7.1]	[13.9]	[17.3]	[30.0]	[24.3]	[22.3]	
別中部4県	3,738	4,044	4,013	3,738	3,145	3,836	3,133	3,771	4,151	4,086	4,068	3,967	3,947	45,899
	(-1.7)	(8.2)	(-0.8)	(-6.9)	(-15.9)	(22.0)	(-18.3)	(20.4)	(10.1)	(-1.6)	(-0.4)	(-2.5)	(-0.5)	(3.8)
	[11.7]	[-1.1]	[-7.7]	[-8.1]	[-11.8]	[-20.4]	[-16.5]	[-15.2]	[-28.6]	[-43.3]	[-15.8]	[4.3]	[5.6]	
内中部圏	6,085	6,836	7,029	6,686	5,943	7,190	6,741	7,354	7,652	7,108	7,532	7,764	7,044	84,879
	(-7.8)	(12.3)	(2.8)	(-4.9)	(-11.1)	(21.0)	(-6.2)	(9.1)	(4.1)	(-7.1)	(6.0)	(3.1)	(-9.3)	(7.1)
	[-12.7]	[-11.2]	[-9.7]	[-9.3]	[-7.7]	[-4.4]	[6.1]	[2.6]	[5.6]	[0.3]	[11.8]	[17.7]	[15.8]	
近畿圏	16,485	18,691	19,961	17,554	16,311	17,301	15,742	17,115	16,728	16,032	16,429	17,598	14,750	204,212
	(-11.5)	(13.4)	(6.8)	(-12.1)	(-7.1)	(6.1)	(-9.0)	(8.7)	(-2.3)	(-4.2)	(2.5)	(7.1)	(-16.2)	(17.1)
	[-15.2]	[-10.4]	[-8.5]	[-10.5]	[-9.5]	[-11.0]	[-16.1]	[-15.4]	[-11.0]	[-12.2]	[-9.3]	[-5.5]	[-10.5]	
中国	6,356	6,594	7,863	7,003	6,855	3,613	2,940	3,383	3,985	4,080	4,003	3,667	3,207	57,193
	(-8.8)	(3.7)	(19.2)	(-10.9)	(-2.1)	(-47.3)	(-18.6)	(15.1)	(17.8)	(2.4)	(-1.9)	(-8.4)	(-12.5)	(4.8)
	[-13.1]	[-0.2]	[2.0]	[4.4]	[1.8]	[-49.4]	[-54.2]	[-58.1]	[-41.0]	[-44.2]	[-41.6]	[-47.4]	[-49.5]	
四国	4,185	3,780	3,892	4,380	3,485	4,361	1,726	1,358	1,192	1,946	1,282	1,283	1,650	30,315
	(8.0)	(-9.7)	(3.0)	(12.5)	(-20.4)	(25.1)	(-60.4)	(-21.3)	(-12.2)	(63.3)	(-35.1)	(1.7)	(28.6)	(2.5)
	[-18.1]	[-1.1]	[-3.6]	[0.2]	[-5.0]	[21.9]	[-57.0]	[-65.3]	[-71.0]	[-62.5]	[-68.0]	[-66.9]	[-60.6]	
九州	23,238	24,323	24,763	23,407	22,719	10,616	7,333	7,708	7,720	7,553	7,485	7,613	7,653	158,893
	(-5.3)	(4.7)	(1.8)	(-5.5)	(-2.9)	(-53.3)	(-30.9)	(5.1)	(0.2)	(-2.2)	(-0.9)	(1.7)	(0.5)	(13.3)
	[-18.6]	[-1.1]	[-5.6]	[-15.3]	[-11.2]	[-58.9]	[-67.5]	[-69.6]	[-68.4]	[-70.7]	[-68.9]	[-69.0]	[-67.1]	
取	10,920	12,949	13,414	12,259	11,028	10,292	10,191	10,762	11,134	10,728	11,172	11,130	9,699	134,758
	(-14.9)	(18.6)	(3.6)	(-8.6)	(-10.0)	(-6.7)	(-1.0)	(5.6)	(3.5)	(-3.6)	(4.1)	(-0.4)	(-12.9)	(11.3)
	[-15.3]	[-7.3]	[-10.1]	[-12.3]	[-5.0]	[-18.1]	[-18.1]	[-19.2]	[-13.2]	[-16.2]	[-9.2]	[-13.3]	[-11.2]	
引	35,511	39,166	42,661	39,442	36,129	33,737	30,279	33,251	34,550	33,191	35,292	35,670	30,919	424,287
	(-9.7)	(10.3)	(8.9)	(-7.5)	(-8.4)	(-6.6)	(-10.2)	(9.8)	(3.9)	(-3.9)	(6.3)	(1.1)	(-13.3)	(35.5)
	[-7.6]	[-0.3]	[-0.6]	[-2.7]	[1.3]	[-13.5]	[-18.7]	[-19.9]	[-12.7]	[-17.9]	[-9.0]	[-9.3]	[-12.9]	
態	28,797	30,367	32,602	29,950	27,603	22,006	18,366	19,581	21,333	21,403	21,818	21,905	20,999	287,933
	(-8.4)	(5.5)	(7.4)	(-8.1)	(-7.8)	(-20.3)	(-16.5)	(6.6)	(8.9)	(0.3)	(1.9)	(0.4)	(-4.1)	(24.1)
	[-16.5]	[-7.9]	[-6.6]	[-12.3]	[-9.6]	[-33.4]	[-37.7]	[-41.1]	[-37.3]	[-39.1]	[-30.4]	[-30.3]	[-27.1]	
別	24,635	26,695	28,628	27,355	25,070	26,599	24,383	26,987	28,265	27,345	30,170	32,051	27,788	331,336
	(-8.5)	(8.4)	(7.2)	(-4.4)	(-8.4)	(6.1)	(-8.3)	(10.7)	(4.7)	(-3.3)	(10.3)	(6.2)	(-13.3)	(27.7)
	[-23.3]	[-25.7]	[-21.6]	[-17.3]	[-10.4]	[-16.4]	[-7.4]	[-3.2]	[3.2]	[6.7]	[17.9]	[19.0]	[12.8]	
代理	1,359	1,443	1,338	1,291	1,083	1,396	1,069	1,308	1,350	1,204	1,665	1,483	1,372	16,002
	(-11.8)	(6.2)	(-7.3)	(-3.5)	(-16.1)	(28.9)	(-23.4)	(22.4)	(3.2)	(-10.8)	(38.3)	(-10.9)	(-7.5)	(1.3)
	[-10.6]	[-6.2]	[-22.3]	[-16.4]	[-22.1]	[-6.2]	[-14.4]	[-9.8]	[-15.3]	[-21.8]	[21.9]	[-3.8]	[1.0]	
物	30,990	34,581	37,711	35,200	32,223	33,376	32,020	35,295	35,321	33,193	36,102	36,571	31,683	413,276
	(-11.3)	(11.6)	(9.1)	(-6.7)	(-8.5)	(3.6)	(-4.1)	(10.2)	(0.1)	(-6.0)	(8.8)	(1.3)	(-13.4)	(34.6)
	[-11.8]	[-11.1]	[-6.6]	[-6.0]	[-4.1]	[-6.9]	[-4.2]	[-1.7]	[2.1]	[-0.1]	[10.3]	[4.7]	[2.2]	
件	31,988	35,686	38,691	35,261	32,328	29,985	25,760	28,487	30,430	29,729	31,653	33,175	29,395	380,580
	(-11.0)	(11.6)	(8.4)	(-8.9)	(-8.3)	(-7.2)	(-14.1)	(10.6)	(6.8)	(-2.3)	(6.5)	(4.8)	(-11.4)	(31.9)
	[-17.1]	[-9.0]	[-7.5]	[-9.5]	[-4.5]	[-21.6]	[-24.3]	[-24.7]	[-19.6]	[-21.4]	[-12.0]	[-7.7]	[-8.1]	
種	32,424	34,272	35,524	33,796	30,942	25,142	21,558	22,541	25,222	25,562	26,476	26,608	24,463	332,106
	(-7.0)	(5.7)	(3.7)	(-4.9)	(-8.4)	(-18.7)	(-14.3)	(4.6)	(11.9)	(1.3)	(3.6)	(0.5)	(-8.1)	(27.8)
	[-18.3]	[-12.8]	[-15.6]	[-16.6]	[-9.4]	[-33.4]	[-35.8]	[-39.3]	[-31.1]	[-33.1]	[-22.9]	[-23.7]	[-24.6]	
別	5,424	5,559	6,149	5,447	4,934	4,954	4,463	5,004	5,151	4,901	5,414	5,348	4,748	62,072
	(-6.8)	(2.5)	(10.6)	(-11.4)	(-9.4)	(0.4)	(-9.9)	(12.1)	(2.9)	(-4.9)	(10.5)	(-1.2)	(-11.2)	(5.2)
	[-1.1]	[-3.4]	[0.8]	[-7.1]	[-4.7]	[-10.7]	[-14.2]	[-15.7]	[-10.7]	[-14.1]	[-6.6]	[-8.1]	[-12.5]	
住宅外(一部)	396	522	568	593	486	573	487	562	508	486	472	537	488	6,282
	(-24.1)	(31.8)	(8.8)	(4.4)	(-18.0)	(17.9)	(-15.0)	(15.4)	(-9.6)	(-4.3)	(-2.9)	(13.8)	(-9.1)	(0.5)
	[-21.4]	[2.8]	[1.2]	[13.0]	[8.2]	[-2.7]	[-6.2]	[-4.3]	[-10.4]	[-9.2]	[-14.8]	[2.9]	[23.2]	

※ 構成比は、四捨五入による端数処理のため内数の合計が100%にならないことがある

指定流通機構実態調査集計、総括表 地域別取引態様別売物件月間新規登録件数

地域	取引態様	総数	物件種別				
			マンション	一戸建	土地	住宅外全部	住宅外一部
北海道	専属専任 [構成比]	235 [7.2]	54 [6.3]	73 [8.4]	84 [6.7]	24 [8.8]	0 [0.0]
	専任媒介 [構成比]	1,641 [50.5]	319 [37.4]	513 [58.9]	659 [52.9]	145 [53.3]	5 [71.4]
	一般媒介 [構成比]	784 [24.1]	137 [16.1]	191 [21.9]	365 [29.3]	89 [32.7]	2 [28.6]
	売主 [構成比]	575 [17.7]	341 [40.0]	91 [10.4]	131 [10.5]	12 [4.4]	0 [0.0]
	代理 [構成比]	13 [0.4]	1 [0.1]	3 [0.3]	7 [0.6]	2 [0.7]	0 [0.0]
	合計 [地域比]	3,248 [3.6]	852 [2.7]	871 [3.0]	1,246 [5.1]	272 [5.7]	7 [1.4]
東北	専属専任 [構成比]	293 [8.1]	46 [8.2]	96 [6.7]	117 [8.2]	32 [15.6]	2 [18.2]
	専任媒介 [構成比]	1,321 [36.4]	243 [43.2]	512 [35.9]	517 [36.4]	47 [22.9]	2 [18.2]
	一般媒介 [構成比]	1,199 [33.1]	115 [20.5]	392 [27.5]	575 [40.4]	113 [55.1]	4 [36.4]
	売主 [構成比]	800 [22.1]	153 [27.2]	425 [29.8]	206 [14.5]	13 [6.3]	3 [27.3]
	代理 [構成比]	14 [0.4]	5 [0.9]	2 [0.1]	7 [0.5]	0 [0.0]	0 [0.0]
	合計 [地域比]	3,627 [4.0]	562 [1.8]	1,427 [4.9]	1,422 [5.8]	205 [4.3]	11 [2.3]
関東甲信越	専属専任 [構成比]	415 [6.4]	31 [6.6]	103 [3.8]	228 [7.8]	52 [14.6]	1 [8.3]
	専任媒介 [構成比]	2,150 [33.1]	214 [45.2]	736 [27.0]	1,085 [36.9]	107 [30.1]	8 [66.7]
	一般媒介 [構成比]	2,343 [36.0]	152 [32.1]	1,005 [36.9]	1,037 [35.3]	146 [41.1]	3 [25.0]
	売主 [構成比]	1,541 [23.7]	74 [15.6]	877 [32.2]	549 [18.7]	41 [11.5]	0 [0.0]
	代理 [構成比]	53 [0.8]	2 [0.4]	4 [0.1]	38 [1.3]	9 [2.5]	0 [0.0]
	合計 [地域比]	6,502 [7.2]	473 [1.5]	2,725 [9.3]	2,937 [12.0]	355 [7.5]	12 [2.5]
首都圏	専属専任 [構成比]	3,905 [10.0]	2,197 [11.0]	709 [6.6]	696 [11.3]	260 [12.7]	43 [13.7]
	専任媒介 [構成比]	11,892 [30.4]	5,576 [27.9]	3,275 [30.7]	2,328 [37.8]	624 [30.4]	89 [28.4]
	一般媒介 [構成比]	5,516 [14.1]	2,754 [13.8]	1,085 [10.2]	940 [15.3]	670 [32.7]	67 [21.4]
	売主 [構成比]	16,847 [43.0]	8,811 [44.2]	5,507 [51.6]	2,054 [33.4]	372 [18.1]	103 [32.9]
	代理 [構成比]	989 [2.5]	613 [3.1]	103 [1.0]	137 [2.2]	125 [6.1]	11 [3.5]
	合計 [地域比]	39,149 [43.1]	19,951 [63.0]	10,679 [36.3]	6,155 [25.2]	2,051 [43.2]	313 [64.1]
中部四県	専属専任 [構成比]	373 [9.5]	27 [6.6]	108 [8.3]	210 [10.6]	28 [11.7]	0 [0.0]
	専任媒介 [構成比]	1,384 [35.1]	200 [48.7]	398 [30.5]	703 [35.5]	77 [32.2]	6 [54.5]
	一般媒介 [構成比]	1,480 [37.5]	131 [31.9]	439 [33.7]	793 [40.0]	116 [48.5]	1 [9.1]
	売主 [構成比]	677 [17.2]	47 [11.4]	354 [27.2]	258 [13.0]	14 [5.9]	4 [36.4]
	代理 [構成比]	33 [0.8]	6 [1.5]	4 [0.3]	19 [1.0]	4 [1.7]	0 [0.0]
	合計 [地域比]	3,947 [4.3]	411 [1.3]	1,303 [4.4]	1,983 [8.1]	239 [5.0]	11 [2.3]
中部圏	専属専任 [構成比]	621 [8.8]	176 [11.2]	173 [6.5]	232 [9.4]	39 [12.6]	1 [9.1]
	専任媒介 [構成比]	2,365 [33.6]	657 [41.7]	612 [22.8]	991 [40.2]	98 [31.6]	7 [63.6]
	一般媒介 [構成比]	1,751 [24.9]	360 [22.9]	392 [14.6]	861 [34.9]	136 [43.9]	2 [18.2]
	売主 [構成比]	2,266 [32.2]	373 [23.7]	1,500 [55.9]	373 [15.1]	19 [6.1]	1 [9.1]
	代理 [構成比]	41 [0.6]	8 [0.5]	5 [0.2]	10 [0.4]	18 [5.8]	0 [0.0]
	合計 [地域比]	7,044 [7.8]	1,574 [5.0]	2,682 [9.1]	2,467 [10.1]	310 [6.5]	11 [2.3]
近畿圏	専属専任 [構成比]	2,767 [18.8]	834 [16.2]	1,208 [21.6]	618 [19.0]	102 [16.0]	5 [4.8]
	専任媒介 [構成比]	5,015 [34.0]	1,990 [38.6]	1,654 [29.5]	1,175 [36.1]	160 [25.2]	36 [34.6]
	一般媒介 [構成比]	3,649 [24.7]	1,356 [26.3]	1,209 [21.6]	785 [24.1]	256 [40.3]	43 [41.3]
	売主 [構成比]	3,142 [21.3]	914 [17.7]	1,472 [26.3]	643 [19.7]	94 [14.8]	19 [18.3]
	代理 [構成比]	177 [1.2]	57 [1.1]	58 [1.0]	37 [1.1]	24 [3.8]	1 [1.0]
	合計 [地域比]	14,750 [16.2]	5,151 [16.3]	5,601 [19.1]	3,258 [13.3]	636 [13.4]	104 [21.3]
中国	専属専任 [構成比]	239 [7.5]	30 [6.9]	97 [8.4]	101 [6.9]	11 [7.5]	0 [0.0]
	専任媒介 [構成比]	1,549 [48.3]	259 [59.7]	558 [48.1]	662 [45.2]	70 [47.9]	0 [0.0]
	一般媒介 [構成比]	941 [29.3]	94 [21.7]	294 [25.3]	494 [33.7]	58 [39.7]	1 [100.0]
	売主 [構成比]	463 [14.4]	50 [11.5]	207 [17.8]	200 [13.7]	6 [4.1]	0 [0.0]
	代理 [構成比]	15 [0.5]	1 [0.2]	5 [0.4]	8 [0.5]	1 [0.7]	0 [0.0]
	合計 [地域比]	3,207 [3.5]	434 [1.4]	1,161 [3.9]	1,465 [6.0]	146 [3.1]	1 [0.2]
四国	専属専任 [構成比]	209 [12.7]	6 [4.3]	45 [11.3]	144 [14.1]	14 [15.2]	0 [0.0]
	専任媒介 [構成比]	659 [39.9]	69 [49.3]	108 [27.1]	451 [44.3]	31 [33.7]	0 [0.0]
	一般媒介 [構成比]	590 [35.8]	45 [32.1]	147 [36.9]	357 [35.0]	40 [43.5]	1 [100.0]
	売主 [構成比]	185 [11.2]	20 [14.3]	98 [24.6]	64 [6.3]	3 [3.3]	0 [0.0]
	代理 [構成比]	7 [0.4]	0 [0.0]	0 [0.0]	3 [0.3]	4 [4.3]	0 [0.0]
	合計 [地域比]	1,650 [1.8]	140 [0.4]	398 [1.4]	1,019 [4.2]	92 [1.9]	1 [0.2]
九州	専属専任 [構成比]	642 [8.4]	193 [9.0]	149 [5.8]	231 [9.2]	66 [14.9]	3 [17.6]
	専任媒介 [構成比]	2,943 [38.5]	929 [43.5]	786 [30.8]	1,073 [42.7]	151 [34.2]	4 [23.5]
	一般媒介 [構成比]	2,746 [35.9]	705 [33.0]	978 [38.4]	865 [34.4]	190 [43.0]	8 [47.1]
	売主 [構成比]	1,292 [16.9]	302 [14.1]	629 [24.7]	329 [13.1]	30 [6.8]	2 [11.8]
	代理 [構成比]	30 [0.4]	6 [0.3]	6 [0.2]	13 [0.5]	5 [1.1]	0 [0.0]
	合計 [地域比]	7,653 [8.4]	2,135 [6.7]	2,548 [8.7]	2,511 [10.3]	442 [9.3]	17 [3.5]
全国	専属専任 [構成比]	9,699 [10.7]	3,594 [11.3]	2,761 [9.4]	2,661 [10.9]	628 [13.2]	55 [11.3]
	専任媒介 [構成比]	30,919 [34.1]	10,456 [33.0]	9,152 [31.1]	9,644 [39.4]	1,510 [31.8]	157 [32.2]
	一般媒介 [構成比]	20,999 [23.1]	5,849 [18.5]	6,132 [20.9]	7,072 [28.9]	1,814 [38.2]	132 [27.0]
	売主 [構成比]	27,788 [30.6]	11,085 [35.0]	11,160 [38.0]	4,807 [19.7]	604 [12.7]	132 [27.0]
	代理 [構成比]	1,372 [1.5]	699 [2.2]	190 [0.6]	279 [1.1]	192 [4.0]	12 [2.5]
	合計	90,777	31,683	29,395	24,463	4,748	488

※構成比とは地域内の取引態様別構成比で、地域比とは全国合計の地域別シェアである。

※構成比・地域比は、四捨五入による端数処理のため内数の合計が100%にならないことがある。

指定流通機構実態調査集計、総括表 月間成約件数

		総 数	物 件 種 別				
			マンション	一 戸 建	土 地	住宅外全部	住宅外一部
全	総計件数	38,046	27,210	5,437	2,813	621	1,965
	[前月比]	[-15.6]	[-15.8]	[-17.3]	[-15.4]	[-17.2]	[-6.0]
売	総 計	12,182	4,679	4,371	2,740	343	49
	[前月比]	[-19.7]	[-23.3]	[-18.4]	[-15.9]	[-18.1]	32.4
り	北海道	643	165	238	213	26	1
	[前月比]	[-24.7]	[-34.0]	[-25.4]	[-15.8]	[-18.8]	[-]
地	東北	539	116	234	157	31	1
	[前月比]	[-17.3]	[-23.2]	[-19.0]	[-18.2]	55.0	[-]
域	関東甲信越	509	67	247	179	13	3
	[前月比]	[-13.7]	[-28.0]	[-17.4]	[-2.2]	[-13.3]	[-]
物	首都圏	4,342	2,357	1,197	656	102	30
	[前月比]	[-24.5]	[-24.6]	[-26.1]	[-20.5]	[-34.2]	25.0
別	中部4県	383	59	171	137	15	1
	[前月比]	[-21.7]	[-37.2]	[-11.4]	[-27.9]	25.0	[-]
件	中部圏	1,153	341	404	374	33	1
	[前月比]	[-6.6]	[-7.1]	[-3.1]	[-9.0]	[-5.7]	[-75.0]
取	近畿圏	2,958	1,132	1,190	559	67	10
	[前月比]	[-19.9]	[-20.8]	[-20.5]	[-18.3]	[-11.8]	25.0
引	中国	484	136	192	139	17	0
	[前月比]	[-15.5]	0.7	[-19.0]	[-19.7]	[-37.0]	[-100.0]
態	四国	172	33	88	45	6	0
	[前月比]	[-18.1]	[-28.3]	[-7.4]	[-26.2]	[-25.0]	[-]
様	九州	999	273	410	281	33	2
	[前月比]	[-11.0]	[-32.8]	4.9	[-1.7]	[-15.4]	[-]
別	専属専任	2,123	973	647	434	66	3
	[前月比]	[-21.3]	[-23.2]	[-22.4]	[-18.6]	3.1	200.0
件	専任媒介	6,477	2,819	1,991	1,457	186	24
	[前月比]	[-22.7]	[-25.4]	[-21.6]	[-19.5]	[-21.8]	60.0
別	一般媒介	1,511	482	480	474	68	7
	[前月比]	[-12.8]	[-13.2]	[-17.9]	[-6.3]	[-16.0]	16.7
取	売主	2,027	386	1,240	363	23	15
	[前月比]	[-11.4]	[-19.2]	[-9.6]	[-7.6]	[-23.3]	0.0
引	代理	44	19	13	12	0	0
	[前月比]	[-30.2]	11.8	[-45.8]	[-25.0]	[-100.0]	[-]
賃	総 計	25,864	22,531	1,066	73	278	1,916
	[前月比]	[-13.5]	[-14.1]	[-12.3]	10.6	[-16.0]	[-6.7]
賃	北海道	85	72	5	1	4	3
	[前月比]	[-4.5]	[-4.0]	[-16.7]	[-50.0]	33.3	0.0
地	東北	296	232	37	1	3	23
	[前月比]	10.0	5.5	68.2	0.0	50.0	[-4.2]
域	関東甲信越	339	237	37	4	6	55
	[前月比]	[-7.1]	[-16.3]	37.0	100.0	[-60.0]	44.7
物	首都圏	13,429	11,869	362	32	94	1,072
	[前月比]	[-16.5]	[-17.2]	[-23.5]	28.0	[-2.1]	[-7.2]
件	中部4県	258	181	29	3	8	37
	[前月比]	[-4.4]	0.0	[-9.4]	0.0	[-33.3]	[-11.9]
別	中部圏	344	307	13	1	7	16
	[前月比]	6.2	4.1	44.4	[-50.0]	133.3	6.7
賃	近畿圏	9,535	8,377	467	25	125	541
	[前月比]	[-11.9]	[-11.9]	[-11.7]	0.0	[-20.4]	[-10.3]
件	中国	246	143	37	1	7	58
	[前月比]	[-1.2]	[-7.1]	15.6	0.0	[-46.2]	18.4
別	四国	63	44	6	1	3	9
	[前月比]	[-16.0]	[-25.4]	[-33.3]	0.0	[-]	50.0
賃	九州	1,269	1,069	73	4	21	102
	[前月比]	[-4.9]	[-3.4]	[-3.9]	0.0	[-30.0]	[-13.6]

* 成約件数は成約報告のあった件数である。

指定流通機構実態調査集計、総括表 当月末総登録件数

		総 数	物 件 種 別					
			マンション	一 戸 建	土 地	住宅外全部	住宅外一部	
全	総計件数 [前月比]	859,585 [1.2]	528,798 [1.0]	108,545 [2.0]	123,281 [0.8]	26,431 [0.4]	72,530 [2.0]	
売 地 り 域 物 別 件 態 様 別	総 計 [前月比]	307,300 [1.2]	75,200 [0.9]	93,883 [2.1]	119,351 [0.9]	17,499 [0.2]	1,367 [-0.7]	
	北海道 [前月比]	11,543 [4.5]	1,988 [1.5]	3,167 [5.8]	5,427 [4.4]	940 [7.6]	21 [5.0]	
	東北 [前月比]	14,432 [1.9]	1,540 [0.1]	5,009 [2.9]	7,007 [1.7]	840 [1.1]	36 [12.5]	
	関東甲信越 [前月比]	28,023 [2.1]	1,530 [1.3]	7,915 [4.0]	17,170 [1.4]	1,356 [1.9]	52 [-8.8]	
	首都圏 [前月比]	91,878 [1.3]	38,597 [0.9]	26,349 [3.0]	20,125 [0.9]	6,108 [-1.5]	699 [-0.4]	
	中部4県 [前月比]	19,042 [2.1]	1,418 [-1.6]	5,566 [2.0]	10,952 [2.6]	1,063 [2.0]	43 [10.3]	
	中部圏 [前月比]	29,964 [1.1]	5,011 [0.0]	8,975 [2.1]	14,552 [0.7]	1,366 [2.2]	60 [-1.6]	
	近畿圏 [前月比]	56,948 [0.7]	16,268 [1.0]	20,370 [1.2]	17,191 [0.2]	2,771 [-1.7]	348 [-0.6]	
	中国 [前月比]	16,742 [-1.2]	1,413 [1.7]	5,364 [-2.1]	9,224 [-1.0]	722 [-1.5]	19 [-13.6]	
	四国 [前月比]	7,202 [-3.4]	648 [-2.8]	1,954 [-1.3]	4,204 [-4.5]	387 [-1.8]	9 [-30.8]	
	九州 [前月比]	31,526 [1.5]	6,787 [1.5]	9,214 [1.8]	13,499 [1.3]	1,946 [2.0]	80 [0.0]	
	専属専任 [前月比]	34,205 [0.3]	10,213 [-0.2]	10,012 [1.6]	11,857 [0.1]	1,991 [-1.4]	132 [-0.8]	
	専任媒介 [前月比]	115,321 [0.6]	31,280 [-0.2]	32,037 [0.9]	45,564 [1.0]	5,938 [1.0]	502 [-2.3]	
	一般媒介 [前月比]	92,152 [1.4]	18,677 [1.3]	21,787 [2.3]	43,736 [1.2]	7,487 [-0.1]	465 [-1.9]	
	売主 [前月比]	62,171 [2.6]	13,988 [3.3]	29,407 [3.7]	16,950 [0.4]	1,601 [0.7]	225 [8.2]	
	代理 [前月比]	3,451 [1.0]	1,042 [2.7]	640 [0.5]	1,244 [0.7]	482 [0.0]	43 [-8.5]	
	総 計 [前月比]	552,285 [1.1]	453,598 [1.0]	14,662 [1.3]	3,930 [-1.5]	8,932 [1.0]	71,163 [2.0]	
	賃 地 賃 域 物 別	北海道 [前月比]	3,565 [3.8]	3,156 [4.5]	69 [9.5]	53 [-5.4]	42 [-2.3]	245 [-3.2]
		東北 [前月比]	9,754 [0.9]	7,926 [-0.8]	303 [5.2]	144 [12.5]	180 [7.8]	1,201 [9.9]
関東甲信越 [前月比]		16,176 [-3.1]	12,931 [-4.5]	610 [-0.5]	314 [-5.7]	410 [2.8]	1,911 [6.0]	
首都圏 [前月比]		368,257 [1.2]	314,125 [1.3]	5,475 [1.6]	1,123 [-0.4]	3,453 [-1.7]	44,081 [0.7]	
中部4県 [前月比]		7,941 [3.9]	4,935 [1.1]	551 [4.4]	207 [-6.3]	538 [7.0]	1,710 [13.3]	
中部圏 [前月比]		7,952 [7.1]	5,218 [6.1]	291 [5.8]	420 [0.5]	346 [10.5]	1,677 [11.7]	
近畿圏 [前月比]		105,402 [1.2]	82,786 [0.9]	5,058 [0.6]	863 [-2.0]	2,795 [2.2]	13,900 [2.9]	
中国 [前月比]		10,185 [3.0]	6,256 [2.9]	1,010 [0.1]	224 [-6.7]	368 [2.8]	2,327 [5.7]	
四国 [前月比]		2,425 [0.7]	1,421 [-0.6]	268 [8.5]	91 [-3.2]	122 [-9.6]	523 [4.2]	
九州 [前月比]		20,628 [-0.7]	14,844 [-0.9]	1,027 [-0.8]	491 [-0.4]	678 [-0.4]	3,588 [0.1]	