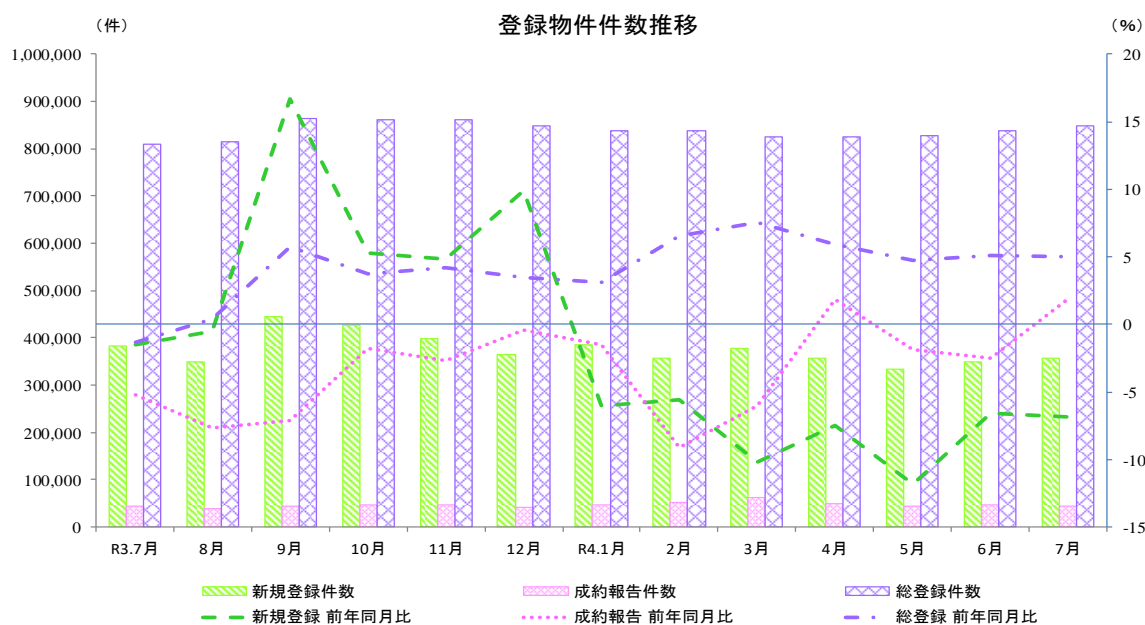


## 指定流通機構の活用状況について (令和4年7月分)

### 1. 概況

令和4年7月の指定流通機構の活用状況をみると、新規登録件数は356,111件と前年同月比で7ヶ月連続してマイナスとなり、前月比では2ヶ月連続してプラスとなった。成約報告件数は45,054件と前年同月比で3ヶ月ぶりにプラスに転じ、前月比ではふたたびマイナスに転じた。総登録件数は849,660件と前年同月比で12ヶ月連続してプラスとなり、前月比では3ヶ月連続してプラスとなった。



### 物件件数の推移

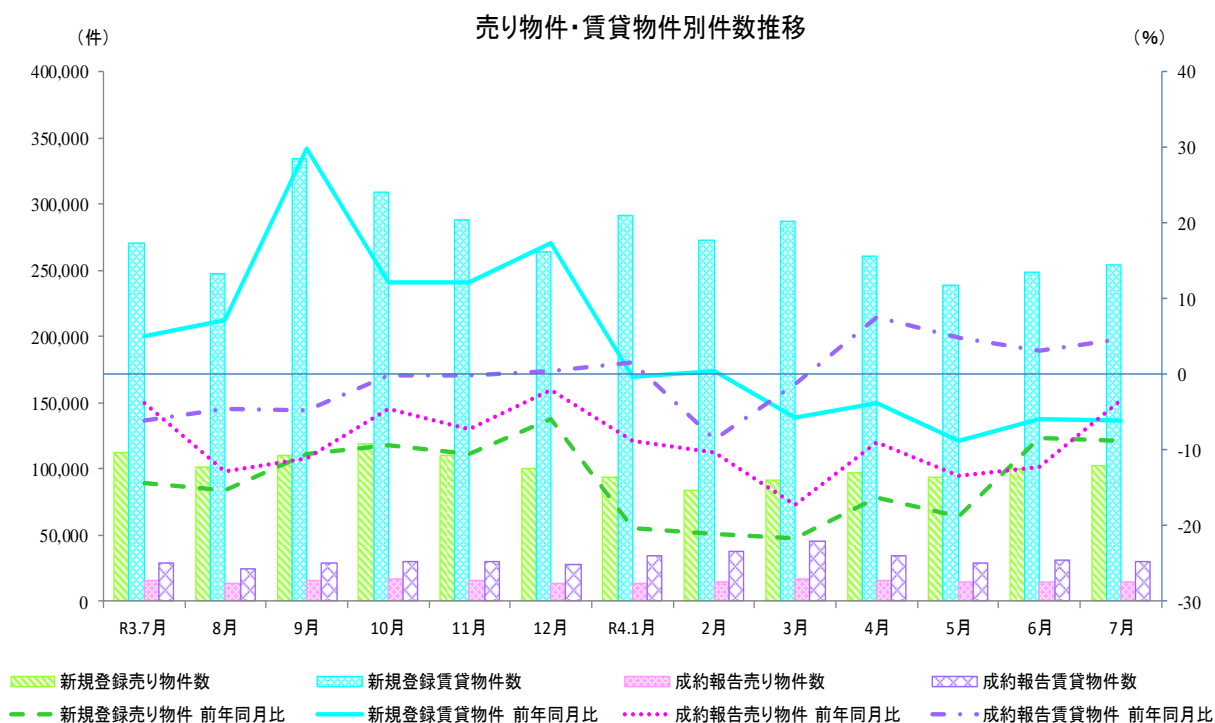
	R3.7月	8月	9月	10月	11月	12月	R4.1月	2月	3月	4月	5月	6月	7月
新規登録件数(件)	382,307	349,286	445,036	427,604	398,228	365,158	385,517	357,213	378,723	357,811	332,763	349,131	356,111
前年同月比(%)	▲1.5	▲0.5	16.7	5.3	4.8	9.9	▲6.0	▲5.6	▲10.2	▲7.5	▲11.8	▲6.6	▲6.9
前月比(%)	2.3	▲8.6	27.4	▲3.9	▲6.9	▲8.3	5.6	▲7.3	6.0	▲5.5	▲7.0	4.9	2.0
成約報告件数(件)	44,222	38,827	44,537	46,857	45,451	41,400	47,718	52,704	62,418	49,822	43,635	45,930	45,054
前年同月比(%)	▲5.2	▲7.7	▲7.1	▲1.7	▲2.7	▲0.4	▲1.5	▲9.1	▲6.1	1.9	▲1.9	▲2.5	1.9
前月比(%)	▲6.1	▲12.2	14.7	5.2	▲3.0	▲8.9	15.3	10.4	18.4	▲20.2	▲12.4	5.3	▲1.9
総登録件数(件)	808,898	814,480	863,991	861,322	862,294	849,180	838,799	838,038	825,903	823,907	827,328	836,832	849,660
前年同月比(%)	▲1.3	0.3	5.7	3.7	4.2	3.5	3.1	6.5	7.6	5.9	4.7	5.1	5.0
前月比(%)	1.6	0.7	6.1	▲0.3	0.1	▲1.5	▲1.2	▲0.1	▲1.4	▲0.2	0.4	1.1	1.5

※ 公益社団法人西日本不動産流通機構より、中国、四国、九州の平成31年4月から令和3年12月まで(以下「対象期間」といいます。)の新規登録件数について確認を行っているとの連絡を受けております。対象期間のこれらの地域及び全国合計の新規登録件数、並びにこの件数を用いて算出されている前年比の数値のご利用に当たってはご注意ください。

## 2. 売り・賃貸別物件数

令和4年7月の売り物件数をみると、新規登録件数は102,239件と前年同月比で28ヶ月連続してマイナスとなり、前月比では2ヶ月連続してプラスとなった。成約報告件数は15,167件と前年同月比で13ヶ月連続してマイナスとなり、前月比では2ヶ月連続してプラスとなった。総登録件数は303,627件と前年同月比で2ヶ月連続してプラスとなり、前月比では3ヶ月連続してプラスとなった。

令和4年7月の賃貸物件数をみると、新規登録件数は253,872件と前年同月比で5ヶ月連続してマイナスとなり、前月比では2ヶ月連続してプラスとなった。成約報告件数は29,887件と前年同月比で4ヶ月連続してプラスとなり、前月比ではふたたびマイナスに転じた。総登録件数は546,033件と前年同月比で26ヶ月連続してプラスとなり、前月比では4ヶ月連続してプラスとなった。



### R4年7月 売り物件・賃貸物件別件数

<b>新規登録件数</b>	356,111 件	前年同月比	▲ 6.9 %	👇	前月比	2.0 %	➡
売り物件	102,239 件	前年同月比	▲ 8.8 %	👇	前月比	2.1 %	➡
賃貸物件	253,872 件	前年同月比	▲ 6.1 %	👇	前月比	2.0 %	➡
<b>成約報告件数</b>	45,054 件	前年同月比	1.9 %	➡	前月比	▲ 1.9 %	➡
売り物件	15,167 件	前年同月比	▲ 3.3 %	👇	前月比	1.3 %	➡
賃貸物件	29,887 件	前年同月比	4.7 %	👉	前月比	▲ 3.5 %	👇
<b>総登録件数</b>	849,660 件	前年同月比	5.0 %	👉	前月比	1.5 %	➡
売り物件	303,627 件	前年同月比	4.8 %	👉	前月比	1.8 %	➡
賃貸物件	546,033 件	前年同月比	5.1 %	👉	前月比	1.36 %	➡

凡例: 📈 10% ~ 📊 3% ~ 10% ➡ -3% ~ 3% 👇 -10% ~ -3% 📉 ~ -10%

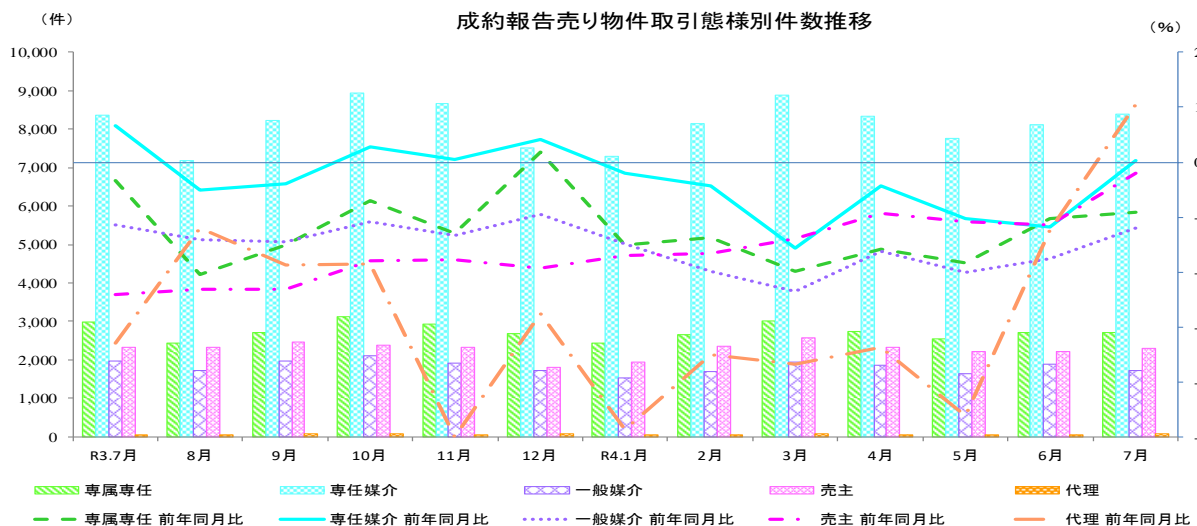
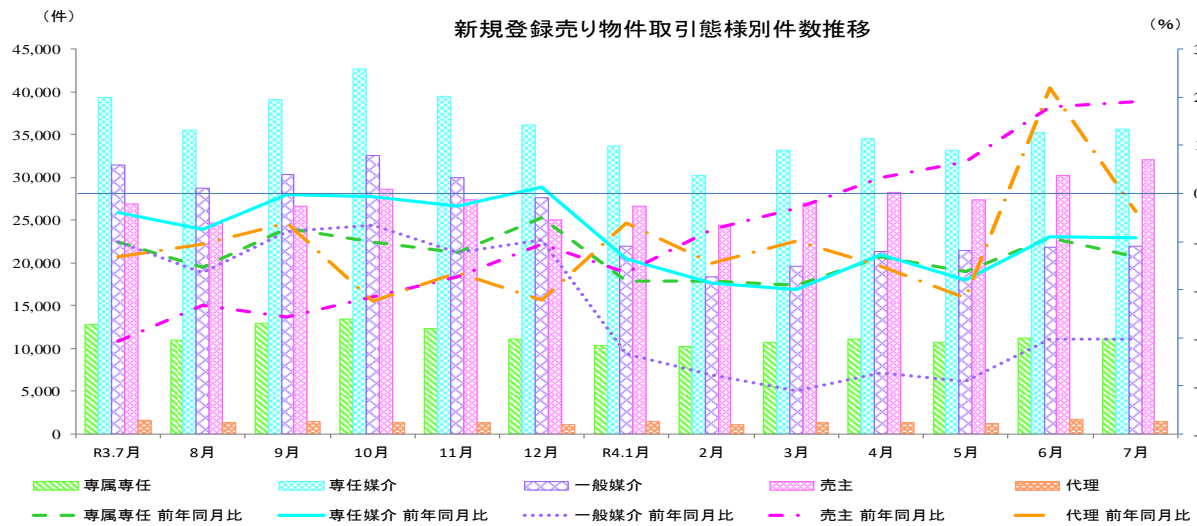
### 3. 売り物件の取引態様別物件数

令和4年7月の新規登録売り物件の取引態様別をみると、専任媒介は34.9%を占め、次いで売主は31.3%を占めている。成約報告売り物件の取引態様別をみると、専任媒介は55.3%を占め、次いで専属専任は17.8%を占めている。

R4年7月 売り物件の取引態様別件数

	取引態様	件数	構成比	前年同月比	前月比
新規登録件数	媒介契約	68,705 件	67.2 %	▲ 17.8 %	↓ 0.6 %
	専属専任	11,130 件	10.9 %	▲ 13.3 %	▲ 0.4 %
	専任媒介	35,670 件	34.9 %	▲ 9.3 %	→ 1.1 %
	一般媒介	21,905 件	21.4 %	▲ 30.3 %	↓ 0.4 %
	売主	32,051 件	31.3 %	19.0 %	↑ 6.2 %
	代理	1,483 件	1.5 %	▲ 3.8 %	▲ 10.9 %
成約報告件数	媒介契約	12,816 件	84.5 %	▲ 3.6 %	→ 0.9 %
	専属専任	2,699 件	17.8 %	▲ 9.1 %	→ 0.0 %
	専任媒介	8,384 件	55.3 %	0.3 %	↔ 3.4 %
	一般媒介	1,733 件	11.4 %	▲ 12.1 %	▲ 8.6 %
	売主	2,288 件	15.1 %	▲ 2.1 %	↔ 3.4 %
	代理	63 件	0.4 %	10.5 %	↑ 10.5 %

凡例: ↑ 10% ~   ↗ 3% ~ 10%   → -3% ~ 3%   ↘ -10% ~ -3%   ↓ ~ -10%



## 指定流通機構実態調査集計、総括表 新規登録件数

		総 数	物 件 種 別				
			マンション	一 戸 建	土 地	住宅外全部	住宅外一部
全 総計件数		356,111	260,507	39,857	27,480	7,839	20,428
[前月比]		[ 2.0 ]	[ 1.6 ]	[ 5.0 ]	[ 0.8 ]	[ -1.3 ]	[ 4.0 ]
売 地	総 計	102,239	36,571	33,175	26,608	5,348	537
	[前月比]	[ 2.1 ]	[ 1.3 ]	[ 4.8 ]	[ 0.5 ]	[ -1.2 ]	[ 13.8 ]
	北海道	3,677	1,051	991	1,353	279	3
	[前月比]	[ -0.5 ]	[ -1.4 ]	[ -2.8 ]	[ 4.2 ]	[ -7.0 ]	[ -70.0 ]
	東北	3,850	736	1,492	1,375	239	8
	[前月比]	[ 3.3 ]	[ -0.4 ]	[ 17.0 ]	[ -5.4 ]	[ -6.3 ]	[ 33.3 ]
	関東甲信越	6,733	502	2,802	3,060	361	8
	[前月比]	[ -0.8 ]	[ -3.3 ]	[ 7.0 ]	[ -6.6 ]	[ 1.1 ]	[ -55.6 ]
	首都圏	46,087	23,185	12,566	7,524	2,447	365
	[前月比]	[ 2.1 ]	[ 0.3 ]	[ 4.4 ]	[ 4.8 ]	[ -1.3 ]	[ 14.1 ]
	中部4県	3,967	508	1,379	1,811	257	12
	[前月比]	[ -2.5 ]	[ 6.7 ]	[ -4.0 ]	[ -4.7 ]	[ 4.0 ]	[ 50.0 ]
	中部圏	7,764	1,714	2,910	2,763	363	14
	[前月比]	[ 3.1 ]	[ 0.1 ]	[ 3.6 ]	[ 4.4 ]	[ 2.8 ]	[ 7.7 ]
	近畿圏	17,598	6,013	6,598	4,149	737	101
	[前月比]	[ 7.1 ]	[ 6.9 ]	[ 9.0 ]	[ 4.4 ]	[ 3.5 ]	[ 48.5 ]
	中国	3,667	474	1,434	1,606	149	4
[前月比]	[ -8.4 ]	[ -15.5 ]	[ -0.4 ]	[ -11.8 ]	[ -13.9 ]	[ -55.6 ]	
四国	1,283	184	471	549	74	5	
[前月比]	[ 1.7 ]	[ -1.1 ]	[ 12.9 ]	[ -2.1 ]	[ -20.4 ]	[ 0.0 ]	
九州	7,613	2,204	2,532	2,418	442	17	
[前月比]	[ 1.7 ]	[ 4.8 ]	[ -0.7 ]	[ 2.0 ]	[ -0.7 ]	[ 13.3 ]	
取 引 態 様 別	専属専任	11,130	4,244	3,154	2,936	731	65
	[前月比]	[ -0.4 ]	[ -3.2 ]	[ 5.4 ]	[ -0.3 ]	[ -9.0 ]	[ 38.3 ]
	専任媒介	35,670	12,482	10,666	10,576	1,747	199
	[前月比]	[ 1.1 ]	[ 1.1 ]	[ 3.3 ]	[ -1.0 ]	[ -1.1 ]	[ 19.9 ]
	一般媒介	21,905	6,476	6,490	6,904	1,918	117
	[前月比]	[ 0.4 ]	[ 1.9 ]	[ 1.1 ]	[ -1.2 ]	[ -0.1 ]	[ -10.7 ]
売主	32,051	12,660	12,618	5,911	737	125	
[前月比]	[ 6.2 ]	[ 4.5 ]	[ 7.8 ]	[ 7.2 ]	[ -0.5 ]	[ 28.9 ]	
代理	1,483	709	247	281	215	31	
[前月比]	[ -10.9 ]	[ -20.8 ]	[ 16.5 ]	[ -17.8 ]	[ 16.2 ]	[ 0.0 ]	
賃 物 別		253,872	223,936	6,682	872	2,491	19,891
[前月比]		[ 2.0 ]	[ 1.7 ]	[ 5.9 ]	[ 10.4 ]	[ -1.5 ]	[ 3.7 ]
賃 地	北海道	2,328	2,229	12	22	12	53
	[前月比]	[ 12.2 ]	[ 14.5 ]	[ -47.8 ]	[ 175.0 ]	[ -7.7 ]	[ -36.9 ]
	東北	5,963	5,508	101	27	50	277
	[前月比]	[ 8.7 ]	[ 7.1 ]	[ 2.0 ]	[ 22.7 ]	[ 13.6 ]	[ 54.7 ]
	関東甲信越	10,107	9,194	254	68	80	511
	[前月比]	[ 0.5 ]	[ -2.0 ]	[ 16.0 ]	[ 78.9 ]	[ 11.1 ]	[ 46.4 ]
	首都圏	180,373	162,550	3,291	253	1,164	13,115
	[前月比]	[ 1.8 ]	[ 2.0 ]	[ 5.1 ]	[ -9.6 ]	[ 1.3 ]	[ -0.7 ]
	中部4県	2,417	1,615	187	53	109	453
	[前月比]	[ 8.0 ]	[ -5.3 ]	[ 0.0 ]	[ 35.9 ]	[ 16.0 ]	[ 113.7 ]
	中部圏	3,100	2,414	114	85	76	411
	[前月比]	[ -2.2 ]	[ 2.0 ]	[ 9.6 ]	[ 37.1 ]	[ -53.1 ]	[ -13.3 ]
	近畿圏	38,134	31,821	1,844	195	733	3,541
	[前月比]	[ 0.4 ]	[ -0.2 ]	[ 6.7 ]	[ -2.0 ]	[ -2.8 ]	[ 3.3 ]
	中国	3,554	2,261	389	63	90	751
	[前月比]	[ 4.6 ]	[ -7.9 ]	[ 5.7 ]	[ 80.0 ]	[ 8.4 ]	[ 63.6 ]
	四国	695	503	57	14	19	102
[前月比]	[ 21.9 ]	[ 24.8 ]	[ -3.4 ]	[ -17.6 ]	[ -17.4 ]	[ 50.0 ]	
九州	7,201	5,841	433	92	158	677	
[前月比]	[ 4.8 ]	[ 5.4 ]	[ 10.7 ]	[ 2.2 ]	[ 16.2 ]	[ -5.2 ]	

\* 前月比欄の数値は、対前月増減率である。

\* 「関東甲信越」は、茨城県・栃木県・群馬県・新潟県・山梨県・長野県、「首都圏」は、東京都・千葉県・埼玉県・神奈川県、「中部圏」は、愛知県・岐阜県・三重県、「中部4県」は、富山県・石川県・福井県・静岡県、「近畿圏」は、大阪府・京都府・兵庫県・滋賀県・奈良県・和歌山県をいう。

指定流通機構実態調査 売り物件・新規登録件数 時系列表

	3年7月	3年8月	3年9月	3年10月	3年11月	3年12月	4年1月	4年2月	4年3月	4年4月	4年5月	4年6月	4年7月	一年間計	
	件数	件数	件数	件数	件数	件数	件数	件数	件数	件数	件数	件数	件数	件数	
	(前月比)	(前月比)	(前月比)	(前月比)	(前月比)	(前月比)	(前月比)	(前月比)	(前月比)	(前月比)	(前月比)	(前月比)	(前月比)	(前月比)	
	(前年比)	(前年比)	(前年比)	(前年比)	(前年比)	(前年比)	(前年比)	(前年比)	(前年比)	(前年比)	(前年比)	(前年比)	(前年比)	(構成比)	
総数	112,052 (2.4) [-14.4]	101,222 (-9.7) [-15.2]	110,620 (9.3) [-10.6]	118,643 (7.3) [-9.4]	110,297 (-7.0) [-10.5]	100,913 (-8.5) [-5.9]	94,030 (-6.8) [-20.3]	84,288 (-10.4) [-21.0]	91,889 (9.0) [-21.7]	96,632 (5.2) [-16.3]	93,871 (-2.9) [-18.7]	100,117 (6.7) [-8.5]	102,239 (2.1) [-8.8]	1,204,761	
北海道	2,693 (14.2) [-11.9]	2,229 (-17.2) [-1.3]	2,625 (17.8) [0.4]	2,809 (7.0) [1.5]	2,513 (-10.5) [1.3]	2,271 (-9.6) [14.5]	2,124 (-6.5) [-4.1]	2,096 (-1.3) [6.4]	2,426 (15.7) [7.0]	2,779 (14.6) [14.3]	3,040 (9.4) [28.8]	3,695 (21.5) [56.7]	3,677 (-0.5) [36.5]	32,284 (2.7)	
東北	2,999 (-1.5) [-15.7]	2,734 (-8.8) [-12.2]	3,154 (15.4) [-9.1]	3,394 (7.6) [-11.2]	3,037 (-10.5) [-13.0]	2,804 (-7.7) [-16.4]	2,906 (3.6) [-24.2]	2,687 (-7.5) [-2.2]	2,864 (6.6) [-9.7]	3,498 (22.1) [9.9]	3,494 (-0.1) [22.2]	3,728 (6.7) [22.4]	3,850 (3.3) [28.4]	38,150 (3.2)	
関東甲信越	4,888 (4.3) [0.6]	4,169 (-14.7) [-5.3]	4,279 (2.6) [-28.2]	5,068 (18.4) [-9.8]	4,529 (-10.6) [-10.7]	4,052 (-10.5) [0.8]	5,034 (24.2) [-4.8]	4,294 (-14.7) [1.3]	5,167 (20.3) [10.4]	5,676 (9.9) [22.2]	5,889 (3.8) [22.6]	6,788 (15.3) [44.9]	6,733 (-0.8) [37.7]	61,678 (5.1)	
圏	37,069 (6.8) [-23.9]	32,003 (-13.7) [-17.8]	36,294 (13.4) [-17.5]	39,851 (9.8) [-14.9]	37,450 (-6.0) [-11.9]	33,328 (-11.0) [-1.5]	37,049 (11.2) [-3.3]	37,596 (1.5) [4.7]	40,743 (8.4) [7.1]	43,251 (6.2) [13.9]	40,643 (-6.0) [17.3]	45,127 (11.0) [30.0]	46,087 (2.1) [24.3]	469,422 (39.0)	
別	中部4県	3,804 (-21.3) [1.4]	3,738 (-1.7) [11.7]	4,044 (8.2) [-1.1]	4,013 (-0.8) [-7.7]	3,738 (-6.9) [-8.1]	3,145 (-15.9) [-11.8]	3,836 (22.0) [-20.4]	3,133 (-18.3) [-16.5]	3,771 (20.4) [-15.2]	4,151 (10.1) [-28.6]	4,086 (-1.6) [-43.3]	4,068 (-0.4) [-15.8]	3,967 (-2.5) [4.3]	45,690 (3.8)
内	中部圏	6,599 (-2.0) [-9.8]	6,085 (-7.8) [-12.7]	6,836 (12.3) [-11.2]	7,029 (2.8) [-9.7]	6,686 (-4.9) [-9.3]	5,943 (-11.1) [-7.7]	7,190 (21.0) [-4.4]	6,741 (-6.2) [6.1]	7,354 (9.1) [2.6]	7,652 (4.1) [5.6]	7,108 (-7.1) [0.3]	7,532 (6.0) [11.8]	7,764 (3.1) [17.7]	83,920 (7.0)
近畿圏	18,620 (2.8) [-10.2]	16,485 (-11.5) [-15.2]	18,691 (13.4) [-10.4]	19,961 (6.8) [-8.5]	17,554 (-12.1) [-10.5]	16,311 (-7.1) [-9.5]	17,301 (6.1) [-11.0]	15,742 (-9.0) [-16.1]	17,115 (8.7) [-15.4]	16,728 (-2.3) [-11.0]	16,032 (-4.2) [-12.2]	16,429 (2.5) [-9.3]	17,598 (7.1) [-5.5]	205,947 (17.1)	
中国	6,967 (1.7) [-8.4]	6,356 (-8.8) [-13.1]	6,594 (3.7) [-0.2]	7,863 (19.2) [2.0]	7,003 (-10.9) [4.4]	6,855 (-2.1) [1.8]	3,613 (-47.3) [-49.4]	2,940 (-18.6) [-54.2]	3,383 (15.1) [-58.1]	3,985 (17.8) [-41.0]	4,080 (2.4) [-44.2]	4,003 (-1.9) [-41.6]	3,667 (-8.4) [-47.4]	60,342 (5.0)	
四国	3,874 (-1.9) [4.8]	4,185 (8.0) [-18.1]	3,780 (-9.7) [-1.1]	3,892 (3.0) [-3.6]	4,380 (12.5) [0.2]	3,485 (-20.4) [-5.0]	4,361 (25.1) [21.9]	1,726 (-60.4) [-57.0]	1,358 (-21.3) [-65.3]	1,192 (-12.2) [-71.0]	1,946 (63.3) [-62.5]	1,262 (-35.1) [-68.0]	1,283 (1.7) [-66.9]	32,850 (2.7)	
九州	24,539 (1.9) [-11.0]	23,238 (-5.3) [-18.6]	24,323 (4.7) [-1.1]	24,763 (1.8) [-5.6]	23,407 (-5.5) [-15.3]	22,719 (-2.9) [-11.2]	10,616 (-53.3) [-58.9]	7,333 (-30.9) [-67.5]	7,708 (5.1) [-69.6]	7,720 (0.2) [-68.4]	7,553 (-2.2) [-70.7]	7,485 (-0.9) [-68.9]	7,613 (1.7) [-69.0]	174,478 (14.5)	
取	専属専任媒介	12,834 (4.4) [-10.0]	10,920 (-14.9) [-15.3]	12,949 (18.6) [-7.3]	13,414 (3.6) [-10.1]	12,259 (-8.6) [-12.3]	11,028 (-10.0) [-5.0]	10,292 (-6.7) [-18.1]	10,191 (-1.0) [-18.1]	10,762 (5.6) [-19.2]	11,134 (3.5) [-13.2]	10,728 (-3.6) [-16.2]	11,172 (4.1) [-9.2]	11,130 (-0.4) [-13.3]	135,979 (11.3)
引	専任媒介	39,326 (1.4) [-3.9]	35,511 (-9.7) [-7.6]	39,166 (10.3) [-0.3]	42,661 (8.9) [-0.6]	39,442 (-7.5) [-2.7]	36,129 (-8.4) [1.3]	33,737 (-6.6) [-13.5]	30,279 (-10.2) [-18.7]	33,251 (9.8) [-19.9]	34,550 (3.9) [-12.7]	33,191 (-3.9) [-17.9]	35,292 (6.3) [-9.0]	35,670 (1.1) [-9.3]	428,879 (35.6)
態	一般媒介	31,423 (0.2) [-10.1]	28,797 (-8.4) [-16.5]	30,367 (5.5) [-7.9]	32,602 (7.4) [-6.6]	29,950 (-8.1) [-12.3]	27,603 (-7.8) [-9.6]	22,006 (-20.3) [-33.4]	18,366 (-16.5) [-37.7]	19,581 (6.6) [-41.1]	21,333 (8.9) [-37.3]	21,403 (0.3) [-39.1]	21,818 (1.9) [-30.4]	21,905 (0.4) [-30.3]	295,731 (24.5)
別	売主	26,928 (5.2) [-30.8]	24,635 (-8.5) [-23.3]	26,695 (8.4) [-25.7]	28,628 (7.2) [-21.6]	27,355 (-4.4) [-17.3]	25,070 (-8.4) [-10.4]	26,599 (6.1) [-16.4]	24,383 (-8.3) [-7.4]	26,987 (10.7) [-3.2]	28,265 (4.7) [3.2]	27,345 (-3.3) [6.7]	30,170 (10.3) [17.9]	32,051 (6.2) [19.0]	328,183 (27.2)
代理	1,541 (12.8) [-13.2]	1,359 (-11.8) [-10.6]	1,443 (6.2) [-6.2]	1,338 (-7.3) [-22.3]	1,291 (-3.5) [-16.4]	1,083 (-16.1) [-22.1]	1,396 (28.9) [-6.2]	1,069 (-23.4) [-14.4]	1,308 (22.4) [-9.8]	1,350 (3.2) [-15.3]	1,204 (-10.8) [-21.8]	1,665 (38.3) [21.9]	1,483 (-10.9) [-3.8]	15,989 (1.3)	
物	マンション	34,919 (6.7) [-12.4]	30,990 (-11.3) [-11.8]	34,581 (11.6) [-11.1]	37,711 (9.1) [-6.6]	35,200 (-6.7) [-6.0]	32,223 (-8.5) [-4.1]	33,376 (3.6) [-6.9]	32,020 (-4.1) [-4.2]	35,295 (10.2) [-1.7]	35,321 (0.1) [2.1]	33,193 (-6.0) [-0.1]	36,102 (8.8) [10.3]	36,571 (1.3) [4.7]	412,583 (34.2)
件	一戸建	35,929 (-0.1) [-16.0]	31,988 (-11.0) [-17.1]	35,686 (11.6) [-9.0]	38,691 (8.4) [-7.5]	35,261 (-8.9) [-9.5]	32,328 (-8.3) [-4.5]	29,985 (-7.2) [-21.6]	25,760 (-14.1) [-24.3]	28,487 (10.6) [-24.7]	30,430 (6.8) [-19.6]	29,729 (-2.3) [-21.4]	31,653 (6.5) [-12.0]	33,175 (4.8) [-7.7]	383,173 (31.8)
種	土地	34,863 (1.6) [-16.1]	32,424 (-7.0) [-18.3]	34,272 (5.7) [-12.8]	35,524 (3.7) [-15.6]	33,796 (-4.9) [-16.6]	30,942 (-8.4) [-9.4]	25,142 (-18.7) [-33.4]	21,558 (-14.3) [-35.8]	22,541 (4.6) [-39.3]	25,222 (11.9) [-31.1]	25,562 (1.3) [-33.1]	26,476 (3.6) [-22.9]	26,608 (0.5) [-23.7]	340,067 (28.2)
別	住宅外(全部)	5,819 (0.4) [-5.5]	5,424 (-6.8) [-1.1]	5,559 (2.5) [-3.4]	6,149 (10.6) [0.8]	5,447 (-11.4) [-7.1]	4,934 (-9.4) [-4.7]	4,954 (0.4) [-10.7]	4,463 (-9.9) [-14.2]	5,004 (12.1) [-15.7]	5,151 (2.9) [-10.7]	4,901 (-4.9) [-14.1]	5,414 (10.5) [-6.6]	5,348 (-1.2) [-8.1]	62,748 (5.2)
住宅外(一部)	522 (-5.8) [1.4]	396 (-24.1) [-21.4]	522 (31.8) [2.8]	568 (8.8) [1.2]	593 (4.4) [13.0]	486 (-18.0) [8.2]	573 (17.9) [-2.7]	487 (-15.0) [-6.2]	562 (15.4) [-4.3]	508 (-9.6) [-10.4]	486 (-4.3) [-9.2]	472 (-2.9) [-14.8]	537 (13.8) [2.9]	6,190 (0.5)	

※ 構成比は、四捨五入による端数処理のため内数の合計が100%にならないことがある

指定流通機構実態調査集計、総括表 地域別取引態様別売物件月間新規登録件数

地域	取引態様	総数	物件種別				
			マンション	一戸建	土地	住宅外全部	住宅外一部
北海道	専属専任 [構成比]	292 [ 7.9]	70 [ 6.7]	76 [ 7.7]	120 [ 8.9]	26 [ 9.3]	0 [ 0.0]
	専任媒介 [構成比]	1,895 [ 51.5]	409 [ 38.9]	596 [ 60.1]	739 [ 54.6]	149 [ 53.4]	2 [ 66.7]
	一般媒介 [構成比]	827 [ 22.5]	176 [ 16.7]	200 [ 20.2]	364 [ 26.9]	86 [ 30.8]	1 [ 33.3]
	売主 [構成比]	647 [ 17.6]	395 [ 37.6]	117 [ 11.8]	120 [ 8.9]	15 [ 5.4]	0 [ 0.0]
	代理 [構成比]	16 [ 0.4]	1 [ 0.1]	2 [ 0.2]	10 [ 0.7]	3 [ 1.1]	0 [ 0.0]
	合計 [地域比]	3,677 [ 3.6]	1,051 [ 2.9]	991 [ 3.0]	1,353 [ 5.1]	279 [ 5.2]	3 [ 0.6]
東北	専属専任 [構成比]	280 [ 7.3]	40 [ 5.4]	84 [ 5.6]	131 [ 9.5]	24 [ 10.0]	1 [ 12.5]
	専任媒介 [構成比]	1,572 [ 40.8]	338 [ 45.9]	556 [ 37.3]	590 [ 42.9]	83 [ 34.7]	5 [ 62.5]
	一般媒介 [構成比]	1,019 [ 26.5]	136 [ 18.5]	311 [ 20.8]	449 [ 32.7]	121 [ 50.6]	2 [ 25.0]
	売主 [構成比]	967 [ 25.1]	220 [ 29.9]	538 [ 36.1]	198 [ 14.4]	11 [ 4.6]	0 [ 0.0]
	代理 [構成比]	12 [ 0.3]	2 [ 0.3]	3 [ 0.2]	7 [ 0.5]	0 [ 0.0]	0 [ 0.0]
	合計 [地域比]	3,850 [ 3.8]	736 [ 2.0]	1,492 [ 4.5]	1,375 [ 5.2]	239 [ 4.5]	8 [ 1.5]
関東甲信越	専属専任 [構成比]	352 [ 5.2]	25 [ 5.0]	87 [ 3.1]	184 [ 6.0]	56 [ 15.5]	0 [ 0.0]
	専任媒介 [構成比]	2,203 [ 32.7]	213 [ 42.4]	792 [ 28.3]	1,079 [ 35.3]	117 [ 32.4]	2 [ 25.0]
	一般媒介 [構成比]	2,467 [ 36.6]	174 [ 34.7]	1,035 [ 36.9]	1,137 [ 37.2]	116 [ 32.1]	5 [ 62.5]
	売主 [構成比]	1,650 [ 24.5]	88 [ 17.5]	881 [ 31.4]	619 [ 20.2]	61 [ 16.9]	1 [ 12.5]
	代理 [構成比]	61 [ 0.9]	2 [ 0.4]	7 [ 0.2]	41 [ 1.3]	11 [ 3.0]	0 [ 0.0]
	合計 [地域比]	6,733 [ 6.6]	502 [ 1.4]	2,802 [ 8.4]	3,060 [ 11.5]	361 [ 6.8]	8 [ 1.5]
首都圏	専属専任 [構成比]	4,739 [ 10.3]	2,656 [ 11.5]	837 [ 6.7]	866 [ 11.5]	324 [ 13.2]	56 [ 15.3]
	専任媒介 [構成比]	14,662 [ 31.8]	6,773 [ 29.2]	4,023 [ 32.0]	3,013 [ 40.0]	741 [ 30.3]	112 [ 30.7]
	一般媒介 [構成比]	6,075 [ 13.2]	3,095 [ 13.3]	1,150 [ 9.2]	977 [ 13.0]	788 [ 32.2]	65 [ 17.8]
	売主 [構成比]	19,581 [ 42.5]	10,053 [ 43.4]	6,391 [ 50.9]	2,555 [ 34.0]	478 [ 19.5]	104 [ 28.5]
	代理 [構成比]	1,030 [ 2.2]	608 [ 2.6]	165 [ 1.3]	113 [ 1.5]	116 [ 4.7]	28 [ 7.7]
	合計 [地域比]	46,087 [ 45.1]	23,185 [ 63.4]	12,566 [ 37.9]	7,524 [ 28.3]	2,447 [ 45.8]	365 [ 68.0]
中部四県	専属専任 [構成比]	386 [ 9.7]	35 [ 6.9]	140 [ 10.2]	168 [ 9.3]	43 [ 16.7]	0 [ 0.0]
	専任媒介 [構成比]	1,460 [ 36.8]	222 [ 43.7]	433 [ 31.4]	722 [ 39.9]	77 [ 30.0]	6 [ 50.0]
	一般媒介 [構成比]	1,405 [ 35.4]	172 [ 33.9]	452 [ 32.8]	666 [ 36.8]	109 [ 42.4]	6 [ 50.0]
	売主 [構成比]	690 [ 17.4]	78 [ 15.4]	349 [ 25.3]	246 [ 13.6]	17 [ 6.6]	0 [ 0.0]
	代理 [構成比]	26 [ 0.7]	1 [ 0.2]	5 [ 0.4]	9 [ 0.5]	11 [ 4.3]	0 [ 0.0]
	合計 [地域比]	3,967 [ 3.9]	508 [ 1.4]	1,379 [ 4.2]	1,811 [ 6.8]	257 [ 4.8]	12 [ 2.2]
中部圏	専属専任 [構成比]	612 [ 7.9]	196 [ 11.4]	159 [ 5.5]	215 [ 7.8]	42 [ 11.6]	0 [ 0.0]
	専任媒介 [構成比]	2,645 [ 34.1]	717 [ 41.8]	678 [ 23.3]	1,113 [ 40.3]	131 [ 36.1]	6 [ 42.9]
	一般媒介 [構成比]	1,952 [ 25.1]	390 [ 22.8]	476 [ 16.4]	935 [ 33.8]	146 [ 40.2]	5 [ 35.7]
	売主 [構成比]	2,524 [ 32.5]	405 [ 23.6]	1,593 [ 54.7]	496 [ 18.0]	27 [ 7.4]	3 [ 21.4]
	代理 [構成比]	31 [ 0.4]	6 [ 0.4]	4 [ 0.1]	4 [ 0.1]	17 [ 4.7]	0 [ 0.0]
	合計 [地域比]	7,764 [ 7.6]	1,714 [ 4.7]	2,910 [ 8.8]	2,763 [ 10.4]	363 [ 6.8]	14 [ 2.6]
近畿圏	専属専任 [構成比]	3,429 [ 19.5]	973 [ 16.2]	1,478 [ 22.4]	843 [ 20.3]	128 [ 17.4]	7 [ 6.9]
	専任媒介 [構成比]	6,038 [ 34.3]	2,485 [ 41.3]	1,928 [ 29.2]	1,380 [ 33.3]	194 [ 26.3]	51 [ 50.5]
	一般媒介 [構成比]	4,110 [ 23.4]	1,447 [ 24.1]	1,439 [ 21.8]	911 [ 22.0]	287 [ 38.9]	26 [ 25.7]
	売主 [構成比]	3,788 [ 21.5]	1,030 [ 17.1]	1,699 [ 25.8]	953 [ 23.0]	92 [ 12.5]	14 [ 13.9]
	代理 [構成比]	233 [ 1.3]	78 [ 1.3]	54 [ 0.8]	62 [ 1.5]	36 [ 4.9]	3 [ 3.0]
	合計 [地域比]	17,598 [ 17.2]	6,013 [ 16.4]	6,598 [ 19.9]	4,149 [ 15.6]	737 [ 13.8]	101 [ 18.8]
中国	専属専任 [構成比]	221 [ 6.0]	26 [ 5.5]	73 [ 5.1]	108 [ 6.7]	14 [ 9.4]	0 [ 0.0]
	専任媒介 [構成比]	1,758 [ 47.9]	295 [ 62.2]	676 [ 47.1]	711 [ 44.3]	73 [ 49.0]	3 [ 75.0]
	一般媒介 [構成比]	1,087 [ 29.6]	97 [ 20.5]	409 [ 28.5]	527 [ 32.8]	53 [ 35.6]	1 [ 25.0]
	売主 [構成比]	580 [ 15.8]	55 [ 11.6]	275 [ 19.2]	244 [ 15.2]	6 [ 4.0]	0 [ 0.0]
	代理 [構成比]	21 [ 0.6]	1 [ 0.2]	1 [ 0.1]	16 [ 1.0]	3 [ 2.0]	0 [ 0.0]
	合計 [地域比]	3,667 [ 3.6]	474 [ 1.3]	1,434 [ 4.3]	1,606 [ 6.0]	149 [ 2.8]	4 [ 0.7]
四国	専属専任 [構成比]	153 [ 11.9]	10 [ 5.4]	58 [ 12.3]	74 [ 13.5]	11 [ 14.9]	0 [ 0.0]
	専任媒介 [構成比]	388 [ 30.2]	89 [ 48.4]	117 [ 24.8]	157 [ 28.6]	22 [ 29.7]	3 [ 60.0]
	一般媒介 [構成比]	461 [ 35.9]	68 [ 37.0]	177 [ 37.6]	184 [ 33.5]	31 [ 41.9]	1 [ 20.0]
	売主 [構成比]	267 [ 20.8]	16 [ 8.7]	118 [ 25.1]	129 [ 23.5]	3 [ 4.1]	1 [ 20.0]
	代理 [構成比]	14 [ 1.1]	1 [ 0.5]	1 [ 0.2]	5 [ 0.9]	7 [ 9.5]	0 [ 0.0]
	合計 [地域比]	1,283 [ 1.3]	184 [ 0.5]	471 [ 1.4]	549 [ 2.1]	74 [ 1.4]	5 [ 0.9]
九州	専属専任 [構成比]	666 [ 8.7]	213 [ 9.7]	162 [ 6.4]	227 [ 9.4]	63 [ 14.3]	1 [ 5.9]
	専任媒介 [構成比]	3,049 [ 40.0]	941 [ 42.7]	867 [ 34.2]	1,072 [ 44.3]	160 [ 36.2]	9 [ 52.9]
	一般媒介 [構成比]	2,502 [ 32.9]	721 [ 32.7]	841 [ 33.2]	754 [ 31.2]	181 [ 41.0]	5 [ 29.4]
	売主 [構成比]	1,357 [ 17.8]	320 [ 14.5]	657 [ 25.9]	351 [ 14.5]	27 [ 6.1]	2 [ 11.8]
	代理 [構成比]	39 [ 0.5]	9 [ 0.4]	5 [ 0.2]	14 [ 0.6]	11 [ 2.5]	0 [ 0.0]
	合計 [地域比]	7,613 [ 7.4]	2,204 [ 6.0]	2,532 [ 7.6]	2,418 [ 9.1]	442 [ 8.3]	17 [ 3.2]
全国	専属専任 [構成比]	11,130 [ 10.9]	4,244 [ 11.6]	3,154 [ 9.5]	2,936 [ 11.0]	731 [ 13.7]	65 [ 12.1]
	専任媒介 [構成比]	35,670 [ 34.9]	12,482 [ 34.1]	10,666 [ 32.2]	10,576 [ 39.7]	1,747 [ 32.7]	199 [ 37.1]
	一般媒介 [構成比]	21,905 [ 21.4]	6,476 [ 17.7]	6,490 [ 19.6]	6,904 [ 25.9]	1,918 [ 35.9]	117 [ 21.8]
	売主 [構成比]	32,051 [ 31.3]	12,660 [ 34.6]	12,618 [ 38.0]	5,911 [ 22.2]	737 [ 13.8]	125 [ 23.3]
	代理 [構成比]	1,483 [ 1.5]	709 [ 1.9]	247 [ 0.7]	281 [ 1.1]	215 [ 4.0]	31 [ 5.8]
	合計	102,239	36,571	33,175	26,608	5,348	537

※構成比とは地域内の取引態様別構成比で、地域比とは全国合計の地域別シェアである。

※構成比・地域比は、四捨五入による端数処理のため内数の合計が100%にならないことがある。

## 指定流通機構実態調査集計、総括表 月間成約件数

		総 数	物 件 種 別				
			マンション	一 戸 建	土 地	住宅外全部	住宅外一部
全	総計件数	45,054	32,319	6,571	3,324	750	2,090
	[前月比]	[-1.9]	[-2.2]	[1.3]	[-1.4]	[6.7]	[-10.6]
売	総 計	15,167	6,097	5,356	3,258	419	37
	[前月比]	[1.3]	[0.9]	[2.7]	[-1.1]	[12.3]	[-15.9]
り	北海道	854	250	319	253	32	0
	[前月比]	[4.1]	[5.0]	[13.1]	[-3.8]	[-5.9]	[-100.0]
地	東北	652	151	289	192	20	0
	[前月比]	[-2.5]	[-2.6]	[-3.7]	[-2.0]	[11.1]	[-]
域	関東甲信越	590	93	299	183	15	0
	[前月比]	[-6.5]	[22.4]	[-5.1]	[-16.8]	[-25.0]	[-]
物	首都圏	5,748	3,125	1,619	825	155	24
	[前月比]	[4.7]	[3.4]	[10.2]	[-1.1]	[9.9]	[9.1]
別	中部4県	489	94	193	190	12	0
	[前月比]	[3.6]	[14.6]	[-10.2]	[13.1]	[71.4]	[-]
件	中部圏	1,234	367	417	411	35	4
	[前月比]	[-4.6]	[-3.9]	[-5.4]	[-3.3]	[-20.5]	[100.0]
取	近畿圏	3,695	1,430	1,497	684	76	8
	[前月比]	[-0.4]	[-5.6]	[2.3]	[2.4]	[49.0]	[-33.3]
引	中国	573	135	237	173	27	1
	[前月比]	[6.9]	[-10.6]	[8.7]	[15.3]	[80.0]	[-50.0]
態	四国	210	46	95	61	8	0
	[前月比]	[-5.0]	[-14.8]	[-5.0]	[-6.2]	[300.0]	[-]
様	九州	1,122	406	391	286	39	0
	[前月比]	[-0.8]	[9.7]	[-5.1]	[-6.2]	[-4.9]	[-100.0]
別	専属専任	2,699	1,267	834	533	64	1
	[前月比]	[0.0]	[0.6]	[-1.9]	[2.5]	[1.6]	[-80.0]
件	専任媒介	8,384	3,780	2,541	1,810	238	15
	[前月比]	[3.4]	[4.7]	[4.5]	[-1.8]	[14.4]	[15.4]
別	一般媒介	1,733	555	585	506	81	6
	[前月比]	[-8.6]	[-14.5]	[-5.8]	[-4.2]	[-6.9]	[-50.0]
取	売主	2,288	478	1,372	393	30	15
	[前月比]	[3.4]	[-4.6]	[5.9]	[1.0]	[130.8]	[15.4]
引	代理	63	17	24	16	6	0
	[前月比]	[10.5]	[-32.0]	[50.0]	[23.1]	[200.0]	[-100.0]
賃	総 計	29,887	26,222	1,215	66	331	2,053
	[前月比]	[-3.5]	[-2.8]	[-4.6]	[-13.2]	[0.3]	[-10.5]
賃	北海道	89	75	6	2	3	3
	[前月比]	[-3.3]	[4.2]	[100.0]	[0.0]	[-50.0]	[-66.7]
地	東北	269	220	22	1	2	24
	[前月比]	[-12.1]	[-11.6]	[4.8]	[-50.0]	[-71.4]	[-11.1]
域	関東甲信越	365	283	27	2	15	38
	[前月比]	[1.4]	[16.0]	[-37.2]	[-77.8]	[87.5]	[-32.1]
物	首都圏	16,088	14,339	473	25	96	1,155
	[前月比]	[-4.8]	[-4.7]	[-2.7]	[-24.2]	[12.9]	[-7.1]
件	中部4県	270	181	32	3	12	42
	[前月比]	[-6.3]	[-10.8]	[28.0]	[50.0]	[-25.0]	[0.0]
別	中部圏	324	295	9	2	3	15
	[前月比]	[-11.7]	[-6.9]	[-47.1]	[-60.0]	[-62.5]	[-25.0]
賃	近畿圏	10,823	9,509	529	25	157	603
	[前月比]	[0.3]	[1.1]	[-3.5]	[56.3]	[5.4]	[-10.9]
物	中国	249	154	32	1	13	49
	[前月比]	[-12.0]	[-1.3]	[-27.3]	[0.0]	[-38.1]	[-19.7]
件	四国	75	59	9	1	0	6
	[前月比]	[17.2]	[51.3]	[-18.2]	[-]	[-100.0]	[-53.8]
賃	九州	1,335	1,107	76	4	30	118
	[前月比]	[-11.9]	[-12.1]	[1.3]	[-33.3]	[3.4]	[-18.6]

\* 成約件数は成約報告のあった件数である。

## 指定流通機構実態調査集計、総括表 当月末総登録件数

		総 数	物 件 種 別					
			マンション	一 戸 建	土 地	住宅外全部	住宅外一部	
全	総計件数 [前月比]	849,660 [ 1.5 ]	523,532 [ 1.5 ]	106,402 [ 2.3 ]	122,292 [ 1.1 ]	26,317 [ 0.2 ]	71,117 [ 2.0 ]	
売 地  り 域  物 別  件 別	総 計 [前月比]	303,627 [ 1.8 ]	74,552 [ 2.4 ]	91,926 [ 2.6 ]	118,301 [ 1.1 ]	17,472 [ 0.7 ]	1,376 [ 2.7 ]	
	北海道 [前月比]	11,042 [ 5.2 ]	1,959 [ 1.5 ]	2,993 [ 4.7 ]	5,196 [ 7.6 ]	874 [ 2.5 ]	20 [ -9.1 ]	
	東北 [前月比]	14,158 [ 3.0 ]	1,538 [ 5.2 ]	4,866 [ 4.7 ]	6,891 [ 1.3 ]	831 [ 3.9 ]	32 [ -3.0 ]	
	関東甲信越 [前月比]	27,441 [ 1.5 ]	1,510 [ 1.0 ]	7,613 [ 2.6 ]	16,930 [ 1.2 ]	1,331 [ -0.2 ]	57 [ -5.0 ]	
	首都圏 [前月比]	90,671 [ 2.7 ]	38,241 [ 2.3 ]	25,571 [ 3.7 ]	19,954 [ 2.2 ]	6,203 [ 2.3 ]	702 [ 2.9 ]	
	中部4県 [前月比]	18,657 [ -0.6 ]	1,441 [ 2.6 ]	5,458 [ 0.2 ]	10,677 [ -1.7 ]	1,042 [ 2.7 ]	39 [ 5.4 ]	
	中部圏 [前月比]	29,641 [ 1.7 ]	5,012 [ 2.1 ]	8,787 [ 3.3 ]	14,444 [ 1.0 ]	1,337 [ -2.3 ]	61 [ 5.2 ]	
	近畿圏 [前月比]	56,567 [ 1.7 ]	16,109 [ 2.9 ]	20,128 [ 1.7 ]	17,161 [ 1.1 ]	2,819 [ -0.8 ]	350 [ 3.6 ]	
	中国 [前月比]	16,944 [ 0.5 ]	1,389 [ 0.2 ]	5,481 [ 1.7 ]	9,319 [ 0.2 ]	733 [ -3.4 ]	22 [ 10.0 ]	
	四国 [前月比]	7,454 [ 0.7 ]	667 [ 2.8 ]	1,979 [ 1.9 ]	4,401 [ 0.3 ]	394 [ -4.6 ]	13 [ 18.2 ]	
	九州 [前月比]	31,052 [ 1.0 ]	6,686 [ 2.2 ]	9,050 [ 1.2 ]	13,328 [ 0.3 ]	1,908 [ 0.3 ]	80 [ 1.3 ]	
	取 引 態 様 別	専属専任 [前月比]	34,087 [ 0.3 ]	10,231 [ 0.0 ]	9,852 [ 0.7 ]	11,851 [ 0.1 ]	2,020 [ 0.3 ]	133 [ 3.9 ]
	専任媒介 [前月比]	114,615 [ 1.5 ]	31,328 [ 1.9 ]	31,760 [ 2.1 ]	45,131 [ 0.9 ]	5,882 [ 1.0 ]	514 [ 1.6 ]	
	一般媒介 [前月比]	90,920 [ 0.9 ]	18,439 [ 1.8 ]	21,307 [ 0.8 ]	43,202 [ 0.7 ]	7,498 [ 0.3 ]	474 [ 1.7 ]	
	売主 [前月比]	60,589 [ 5.1 ]	13,539 [ 6.8 ]	28,370 [ 5.4 ]	16,882 [ 3.7 ]	1,590 [ 1.9 ]	208 [ 8.3 ]	
	代理 [前月比]	3,416 [ -0.8 ]	1,015 [ -1.9 ]	637 [ -2.5 ]	1,235 [ 0.1 ]	482 [ 2.1 ]	47 [ -2.1 ]	
	賃 地  賃 域  物 別	総 計 [前月比]	546,033 [ 1.4 ]	448,980 [ 1.3 ]	14,476 [ 0.2 ]	3,991 [ 2.3 ]	8,845 [ -0.9 ]	69,741 [ 1.9 ]
		北海道 [前月比]	3,435 [ 3.4 ]	3,020 [ 5.9 ]	63 [ -17.1 ]	56 [ 21.7 ]	43 [ 4.9 ]	253 [ -17.9 ]
		東北 [前月比]	9,667 [ 6.9 ]	7,991 [ 7.1 ]	288 [ -2.4 ]	128 [ 4.1 ]	167 [ 8.4 ]	1,093 [ 8.4 ]
		関東甲信越 [前月比]	16,691 [ 1.9 ]	13,544 [ -0.1 ]	613 [ 13.5 ]	333 [ 5.4 ]	399 [ -0.5 ]	1,802 [ 14.9 ]
首都圏 [前月比]		363,913 [ 1.6 ]	310,099 [ 1.7 ]	5,388 [ 1.8 ]	1,127 [ 0.4 ]	3,511 [ 1.4 ]	43,788 [ 1.0 ]	
中部4県 [前月比]		7,643 [ 2.7 ]	4,882 [ -0.4 ]	528 [ 0.8 ]	221 [ 8.9 ]	503 [ -8.5 ]	1,509 [ 19.2 ]	
中部圏 [前月比]		7,425 [ 4.5 ]	4,917 [ 7.2 ]	275 [ 4.6 ]	418 [ 0.5 ]	313 [ -10.1 ]	1,502 [ 0.8 ]	
近畿圏 [前月比]		104,191 [ -0.3 ]	82,037 [ -0.2 ]	5,030 [ -1.8 ]	881 [ -0.3 ]	2,735 [ -2.6 ]	13,508 [ -0.1 ]	
中国 [前月比]		9,889 [ 3.0 ]	6,081 [ -1.4 ]	1,009 [ 0.5 ]	240 [ 7.1 ]	358 [ 3.5 ]	2,201 [ 18.6 ]	
四国 [前月比]		2,407 [ 0.9 ]	1,429 [ -0.8 ]	247 [ 1.2 ]	94 [ -2.1 ]	135 [ 1.5 ]	502 [ 6.6 ]	
九州 [前月比]		20,772 [ 0.2 ]	14,980 [ 0.2 ]	1,035 [ -4.5 ]	493 [ 4.4 ]	681 [ 0.3 ]	3,583 [ 0.8 ]	