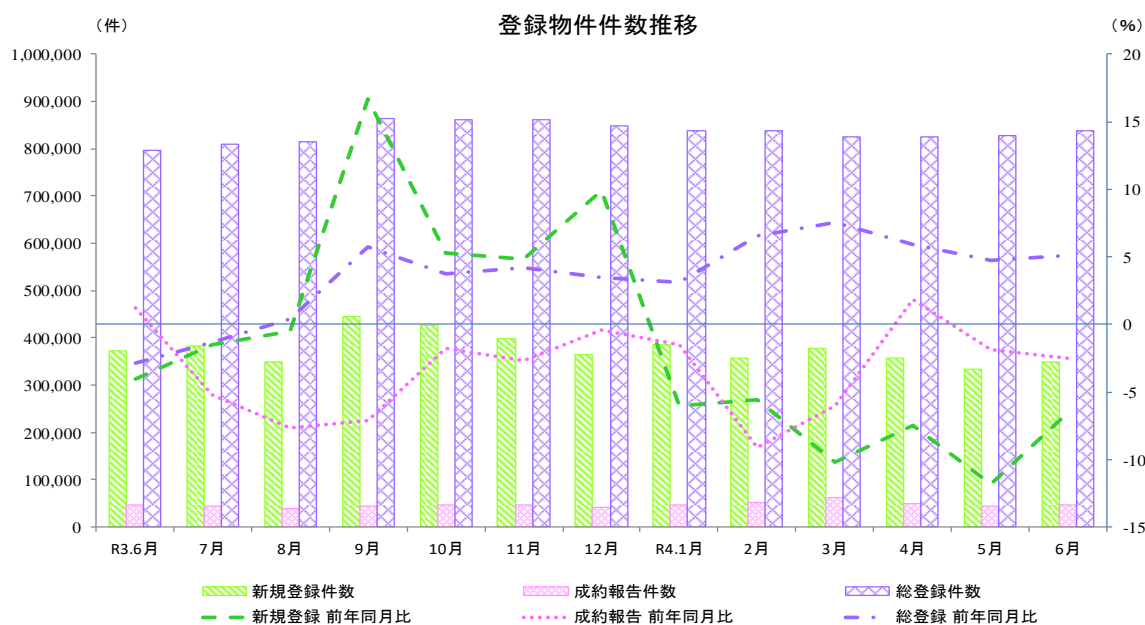


## 指定流通機構の活用状況について（令和4年6月分）

### 1. 概況

令和4年6月の指定流通機構の活用状況をみると、新規登録件数は349,131件と前年同月比で6ヶ月連続してマイナスとなり、前月比では3ヶ月ぶりにプラスに転じた。成約報告件数は45,930件と前年同月比で2ヶ月連続してマイナスとなり、前月比では3ヶ月ぶりにプラスに転じた。総登録件数は836,832件と前年同月比で11ヶ月連続してプラスとなり、前月比では2ヶ月連続してプラスとなった。



#### 物件件数の推移

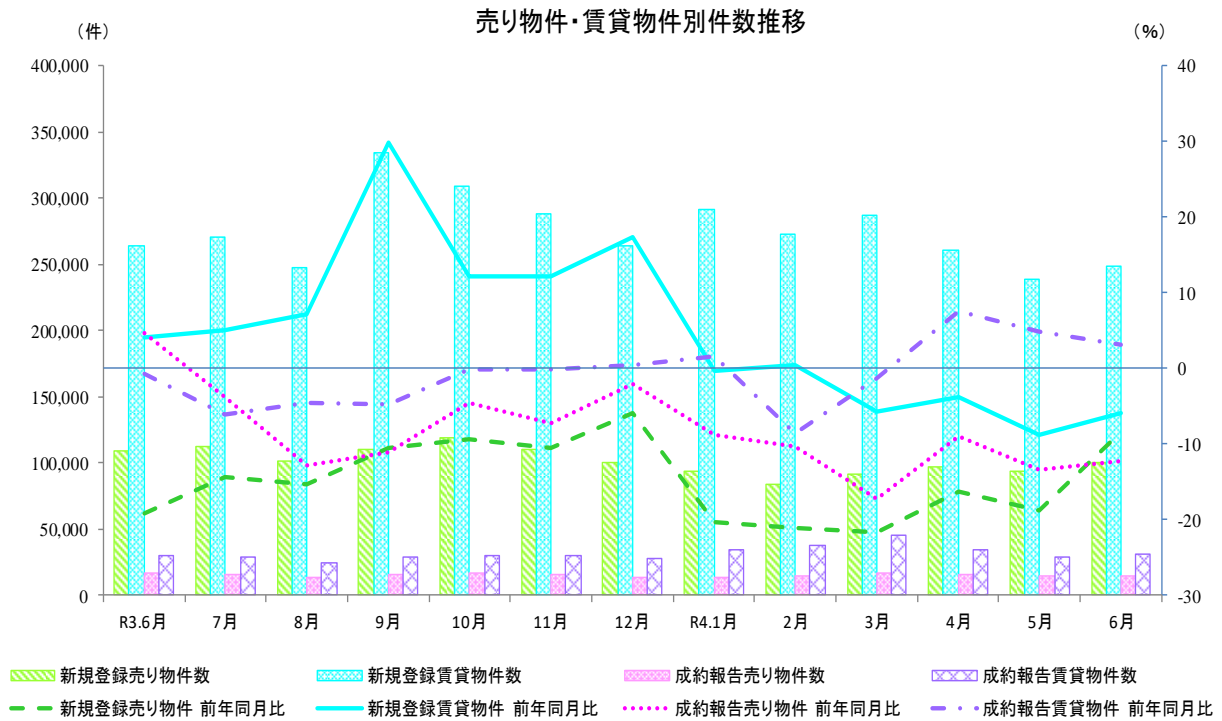
	R3.6月	7月	8月	9月	10月	11月	12月	R4.1月	2月	3月	4月	5月	6月
新規登録件数(件)	373,741	382,307	349,286	445,036	427,604	398,228	365,158	385,517	357,213	378,723	357,811	332,763	349,131
前年同月比(%)	▲4.0	▲1.5	▲0.5	16.7	5.3	4.8	9.9	▲6.0	▲5.6	▲10.2	▲7.5	▲11.8	▲6.6
前月比(%)	▲1.0	2.3	▲8.6	27.4	▲3.9	▲6.9	▲8.3	5.6	▲7.3	6.0	▲5.5	▲7.0	4.9
成約報告件数(件)	47,095	44,222	38,827	44,537	46,857	45,451	41,400	47,718	52,704	62,418	49,822	43,635	45,930
前年同月比(%)	1.2	▲5.2	▲7.7	▲7.1	▲1.7	▲2.7	▲0.4	▲1.5	▲9.1	▲6.1	1.9	▲1.9	▲2.5
前月比(%)	5.9	▲6.1	▲12.2	14.7	5.2	▲3.0	▲8.9	15.3	10.4	18.4	▲20.2	▲12.4	5.3
総登録件数(件)	796,440	808,898	814,480	863,991	861,322	862,294	849,180	838,799	838,038	825,903	823,907	827,328	836,832
前年同月比(%)	▲2.9	▲1.3	0.3	5.7	3.7	4.2	3.5	3.1	6.5	7.6	5.9	4.7	5.1
前月比(%)	0.8	1.6	0.7	6.1	▲0.3	0.1	▲1.5	▲1.2	▲0.1	▲1.4	▲0.2	0.4	1.1

※ 公益社団法人西日本不動産流通機構より、中国、四国、九州の平成31年4月から令和3年12月まで（以下「対象期間」といいます。）の新規登録件数について確認を行っているとの連絡を受けております。対象期間のこれらの地域及び全国合計の新規登録件数、並びにこの件数を用いて算出されている前年比の数値のご利用に当たってはご注意ください。

## 2. 売り・賃貸別物件数

令和4年6月の売り物件数をみると、新規登録件数は100,117件と前年同月比で27ヶ月連続してマイナスとなり、前月比ではふたたびプラスに転じた。成約報告件数は14,971件と前年同月比で12ヶ月連続してマイナスとなり、前月比では3ヶ月ぶりにプラスに転じた。総登録件数は298,113件と前年同月比で24ヶ月ぶりにプラスに転じ、前月比では2ヶ月連続してプラスとなった。

令和4年6月の賃貸物件数をみると、新規登録件数は249,014件と前年同月比で4ヶ月連続してマイナスとなり、前月比では3ヶ月ぶりにプラスに転じた。成約報告件数は30,959件と前年同月比で3ヶ月連続してプラスとなり、前月比では3ヶ月ぶりにプラスに転じた。総登録件数は538,719件と前年同月比で25ヶ月連続してプラスとなり、前月比では3ヶ月連続してプラスとなった。



### R4年6月 売り物件・賃貸物件別件数

<b>新規登録件数</b>	349,131 件	前年同月比	▲ 6.6 %	👇	前月比	4.9 %	👉
売り物件	100,117 件	前年同月比	▲ 8.5 %	👇	前月比	6.7 %	👉
賃貸物件	249,014 件	前年同月比	▲ 5.8 %	👇	前月比	4.2 %	👉
<b>成約報告件数</b>	45,930 件	前年同月比	▲ 2.5 %	➡	前月比	5.3 %	👉
売り物件	14,971 件	前年同月比	▲ 12.3 %	👇	前月比	5.3 %	👉
賃貸物件	30,959 件	前年同月比	3.1 %	👉	前月比	5.2 %	👉
<b>総登録件数</b>	836,832 件	前年同月比	5.1 %	👉	前月比	1.1 %	➡
売り物件	298,113 件	前年同月比	2.5 %	➡	前月比	1.1 %	➡
賃貸物件	538,719 件	前年同月比	6.5 %	👉	前月比	1.17 %	➡

凡例: 📈 10% ~    📊 3% ~ 10%    ➡ -3% ~ 3%    👇 -10% ~ -3%    📉 ~ -10%

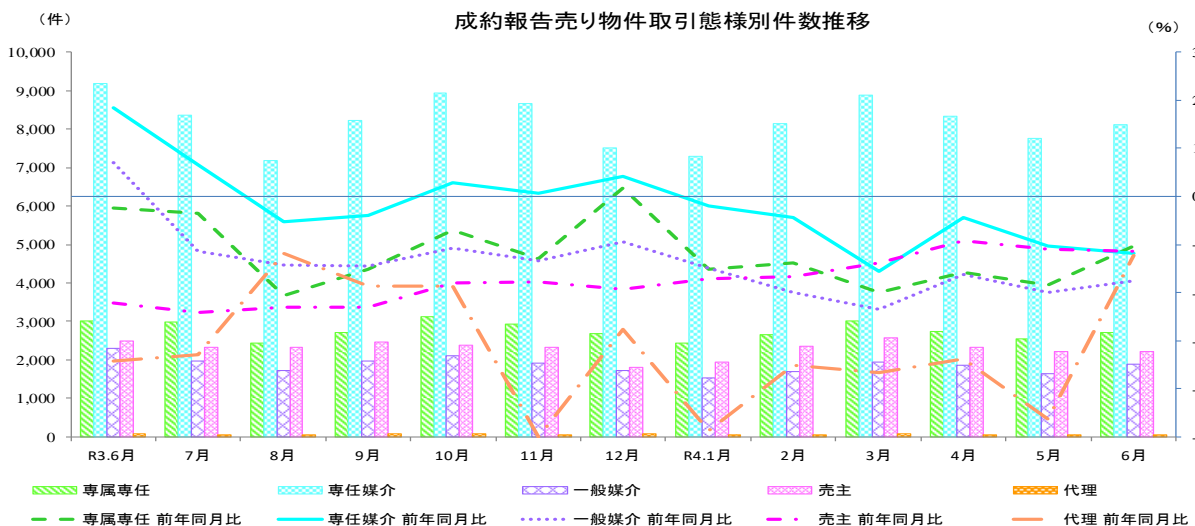
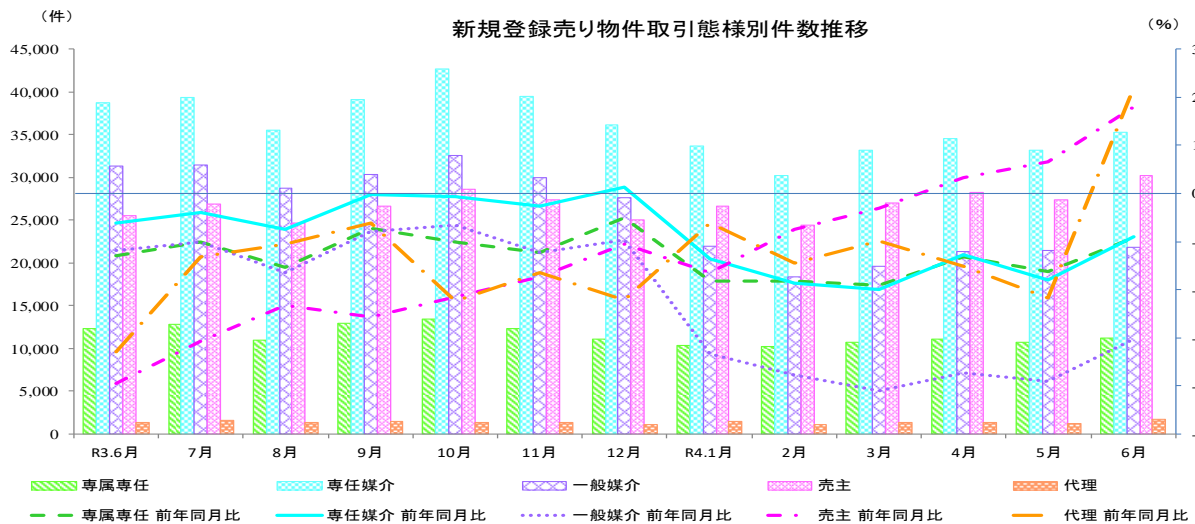
### 3. 売り物件の取引態様別物件数

令和4年6月の新規登録売り物件の取引態様別をみると、専任媒介は35.3%を占め、次いで売主は30.1%を占めている。成約報告売り物件の取引態様別をみると、専任媒介は54.2%を占め、次いで専属専任は18.0%を占めている。

R4年6月 売り物件の取引態様別件数

	取引態様	件数	構成比	前年同月比	前月比
新規登録件数	媒介契約	68,282 件	68.2 %	▲ 17.2 %	↓ 4.5 %
	専属専任	11,172 件	11.2 %	▲ 9.2 %	↓ 4.1 %
	専任媒介	35,292 件	35.3 %	▲ 9.0 %	↓ 6.3 %
	一般媒介	21,818 件	21.8 %	▲ 30.4 %	↓ 1.9 %
	売主	30,170 件	30.1 %	17.9 %	↑ 10.3 %
	代理	1,665 件	1.7 %	21.9 %	↑ 38.3 %
成約報告件数	媒介契約	12,702 件	84.8 %	▲ 12.5 %	↓ 6.3 %
	専属専任	2,698 件	18.0 %	▲ 10.3 %	↓ 6.1 %
	専任媒介	8,107 件	54.2 %	▲ 11.9 %	↓ 4.4 %
	一般媒介	1,897 件	12.7 %	▲ 17.6 %	↑ 15.7 %
	売主	2,212 件	14.8 %	▲ 11.5 %	▲ 0.6 %
	代理	57 件	0.4 %	▲ 12.3 %	↑ 32.6 %

凡例: ↑ 10% ~    ↓ 3% ~ 10%    → -3% ~ 3%    ↘ -10% ~ -3%    ↓ ~ -10%



## 指定流通機構実態調査集計、総括表 新規登録件数

		総 数	物 件 種 別				
			マンション	一 戸 建	土 地	住宅外全部	住宅外一部
全 総計件数		349,131	256,313	37,963	27,266	7,944	19,645
[前月比]		[ 4.9 ]	[ 5.0 ]	[ 4.1 ]	[ 3.5 ]	[ 7.1 ]	[ 6.9 ]
売 地	総 計	100,117	36,102	31,653	26,476	5,414	472
	[前月比]	[ 6.7 ]	[ 8.8 ]	[ 6.5 ]	[ 3.6 ]	[ 10.5 ]	[ -2.9 ]
	北海道	3,695	1,066	1,020	1,299	300	10
	[前月比]	[ 21.5 ]	[ 20.3 ]	[ 29.3 ]	[ 14.8 ]	[ 33.9 ]	[ 11.1 ]
	東北	3,728	739	1,275	1,453	255	6
	[前月比]	[ 6.7 ]	[ 24.0 ]	[ -10.7 ]	[ 16.8 ]	[ 25.0 ]	[ -73.9 ]
	関東甲信越	6,788	519	2,618	3,276	357	18
	[前月比]	[ 15.3 ]	[ 9.7 ]	[ 9.8 ]	[ 22.1 ]	[ 8.5 ]	[ -14.3 ]
	首都圏	45,127	23,116	12,036	7,176	2,479	320
	[前月比]	[ 11.0 ]	[ 11.0 ]	[ 11.2 ]	[ 10.9 ]	[ 11.9 ]	[ 4.2 ]
	中部4県	4,068	476	1,437	1,900	247	8
	[前月比]	[ -0.4 ]	[ -1.4 ]	[ 6.5 ]	[ -6.7 ]	[ 18.2 ]	[ 0.0 ]
	中部圏	7,532	1,712	2,808	2,646	353	13
	[前月比]	[ 6.0 ]	[ 6.5 ]	[ 7.0 ]	[ 4.7 ]	[ 5.4 ]	[ -13.3 ]
	近畿圏	16,429	5,623	6,051	3,975	712	68
	[前月比]	[ 2.5 ]	[ 2.1 ]	[ 1.1 ]	[ 5.6 ]	[ 3.2 ]	[ -19.0 ]
	中国	4,003	561	1,440	1,820	173	9
	[前月比]	[ -1.9 ]	[ 8.5 ]	[ -1.6 ]	[ -4.6 ]	[ -8.5 ]	[ 125.0 ]
	四国	1,262	186	417	561	93	5
	[前月比]	[ -35.1 ]	[ -6.5 ]	[ -1.2 ]	[ -54.4 ]	[ -3.1 ]	[ - ]
九州	7,485	2,104	2,551	2,370	445	15	
[前月比]	[ -0.9 ]	[ 0.1 ]	[ 3.8 ]	[ -7.8 ]	[ 8.8 ]	[ 0.0 ]	
取 引 態 様 別	専属専任	11,172	4,385	2,992	2,945	803	47
	[前月比]	[ 4.1 ]	[ 5.9 ]	[ 0.2 ]	[ 3.7 ]	[ 12.9 ]	[ -4.1 ]
	専任媒介	35,292	12,346	10,327	10,687	1,766	166
	[前月比]	[ 6.3 ]	[ 5.1 ]	[ 7.6 ]	[ 6.5 ]	[ 8.0 ]	[ -5.1 ]
	一般媒介	21,818	6,358	6,421	6,989	1,919	131
	[前月比]	[ 1.9 ]	[ 2.7 ]	[ 7.3 ]	[ -4.8 ]	[ 7.5 ]	[ 26.0 ]
売主	30,170	12,118	11,701	5,513	741	97	
[前月比]	[ 10.3 ]	[ 14.7 ]	[ 6.8 ]	[ 8.8 ]	[ 19.5 ]	[ -27.6 ]	
代理	1,665	895	212	342	185	31	
[前月比]	[ 38.3 ]	[ 63.6 ]	[ 3.4 ]	[ 23.0 ]	[ 23.3 ]	[ 29.2 ]	
賃 地	総 計	249,014	220,211	6,310	790	2,530	19,173
	[前月比]	[ 4.2 ]	[ 4.4 ]	[ -6.4 ]	[ 1.8 ]	[ 0.7 ]	[ 7.2 ]
	北海道	2,075	1,947	23	8	13	84
	[前月比]	[ 17.0 ]	[ 14.6 ]	[ 9.5 ]	[ 33.3 ]	[ 62.5 ]	[ 110.0 ]
	東北	5,488	5,144	99	22	44	179
	[前月比]	[ 13.4 ]	[ 13.2 ]	[ 1.0 ]	[ 10.0 ]	[ 63.0 ]	[ 20.1 ]
	関東甲信越	10,057	9,379	219	38	72	349
	[前月比]	[ 16.6 ]	[ 18.5 ]	[ 8.4 ]	[ -9.5 ]	[ -34.5 ]	[ -2.0 ]
	首都圏	177,149	159,381	3,132	280	1,149	13,207
	[前月比]	[ 5.1 ]	[ 4.9 ]	[ -3.1 ]	[ 7.7 ]	[ 3.8 ]	[ 9.1 ]
	中部4県	2,238	1,706	187	39	94	212
	[前月比]	[ -5.1 ]	[ -3.3 ]	[ -0.5 ]	[ -11.4 ]	[ -30.9 ]	[ -6.6 ]
	中部圏	3,169	2,367	104	62	162	474
	[前月比]	[ 36.4 ]	[ 33.2 ]	[ 19.5 ]	[ -18.4 ]	[ 30.6 ]	[ 83.0 ]
	近畿圏	37,998	31,890	1,728	199	754	3,427
	[前月比]	[ -0.1 ]	[ -0.6 ]	[ -6.2 ]	[ 23.6 ]	[ 6.2 ]	[ 5.5 ]
	中国	3,399	2,454	368	35	83	459
	[前月比]	[ -24.3 ]	[ -17.1 ]	[ -36.7 ]	[ -48.5 ]	[ -22.4 ]	[ -40.9 ]
	四国	570	403	59	17	23	68
	[前月比]	[ -33.0 ]	[ -32.5 ]	[ -18.1 ]	[ -48.5 ]	[ -47.7 ]	[ -35.2 ]
九州	6,871	5,540	391	90	136	714	
[前月比]	[ -1.7 ]	[ -3.4 ]	[ -7.1 ]	[ 36.4 ]	[ -2.9 ]	[ 13.7 ]	

\* 前月比欄の数値は、対前月増減率である。

\* 「関東甲信越」は、茨城県・栃木県・群馬県・新潟県・山梨県・長野県、「首都圏」は、東京都・千葉県・埼玉県・神奈川県、「中部圏」は、愛知県・岐阜県・三重県、「中部4県」は、富山県・石川県・福井県・静岡県、「近畿圏」は、大阪府・京都府・兵庫県・滋賀県・奈良県・和歌山県をいう。

指定流通機構実態調査 売り物件・新規登録件数 時系列表

	3年6月	3年7月	3年8月	3年9月	3年10月	3年11月	3年12月	4年1月	4年2月	4年3月	4年4月	4年5月	4年6月	一年間計
	件数	件数	件数	件数	件数	件数	件数	件数	件数	件数	件数	件数	件数	件数
	(前月比)	(前月比)	(前月比)	(前月比)	(前月比)	(前月比)	(前月比)	(前月比)	(前月比)	(前月比)	(前月比)	(前月比)	(前月比)	(構成比)
	(前年比)	(前年比)	(前年比)	(前年比)	(前年比)	(前年比)	(前年比)	(前年比)	(前年比)	(前年比)	(前年比)	(前年比)	(前年比)	
総数	109,376 (-5.3) [-19.2]	112,052 (2.4) [-14.4]	101,222 (-9.7) [-15.2]	110,620 (9.3) [-10.6]	118,643 (7.3) [-9.4]	110,297 (-7.0) [-10.5]	100,913 (-8.5) [-5.9]	94,030 (-6.8) [-20.3]	84,288 (-10.4) [-21.0]	91,889 (9.0) [-21.7]	96,632 (5.2) [-16.3]	93,871 (-2.9) [-18.7]	100,117 (6.7) [-8.5]	1,214,574
北海道	2,358 (-0.1) [-10.5]	2,693 (14.2) [-11.9]	2,229 (-17.2) [-1.3]	2,625 (17.8) [0.4]	2,809 (7.0) [1.5]	2,513 (-10.5) [1.3]	2,271 (-9.6) [14.5]	2,124 (-6.5) [-4.1]	2,096 (-1.3) [6.4]	2,426 (15.7) [7.0]	2,779 (14.6) [14.3]	3,040 (9.4) [28.8]	3,695 (21.5) [56.7]	31,300 (2.6)
東北	3,046 (6.5) [-13.4]	2,999 (-1.5) [-15.7]	2,734 (-8.8) [-12.2]	3,154 (15.4) [-9.1]	3,394 (7.6) [-11.2]	3,037 (-10.5) [-13.0]	2,804 (-7.7) [-16.4]	2,906 (3.6) [-24.2]	2,687 (-7.5) [-2.2]	2,864 (6.6) [-9.7]	3,498 (22.1) [9.9]	3,494 (-0.1) [22.2]	3,728 (6.7) [22.4]	37,299 (3.1)
関東甲信越	4,686 (-2.4) [-2.1]	4,888 (4.3) [0.6]	4,169 (-14.7) [-5.3]	4,279 (2.6) [-28.2]	5,068 (18.4) [-9.8]	4,529 (-10.6) [-10.7]	4,052 (-10.5) [0.8]	5,034 (24.2) [-4.8]	4,294 (-14.7) [1.3]	5,167 (20.3) [9.9]	5,676 (9.9) [2.2]	5,889 (3.8) [22.6]	6,788 (15.3) [44.9]	59,833 (4.9)
首都圏	34,714 (0.2) [-33.6]	37,069 (6.8) [-23.9]	32,003 (-13.7) [-17.8]	36,294 (13.4) [-17.5]	39,851 (9.8) [-14.9]	37,450 (-6.0) [-11.9]	33,328 (-11.0) [-1.5]	37,049 (11.2) [-3.3]	37,596 (1.5) [4.7]	40,743 (8.4) [7.1]	43,251 (6.2) [13.9]	40,643 (-6.0) [17.3]	45,127 (11.0) [30.0]	460,404 (37.9)
中部4県	4,834 (-32.9) [25.7]	3,804 (-21.3) [1.4]	3,738 (-1.7) [11.7]	4,044 (8.2) [-1.1]	4,013 (-0.8) [-7.7]	3,738 (-6.9) [-8.1]	3,145 (-15.9) [-11.8]	3,836 (22.0) [-20.4]	3,133 (-18.3) [-16.5]	3,771 (20.4) [-15.2]	4,151 (10.1) [-28.6]	4,086 (-1.6) [-43.3]	4,068 (-0.4) [-15.8]	45,527 (3.7)
中部圏	6,737 (-5.0) [-13.4]	6,599 (-2.0) [-9.8]	6,085 (-7.8) [-12.7]	6,836 (12.3) [-11.2]	7,029 (2.8) [-9.7]	6,686 (-4.9) [-9.3]	5,943 (-11.1) [-7.7]	7,190 (21.0) [-4.4]	6,741 (-6.2) [6.1]	7,354 (9.1) [2.6]	7,652 (4.1) [5.6]	7,108 (-7.1) [0.3]	7,532 (6.0) [11.8]	82,755 (6.8)
近畿圏	18,108 (-0.8) [-19.8]	18,620 (2.8) [-10.2]	16,485 (-11.5) [-15.2]	18,691 (13.4) [-10.4]	19,961 (6.8) [-8.5]	17,554 (-12.1) [-10.5]	16,311 (-7.1) [-9.5]	17,301 (6.1) [-11.0]	15,742 (-9.0) [-16.1]	17,115 (8.7) [-15.4]	16,728 (-2.3) [-11.0]	16,032 (-4.2) [-12.2]	16,429 (2.5) [-9.3]	206,969 (17.0)
中国	6,852 (-6.3) [-2.1]	6,967 (1.7) [-8.4]	6,356 (-8.8) [-13.1]	6,594 (3.7) [-2.0]	7,863 (19.2) [4.4]	7,003 (-10.9) [2.0]	6,855 (-2.1) [1.8]	3,613 (-47.3) [-49.4]	2,940 (-18.6) [-54.2]	3,383 (15.1) [-58.1]	3,985 (17.8) [-41.0]	4,080 (2.4) [-44.2]	4,003 (-1.9) [-41.6]	63,642 (5.2)
四国	3,948 (-23.9) [1.0]	3,874 (-1.9) [4.8]	4,185 (8.0) [-18.1]	3,780 (-9.7) [-1.1]	3,892 (3.0) [-3.6]	4,380 (12.5) [0.2]	3,485 (-20.4) [-5.0]	4,361 (25.1) [21.9]	1,726 (-60.4) [-57.0]	1,358 (-21.3) [-65.3]	1,192 (-12.2) [-71.0]	1,946 (63.3) [-62.5]	1,282 (-35.1) [-68.0]	35,441 (2.9)
九州	24,093 (-6.6) [-11.0]	24,539 (1.9) [-11.0]	23,238 (-5.3) [-18.6]	24,323 (4.7) [-1.1]	24,763 (1.8) [-5.6]	23,407 (-5.5) [-15.3]	22,719 (-2.9) [-11.2]	10,616 (-53.3) [-58.9]	7,333 (-30.9) [-67.5]	7,708 (5.1) [-69.6]	7,720 (0.2) [-68.4]	7,553 (-2.2) [-70.7]	7,485 (-0.9) [-68.9]	191,404 (15.8)
取	12,298 (-3.9) [-12.9]	12,834 (4.4) [-10.0]	10,920 (-14.9) [-15.3]	12,949 (18.6) [-7.3]	13,414 (3.6) [-10.1]	12,259 (-8.6) [-12.3]	11,028 (-10.0) [-5.0]	10,292 (-6.7) [-18.1]	10,191 (-1.0) [-18.1]	10,762 (5.6) [-19.2]	11,134 (3.5) [-13.2]	10,728 (-3.6) [-16.2]	11,172 (4.1) [-9.2]	137,683 (11.3)
引	38,777 (-4.1) [-6.2]	39,326 (1.4) [-3.9]	35,511 (-9.7) [-7.6]	39,166 (10.3) [-0.3]	42,661 (8.9) [-0.6]	39,442 (-7.5) [-2.7]	36,129 (-8.4) [1.3]	33,737 (-6.6) [-13.5]	30,279 (-10.2) [-18.7]	33,251 (9.8) [-19.9]	34,550 (3.9) [-12.7]	33,191 (-3.9) [-17.9]	35,292 (6.3) [-9.0]	432,535 (35.6)
態	31,349 (-10.8) [-11.8]	31,423 (0.2) [-10.1]	28,797 (-8.4) [-16.5]	30,367 (5.5) [-7.9]	32,602 (7.4) [-6.6]	29,950 (-8.1) [-8.3]	27,603 (-7.8) [-9.6]	22,006 (-20.3) [-33.4]	18,366 (-16.5) [-37.7]	19,581 (6.6) [-41.1]	21,333 (8.9) [-37.3]	21,403 (0.3) [-39.1]	21,818 (1.9) [-30.4]	305,249 (25.1)
別	25,586 (-0.2) [-39.6]	26,928 (5.2) [-30.8]	24,635 (-8.5) [-23.3]	26,695 (8.4) [-25.7]	28,628 (7.2) [-21.6]	27,355 (-4.4) [-17.3]	25,070 (-8.4) [-10.4]	26,599 (6.1) [-16.4]	24,383 (-8.3) [-7.4]	26,987 (10.7) [-3.2]	28,265 (4.7) [3.2]	27,345 (-3.3) [6.7]	30,170 (10.3) [17.9]	323,060 (26.6)
代理	1,366 (-11.2) [-32.9]	1,541 (12.8) [-13.2]	1,359 (-11.8) [-10.6]	1,443 (6.2) [-6.2]	1,338 (-7.3) [-22.3]	1,291 (-3.5) [-16.4]	1,083 (-16.1) [-22.1]	1,396 (28.9) [-6.2]	1,069 (-23.4) [-14.4]	1,308 (22.4) [-15.3]	1,350 (3.2) [-9.8]	1,204 (-10.8) [-21.8]	1,665 (38.3) [21.9]	16,047 (1.3)
物	32,724 (-1.5) [-20.9]	34,919 (6.7) [-12.4]	30,990 (-11.3) [-11.8]	34,581 (11.6) [-11.1]	37,711 (9.1) [-6.6]	35,200 (-6.7) [-6.0]	32,223 (-8.5) [-4.1]	33,376 (3.6) [-6.9]	32,020 (-4.1) [-4.2]	35,295 (10.2) [-1.7]	35,321 (0.1) [2.1]	33,193 (-6.0) [-0.1]	36,102 (8.8) [10.3]	410,931 (33.8)
件	35,980 (-4.9) [-20.8]	35,929 (-0.1) [-16.0]	31,988 (-11.0) [-17.1]	35,686 (11.6) [-9.0]	38,691 (8.4) [-7.5]	35,261 (-8.9) [-9.5]	32,328 (-8.3) [-4.5]	29,985 (-7.2) [-21.6]	25,760 (-14.1) [-24.3]	28,487 (10.6) [-19.6]	30,430 (6.8) [-19.6]	29,729 (-2.3) [-21.4]	31,653 (6.5) [-12.0]	385,927 (31.8)
種	34,321 (-10.2) [-18.3]	34,863 (1.6) [-16.1]	32,424 (-7.0) [-18.3]	34,272 (5.7) [-12.8]	35,524 (3.7) [-15.6]	33,796 (-4.9) [-16.6]	30,942 (-8.4) [-9.4]	25,142 (-18.7) [-33.4]	21,558 (-14.3) [-35.8]	22,541 (4.6) [-39.3]	25,222 (11.9) [-31.1]	25,562 (1.3) [-33.1]	26,476 (3.6) [-22.9]	348,322 (28.7)
別	5,797 (1.6) [-4.1]	5,819 (0.4) [-5.5]	5,424 (-6.8) [-1.1]	5,559 (2.5) [-3.4]	6,149 (10.6) [0.8]	5,447 (-11.4) [-7.1]	4,934 (-9.4) [-4.7]	4,954 (0.4) [-10.7]	4,463 (-9.9) [-14.2]	5,004 (12.1) [-15.7]	5,151 (2.9) [-10.7]	4,901 (-4.9) [-14.1]	5,414 (10.5) [-6.6]	63,219 (5.2)
住宅外(一部)	554 (3.6) [3.2]	522 (-5.8) [1.4]	396 (-24.1) [-21.4]	522 (31.8) [2.8]	568 (8.8) [-1.2]	593 (4.4) [13.0]	486 (-18.0) [8.2]	573 (17.9) [-2.7]	487 (-15.0) [-6.2]	562 (15.4) [-4.3]	508 (-9.6) [-10.4]	486 (-4.3) [-9.2]	472 (-2.9) [-14.8]	6,175 (0.5)

※ 構成比は、四捨五入による端数処理のため内数の合計が100%にならないことがある

指定流通機構実態調査集計、総括表 地域別取引態様別売物件月間新規登録件数

地域	取引態様	総数	物件種別				
			マンション	一戸建	土地	住宅外全部	住宅外一部
北海道	専属専任 [構成比]	345 [ 9.3]	97 [ 9.1]	91 [ 8.9]	120 [ 9.2]	35 [ 11.7]	2 [ 20.0]
	専任媒介 [構成比]	1,932 [ 52.3]	424 [ 39.8]	606 [ 59.4]	744 [ 57.3]	153 [ 51.0]	5 [ 50.0]
	一般媒介 [構成比]	756 [ 20.5]	144 [ 13.5]	202 [ 19.8]	313 [ 24.1]	94 [ 31.3]	3 [ 30.0]
	売主 [構成比]	636 [ 17.2]	387 [ 36.3]	120 [ 11.8]	116 [ 8.9]	13 [ 4.3]	0 [ 0.0]
	代理 [構成比]	26 [ 0.7]	14 [ 1.3]	1 [ 0.1]	6 [ 0.5]	5 [ 1.7]	0 [ 0.0]
	合計 [地域比]	3,695 [ 3.7]	1,066 [ 3.0]	1,020 [ 3.2]	1,299 [ 4.9]	300 [ 5.5]	10 [ 2.1]
東北	専属専任 [構成比]	279 [ 7.5]	60 [ 8.1]	71 [ 5.6]	112 [ 7.7]	35 [ 13.7]	1 [ 16.7]
	専任媒介 [構成比]	1,509 [ 40.5]	299 [ 40.5]	486 [ 38.1]	646 [ 44.5]	77 [ 30.2]	1 [ 16.7]
	一般媒介 [構成比]	1,058 [ 28.4]	150 [ 20.3]	314 [ 24.6]	474 [ 32.6]	120 [ 47.1]	0 [ 0.0]
	売主 [構成比]	861 [ 23.1]	229 [ 31.0]	393 [ 30.8]	216 [ 14.9]	21 [ 8.2]	2 [ 33.3]
	代理 [構成比]	21 [ 0.6]	1 [ 0.1]	11 [ 0.9]	5 [ 0.3]	2 [ 0.8]	2 [ 33.3]
	合計 [地域比]	3,728 [ 3.7]	739 [ 2.0]	1,275 [ 4.0]	1,453 [ 5.5]	255 [ 4.7]	6 [ 1.3]
関東甲信越	専属専任 [構成比]	367 [ 5.4]	30 [ 5.8]	99 [ 3.8]	168 [ 5.1]	68 [ 19.0]	2 [ 11.1]
	専任媒介 [構成比]	2,165 [ 31.9]	227 [ 43.7]	713 [ 27.2]	1,124 [ 34.3]	92 [ 25.8]	9 [ 50.0]
	一般媒介 [構成比]	2,536 [ 37.4]	194 [ 37.4]	969 [ 37.0]	1,230 [ 37.5]	136 [ 38.1]	7 [ 38.9]
	売主 [構成比]	1,655 [ 24.4]	66 [ 12.7]	829 [ 31.7]	705 [ 21.5]	55 [ 15.4]	0 [ 0.0]
	代理 [構成比]	65 [ 1.0]	2 [ 0.4]	8 [ 0.3]	49 [ 1.5]	6 [ 1.7]	0 [ 0.0]
	合計 [地域比]	6,788 [ 6.8]	519 [ 1.4]	2,618 [ 8.3]	3,276 [ 12.4]	357 [ 6.6]	18 [ 3.8]
首都圏	専属専任 [構成比]	4,877 [ 10.8]	2,736 [ 11.8]	845 [ 7.0]	912 [ 12.7]	352 [ 14.2]	32 [ 10.0]
	専任媒介 [構成比]	14,444 [ 32.0]	6,816 [ 29.5]	3,874 [ 32.2]	2,927 [ 40.8]	728 [ 29.4]	99 [ 30.9]
	一般媒介 [構成比]	5,931 [ 13.1]	3,038 [ 13.1]	1,200 [ 10.0]	851 [ 11.9]	765 [ 30.9]	77 [ 24.1]
	売主 [構成比]	18,663 [ 41.4]	9,767 [ 42.3]	5,992 [ 49.8]	2,328 [ 32.4]	490 [ 19.8]	86 [ 26.9]
	代理 [構成比]	1,212 [ 2.7]	759 [ 3.3]	125 [ 1.0]	158 [ 2.2]	144 [ 5.8]	26 [ 8.1]
	合計 [地域比]	45,127 [ 45.1]	23,116 [ 64.0]	12,036 [ 38.0]	7,176 [ 27.1]	2,479 [ 45.8]	320 [ 67.8]
中部四県	専属専任 [構成比]	465 [ 11.4]	34 [ 7.1]	140 [ 9.7]	248 [ 13.1]	43 [ 17.4]	0 [ 0.0]
	専任媒介 [構成比]	1,571 [ 38.6]	226 [ 47.5]	471 [ 32.8]	790 [ 41.6]	79 [ 32.0]	5 [ 62.5]
	一般媒介 [構成比]	1,317 [ 32.4]	164 [ 34.5]	436 [ 30.3]	611 [ 32.2]	103 [ 41.7]	3 [ 37.5]
	売主 [構成比]	669 [ 16.4]	45 [ 9.5]	386 [ 26.9]	218 [ 11.5]	20 [ 8.1]	0 [ 0.0]
	代理 [構成比]	46 [ 1.1]	7 [ 1.5]	4 [ 0.3]	33 [ 1.7]	2 [ 0.8]	0 [ 0.0]
	合計 [地域比]	4,068 [ 4.1]	476 [ 1.3]	1,437 [ 4.5]	1,900 [ 7.2]	247 [ 4.6]	8 [ 1.7]
中部圏	専属専任 [構成比]	636 [ 8.4]	217 [ 12.7]	159 [ 5.7]	215 [ 8.1]	45 [ 12.7]	0 [ 0.0]
	専任媒介 [構成比]	2,571 [ 34.1]	699 [ 40.8]	709 [ 25.2]	1,028 [ 38.9]	128 [ 36.3]	7 [ 53.8]
	一般媒介 [構成比]	1,978 [ 26.3]	411 [ 24.0]	459 [ 16.3]	957 [ 36.2]	146 [ 41.4]	5 [ 38.5]
	売主 [構成比]	2,334 [ 31.0]	380 [ 22.2]	1,481 [ 52.7]	440 [ 16.6]	32 [ 9.1]	1 [ 7.7]
	代理 [構成比]	13 [ 0.2]	5 [ 0.3]	0 [ 0.0]	6 [ 0.2]	2 [ 0.6]	0 [ 0.0]
	合計 [地域比]	7,532 [ 7.5]	1,712 [ 4.7]	2,808 [ 8.9]	2,646 [ 10.0]	353 [ 6.5]	13 [ 2.8]
近畿圏	専属専任 [構成比]	3,202 [ 19.5]	980 [ 17.4]	1,328 [ 21.9]	756 [ 19.0]	131 [ 18.4]	7 [ 10.3]
	専任媒介 [構成比]	5,819 [ 35.4]	2,301 [ 40.9]	1,854 [ 30.6]	1,420 [ 35.7]	216 [ 30.3]	28 [ 41.2]
	一般媒介 [構成比]	3,850 [ 23.4]	1,378 [ 24.5]	1,258 [ 20.8]	916 [ 23.0]	273 [ 38.3]	25 [ 36.8]
	売主 [構成比]	3,338 [ 20.3]	876 [ 15.6]	1,556 [ 25.7]	828 [ 20.8]	73 [ 10.3]	5 [ 7.4]
	代理 [構成比]	220 [ 1.3]	88 [ 1.6]	55 [ 0.9]	55 [ 1.4]	19 [ 2.7]	3 [ 4.4]
	合計 [地域比]	16,429 [ 16.4]	5,623 [ 15.6]	6,051 [ 19.1]	3,975 [ 15.0]	712 [ 13.2]	68 [ 14.4]
中国	専属専任 [構成比]	251 [ 6.3]	26 [ 4.6]	89 [ 6.2]	119 [ 6.5]	17 [ 9.8]	0 [ 0.0]
	専任媒介 [構成比]	1,842 [ 46.0]	333 [ 59.4]	654 [ 45.4]	778 [ 42.7]	71 [ 41.0]	6 [ 66.6]
	一般媒介 [構成比]	1,313 [ 32.8]	140 [ 25.0]	498 [ 34.6]	601 [ 33.0]	72 [ 41.6]	2 [ 22.2]
	売主 [構成比]	594 [ 14.8]	62 [ 11.1]	199 [ 13.8]	319 [ 17.5]	13 [ 7.5]	1 [ 11.1]
	代理 [構成比]	3 [ 0.1]	0 [ 0.0]	0 [ 0.0]	3 [ 0.2]	0 [ 0.0]	0 [ 0.0]
	合計 [地域比]	4,003 [ 4.0]	561 [ 1.6]	1,440 [ 4.5]	1,820 [ 6.9]	173 [ 3.2]	9 [ 1.9]
四国	専属専任 [構成比]	155 [ 12.3]	10 [ 5.4]	41 [ 9.8]	90 [ 16.0]	13 [ 14.0]	1 [ 20.0]
	専任媒介 [構成比]	530 [ 42.0]	108 [ 58.1]	156 [ 37.4]	223 [ 39.8]	41 [ 44.1]	2 [ 40.0]
	一般媒介 [構成比]	385 [ 30.5]	55 [ 29.6]	117 [ 28.1]	176 [ 31.4]	35 [ 37.6]	2 [ 40.0]
	売主 [構成比]	179 [ 14.2]	12 [ 6.5]	101 [ 24.2]	63 [ 11.2]	3 [ 3.2]	0 [ 0.0]
	代理 [構成比]	13 [ 1.0]	1 [ 0.5]	2 [ 0.5]	9 [ 1.6]	1 [ 1.1]	0 [ 0.0]
	合計 [地域比]	1,262 [ 1.3]	186 [ 0.5]	417 [ 1.3]	561 [ 2.1]	93 [ 1.7]	5 [ 1.1]
九州	専属専任 [構成比]	595 [ 7.9]	195 [ 9.3]	129 [ 5.1]	205 [ 8.6]	64 [ 14.4]	2 [ 13.3]
	専任媒介 [構成比]	2,909 [ 38.9]	913 [ 43.4]	804 [ 31.5]	1,007 [ 42.5]	181 [ 40.7]	4 [ 26.7]
	一般媒介 [構成比]	2,694 [ 36.0]	684 [ 32.5]	968 [ 37.9]	860 [ 36.3]	175 [ 39.3]	7 [ 46.7]
	売主 [構成比]	1,241 [ 16.6]	294 [ 14.0]	644 [ 25.2]	280 [ 11.8]	21 [ 4.7]	2 [ 13.3]
	代理 [構成比]	46 [ 0.6]	18 [ 0.9]	6 [ 0.2]	18 [ 0.8]	4 [ 0.9]	0 [ 0.0]
	合計 [地域比]	7,485 [ 7.5]	2,104 [ 5.8]	2,551 [ 8.1]	2,370 [ 9.0]	445 [ 8.2]	15 [ 3.2]
全国	専属専任 [構成比]	11,172 [ 11.2]	4,385 [ 12.1]	2,992 [ 9.5]	2,945 [ 11.1]	803 [ 14.8]	47 [ 10.0]
	専任媒介 [構成比]	35,292 [ 35.3]	12,346 [ 34.2]	10,327 [ 32.6]	10,687 [ 40.4]	1,766 [ 32.6]	166 [ 35.2]
	一般媒介 [構成比]	21,818 [ 21.8]	6,358 [ 17.6]	6,421 [ 20.3]	6,989 [ 26.4]	1,919 [ 35.4]	131 [ 27.8]
	売主 [構成比]	30,170 [ 30.1]	12,118 [ 33.6]	11,701 [ 37.0]	5,513 [ 20.8]	741 [ 13.7]	97 [ 20.6]
	代理 [構成比]	1,665 [ 1.7]	895 [ 2.5]	212 [ 0.7]	342 [ 1.3]	185 [ 3.4]	31 [ 6.6]
	合計	100,117	36,102	31,653	26,476	5,414	472

※構成比とは地域内の取引態様別構成比で、地域比とは全国合計の地域別シェアである。

※構成比・地域比は、四捨五入による端数処理のため内数の合計が100%にならないことがある。

## 指定流通機構実態調査集計、総括表 月間成約件数

		総 数	物 件 種 別				
			マンション	一 戸 建	土 地	住宅外全部	住宅外一部
全	総計件数	45,930	33,032	6,488	3,370	703	2,337
	[前月比]	[ 5.3 ]	[ 4.3 ]	[ 3.1 ]	[ 11.3 ]	[ 8.5 ]	[ 18.0 ]
売	総 計	14,971	6,045	5,215	3,294	373	44
	[前月比]	[ 5.3 ]	[ 5.6 ]	[ 1.5 ]	[ 11.1 ]	[ 6.6 ]	[ 12.8 ]
り	北海道	820	238	282	263	34	3
	[前月比]	[ 19.5 ]	[ 16.7 ]	[ 24.2 ]	[ 20.6 ]	[ -2.9 ]	[ 50.0 ]
地	東北	669	155	300	196	18	0
	[前月比]	[ 7.4 ]	[ 2.6 ]	[ 11.1 ]	[ 5.9 ]	[ 5.9 ]	[ - ]
域	関東甲信越	631	76	315	220	20	0
	[前月比]	[ 4.8 ]	[ -6.2 ]	[ -2.8 ]	[ 17.6 ]	[ 150.0 ]	[ -100.0 ]
物	首都圏	5,488	3,022	1,469	834	141	22
	[前月比]	[ 1.1 ]	[ 4.3 ]	[ -6.6 ]	[ 3.1 ]	[ 10.2 ]	[ 10.0 ]
別	中部4県	472	82	215	168	7	0
	[前月比]	[ 7.0 ]	[ 9.3 ]	[ 4.4 ]	[ 13.5 ]	[ -30.0 ]	[ -100.0 ]
件	中部圏	1,294	382	441	425	44	2
	[前月比]	[ 1.4 ]	[ -1.5 ]	[ -3.7 ]	[ 7.6 ]	[ 41.9 ]	[ -50.0 ]
取	近畿圏	3,709	1,515	1,463	668	51	12
	[前月比]	[ 6.0 ]	[ 9.0 ]	[ 3.0 ]	[ 10.0 ]	[ -30.1 ]	[ 50.0 ]
引	中国	536	151	218	150	15	2
	[前月比]	[ 6.3 ]	[ 19.8 ]	[ -6.4 ]	[ 14.5 ]	[ 7.1 ]	[ - ]
態	四国	221	54	100	65	2	0
	[前月比]	[ 38.1 ]	[ 5.9 ]	[ 63.9 ]	[ 51.2 ]	[ -60.0 ]	[ - ]
様	九州	1,131	370	412	305	41	3
	[前月比]	[ 13.7 ]	[ 3.4 ]	[ 13.2 ]	[ 25.5 ]	[ 41.4 ]	[ 200.0 ]
別	専属専任	2,698	1,260	850	520	63	5
	[前月比]	[ 6.1 ]	[ 5.1 ]	[ 2.9 ]	[ 15.3 ]	[ -1.6 ]	[ 150.0 ]
件	専任媒介	8,107	3,610	2,432	1,844	208	13
	[前月比]	[ 4.4 ]	[ 2.7 ]	[ 0.4 ]	[ 13.4 ]	[ 18.9 ]	[ -45.8 ]
取	一般媒介	1,897	649	621	528	87	12
	[前月比]	[ 15.7 ]	[ 15.1 ]	[ 19.0 ]	[ 11.2 ]	[ 14.5 ]	[ 300.0 ]
引	売主	2,212	501	1,296	389	13	13
	[前月比]	[ -0.6 ]	[ 17.9 ]	[ -4.2 ]	[ -3.7 ]	[ -61.8 ]	[ 44.4 ]
態	代理	57	25	16	13	2	1
	[前月比]	[ 32.6 ]	[ 38.9 ]	[ 23.1 ]	[ 30.0 ]	[ 100.0 ]	[ 0.0 ]
件	総 計	30,959	26,987	1,273	76	330	2,293
	[前月比]	[ 5.2 ]	[ 3.9 ]	[ 9.9 ]	[ 24.6 ]	[ 10.7 ]	[ 18.1 ]
賃	北海道	92	72	3	2	6	9
	[前月比]	[ 1.1 ]	[ -10.0 ]	[ -25.0 ]	[ - ]	[ 50.0 ]	[ 200.0 ]
地	東北	306	249	21	2	7	27
	[前月比]	[ 16.3 ]	[ 16.9 ]	[ -25.0 ]	[ -33.3 ]	[ 250.0 ]	[ 58.8 ]
賃	関東甲信越	360	244	43	9	8	56
	[前月比]	[ -3.2 ]	[ -6.9 ]	[ -8.5 ]	[ 125.0 ]	[ 100.0 ]	[ 1.8 ]
物	首都圏	16,893	15,046	486	33	85	1,243
	[前月比]	[ 7.5 ]	[ 6.6 ]	[ 16.3 ]	[ 22.2 ]	[ -18.3 ]	[ 17.5 ]
件	中部4県	288	203	25	2	16	42
	[前月比]	[ 12.9 ]	[ 21.6 ]	[ -24.2 ]	[ - ]	[ 23.1 ]	[ 0.0 ]
別	中部圏	367	317	17	5	8	20
	[前月比]	[ -5.9 ]	[ -8.6 ]	[ 54.5 ]	[ 150.0 ]	[ 0.0 ]	[ -9.1 ]
賃	近畿圏	10,791	9,401	548	16	149	677
	[前月比]	[ 1.4 ]	[ -0.1 ]	[ 9.6 ]	[ -33.3 ]	[ 24.2 ]	[ 16.7 ]
物	中国	283	156	44	1	21	61
	[前月比]	[ 15.5 ]	[ 11.4 ]	[ 0.0 ]	[ 0.0 ]	[ 110.0 ]	[ 22.0 ]
件	四国	64	39	11	0	1	13
	[前月比]	[ 23.1 ]	[ 8.3 ]	[ 83.3 ]	[ - ]	[ -80.0 ]	[ 160.0 ]
別	九州	1,515	1,260	75	6	29	145
	[前月比]	[ 8.3 ]	[ 5.5 ]	[ 11.9 ]	[ - ]	[ 3.6 ]	[ 31.8 ]

\* 成約件数は成約報告のあった件数である。

## 指定流通機構実態調査集計、総括表 当月末総登録件数

		総 数	物 件 種 別				
			マンション	一 戸 建	土 地	住宅外全部	住宅外一部
全	総計件数	836,832	515,862	104,046	120,902	26,274	69,748
	[前月比]	[ 1.1 ]	[ 1.4 ]	[ 1.5 ]	[ 1.1 ]	[ 0.6 ]	[ -0.6 ]
売	総 計	298,113	72,823	89,601	117,000	17,349	1,340
	[前月比]	[ 1.1 ]	[ 0.3 ]	[ 1.9 ]	[ 1.1 ]	[ 1.1 ]	[ -3.5 ]
り	北海道	10,495	1,931	2,858	4,831	853	22
	[前月比]	[ 5.8 ]	[ 3.2 ]	[ 9.2 ]	[ 5.9 ]	[ 0.7 ]	[ -15.4 ]
	東北	13,747	1,462	4,649	6,803	800	33
	[前月比]	[ 0.8 ]	[ 1.0 ]	[ -0.9 ]	[ 1.7 ]	[ 3.1 ]	[ -5.7 ]
	関東甲信越	27,034	1,495	7,419	16,726	1,334	60
	[前月比]	[ -0.4 ]	[ -1.1 ]	[ -0.5 ]	[ -0.1 ]	[ -3.5 ]	[ -6.3 ]
	首都圏	88,317	37,382	24,663	19,526	6,064	682
	[前月比]	[ 0.8 ]	[ 0.4 ]	[ 2.6 ]	[ -0.2 ]	[ -0.2 ]	[ -3.8 ]
	中部4県	18,768	1,405	5,448	10,863	1,015	37
	[前月比]	[ 2.5 ]	[ 3.2 ]	[ 3.6 ]	[ 1.6 ]	[ 4.9 ]	[ 8.8 ]
	中部圏	29,134	4,908	8,503	14,297	1,368	58
	[前月比]	[ 0.9 ]	[ -0.8 ]	[ 1.0 ]	[ 1.3 ]	[ 3.3 ]	[ -7.9 ]
	近畿圏	55,597	15,662	19,782	16,974	2,841	338
	[前月比]	[ 0.0 ]	[ -0.7 ]	[ 0.3 ]	[ -0.2 ]	[ 3.0 ]	[ -3.7 ]
	中国	16,859	1,386	5,391	9,303	759	20
	[前月比]	[ 5.8 ]	[ 5.2 ]	[ 6.3 ]	[ 5.7 ]	[ 5.3 ]	[ 5.3 ]
四国	7,403	649	1,942	4,388	413	11	
[前月比]	[ 0.5 ]	[ 2.4 ]	[ 0.6 ]	[ 0.0 ]	[ 2.5 ]	[ 22.2 ]	
九州	30,759	6,543	8,946	13,289	1,902	79	
[前月比]	[ 1.1 ]	[ 0.3 ]	[ 2.7 ]	[ 0.7 ]	[ 0.1 ]	[ 0.0 ]	
物 別	専属専任	33,999	10,233	9,780	11,845	2,013	128
	[前月比]	[ 0.3 ]	[ -0.1 ]	[ 0.5 ]	[ 0.4 ]	[ 1.3 ]	[ -1.5 ]
	専任媒介	112,936	30,756	31,120	44,728	5,826	506
	[前月比]	[ 1.3 ]	[ 0.6 ]	[ 2.3 ]	[ 1.1 ]	[ 1.5 ]	[ -2.5 ]
	一般媒介	90,098	18,118	21,128	42,909	7,477	466
	[前月比]	[ 0.4 ]	[ -1.5 ]	[ 1.7 ]	[ 0.7 ]	[ 0.2 ]	[ -6.8 ]
売主	57,638	12,681	26,920	16,284	1,561	192	
[前月比]	[ 2.4 ]	[ 2.4 ]	[ 2.2 ]	[ 2.7 ]	[ 3.3 ]	[ -2.0 ]	
代理	3,442	1,035	653	1,234	472	48	
[前月比]	[ -0.6 ]	[ -0.4 ]	[ -1.7 ]	[ -2.1 ]	[ 3.7 ]	[ 9.1 ]	
件	総 計	538,719	443,039	14,445	3,902	8,925	68,408
	[前月比]	[ 1.2 ]	[ 1.6 ]	[ -1.1 ]	[ 0.7 ]	[ -0.5 ]	[ -0.6 ]
賃	北海道	3,323	2,852	76	46	41	308
	[前月比]	[ 6.5 ]	[ 6.8 ]	[ 2.7 ]	[ 0.0 ]	[ -10.9 ]	[ 8.5 ]
	東北	9,044	7,464	295	123	154	1,008
	[前月比]	[ -0.2 ]	[ -0.5 ]	[ 0.0 ]	[ 2.5 ]	[ 4.8 ]	[ 0.9 ]
	関東甲信越	16,383	13,558	540	316	401	1,568
	[前月比]	[ 5.4 ]	[ 6.9 ]	[ 0.4 ]	[ -5.7 ]	[ -5.0 ]	[ 0.2 ]
	首都圏	358,201	304,953	5,294	1,122	3,464	43,368
	[前月比]	[ 0.5 ]	[ 0.8 ]	[ -2.6 ]	[ -0.4 ]	[ -2.0 ]	[ -1.0 ]
	中部4県	7,444	4,901	524	203	550	1,266
	[前月比]	[ 2.3 ]	[ 3.5 ]	[ 1.7 ]	[ -2.9 ]	[ -0.4 ]	[ -0.2 ]
	中部圏	7,102	4,585	263	416	348	1,490
	[前月比]	[ 6.3 ]	[ 8.3 ]	[ -0.4 ]	[ 1.0 ]	[ 4.2 ]	[ 3.8 ]
	近畿圏	104,503	82,170	5,121	884	2,809	13,519
	[前月比]	[ 2.5 ]	[ 3.2 ]	[ -0.6 ]	[ 4.7 ]	[ 2.1 ]	[ -0.2 ]
	中国	9,599	6,169	1,004	224	346	1,856
	[前月比]	[ 7.0 ]	[ 9.5 ]	[ 1.8 ]	[ 0.4 ]	[ 3.9 ]	[ 3.2 ]
四国	2,385	1,441	244	96	133	471	
[前月比]	[ -1.6 ]	[ -0.2 ]	[ -7.9 ]	[ 2.1 ]	[ -4.3 ]	[ -2.5 ]	
九州	20,735	14,946	1,084	472	679	3,554	
[前月比]	[ -2.0 ]	[ -2.2 ]	[ -0.3 ]	[ 1.7 ]	[ -4.4 ]	[ -1.2 ]	