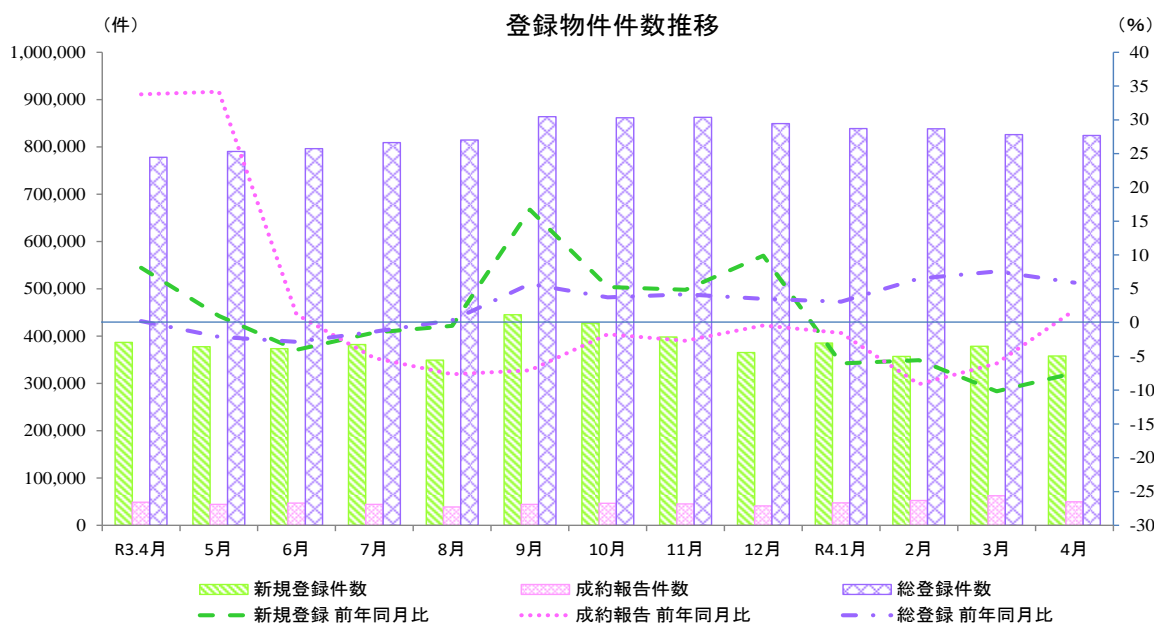


## 指定流通機構の活用状況について（令和4年4月分）

### 1. 概況

令和4年4月の指定流通機構の活用状況をみると、新規登録件数は357,811件と前年同月比で4ヶ月連続してマイナスとなり、前月比ではふたたびマイナスに転じた。成約報告件数は49,822件と前年同月比で10ヶ月ぶりにプラスに転じ、前月比では4ヶ月ぶりにマイナスに転じた。総登録件数は823,907件と前年同月比で9ヶ月連続してプラスとなり、前月比では5ヶ月連続してマイナスとなった。



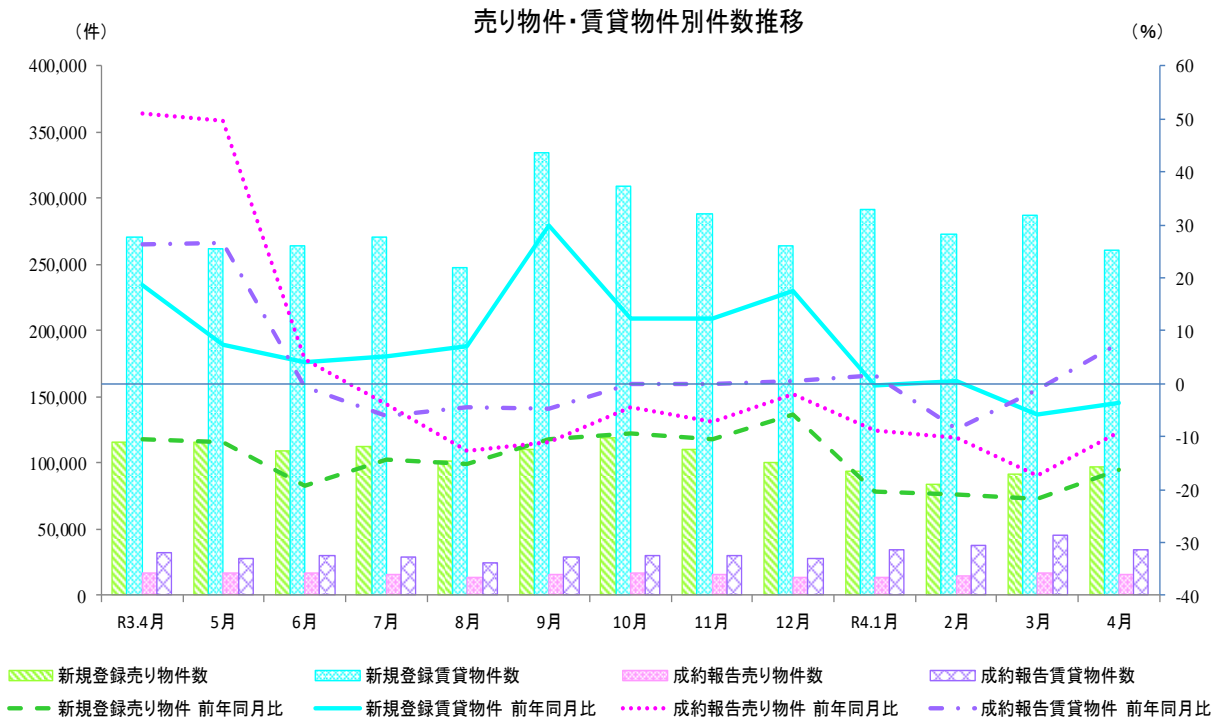
#### 物件件数の推移

	R3.4月	5月	6月	7月	8月	9月	10月	11月	12月	R4.1月	2月	3月	4月
新規登録件数(件)	386,626	377,495	373,741	382,307	349,286	445,036	427,604	398,228	365,158	385,517	357,213	378,723	357,811
前年同月比(%)	8.1	1.0	▲4.0	▲1.5	▲0.5	16.7	5.3	4.8	9.9	▲6.0	▲5.6	▲10.2	▲7.5
前月比(%)	▲8.3	▲2.4	▲1.0	2.3	▲8.6	27.4	▲3.9	▲6.9	▲8.3	5.6	▲7.3	6.0	▲5.5
成約報告件数(件)	48,912	44,460	47,095	44,222	38,827	44,537	46,857	45,451	41,400	47,718	52,704	62,418	49,822
前年同月比(%)	33.8	34.2	1.2	▲5.2	▲7.7	▲7.1	▲1.7	▲2.7	▲0.4	▲1.5	▲9.1	▲6.1	1.9
前月比(%)	▲26.4	▲9.1	5.9	▲6.1	▲12.2	14.7	5.2	▲3.0	▲8.9	15.3	10.4	18.4	▲20.2
総登録件数(件)	777,968	790,248	796,440	808,898	814,480	863,991	861,322	862,294	849,180	838,799	838,038	825,903	823,907
前年同月比(%)	0.2	▲2.1	▲2.9	▲1.3	0.3	5.7	3.7	4.2	3.5	3.1	6.5	7.6	5.9
前月比(%)	1.3	1.6	0.8	1.6	0.7	6.1	▲0.3	0.1	▲1.5	▲1.2	▲0.1	▲1.4	▲0.2

## 2. 売り・賃貸別物件数

令和4年4月の売り物件数をみると、新規登録件数は96,632件と前年同月比で25ヶ月連続してマイナスとなり、前月比では2ヶ月連続してプラスとなった。成約報告件数は15,304件と前年同月比で10ヶ月連続してマイナスとなり、前月比では3ヶ月ぶりにマイナスに転じた。総登録件数は293,855件と前年同月比で22ヶ月連続してマイナスとなり、前月比では2ヶ月連続してマイナスとなった。

令和4年4月の賃貸物件数をみると、新規登録件数は261,179件と前年同月比で2ヶ月連続してマイナスとなり、前月比ではふたたびマイナスに転じた。成約報告件数は34,518件と前年同月比で3ヶ月ぶりにプラスに転じ、前月比では4ヶ月ぶりにマイナスに転じた。総登録件数は530,052件と前年同月比で23ヶ月連続してプラスとなり、前月比では5ヶ月ぶりにプラスに転じた。



### R4年4月 売り物件・賃貸物件別件数

<b>新規登録件数</b>	357,811 件	前年同月比	▲ 7.5 %	👉	前月比	▲ 5.5 %	👉
売り物件	96,632 件	前年同月比	▲ 16.3 %	👇	前月比	5.2 %	👉
賃貸物件	261,179 件	前年同月比	▲ 3.7 %	👉	前月比	▲ 8.9 %	👉
<b>成約報告件数</b>	49,822 件	前年同月比	1.9 %	➡	前月比	▲ 20.2 %	👇
売り物件	15,304 件	前年同月比	▲ 9.1 %	👉	前月比	▲ 7.2 %	👉
賃貸物件	34,518 件	前年同月比	7.6 %	👉	前月比	▲ 24.9 %	👇
<b>総登録件数</b>	823,907 件	前年同月比	5.9 %	👉	前月比	▲ 0.2 %	➡
売り物件	293,855 件	前年同月比	▲ 2.7 %	➡	前月比	▲ 0.7 %	➡
賃貸物件	530,052 件	前年同月比	11.3 %	👆	前月比	0.03 %	➡

凡例: 👆 10% ~    👉 3% ~ 10%    ➡ -3% ~ 3%    👇 -10% ~ -3%    📉 ~ -10%

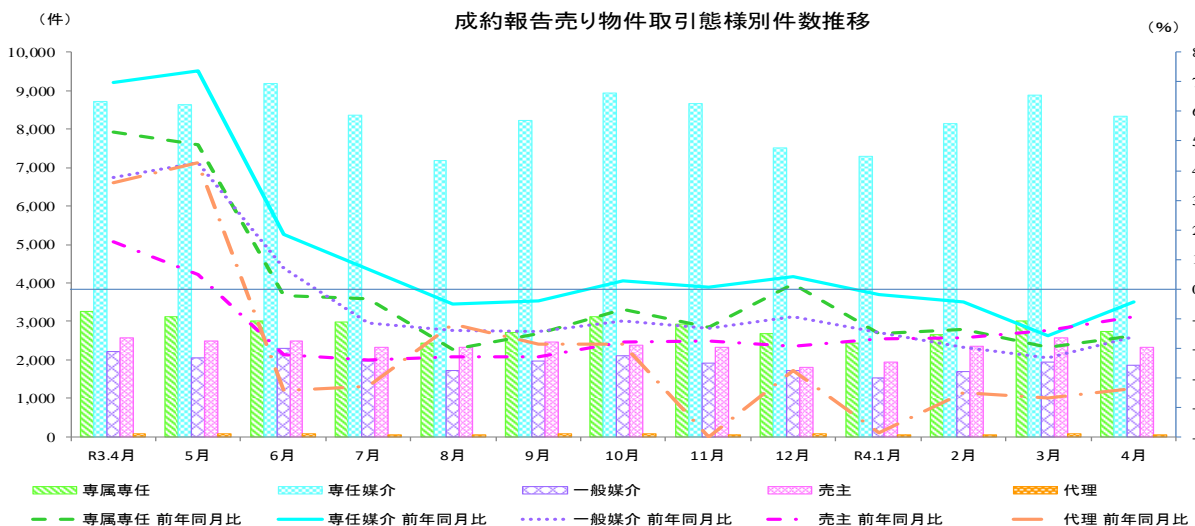
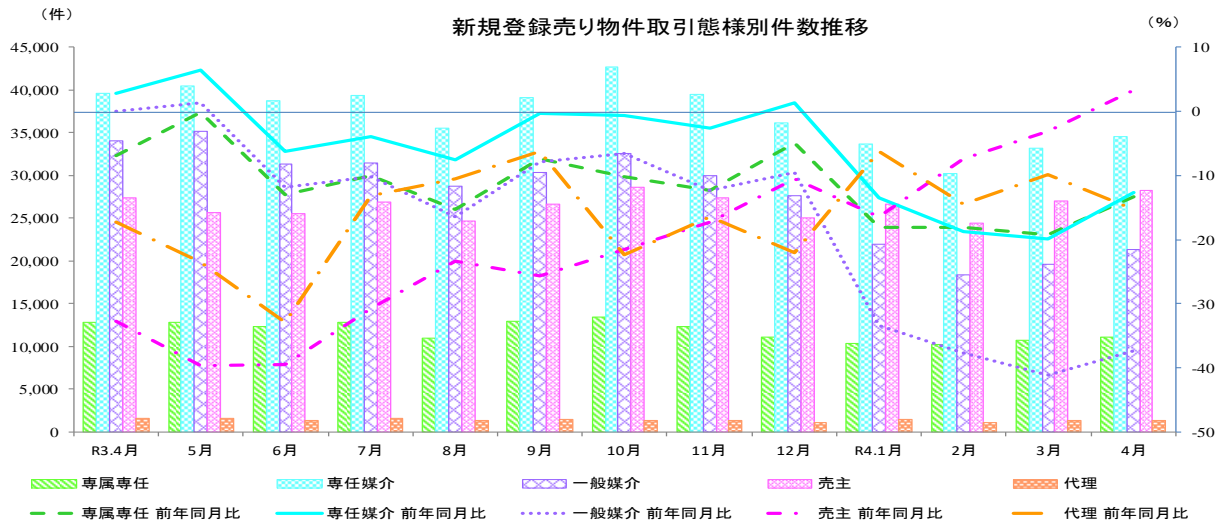
### 3. 売り物件の取引態様別物件数

令和4年4月の新規登録売り物件の取引態様別をみると、専任媒介は35.8%を占め、次いで売主は29.3%を占めている。成約報告売り物件の取引態様別をみると、専任媒介は54.4%を占め、次いで専属専任は17.9%を占めている。

R4年4月 売り物件の取引態様別件数

	取引態様	件数	構成比	前年同月比	前月比
新規登録件数	媒介契約	67,017 件	69.4 %	▲ 22.5 %	↓ 5.4 %
	専属専任	11,134 件	11.5 %	▲ 13.2 %	↓ 3.5 %
	専任媒介	34,550 件	35.8 %	▲ 12.7 %	↓ 3.9 %
	一般媒介	21,333 件	22.1 %	▲ 37.3 %	↓ 8.9 %
	売主	28,265 件	29.3 %	3.2 %	↓ 4.7 %
	代理	1,350 件	1.4 %	▲ 15.3 %	↓ 3.2 %
成約報告件数	媒介契約	12,918 件	84.4 %	▲ 8.9 %	▲ 6.7 %
	専属専任	2,739 件	17.9 %	▲ 15.8 %	▲ 9.0 %
	専任媒介	8,326 件	54.4 %	▲ 4.4 %	▲ 6.3 %
	一般媒介	1,853 件	12.1 %	▲ 16.3 %	▲ 4.8 %
	売主	2,331 件	15.2 %	▲ 9.3 %	▲ 9.7 %
	代理	55 件	0.4 %	▲ 33.7 %	▲ 11.3 %

凡例: ↑ 10% ~ 🔄 3% ~ 10% ➡ -3% ~ 3% 📉 -10% ~ -3% ↓ ~ -10%



## 指定流通機構実態調査集計、総括表 新規登録件数

		総 数	物 件 種 別				
			マンション	一 戸 建	土 地	住宅外全部	住宅外一部
全 総計件数		357,811	267,369	37,472	26,107	7,724	19,139
[前月比]		[-5.5]	[-8.8]	[4.7]	[12.2]	[3.5]	[0.4]
売 地	総 計	96,632	35,321	30,430	25,222	5,151	508
	[前月比]	[5.2]	[0.1]	[6.8]	[11.9]	[2.9]	[-9.6]
	北海道	2,779	936	765	833	238	7
	[前月比]	[14.6]	[5.4]	[24.6]	[27.4]	[-9.8]	[16.7]
	東北	3,498	767	1,251	1,249	221	10
	[前月比]	[22.1]	[19.8]	[9.5]	[36.2]	[41.7]	[11.1]
	関東甲信越	5,676	458	2,164	2,708	331	15
	[前月比]	[9.9]	[-3.6]	[10.3]	[13.3]	[0.3]	[66.7]
	首都圏	43,251	22,146	11,552	6,883	2,353	317
	[前月比]	[6.2]	[2.6]	[10.2]	[14.9]	[1.2]	[-11.2]
	中部4県	4,151	510	1,321	2,079	231	10
	[前月比]	[10.1]	[0.2]	[3.3]	[16.7]	[21.6]	[-9.1]
	中部圏	7,652	1,773	2,857	2,644	353	25
	[前月比]	[4.1]	[-3.9]	[8.3]	[4.1]	[14.2]	[4.2]
	近畿圏	16,728	5,756	6,178	4,002	703	89
	[前月比]	[-2.3]	[-8.2]	[-0.7]	[5.1]	[0.1]	[-25.2]
	中国	3,985	503	1,434	1,852	190	6
	[前月比]	[17.8]	[-11.6]	[24.4]	[23.0]	[25.8]	[50.0]
	四国	1,192	182	408	513	86	3
	[前月比]	[-12.2]	[-1.6]	[-15.9]	[-14.6]	[2.4]	[0.0]
九州	7,720	2,290	2,500	2,459	445	26	
[前月比]	[0.2]	[-1.6]	[-0.5]	[4.4]	[-9.9]	[30.0]	
取 引 態 様 別	専属専任	11,134	4,401	3,085	2,881	728	39
	[前月比]	[3.5]	[-1.3]	[4.6]	[9.4]	[6.7]	[5.4]
	専任媒介	34,550	12,748	9,938	10,045	1,635	184
	[前月比]	[3.9]	[1.6]	[3.9]	[8.3]	[-2.7]	[2.2]
	一般媒介	21,333	6,352	5,953	6,939	1,967	122
	[前月比]	[8.9]	[0.6]	[9.6]	[17.8]	[8.6]	[-8.3]
	売主	28,265	11,163	11,238	5,023	698	143
[前月比]	[4.7]	[-1.5]	[8.7]	[13.1]	[0.9]	[-25.5]	
代理	1,350	657	216	334	123	20	
[前月比]	[3.2]	[1.9]	[5.9]	[11.3]	[-11.5]	[0.0]	
賃 物 件		261,179	232,048	7,042	885	2,573	18,631
[前月比]		[-8.9]	[-10.0]	[-3.7]	[22.6]	[4.5]	[0.7]
賃 地	北海道	2,312	2,142	33	13	6	118
	[前月比]	[1.4]	[-0.9]	[-2.9]	[550.0]	[-60.0]	[73.5]
	東北	5,960	5,609	122	20	37	172
	[前月比]	[-10.9]	[-11.8]	[-3.9]	[42.9]	[0.0]	[11.0]
	関東甲信越	10,314	9,658	204	70	79	303
	[前月比]	[-7.2]	[-7.5]	[-19.0]	[48.9]	[-12.2]	[4.8]
	首都圏	186,355	168,562	3,568	259	1,210	12,756
	[前月比]	[-9.9]	[-10.8]	[-8.0]	[4.4]	[4.6]	[0.7]
	中部4県	2,291	1,653	208	42	140	248
	[前月比]	[-11.7]	[-14.7]	[1.0]	[-8.7]	[38.6]	[-18.2]
	中部圏	2,975	2,442	107	97	128	201
	[前月比]	[-15.0]	[-8.7]	[-19.5]	[21.3]	[10.3]	[-59.4]
	近畿圏	38,740	32,621	1,800	222	695	3,402
	[前月比]	[-6.0]	[-6.4]	[-1.7]	[35.4]	[-3.3]	[-6.6]
	中国	3,730	2,441	472	74	109	634
[前月比]	[106.1]	[75.4]	[93.4]	[252.4]	[179.5]	[456.1]	
四国	646	471	82	15	15	63	
[前月比]	[8.4]	[17.8]	[24.2]	[0.0]	[-48.3]	[-26.7]	
九州	7,856	6,449	446	73	154	734	
[前月比]	[-22.6]	[-25.8]	[-17.7]	[-14.1]	[-3.1]	[8.1]	

\* 前月比欄の数値は、対前月増減率である。

\* 「関東甲信越」は、茨城県・栃木県・群馬県・新潟県・山梨県・長野県、「首都圏」は、東京都・千葉県・埼玉県・神奈川県、「中部圏」は、愛知県・岐阜県・三重県、「中部4県」は、富山県・石川県・福井県・静岡県、「近畿圏」は、大阪府・京都府・兵庫県・滋賀県・奈良県・和歌山県をいう。

指定流通機構実態調査 売り物件・新規登録件数 時系列表

	3年4月	3年5月	3年6月	3年7月	3年8月	3年9月	3年10月	3年11月	3年12月	4年1月	4年2月	4年3月	4年4月	一年間計
	件数	件数	件数	件数	件数	件数	件数	件数	件数	件数	件数	件数	件数	件数
	(前月比)	(前月比)	(前月比)	(前月比)	(前月比)	(前月比)	(前月比)	(前月比)	(前月比)	(前月比)	(前月比)	(前月比)	(前月比)	(前月比)
	(前年比)	(前年比)	(前年比)	(前年比)	(前年比)	(前年比)	(前年比)	(前年比)	(前年比)	(前年比)	(前年比)	(前年比)	(前年比)	(構成比)
総数	115,409	115,529	109,376	112,052	101,222	110,620	118,643	110,297	100,913	94,030	84,288	91,889	96,632	1,245,491
	(-1.7)	(0.1)	(-5.3)	(2.4)	(-9.7)	(9.3)	(7.3)	(-7.0)	(-8.5)	(-6.8)	(-10.4)	(9.0)	(5.2)	
	[-10.5]	[-11.1]	[-19.2]	[-14.4]	[-15.2]	[-10.6]	[-9.4]	[-10.5]	[-5.9]	[-20.3]	[-21.0]	[-21.7]	[-16.3]	
北海道	2,431	2,360	2,358	2,693	2,229	2,625	2,809	2,513	2,271	2,124	2,096	2,426	2,779	29,283
	(7.2)	(-2.9)	(-0.1)	(14.2)	(-17.2)	(17.8)	(7.0)	(-10.5)	(-9.6)	(-6.5)	(-1.3)	(15.7)	(14.6)	(2.4)
	[-15.4]	[-4.6]	[-10.5]	[-11.9]	[-13]	[0.4]	[1.5]	[1.3]	[14.5]	[-4.1]	[6.4]	[7.0]	[14.3]	
東北	3,182	2,859	3,046	2,999	2,734	3,154	3,394	3,037	2,804	2,906	2,687	2,864	3,498	35,982
	(0.4)	(-10.2)	(6.5)	(-1.5)	(-8.8)	(15.4)	(7.6)	(-10.5)	(-7.7)	(3.6)	(-7.5)	(6.6)	(22.1)	(2.9)
	[-17.5]	[-18.6]	[-13.4]	[-15.7]	[-12.2]	[-9.1]	[-11.2]	[-13.0]	[-16.4]	[-24.2]	[-2.2]	[-9.7]	[9.9]	
関東甲信越	4,646	4,803	4,686	4,888	4,169	4,279	5,088	4,529	4,052	5,034	4,294	5,167	5,676	56,645
	(-0.8)	(3.4)	(-2.4)	(4.3)	(-14.7)	(2.6)	(18.4)	(-10.6)	(-10.5)	(24.2)	(-14.7)	(20.3)	(9.9)	(4.5)
	[-14.3]	[-8.4]	[-2.1]	[0.6]	[-5.3]	[-28.2]	[-9.8]	[-10.7]	[-10.8]	[24.2]	[-14.7]	[20.3]	[9.9]	
首都圏	37,980	34,656	34,714	37,069	32,003	36,294	39,851	37,450	33,328	37,049	37,596	40,743	43,251	444,004
	(-0.2)	(-8.8)	(0.2)	(6.8)	(-13.7)	(13.4)	(9.8)	(-6.0)	(-11.0)	(11.2)	(1.5)	(8.4)	(6.2)	(35.6)
	[-17.8]	[-25.0]	[-33.6]	[-23.9]	[-17.8]	[-17.5]	[-14.9]	[-11.9]	[-1.5]	[-3.3]	[4.7]	[7.1]	[13.9]	
中部4県	5,816	7,204	4,834	3,804	3,738	4,044	4,013	3,738	3,145	3,836	3,133	3,771	4,151	49,411
	(30.8)	(23.9)	(-32.9)	(-21.3)	(-1.7)	(8.2)	(-0.8)	(-6.9)	(-15.9)	(22.0)	(-18.3)	(20.4)	(10.1)	(4.0)
	[49.7]	[90.7]	[25.7]	[1.4]	[11.7]	[-1.1]	[-7.7]	[-8.1]	[-11.8]	[-20.4]	[-16.5]	[-15.2]	[-28.6]	
中部圏	7,244	7,089	6,737	6,599	6,085	6,836	7,029	6,686	5,943	7,190	6,741	7,354	7,652	81,941
	(1.1)	(-2.1)	(-5.0)	(-2.0)	(-7.8)	(12.3)	(2.8)	(-4.9)	(-11.1)	(21.0)	(-6.2)	(9.1)	(4.1)	(6.6)
	[-1.1]	[-13.3]	[-13.4]	[-9.8]	[-12.7]	[-11.2]	[-9.7]	[-9.3]	[-7.7]	[-4.4]	[6.1]	[2.6]	[5.6]	
近畿圏	18,795	18,262	18,108	18,620	16,485	18,691	19,961	17,554	16,311	17,301	15,742	17,115	16,728	210,878
	(-7.1)	(-2.8)	(-0.8)	(2.8)	(-11.5)	(13.4)	(6.8)	(-12.1)	(-7.1)	(6.1)	(-9.0)	(8.7)	(-2.3)	(16.9)
	[-11.0]	[-15.4]	[-19.8]	[-10.2]	[-15.2]	[-10.4]	[-8.5]	[-10.5]	[-9.5]	[-11.0]	[-16.1]	[-15.4]	[-11.0]	
中国	6,755	7,309	6,852	6,967	6,356	6,594	7,863	7,003	6,855	3,613	2,940	3,383	3,985	69,720
	(-16.4)	(8.2)	(-6.3)	(1.7)	(-8.8)	(3.7)	(19.2)	(-10.9)	(-2.1)	(-47.3)	(-18.6)	(15.1)	(17.8)	(5.6)
	[-9.0]	[0.2]	[-2.1]	[-8.4]	[-13.1]	[0.2]	[2.0]	[-4.4]	[1.8]	[-49.4]	[-54.2]	[-58.1]	[-41.0]	
四国	4,107	5,189	3,948	3,874	4,185	3,780	3,892	4,380	3,485	4,361	1,726	1,358	1,192	41,370
	(4.9)	(26.3)	(-23.9)	(-1.9)	(8.0)	(-9.7)	(3.0)	(12.5)	(-20.4)	(25.1)	(-60.4)	(-21.3)	(-12.2)	(3.3)
	[-13.6]	[35.8]	[1.0]	[4.8]	[-18.1]	[-1.1]	[-3.6]	[0.2]	[-5.0]	[21.9]	[-57.0]	[-65.3]	[-71.0]	
九州	24,453	25,798	24,093	24,539	23,238	24,323	24,763	23,407	22,719	10,616	7,333	7,708	7,720	226,257
	(-3.7)	(5.5)	(-6.6)	(1.9)	(-5.3)	(4.7)	(1.8)	(-5.5)	(-2.9)	(-53.3)	(-30.9)	(5.1)	(0.2)	(18.2)
	[-6.3]	[-7.4]	[-11.0]	[-11.0]	[-18.6]	[-1.1]	[-5.6]	[-15.3]	[-11.2]	[-58.9]	[-67.5]	[-69.6]	[-68.4]	
取	12,834	12,799	12,298	12,834	10,920	12,949	13,414	12,259	11,028	10,292	10,191	10,762	11,134	140,880
	(-3.6)	(-0.3)	(-3.9)	(4.4)	(-14.9)	(18.6)	(3.6)	(-8.6)	(-10.0)	(-6.7)	(-1.0)	(5.6)	(3.5)	(11.3)
	[-7.0]	[-0.2]	[-12.9]	[-10.0]	[-15.3]	[-7.3]	[-10.1]	[-12.3]	[-5.0]	[-18.1]	[-18.1]	[-19.2]	[-13.2]	
引	39,570	40,433	38,777	39,326	35,511	39,166	42,661	39,442	36,129	33,737	30,279	33,251	34,550	443,262
	(-4.7)	(2.2)	(-4.1)	(1.4)	(-9.7)	(10.3)	(8.9)	(-7.5)	(-8.4)	(-6.6)	(-10.2)	(9.8)	(3.9)	(35.6)
	[2.8]	[6.5]	[-6.2]	[-3.9]	[-7.6]	[-0.3]	[-0.6]	[-2.7]	[1.3]	[-13.5]	[-18.7]	[-19.9]	[-12.7]	
態	34,033	35,128	31,349	31,423	28,797	30,367	32,602	29,950	27,603	22,006	18,366	19,581	21,333	328,505
	(2.3)	(3.2)	(-10.8)	(0.2)	(-8.4)	(5.5)	(7.4)	(-8.1)	(-7.8)	(-20.3)	(-16.5)	(6.6)	(8.9)	(26.4)
	[0.1]	[1.4]	[-11.8]	[-10.1]	[-16.5]	[-7.9]	[-6.6]	[-12.3]	[-9.6]	[-33.4]	[-37.7]	[-41.1]	[-37.3]	
別	27,379	25,630	25,586	26,928	24,635	26,695	28,628	27,355	25,070	26,599	24,383	26,987	28,265	316,761
	(-1.8)	(-6.4)	(-0.2)	(5.2)	(-8.5)	(8.4)	(7.2)	(-4.4)	(-8.4)	(6.1)	(-8.3)	(10.7)	(4.7)	(25.4)
	[-32.8]	[-39.7]	[-39.6]	[-30.8]	[-23.3]	[-25.7]	[-21.6]	[-17.3]	[-10.4]	[-16.4]	[-7.4]	[-3.2]	[3.2]	
代理	1,593	1,539	1,366	1,541	1,359	1,443	1,338	1,291	1,083	1,396	1,069	1,308	1,350	16,083
	(9.9)	(-3.4)	(-11.2)	(12.8)	(-11.8)	(6.2)	(-7.3)	(-3.5)	(-16.1)	(28.9)	(-23.4)	(22.4)	(3.2)	(1.3)
	[-17.3]	[-23.5]	[-32.9]	[-13.2]	[-10.6]	[-6.2]	[-22.3]	[-16.4]	[-22.1]	[-6.2]	[-14.4]	[-9.8]	[-15.3]	
物	34,604	33,234	32,724	34,919	30,990	34,581	37,711	35,200	32,223	33,376	32,020	35,295	35,321	407,594
	(-3.6)	(-4.0)	(-1.5)	(6.7)	(-11.3)	(11.6)	(9.1)	(-6.7)	(-8.5)	(3.6)	(-4.1)	(10.2)	(0.1)	(32.7)
	[-6.5]	[-10.8]	[-20.9]	[-12.4]	[-11.8]	[-11.1]	[-6.6]	[-6.0]	[-4.1]	[-6.9]	[-4.2]	[-1.7]	[2.1]	
件	37,862	37,831	35,980	35,929	31,988	35,686	38,691	35,261	32,328	29,985	25,760	28,487	30,430	398,356
	(0.1)	(-0.1)	(-4.9)	(-0.1)	(-11.0)	(11.6)	(8.4)	(-8.9)	(-8.3)	(-7.2)	(-14.1)	(10.6)	(6.8)	(32.0)
	[-13.5]	[-15.9]	[-20.8]	[-16.0]	[-17.1]	[-9.0]	[-7.5]	[-9.5]	[-4.5]	[-21.6]	[-24.3]	[-24.7]	[-19.6]	
種	36,608	38,222	34,321	34,863	32,424	34,272	35,524	33,796	30,942	25,142	21,558	22,541	25,222	368,827
	(-1.5)	(4.4)	(-10.2)	(1.6)	(-7.0)	(5.7)	(3.7)	(-4.9)	(-8.4)	(-18.7)	(-14.3)	(4.6)	(11.9)	(29.6)
	[-12.4]	[-7.1]	[-18.3]	[-16.1]	[-18.3]	[-12.8]	[-15.6]	[-16.6]	[-9.4]	[-33.4]	[-35.8]	[-39.3]	[-31.1]	
別	5,768	5,707	5,797	5,819	5,424	5,559	6,149	5,447	4,934	4,954	4,463	5,004	5,151	64,408
	(-2.9)	(-1.1)	(1.6)	(0.4)	(-6.8)	(2.5)	(10.6)	(-11.4)	(-9.4)	(0.4)	(-9.9)	(12.1)	(2.9)	(5.2)
	[-1.4]	[-4.9]	[-4.1]	[-5.5]	[-1.1]	[-3.4]	[0.8]	[-7.1]	[-4.7]	[-10.7]	[-14.2]	[-15.7]	[-10.7]	
住宅外(一部)	567	535	554	522	396	522	568	593	486	573	487	562	508	6,306
	(-3.4)	(-5.6)	(3.6)	(-5.8)	(-24.1)	(31.8)	(8.8)	(4.4)	(-18.0)	(17.9)	(-15.0)	(15.4)	(-9.6)	(0.5)
	[12.1]	[-11.4]	[3.2]	[1.4]	[-21.4]	[2.8]	[-1.2]	[13.0]	[8.2]	[-2.7]	[-6.2]	[-4.3]	[-10.4]	

※ 構成比は、四捨五入による端数処理のため内数の合計が100%にならないことがある

指定流通機構実態調査集計、総括表 地域別取引態様別売物件月間新規登録件数

地域	取引態様	総数	物件種別				
			マンション	一戸建	土地	住宅外全部	住宅外一部
北海道	専属専任 [構成比]	253 [ 9.1]	107 [ 11.4]	48 [ 6.3]	77 [ 9.2]	21 [ 8.8]	0 [ 0.0]
	専任媒介 [構成比]	1,513 [ 54.4]	408 [ 43.6]	491 [ 64.2]	495 [ 59.4]	115 [ 48.3]	4 [ 57.1]
	一般媒介 [構成比]	536 [ 19.3]	134 [ 14.3]	147 [ 19.2]	183 [ 22.0]	70 [ 29.4]	2 [ 28.6]
	売主 [構成比]	458 [ 16.5]	285 [ 30.4]	78 [ 10.2]	65 [ 7.8]	30 [ 12.6]	0 [ 0.0]
	代理 [構成比]	19 [ 0.7]	2 [ 0.2]	1 [ 0.1]	13 [ 1.6]	2 [ 0.8]	1 [ 14.3]
	合計 [地域比]	2,779 [ 2.9]	936 [ 2.6]	765 [ 2.5]	833 [ 3.3]	238 [ 4.6]	7 [ 1.4]
東北	専属専任 [構成比]	299 [ 8.5]	63 [ 8.2]	74 [ 5.9]	124 [ 9.9]	38 [ 17.2]	0 [ 0.0]
	専任媒介 [構成比]	1,441 [ 41.2]	360 [ 46.9]	518 [ 41.4]	499 [ 40.0]	60 [ 27.1]	4 [ 40.0]
	一般媒介 [構成比]	963 [ 27.5]	122 [ 15.9]	289 [ 23.1]	440 [ 35.2]	111 [ 50.2]	1 [ 10.0]
	売主 [構成比]	787 [ 22.5]	218 [ 28.4]	370 [ 29.6]	184 [ 14.7]	10 [ 4.5]	5 [ 50.0]
	代理 [構成比]	8 [ 0.2]	4 [ 0.5]	0 [ 0.0]	2 [ 0.2]	2 [ 0.9]	0 [ 0.0]
	合計 [地域比]	3,498 [ 3.6]	767 [ 2.2]	1,251 [ 4.1]	1,249 [ 5.0]	221 [ 4.3]	10 [ 2.0]
関東甲信越	専属専任 [構成比]	357 [ 6.3]	32 [ 7.0]	100 [ 4.6]	165 [ 6.1]	59 [ 17.8]	1 [ 6.7]
	専任媒介 [構成比]	1,921 [ 33.8]	198 [ 43.2]	620 [ 28.7]	997 [ 36.8]	98 [ 29.6]	8 [ 53.3]
	一般媒介 [構成比]	1,923 [ 33.9]	147 [ 32.1]	603 [ 27.9]	1,039 [ 38.4]	131 [ 39.6]	3 [ 20.0]
	売主 [構成比]	1,423 [ 25.1]	78 [ 17.0]	830 [ 38.4]	477 [ 17.6]	35 [ 10.6]	3 [ 20.0]
	代理 [構成比]	52 [ 0.9]	3 [ 0.7]	11 [ 0.5]	30 [ 1.1]	8 [ 2.4]	0 [ 0.0]
	合計 [地域比]	5,676 [ 5.9]	458 [ 1.3]	2,164 [ 7.1]	2,708 [ 10.7]	331 [ 6.4]	15 [ 3.0]
首都圏	専属専任 [構成比]	4,856 [ 11.2]	2,804 [ 12.7]	879 [ 7.6]	837 [ 12.2]	311 [ 13.2]	25 [ 7.9]
	専任媒介 [構成比]	14,457 [ 33.4]	6,960 [ 31.4]	3,831 [ 33.2]	2,872 [ 41.7]	692 [ 29.4]	102 [ 32.2]
	一般媒介 [構成比]	6,001 [ 13.9]	2,987 [ 13.5]	1,183 [ 10.2]	944 [ 13.7]	825 [ 35.1]	62 [ 19.6]
	売主 [構成比]	16,954 [ 39.2]	8,825 [ 39.8]	5,522 [ 47.8]	2,063 [ 30.0]	435 [ 18.5]	109 [ 34.4]
	代理 [構成比]	983 [ 2.3]	570 [ 2.6]	137 [ 1.2]	167 [ 2.4]	90 [ 3.8]	19 [ 6.0]
	合計 [地域比]	43,251 [ 44.8]	22,146 [ 62.7]	11,552 [ 38.0]	6,883 [ 27.3]	2,353 [ 45.7]	317 [ 62.4]
中部四県	専属専任 [構成比]	333 [ 8.0]	17 [ 3.3]	99 [ 7.5]	192 [ 9.2]	25 [ 10.8]	0 [ 0.0]
	専任媒介 [構成比]	1,590 [ 38.3]	250 [ 49.0]	417 [ 31.6]	831 [ 40.0]	86 [ 37.2]	6 [ 60.0]
	一般媒介 [構成比]	1,404 [ 33.8]	180 [ 35.3]	371 [ 28.1]	743 [ 35.7]	107 [ 46.3]	3 [ 30.0]
	売主 [構成比]	799 [ 19.2]	58 [ 11.4]	432 [ 32.7]	296 [ 14.2]	12 [ 5.2]	1 [ 10.0]
	代理 [構成比]	25 [ 0.6]	5 [ 1.0]	2 [ 0.2]	17 [ 0.8]	1 [ 0.4]	0 [ 0.0]
	合計 [地域比]	4,151 [ 4.3]	510 [ 1.4]	1,321 [ 4.3]	2,079 [ 8.2]	231 [ 4.5]	10 [ 2.0]
中部圏	専属専任 [構成比]	684 [ 8.9]	198 [ 11.2]	196 [ 6.9]	220 [ 8.3]	67 [ 19.0]	3 [ 12.0]
	専任媒介 [構成比]	2,562 [ 33.5]	742 [ 41.8]	658 [ 23.0]	1,048 [ 39.6]	108 [ 30.6]	6 [ 24.0]
	一般媒介 [構成比]	2,083 [ 27.2]	445 [ 25.1]	505 [ 17.7]	970 [ 36.7]	153 [ 43.3]	10 [ 40.0]
	売主 [構成比]	2,291 [ 29.9]	378 [ 21.3]	1,496 [ 52.4]	387 [ 14.6]	24 [ 6.8]	6 [ 24.0]
	代理 [構成比]	32 [ 0.4]	10 [ 0.6]	2 [ 0.1]	19 [ 0.7]	1 [ 0.3]	0 [ 0.0]
	合計 [地域比]	7,652 [ 7.9]	1,773 [ 5.0]	2,857 [ 9.4]	2,644 [ 10.5]	353 [ 6.9]	25 [ 4.9]
近畿圏	専属専任 [構成比]	3,259 [ 19.5]	953 [ 16.6]	1,385 [ 22.4]	775 [ 19.4]	138 [ 19.6]	8 [ 9.0]
	専任媒介 [構成比]	5,904 [ 35.3]	2,429 [ 42.2]	1,797 [ 29.1]	1,437 [ 35.9]	200 [ 28.4]	41 [ 46.1]
	一般媒介 [構成比]	4,004 [ 23.9]	1,425 [ 24.8]	1,378 [ 22.3]	937 [ 23.4]	241 [ 34.3]	23 [ 25.8]
	売主 [構成比]	3,394 [ 20.3]	899 [ 15.6]	1,569 [ 25.4]	799 [ 20.0]	110 [ 15.6]	17 [ 19.1]
	代理 [構成比]	167 [ 1.0]	50 [ 0.9]	49 [ 0.8]	54 [ 1.3]	14 [ 2.0]	0 [ 0.0]
	合計 [地域比]	16,728 [ 17.3]	5,756 [ 16.3]	6,178 [ 20.3]	4,002 [ 15.9]	703 [ 13.6]	89 [ 17.5]
中国	専属専任 [構成比]	250 [ 6.3]	19 [ 3.8]	77 [ 5.4]	141 [ 7.6]	13 [ 6.8]	0 [ 0.0]
	専任媒介 [構成比]	1,772 [ 44.5]	300 [ 59.6]	658 [ 45.9]	725 [ 39.1]	86 [ 45.3]	3 [ 50.0]
	一般媒介 [構成比]	1,344 [ 33.7]	122 [ 24.3]	460 [ 32.1]	680 [ 36.7]	79 [ 41.6]	3 [ 50.0]
	売主 [構成比]	600 [ 15.1]	61 [ 12.1]	235 [ 16.4]	295 [ 15.9]	9 [ 4.7]	0 [ 0.0]
	代理 [構成比]	19 [ 0.5]	1 [ 0.2]	4 [ 0.3]	11 [ 0.6]	3 [ 1.6]	0 [ 0.0]
	合計 [地域比]	3,985 [ 4.1]	503 [ 1.4]	1,434 [ 4.7]	1,852 [ 7.3]	190 [ 3.7]	6 [ 1.2]
四国	専属専任 [構成比]	149 [ 12.5]	7 [ 3.8]	57 [ 14.0]	75 [ 14.6]	10 [ 11.6]	0 [ 0.0]
	専任媒介 [構成比]	387 [ 32.5]	101 [ 55.5]	112 [ 27.5]	141 [ 27.5]	31 [ 36.0]	2 [ 66.7]
	一般媒介 [構成比]	479 [ 40.2]	53 [ 29.1]	156 [ 38.2]	229 [ 44.6]	40 [ 46.5]	1 [ 33.3]
	売主 [構成比]	171 [ 14.3]	19 [ 10.4]	83 [ 20.3]	64 [ 12.5]	5 [ 5.8]	0 [ 0.0]
	代理 [構成比]	6 [ 0.5]	2 [ 1.1]	0 [ 0.0]	4 [ 0.8]	0 [ 0.0]	0 [ 0.0]
	合計 [地域比]	1,192 [ 1.2]	182 [ 0.5]	408 [ 1.3]	513 [ 2.0]	86 [ 1.7]	3 [ 0.6]
九州	専属専任 [構成比]	694 [ 9.0]	201 [ 8.8]	170 [ 6.8]	275 [ 11.2]	46 [ 10.3]	2 [ 7.7]
	専任媒介 [構成比]	3,003 [ 38.9]	1,000 [ 43.7]	836 [ 33.4]	1,000 [ 40.7]	159 [ 35.7]	8 [ 30.8]
	一般媒介 [構成比]	2,596 [ 33.6]	737 [ 32.2]	861 [ 34.4]	774 [ 31.5]	210 [ 47.2]	14 [ 53.8]
	売主 [構成比]	1,388 [ 18.0]	342 [ 14.9]	623 [ 24.9]	393 [ 16.0]	28 [ 6.3]	2 [ 7.7]
	代理 [構成比]	39 [ 0.5]	10 [ 0.4]	10 [ 0.4]	17 [ 0.7]	2 [ 0.4]	0 [ 0.0]
	合計 [地域比]	7,720 [ 8.0]	2,290 [ 6.5]	2,500 [ 8.2]	2,459 [ 9.7]	445 [ 8.6]	26 [ 5.1]
全国	専属専任 [構成比]	11,134 [ 11.5]	4,401 [ 12.5]	3,085 [ 10.1]	2,881 [ 11.4]	728 [ 14.1]	39 [ 7.7]
	専任媒介 [構成比]	34,550 [ 35.8]	12,748 [ 36.1]	9,938 [ 32.7]	10,045 [ 39.8]	1,635 [ 31.7]	184 [ 36.2]
	一般媒介 [構成比]	21,333 [ 22.1]	6,352 [ 18.0]	5,953 [ 19.6]	6,939 [ 27.5]	1,967 [ 38.2]	122 [ 24.0]
	売主 [構成比]	28,265 [ 29.3]	11,163 [ 31.6]	11,238 [ 36.9]	5,023 [ 19.9]	698 [ 13.6]	143 [ 28.1]
	代理 [構成比]	1,350 [ 1.4]	657 [ 1.9]	216 [ 0.7]	334 [ 1.3]	123 [ 2.4]	20 [ 3.9]
	合計	96,632	35,321	30,430	25,222	5,151	508

※構成比とは地域内の取引態様別構成比で、地域比とは全国合計の地域別シェアである。

※構成比・地域比は、四捨五入による端数処理のため内数の合計が100%にならないことがある。

## 指定流通機構実態調査集計、総括表 月間成約件数

		総 数	物 件 種 別				
			マンション	一 戸 建	土 地	住宅外全部	住宅外一部
全	総計件数	49,822	36,816	6,570	3,367	764	2,305
	[前月比]	[-20.2]	[-23.5]	[-7.6]	[-9.5]	[-4.7]	[-12.3]
売	総 計	15,304	6,321	5,228	3,297	409	49
	[前月比]	[-7.2]	[-6.1]	[-7.2]	[-9.4]	[-1.9]	[-14.0]
地	北海道	733	250	236	201	46	0
	[前月比]	[4.9]	[7.8]	[-1.7]	[8.1]	[15.0]	[-100.0]
域	東北	630	165	229	201	34	1
	[前月比]	[-11.5]	[10.0]	[-25.2]	[-12.6]	[41.7]	[-50.0]
り	関東甲信越	589	77	309	189	14	0
	[前月比]	[-9.1]	[-13.5]	[6.2]	[-24.4]	[-22.2]	[-]
物	首都圏	5,799	3,119	1,603	911	142	24
	[前月比]	[-7.6]	[-9.0]	[-5.8]	[-5.1]	[-5.3]	[-36.8]
別	中部4県	461	99	185	158	18	1
	[前月比]	[-12.5]	[17.9]	[-19.9]	[-19.4]	[12.5]	[-]
件	中部圏	1,393	418	460	476	37	2
	[前月比]	[-5.2]	[-2.3]	[-7.4]	[-5.0]	[-5.1]	[-50.0]
取	近畿圏	3,830	1,580	1,524	652	57	17
	[前月比]	[-4.0]	[-3.8]	[-1.8]	[-10.2]	[-3.4]	[88.9]
引	中国	536	153	215	146	22	0
	[前月比]	[-8.8]	[-10.0]	[-3.2]	[-17.0]	[10.0]	[-]
態	四国	196	51	68	71	6	0
	[前月比]	[-9.7]	[10.9]	[-37.0]	[29.1]	[-25.0]	[-]
様	九州	1,137	409	399	292	33	4
	[前月比]	[-16.1]	[-11.3]	[-18.1]	[-19.1]	[-23.3]	[33.3]
別	専属専任	2,739	1,303	851	513	66	6
	[前月比]	[-9.0]	[-12.6]	[-4.7]	[-7.1]	[-9.6]	[200.0]
件	専任媒介	8,326	3,853	2,434	1,791	232	16
	[前月比]	[-6.3]	[-4.9]	[-6.0]	[-10.8]	[10.5]	[-30.4]
別	一般媒介	1,853	632	604	515	93	9
	[前月比]	[-4.8]	[1.8]	[-3.7]	[-12.6]	[-10.6]	[50.0]
取	売主	2,331	511	1,326	460	16	18
	[前月比]	[-9.7]	[-6.4]	[-12.1]	[-2.7]	[-44.8]	[-30.8]
引	代理	55	22	13	18	2	0
	[前月比]	[-11.3]	[0.0]	[-35.0]	[-5.3]	[100.0]	[-]
賃	総 計	34,518	30,495	1,342	70	355	2,256
	[前月比]	[-24.9]	[-26.4]	[-9.1]	[-11.4]	[-7.8]	[-12.3]
賃	北海道	101	79	5	2	4	11
	[前月比]	[-25.2]	[-33.6]	[-16.7]	[100.0]	[100.0]	[57.1]
物	東北	350	286	28	0	6	30
	[前月比]	[-45.1]	[-48.4]	[-37.8]	[-100.0]	[20.0]	[0.0]
賃	関東甲信越	407	303	43	0	18	43
	[前月比]	[-41.9]	[-45.1]	[-6.5]	[-100.0]	[80.0]	[-51.7]
物	首都圏	18,004	16,112	444	42	128	1,278
	[前月比]	[-23.3]	[-24.1]	[-16.7]	[10.5]	[-11.1]	[-16.4]
賃	中部4県	275	208	25	0	11	31
	[前月比]	[-36.9]	[-38.6]	[25.0]	[-100.0]	[-35.3]	[-47.5]
物	中部圏	405	343	13	2	9	38
	[前月比]	[96.6]	[110.4]	[-7.1]	[-33.3]	[-18.2]	[153.3]
賃	近畿圏	12,930	11,449	638	16	156	671
	[前月比]	[-23.9]	[-26.2]	[0.2]	[-30.4]	[-2.5]	[2.6]
物	中国	143	85	28	4	4	22
	[前月比]	[-40.7]	[-51.4]	[-12.5]	[100.0]	[-20.0]	[-18.5]
賃	四国	78	55	16	0	2	5
	[前月比]	[-31.0]	[-29.5]	[-11.1]	[-]	[-50.0]	[-61.5]
物	九州	1,825	1,575	102	4	17	127
	[前月比]	[-39.1]	[-41.4]	[-18.4]	[0.0]	[-37.0]	[-14.8]

\* 成約件数は成約報告のあった件数である。

## 指定流通機構実態調査集計、総括表 当月末総登録件数

		総 数	物 件 種 別				
			マンション	一 戸 建	土 地	住宅外全部	住宅外一部
全	総計件数	823,907	506,602	101,825	119,324	26,053	70,103
	[前月比]	[-0.2]	[0.3]	[0.0]	[-1.2]	[-1.7]	[-2.1]
売	総 計	293,855	72,605	87,273	115,463	17,050	1,464
	[前月比]	[-0.7]	[-0.8]	[0.4]	[-1.2]	[-1.8]	[-5.4]
り	北海道	9,766	1,942	2,562	4,364	874	24
	[前月比]	[-2.4]	[-1.1]	[-0.8]	[-3.7]	[-4.3]	[14.3]
	東北	13,791	1,493	4,589	6,889	777	43
	[前月比]	[-1.9]	[-0.5]	[-0.7]	[-2.7]	[-3.8]	[-6.5]
	関東甲信越	27,538	1,517	7,586	16,972	1,398	65
	[前月比]	[-2.0]	[-3.3]	[-0.6]	[-2.3]	[-5.1]	[8.3]
	首都圏	88,346	37,566	24,165	19,758	6,115	742
	[前月比]	[-1.3]	[-0.8]	[0.4]	[-3.1]	[-3.8]	[-9.3]
	中部4県	18,322	1,321	5,280	10,747	939	35
	[前月比]	[0.2]	[-1.0]	[0.2]	[0.2]	[1.6]	[-10.3]
	中部圏	28,550	4,918	8,249	14,046	1,267	70
	[前月比]	[0.6]	[0.1]	[1.7]	[0.3]	[-0.2]	[-1.4]
	近畿圏	55,015	15,602	19,521	16,821	2,708	363
	[前月比]	[0.1]	[-0.6]	[0.4]	[0.4]	[0.7]	[0.6]
	中国	15,094	1,220	4,741	8,420	692	21
	[前月比]	[3.8]	[1.0]	[4.8]	[3.5]	[3.7]	[10.5]
四国	7,389	602	1,923	4,450	403	11	
[前月比]	[-0.4]	[1.0]	[1.9]	[-1.4]	[-1.2]	[-15.4]	
九州	30,044	6,424	8,657	12,996	1,877	90	
[前月比]	[-2.2]	[-1.8]	[-1.7]	[-3.1]	[1.1]	[-9.1]	
物 別	専属専任	34,011	10,348	9,696	11,863	1,970	134
	[前月比]	[-1.1]	[-1.5]	[-0.2]	[-0.9]	[-3.9]	[-11.3]
	専任媒介	111,701	30,532	30,496	44,427	5,690	556
	[前月比]	[-1.0]	[-0.1]	[-0.5]	[-1.7]	[-2.7]	[-0.2]
	一般媒介	89,236	18,465	20,585	42,277	7,381	528
	[前月比]	[-1.1]	[-2.0]	[-0.4]	[-1.0]	[-0.7]	[-6.5]
売主	55,369	12,167	25,837	15,617	1,550	198	
[前月比]	[0.6]	[-0.2]	[2.2]	[-0.6]	[-2.7]	[-10.4]	
代理	3,538	1,093	659	1,279	459	48	
[前月比]	[-0.2]	[0.0]	[1.7]	[-2.1]	[3.1]	[-9.4]	
賃	総 計	530,052	433,997	14,552	3,861	9,003	68,639
	[前月比]	[0.0]	[0.5]	[-1.8]	[0.7]	[-1.4]	[-2.1]
賃	北海道	3,334	2,851	91	46	56	290
	[前月比]	[0.1]	[0.5]	[-2.2]	[0.0]	[-3.4]	[-2.0]
	東北	9,243	7,630	304	122	161	1,026
	[前月比]	[-1.1]	[-1.5]	[-1.3]	[-3.9]	[-2.4]	[2.3]
	関東甲信越	15,664	12,864	547	342	397	1,514
	[前月比]	[-2.3]	[-2.5]	[-5.5]	[8.2]	[-1.5]	[-1.4]
	首都圏	356,000	301,448	5,503	1,168	3,637	44,244
	[前月比]	[0.5]	[1.2]	[1.1]	[-2.9]	[-3.5]	[-3.2]
	中部4県	7,182	4,627	526	199	532	1,298
	[前月比]	[-3.6]	[-5.8]	[-2.0]	[-0.5]	[4.7]	[0.3]
	中部圏	6,804	4,382	277	415	327	1,403
	[前月比]	[-1.9]	[1.2]	[-3.5]	[1.0]	[1.2]	[-11.4]
	近畿圏	101,527	79,328	5,191	840	2,703	13,465
	[前月比]	[-2.6]	[-2.5]	[-7.3]	[2.7]	[-1.5]	[-1.6]
	中国	6,601	4,047	759	179	307	1,309
	[前月比]	[48.5]	[50.6]	[41.1]	[22.6]	[17.6]	[61.4]
四国	2,334	1,362	261	98	147	466	
[前月比]	[1.7]	[2.6]	[3.2]	[5.4]	[-2.0]	[-0.9]	
九州	21,363	15,458	1,093	452	736	3,624	
[前月比]	[-1.7]	[-1.2]	[-7.3]	[-4.8]	[-1.3]	[-2.0]	