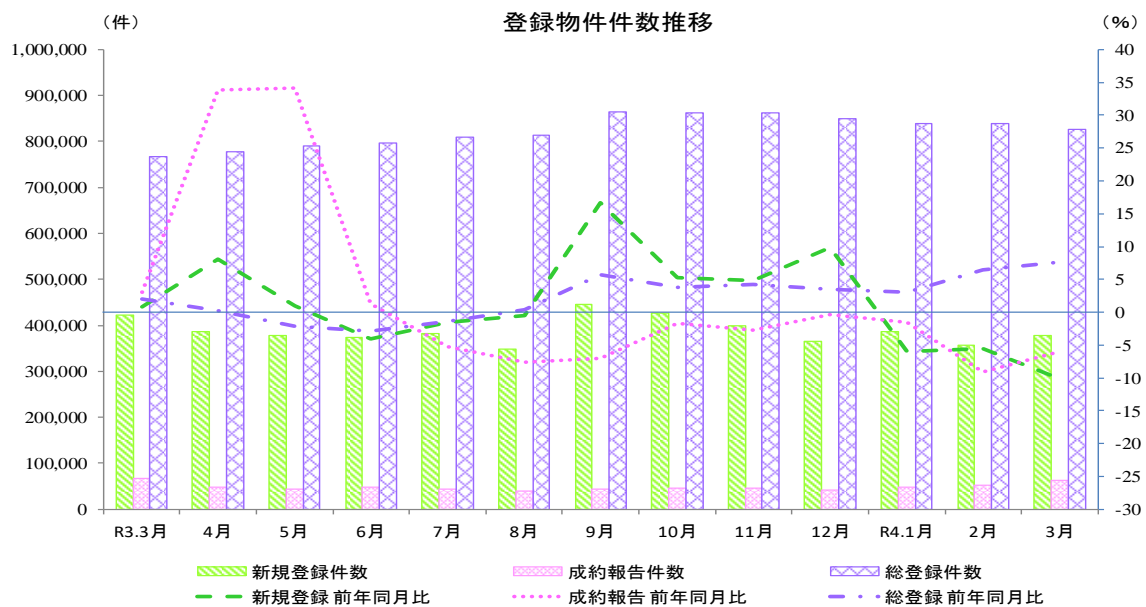


## 指定流通機構の活用状況について (令和4年3月分)

### 1. 概況

令和4年3月の指定流通機構の活用状況をみると、新規登録件数は378,723件と前年同月比で3ヶ月連続してマイナスとなり、前月比ではふたたびプラスに転じた。成約報告件数は62,418件と前年同月比で9ヶ月連続してマイナスとなり、前月比では3ヶ月連続してプラスとなった。総登録件数は825,903件と前年同月比で8ヶ月連続してプラスとなり、前月比では4ヶ月連続してマイナスとなった。



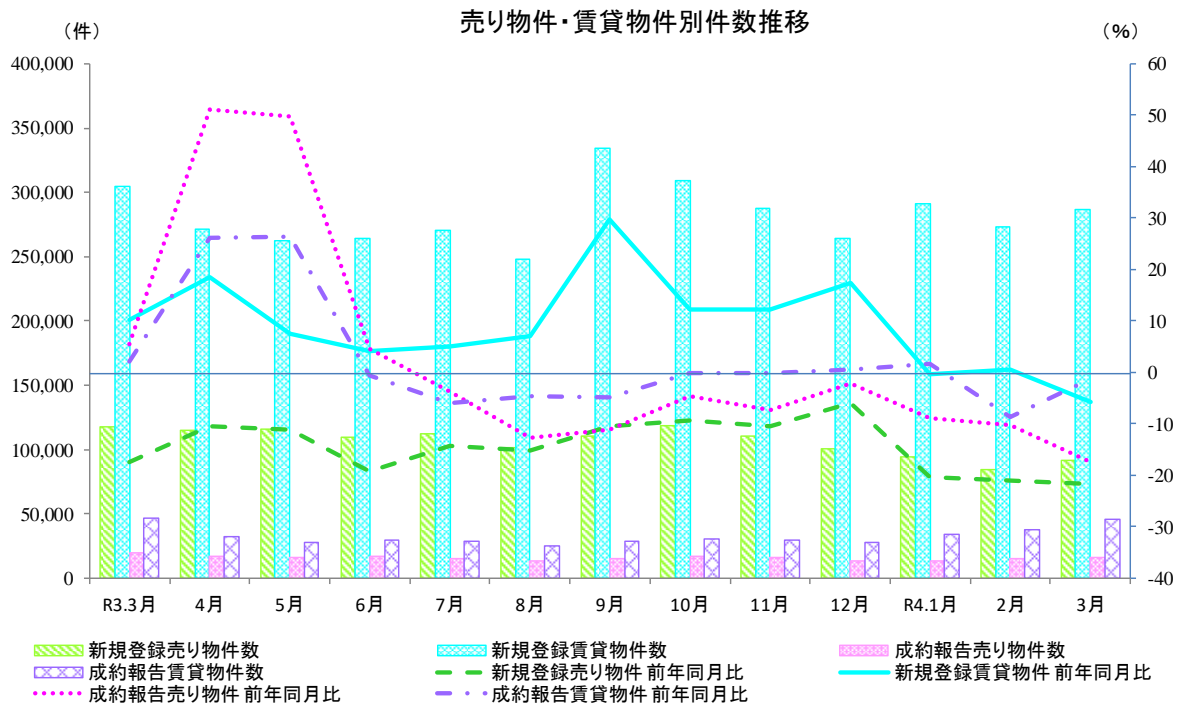
### 物件件数の推移

	R3.3月	4月	5月	6月	7月	8月	9月	10月	11月	12月	R4.1月	2月	3月
新規登録件数(件)	421,620	386,626	377,495	373,741	382,307	349,286	445,036	427,604	398,228	365,158	385,517	357,213	378,723
前年同月比(%)	0.8	8.1	1.0	▲4.0	▲1.5	▲0.5	16.7	5.3	4.8	9.9	▲6.0	▲5.6	▲10.2
前月比(%)	11.5	▲8.3	▲2.4	▲1.0	2.3	▲8.6	27.4	▲3.9	▲6.9	▲8.3	5.6	▲7.3	6.0
成約報告件数(件)	66,439	48,912	44,460	47,095	44,222	38,827	44,537	46,857	45,451	41,400	47,718	52,704	62,418
前年同月比(%)	3.1	33.8	34.2	1.2	▲5.2	▲7.7	▲7.1	▲1.7	▲2.7	▲0.4	▲1.5	▲9.1	▲6.1
前月比(%)	14.6	▲26.4	▲9.1	5.9	▲6.1	▲12.2	14.7	5.2	▲3.0	▲8.9	15.3	10.4	18.4
総登録件数(件)	767,838	777,968	790,248	796,440	808,898	814,480	863,991	861,322	862,294	849,180	838,799	838,038	825,903
前年同月比(%)	2.0	0.2	▲2.1	▲2.9	▲1.3	0.3	5.7	3.7	4.2	3.5	3.1	6.5	7.6
前月比(%)	▲2.4	1.3	1.6	0.8	1.6	0.7	6.1	▲0.3	0.1	▲1.5	▲1.2	▲0.1	▲1.4

## 2. 売り・賃貸別物件数

令和4年3月の売り物件数をみると、新規登録件数は91,889件と前年同月比で24ヶ月連続してマイナスとなり、前月比では5ヶ月ぶりにプラスに転じた。成約報告件数は16,483件と前年同月比で9ヶ月連続してマイナスとなり、前月比では2ヶ月連続してプラスとなった。総登録件数は295,986件と前年同月比で21ヶ月連続してマイナスとなり、前月比では6ヶ月ぶりにマイナスに転じた。

令和4年3月の賃貸物件数をみると、新規登録件数は286,834件と前年同月比でふたたびマイナスに転じ、前月比ではふたたびプラスに転じた。成約報告件数は45,935件と前年同月比で2ヶ月連続してマイナスとなり、前月比では3ヶ月連続してプラスとなった。総登録件数は529,917件と前年同月比で22ヶ月連続してプラスとなり、前月比では4ヶ月連続してマイナスとなった。



### R4年3月 売り物件・賃貸物件別件数

<b>新規登録件数</b>	378,723 件	前年同月比 ▲ 10.2 %	↓ 前月比	6.0 %	↔
売り物件	91,889 件	前年同月比 ▲ 21.7 %	↓ 前月比	9.0 %	↔
賃貸物件	286,834 件	前年同月比 ▲ 5.7 %	↘ 前月比	5.1 %	↔
<b>成約報告件数</b>	62,418 件	前年同月比 ▲ 6.1 %	↘ 前月比	18.4 %	↑
売り物件	16,483 件	前年同月比 ▲ 17.3 %	↓ 前月比	10.5 %	↑
賃貸物件	45,935 件	前年同月比 ▲ 1.2 %	→ 前月比	21.6 %	↑
<b>総登録件数</b>	825,903 件	前年同月比 7.6 %	↔ 前月比	▲ 1.4 %	→
売り物件	295,986 件	前年同月比 ▲ 3.0 %	↘ 前月比	▲ 0.9 %	→
賃貸物件	529,917 件	前年同月比 14.5 %	↑ 前月比	▲ 1.73 %	→

凡例: ↑ 10% ~ ↔ 3% ~ 10% → -3% ~ 3% ↘ -10% ~ -3% ↓ ~ -10%

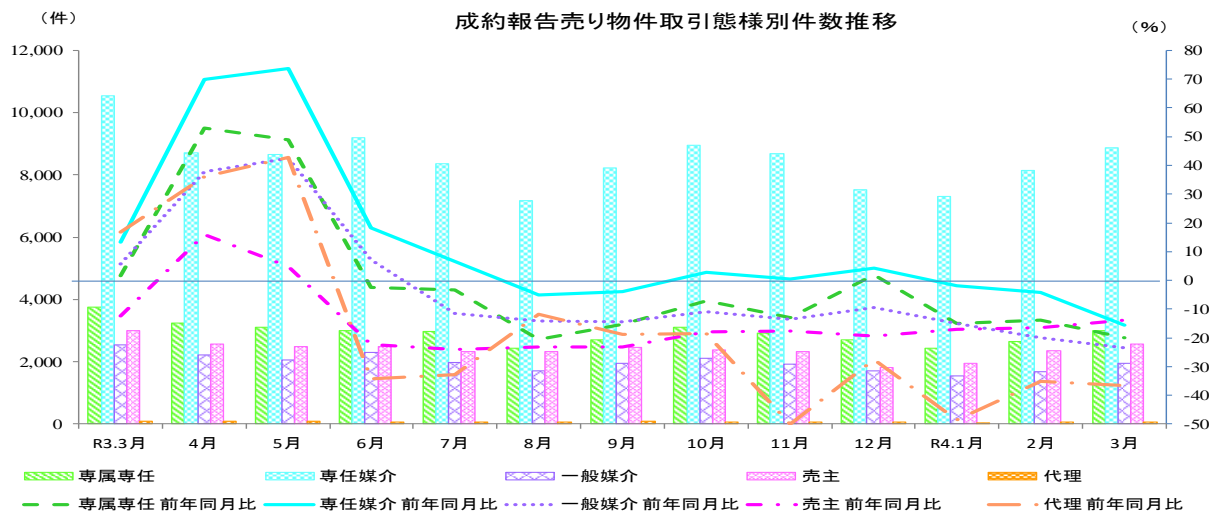
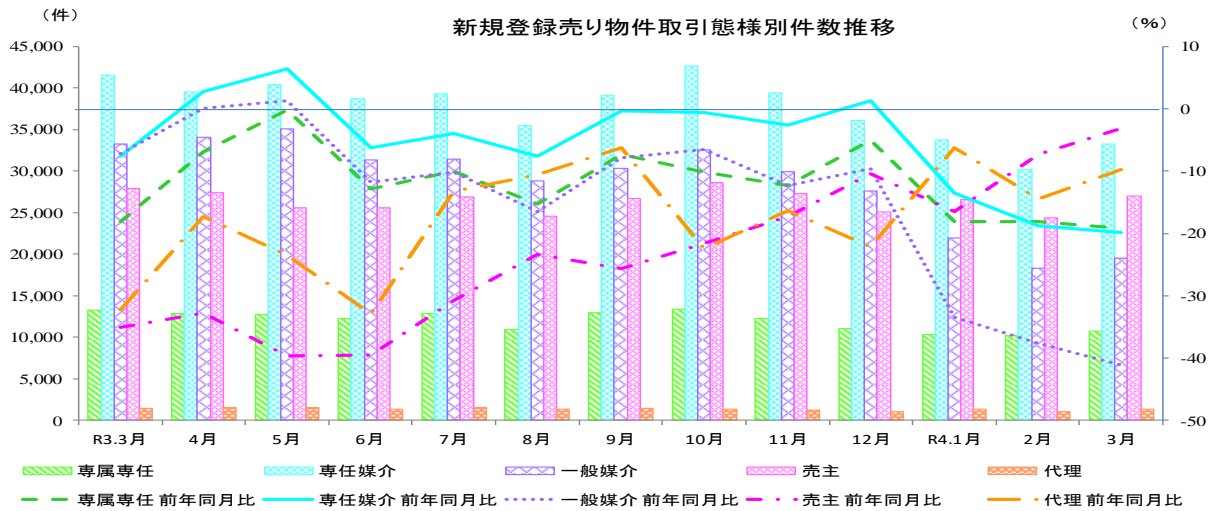
### 3. 売り物件の取引態様別物件数

令和4年3月の新規登録売り物件の取引態様別をみると、専任媒介は36.2%を占め、次いで売主は29.4%を占めている。成約報告売り物件の取引態様別をみると、専任媒介は53.9%を占め、次いで専属専任は18.3%を占めている。

R4年3月 売り物件の取引態様別件数

	取引態様	件数	構成比	前年同月比	前月比
新規登録件数	媒介契約	63,594 件	69.2 %	▲ 27.8 %	↓ 8.1 %
	専属専任	10,762 件	11.7 %	▲ 19.2 %	↓ 5.6 %
	専任媒介	33,251 件	36.2 %	▲ 19.9 %	↓ 9.8 %
	一般媒介	19,581 件	21.3 %	▲ 41.1 %	↓ 6.6 %
	売主	26,987 件	29.4 %	▲ 3.2 %	↑ 10.7 %
	代理	1,308 件	1.4 %	▲ 9.8 %	↑ 22.4 %
成約報告件数	媒介契約	13,839 件	84.0 %	▲ 17.8 %	↓ 10.7 %
	専属専任	3,010 件	18.3 %	▲ 19.9 %	↓ 13.2 %
	専任媒介	8,882 件	53.9 %	▲ 15.7 %	↓ 8.9 %
	一般媒介	1,947 件	11.8 %	▲ 23.5 %	↓ 15.5 %
	売主	2,582 件	15.7 %	▲ 13.9 %	↓ 9.7 %
	代理	62 件	0.4 %	▲ 36.7 %	↓ 5.1 %

凡例: ↑ 10% ~ ↗ 3% ~ 10% → -3% ~ 3% ↘ -10% ~ -3% ↓ ~ -10%



## 指定流通機構実態調査集計、総括表 新規登録件数

		総数	物件種別					
			マンション	一戸建	土地	住宅外全部	住宅外一部	
全	総計件数 [前月比]	378,723 [ 6.0 ]	293,130 [ 4.8 ]	35,802 [ 8.9 ]	23,263 [ 4.8 ]	7,466 [ 11.6 ]	19,062 [ 21.2 ]	
売 り 物 件	総計 [前月比]	91,889 [ 9.0 ]	35,295 [ 10.2 ]	28,487 [ 10.6 ]	22,541 [ 4.6 ]	5,004 [ 12.1 ]	562 [ 15.4 ]	
	北海道 [前月比]	2,426 [ 15.7 ]	888 [ 10.0 ]	614 [ 13.7 ]	654 [ 23.4 ]	264 [ 21.7 ]	6 [ 200.0 ]	
	東北 [前月比]	2,864 [ 6.6 ]	640 [ 6.7 ]	1,142 [ 10.6 ]	917 [ 4.1 ]	156 [ -4.9 ]	9 [ 0.0 ]	
	関東甲信越 [前月比]	5,167 [ 20.3 ]	475 [ 19.6 ]	1,962 [ 35.4 ]	2,391 [ 11.1 ]	330 [ 13.8 ]	9 [ 50.0 ]	
	首都圏 [前月比]	40,743 [ 8.4 ]	21,591 [ 9.7 ]	10,482 [ 8.1 ]	5,989 [ 2.4 ]	2,324 [ 13.5 ]	357 [ 9.5 ]	
	中部4県 [前月比]	3,771 [ 20.4 ]	509 [ 23.2 ]	1,279 [ 14.9 ]	1,782 [ 23.5 ]	190 [ 23.4 ]	11 [ 10.0 ]	
	中部圏 [前月比]	7,354 [ 9.1 ]	1,844 [ 20.1 ]	2,638 [ 9.3 ]	2,539 [ 4.7 ]	309 [ -12.2 ]	24 [ 60.0 ]	
	近畿圏 [前月比]	17,115 [ 8.7 ]	6,267 [ 8.9 ]	6,220 [ 7.8 ]	3,807 [ 8.1 ]	702 [ 16.0 ]	119 [ 32.2 ]	
	中国 [前月比]	3,383 [ 15.1 ]	569 [ 32.3 ]	1,153 [ 15.3 ]	1,506 [ 10.2 ]	151 [ 7.9 ]	4 [ 33.3 ]	
	四国 [前月比]	1,358 [ -21.3 ]	185 [ 5.7 ]	485 [ 23.4 ]	601 [ -43.2 ]	84 [ -14.3 ]	3 [ 50.0 ]	
	九州 [前月比]	7,708 [ 5.1 ]	2,327 [ 4.3 ]	2,512 [ 6.8 ]	2,355 [ 1.0 ]	494 [ 25.1 ]	20 [ -16.7 ]	
	取引態 様別	専属専任 [前月比]	10,762 [ 5.6 ]	4,460 [ 6.5 ]	2,950 [ 7.4 ]	2,633 [ 2.9 ]	682 [ 6.1 ]	37 [ -30.2 ]
	専任媒介 [前月比]	33,251 [ 9.8 ]	12,545 [ 11.5 ]	9,568 [ 11.1 ]	9,278 [ 6.5 ]	1,680 [ 8.2 ]	180 [ 24.1 ]	
	一般媒介 [前月比]	19,581 [ 6.6 ]	6,317 [ 4.8 ]	5,431 [ 12.8 ]	5,889 [ 0.9 ]	1,811 [ 16.1 ]	133 [ 4.7 ]	
	売主 [前月比]	26,987 [ 10.7 ]	11,328 [ 12.8 ]	10,334 [ 10.4 ]	4,441 [ 5.1 ]	692 [ 14.2 ]	192 [ 28.9 ]	
	代理 [前月比]	1,308 [ 22.4 ]	645 [ 27.0 ]	204 [ -6.8 ]	300 [ 32.2 ]	139 [ 36.3 ]	20 [ 53.8 ]	
	賃 地 賃 物 件	総計 [前月比]	286,834 [ 5.1 ]	257,835 [ 4.1 ]	7,315 [ 2.8 ]	722 [ 12.3 ]	2,462 [ 10.7 ]	18,500 [ 21.4 ]
		北海道 [前月比]	2,281 [ 10.9 ]	2,162 [ 10.3 ]	34 [ 30.8 ]	2 [ -66.7 ]	15 [ 15.4 ]	68 [ 30.8 ]
		東北 [前月比]	6,692 [ 9.7 ]	6,359 [ 10.2 ]	127 [ -2.3 ]	14 [ -26.3 ]	37 [ 42.3 ]	155 [ 1.3 ]
		関東甲信越 [前月比]	11,120 [ -8.7 ]	10,442 [ -9.6 ]	252 [ 6.3 ]	47 [ 38.2 ]	90 [ 34.3 ]	289 [ -3.3 ]
首都圏 [前月比]		206,880 [ 6.5 ]	188,927 [ 5.7 ]	3,879 [ 10.2 ]	248 [ -5.0 ]	1,157 [ 12.0 ]	12,669 [ 19.3 ]	
中部4県 [前月比]		2,594 [ 20.6 ]	1,938 [ 20.1 ]	206 [ 7.3 ]	46 [ 76.9 ]	101 [ -5.6 ]	303 [ 42.3 ]	
中部圏 [前月比]		3,500 [ 16.9 ]	2,676 [ 8.4 ]	133 [ 9.9 ]	80 [ 31.1 ]	116 [ 24.7 ]	495 [ 98.0 ]	
近畿圏 [前月比]		41,207 [ -2.2 ]	34,850 [ -4.1 ]	1,832 [ -12.6 ]	164 [ 8.6 ]	719 [ 11.8 ]	3,642 [ 24.8 ]	
中国 [前月比]		1,810 [ 41.0 ]	1,392 [ 59.8 ]	244 [ 8.9 ]	21 [ 16.7 ]	39 [ -31.6 ]	114 [ 0.0 ]	
四国 [前月比]		596 [ -22.0 ]	400 [ -29.2 ]	66 [ -16.5 ]	15 [ -31.8 ]	29 [ -12.1 ]	86 [ 32.3 ]	
九州 [前月比]		10,154 [ 12.1 ]	8,689 [ 11.3 ]	542 [ 10.8 ]	85 [ 88.9 ]	159 [ 4.6 ]	679 [ 20.4 ]	

\* 前月比欄の数値は、対前月増減率である。

\* 「関東甲信越」は、茨城県・栃木県・群馬県・新潟県・山梨県・長野県、「首都圏」は、東京都・千葉県・埼玉県・神奈川県、「中部圏」は、愛知県・岐阜県・三重県、「中部4県」は、富山県・石川県・福井県・静岡県、「近畿圏」は、大阪府・京都府・兵庫県・滋賀県・奈良県・和歌山県をいう。

指定流通機構実態調査 売り物件・新規登録件数 時系列表

	3年3月	3年4月	3年5月	3年6月	3年7月	3年8月	3年9月	3年10月	3年11月	3年12月	4年1月	4年2月	4年3月	一年間計
	件数 (前月比) [前年比]	件数 (前月比) [前年比]	件数 (前月比) [前年比]	件数 (前月比) [前年比]	件数 (前月比) [前年比]	件数 (前月比) [前年比]	件数 (前月比) [前年比]	件数 (前月比) [前年比]	件数 (前月比) [前年比]	件数 (前月比) [前年比]	件数 (前月比) [前年比]	件数 (前月比) [前年比]	件数 (前月比) [前年比]	件数 (前月比) [前年比]
総数	117,421 (10.0) [-17.3]	115,409 (-1.7) [-10.5]	115,529 (0.1) [-11.1]	109,376 (-5.3) [-19.2]	112,052 (2.4) [-14.4]	101,222 (-9.7) [-15.2]	110,620 (9.3) [-10.6]	118,643 (7.3) [-9.4]	110,297 (-7.0) [-10.5]	100,913 (-8.5) [-5.9]	94,030 (-6.8) [-20.3]	84,288 (-10.4) [-21.0]	91,889 (9.0) [-21.7]	1,264,268
北海道	2,267 (15.1) [-13.5]	2,431 (7.2) [-15.4]	2,360 (-2.9) [-4.6]	2,358 (-0.1) [-10.5]	2,693 (14.2) [-11.9]	2,229 (-17.2) [-1.3]	2,625 (17.8) [0.4]	2,809 (7.0) [1.5]	2,513 (-10.5) [1.3]	2,271 (-9.6) [14.5]	2,124 (-6.5) [-4.1]	2,096 (-1.3) [6.4]	2,426 (15.7) [7.0]	28,935 (2.3)
東北	3,170 (15.4) [-19.1]	3,182 (0.4) [-17.5]	2,859 (-10.2) [-18.6]	3,046 (6.5) [-13.4]	2,999 (-1.5) [-15.7]	2,734 (-8.8) [-12.2]	3,154 (15.4) [-9.1]	3,394 (7.6) [-11.2]	3,037 (-10.5) [-13.0]	2,804 (-7.7) [-16.4]	2,906 (3.6) [-24.2]	2,687 (-7.5) [-2.2]	2,864 (6.6) [-9.7]	35,666 (2.8)
関東甲信越	4,682 (10.5) [-8.1]	4,646 (-0.8) [-14.3]	4,803 (3.4) [-8.4]	4,686 (-2.4) [-2.1]	4,888 (4.3) [0.6]	4,169 (-14.7) [-5.3]	4,279 (2.6) [-28.2]	5,068 (18.4) [-9.8]	4,529 (-10.6) [-10.7]	4,052 (-10.5) [0.8]	5,034 (24.2) [-4.8]	4,294 (-14.7) [1.3]	5,167 (20.3) [10.4]	55,615 (4.4)
圏	38,057 (6.0) [-30.9]	37,980 (-0.2) [-17.8]	34,656 (-8.8) [-25.0]	34,714 (0.2) [-33.6]	37,069 (6.8) [-23.9]	32,003 (-13.7) [-17.8]	36,294 (13.4) [-17.5]	39,851 (9.8) [-14.9]	37,450 (-6.0) [-11.9]	33,328 (-11.0) [-1.5]	37,049 (11.2) [-3.3]	37,596 (1.5) [4.7]	40,743 (8.4) [7.1]	438,733 (34.7)
別	4,448 (18.6) [5.1]	5,816 (30.8) [49.7]	7,204 (23.9) [90.7]	4,834 (-32.9) [25.7]	3,804 (-21.3) [1.4]	3,738 (-1.7) [11.7]	4,044 (8.2) [-1.1]	4,013 (-0.8) [-7.7]	3,738 (-6.9) [-8.1]	3,145 (-15.9) [-11.8]	3,836 (22.0) [-20.4]	3,133 (-18.3) [-16.5]	3,771 (20.4) [-15.2]	51,076 (4.0)
内	7,168 (12.8) [-15.1]	7,244 (1.1) [-1.1]	7,089 (-2.1) [-13.3]	6,737 (-5.0) [-13.4]	6,599 (-2.0) [-9.8]	6,085 (-7.8) [-12.7]	6,836 (12.3) [-11.2]	7,029 (2.8) [-9.7]	6,686 (-4.9) [-9.3]	5,943 (-11.1) [-7.7]	7,190 (21.0) [-4.4]	6,741 (-6.2) [6.1]	7,354 (9.1) [2.6]	81,533 (6.4)
近畿圏	20,240 (7.9) [-18.9]	18,795 (-7.1) [-11.0]	18,262 (-2.8) [-15.4]	18,108 (-0.8) [-19.8]	18,620 (2.8) [-10.2]	16,485 (-11.5) [-15.2]	18,691 (13.4) [-10.4]	19,961 (6.8) [-8.5]	17,554 (-12.1) [-10.5]	16,311 (-7.1) [-9.5]	17,301 (6.1) [-11.0]	15,742 (-9.0) [-16.1]	17,115 (8.7) [-15.4]	212,945 (16.8)
中国	8,083 (25.9) [12.5]	6,755 (-16.4) [-9.0]	7,309 (8.2) [0.2]	6,852 (-6.3) [-2.1]	6,967 (1.7) [-8.4]	6,356 (-8.8) [-13.1]	6,594 (3.7) [-0.2]	7,863 (19.2) [2.0]	7,003 (-10.9) [4.4]	6,855 (-2.1) [1.8]	3,613 (-47.3) [-49.4]	2,940 (-18.6) [-54.2]	3,383 (15.1) [-58.1]	72,490 (5.7)
四国	3,916 (-2.4) [5.8]	4,107 (4.9) [-13.6]	5,189 (26.3) [35.8]	3,948 (-23.9) [1.0]	3,874 (-1.9) [4.8]	4,185 (8.0) [-18.1]	3,780 (-9.7) [-1.1]	3,892 (3.0) [-3.6]	4,380 (12.5) [0.2]	3,485 (-20.4) [-5.0]	4,361 (25.1) [21.9]	1,726 (-60.4) [-57.0]	1,358 (-21.3) [-65.3]	44,285 (3.5)
九州	25,390 (12.4) [-5.5]	24,453 (-3.7) [-6.3]	25,798 (5.5) [-7.4]	24,093 (-6.6) [-11.0]	24,539 (1.9) [-11.0]	23,238 (-5.3) [-18.6]	24,323 (4.7) [-1.1]	24,763 (1.8) [-5.6]	23,407 (-5.5) [-15.3]	22,719 (-2.9) [-11.2]	10,616 (-53.3) [-58.9]	7,333 (-30.9) [-67.5]	7,708 (5.1) [-69.6]	242,990 (19.2)
取	13,314 (6.9) [-18.1]	12,834 (-3.6) [-7.0]	12,799 (-0.3) [-0.2]	12,298 (-3.9) [-12.9]	12,834 (4.4) [-10.0]	10,920 (-14.9) [-15.3]	12,949 (18.6) [-7.3]	13,414 (3.6) [-10.1]	12,259 (-8.6) [-12.3]	11,028 (-10.0) [-5.0]	10,292 (-6.7) [-18.1]	10,191 (-1.0) [-18.1]	10,762 (5.6) [-19.2]	142,580 (11.3)
引	41,515 (11.4) [-7.6]	39,570 (-4.7) [2.8]	40,433 (2.2) [6.5]	38,777 (-4.1) [-6.2]	39,326 (1.4) [-3.9]	35,511 (-9.7) [-7.6]	39,166 (10.3) [-0.3]	42,661 (8.9) [-0.6]	39,442 (-7.5) [-2.7]	36,129 (-8.4) [1.3]	33,737 (-6.6) [1.3]	30,279 (-10.2) [-18.7]	33,251 (9.8) [-19.9]	448,282 (35.5)
態	33,272 (12.9) [-7.1]	34,033 (2.3) [0.1]	35,128 (3.2) [1.4]	31,349 (-10.8) [-11.8]	31,423 (0.2) [-10.1]	28,797 (-8.4) [-16.5]	30,367 (5.5) [-7.9]	32,602 (7.4) [-6.6]	29,950 (-8.1) [-12.3]	27,603 (-7.8) [-9.6]	22,006 (-20.3) [-33.4]	18,366 (-16.5) [-37.7]	19,581 (6.6) [-41.1]	341,205 (27.0)
別	27,870 (5.9) [-35.0]	27,379 (-1.8) [-32.8]	25,630 (-6.4) [-39.7]	25,586 (-0.2) [-39.6]	26,928 (5.2) [-30.8]	24,635 (-8.5) [-23.3]	26,695 (8.4) [-25.7]	28,628 (7.2) [-21.6]	27,355 (-4.4) [-17.3]	25,070 (-8.4) [-10.4]	26,599 (6.1) [-16.4]	24,383 (-8.3) [-7.4]	26,987 (10.7) [-3.2]	315,875 (25.0)
代理	1,450 (16.1) [-32.2]	1,593 (9.9) [-17.3]	1,539 (-3.4) [-23.5]	1,366 (-11.2) [-32.9]	1,541 (12.8) [-13.2]	1,359 (-11.8) [-10.6]	1,443 (6.2) [-6.2]	1,338 (-7.3) [-22.3]	1,291 (-3.5) [-16.4]	1,083 (-16.1) [-22.1]	1,396 (28.9) [-6.2]	1,069 (-23.4) [-14.4]	1,308 (22.4) [-9.8]	16,326 (1.3)
物	35,899 (7.4) [-19.0]	34,604 (-3.6) [-6.5]	33,234 (-4.0) [-10.8]	32,724 (-1.5) [-20.9]	34,919 (6.7) [-12.4]	30,990 (-11.3) [-11.8]	34,581 (11.6) [-11.1]	37,711 (9.1) [-6.6]	35,200 (-6.7) [-6.0]	32,223 (-8.5) [-4.1]	33,376 (3.6) [-6.9]	32,020 (-4.1) [-4.2]	35,295 (10.2) [-1.7]	406,877 (32.2)
件	37,836 (11.2) [-19.4]	37,862 (0.1) [-13.5]	37,831 (-0.1) [-15.9]	35,980 (-4.9) [-20.8]	35,929 (-0.1) [-16.0]	31,988 (-11.0) [-17.1]	35,686 (11.6) [-9.0]	38,691 (8.4) [-7.5]	35,261 (-8.9) [-9.5]	32,328 (-8.3) [-4.5]	29,985 (-7.2) [-21.6]	25,760 (-14.1) [-24.3]	28,487 (10.6) [-24.7]	405,788 (32.1)
種	37,160 (10.7) [-14.8]	36,608 (-1.5) [-12.4]	38,222 (4.4) [-7.1]	34,321 (-10.2) [-18.3]	34,863 (1.6) [-16.1]	32,424 (-7.0) [-18.3]	34,272 (5.7) [-12.8]	35,524 (3.7) [-15.6]	33,796 (-4.9) [-16.6]	30,942 (-8.4) [-9.4]	25,142 (-18.7) [-33.4]	21,558 (-14.3) [-35.8]	22,541 (4.6) [-39.3]	380,213 (30.1)
別	5,939 (14.2) [-8.7]	5,768 (-2.9) [-1.4]	5,707 (-1.1) [-4.9]	5,797 (1.6) [-4.1]	5,819 (0.4) [-5.5]	5,424 (-6.8) [-1.1]	5,559 (2.5) [-3.4]	6,149 (10.6) [0.8]	5,447 (-11.4) [-7.1]	4,934 (-9.4) [-4.7]	4,954 (0.4) [-10.7]	4,463 (-9.9) [-14.2]	5,004 (12.1) [-15.7]	65,025 (5.1)
住宅外(一部)	587 (13.1) [-14.1]	567 (-3.4) [12.1]	535 (-5.6) [-11.4]	554 (3.6) [3.2]	522 (-5.8) [1.4]	396 (-24.1) [-21.4]	522 (31.8) [2.8]	568 (8.8) [-1.2]	593 (4.4) [13.0]	486 (-18.0) [8.2]	573 (17.9) [-2.7]	487 (-15.0) [-6.2]	562 (15.4) [-4.3]	6,365 (0.5)

※ 構成比は、四捨五入による端数処理のため内数の合計が100%にならないことがある

指定流通機構実態調査集計、総括表 地域別取引態様別売物件月間新規登録件数

地域	取引態様	総数	物 件 種 別				
			マンション	一戸建	土 地	住宅外全部	住宅外一部
北海道	専属専任 [構成比]	213 [ 8.8]	79 [ 8.9]	50 [ 8.1]	55 [ 8.4]	27 [ 10.2]	2 [ 33.3]
	専任媒介 [構成比]	1,233 [ 50.8]	378 [ 42.6]	343 [ 55.9]	371 [ 56.7]	138 [ 52.3]	3 [ 50.0]
	一般媒介 [構成比]	450 [ 18.5]	115 [ 13.0]	114 [ 18.6]	143 [ 21.9]	77 [ 29.2]	1 [ 16.7]
	売主 [構成比]	517 [ 21.3]	312 [ 35.1]	106 [ 17.3]	81 [ 12.4]	18 [ 6.8]	0 [ 0.0]
	代理 [構成比]	13 [ 0.5]	4 [ 0.5]	1 [ 0.2]	4 [ 0.6]	4 [ 1.5]	0 [ 0.0]
	合 計 [地域比]	2,426 [ 2.6]	888 [ 2.5]	614 [ 2.2]	654 [ 2.9]	264 [ 5.3]	6 [ 1.1]
東北	専属専任 [構成比]	204 [ 7.1]	43 [ 6.7]	76 [ 6.7]	71 [ 7.7]	13 [ 8.3]	1 [ 11.1]
	専任媒介 [構成比]	1,128 [ 39.4]	280 [ 43.8]	439 [ 38.4]	357 [ 38.9]	47 [ 30.1]	5 [ 55.6]
	一般媒介 [構成比]	735 [ 25.7]	82 [ 12.8]	234 [ 20.5]	327 [ 35.7]	90 [ 57.7]	2 [ 22.2]
	売主 [構成比]	791 [ 27.6]	234 [ 36.6]	390 [ 34.2]	160 [ 17.4]	6 [ 3.8]	1 [ 11.1]
	代理 [構成比]	6 [ 0.2]	1 [ 0.2]	3 [ 0.3]	2 [ 0.2]	0 [ 0.0]	0 [ 0.0]
	合 計 [地域比]	2,864 [ 3.1]	640 [ 1.8]	1,142 [ 4.0]	917 [ 4.1]	156 [ 3.1]	9 [ 1.6]
関東甲信越	専属専任 [構成比]	316 [ 6.1]	35 [ 7.4]	62 [ 3.2]	161 [ 6.7]	58 [ 17.6]	0 [ 0.0]
	専任媒介 [構成比]	1,748 [ 33.8]	207 [ 43.6]	572 [ 29.2]	854 [ 35.7]	111 [ 33.6]	4 [ 44.4]
	一般媒介 [構成比]	1,579 [ 30.6]	121 [ 25.5]	569 [ 29.0]	775 [ 32.4]	109 [ 33.0]	5 [ 55.6]
	売主 [構成比]	1,468 [ 28.4]	108 [ 22.7]	752 [ 38.3]	564 [ 23.6]	44 [ 13.3]	0 [ 0.0]
	代理 [構成比]	56 [ 1.1]	4 [ 0.8]	7 [ 0.4]	37 [ 1.5]	8 [ 2.4]	0 [ 0.0]
	合 計 [地域比]	5,167 [ 5.6]	475 [ 1.3]	1,962 [ 6.9]	2,391 [ 10.6]	330 [ 6.6]	9 [ 1.6]
首都圏	専属専任 [構成比]	4,751 [ 11.7]	2,780 [ 12.9]	838 [ 8.0]	791 [ 13.2]	318 [ 13.7]	24 [ 6.7]
	専任媒介 [構成比]	13,470 [ 33.1]	6,606 [ 30.6]	3,626 [ 34.6]	2,446 [ 40.8]	707 [ 30.4]	85 [ 23.8]
	一般媒介 [構成比]	5,723 [ 14.0]	3,025 [ 14.0]	1,009 [ 9.6]	857 [ 14.3]	758 [ 32.6]	74 [ 20.7]
	売主 [構成比]	15,865 [ 38.9]	8,613 [ 39.9]	4,879 [ 46.5]	1,770 [ 29.6]	448 [ 19.3]	155 [ 43.4]
	代理 [構成比]	934 [ 2.3]	567 [ 2.6]	130 [ 1.2]	125 [ 2.1]	93 [ 4.0]	19 [ 5.3]
	合 計 [地域比]	40,743 [ 44.3]	21,591 [ 61.2]	10,482 [ 36.8]	5,989 [ 26.6]	2,324 [ 46.4]	357 [ 63.5]
中部四県	専属専任 [構成比]	340 [ 9.0]	23 [ 4.5]	91 [ 7.1]	196 [ 11.0]	28 [ 14.7]	2 [ 18.2]
	専任媒介 [構成比]	1,444 [ 38.3]	222 [ 43.6]	458 [ 35.8]	692 [ 38.8]	65 [ 34.2]	7 [ 63.6]
	一般媒介 [構成比]	1,252 [ 33.2]	166 [ 32.6]	377 [ 29.5]	623 [ 35.0]	84 [ 44.2]	2 [ 18.2]
	売主 [構成比]	693 [ 18.4]	93 [ 18.3]	346 [ 27.1]	244 [ 13.7]	10 [ 5.3]	0 [ 0.0]
	代理 [構成比]	42 [ 1.1]	5 [ 1.0]	7 [ 0.5]	27 [ 1.5]	3 [ 1.6]	0 [ 0.0]
	合 計 [地域比]	3,771 [ 4.1]	509 [ 1.4]	1,279 [ 4.5]	1,782 [ 7.9]	190 [ 3.8]	11 [ 2.0]
中部圏	専属専任 [構成比]	660 [ 9.0]	215 [ 11.7]	193 [ 7.3]	205 [ 8.1]	44 [ 14.2]	3 [ 12.5]
	専任媒介 [構成比]	2,593 [ 35.3]	778 [ 42.2]	680 [ 25.8]	1,026 [ 40.4]	98 [ 31.7]	11 [ 45.8]
	一般媒介 [構成比]	1,933 [ 26.3]	451 [ 24.5]	414 [ 15.7]	920 [ 36.2]	143 [ 46.3]	5 [ 20.8]
	売主 [構成比]	2,152 [ 29.3]	398 [ 21.6]	1,349 [ 51.1]	377 [ 14.8]	23 [ 7.4]	5 [ 20.8]
	代理 [構成比]	16 [ 0.2]	2 [ 0.1]	2 [ 0.1]	11 [ 0.4]	1 [ 0.3]	0 [ 0.0]
	合 計 [地域比]	7,354 [ 8.0]	1,844 [ 5.2]	2,638 [ 9.3]	2,539 [ 11.3]	309 [ 6.2]	24 [ 4.3]
近畿圏	専属専任 [構成比]	3,196 [ 18.7]	982 [ 15.7]	1,376 [ 22.1]	725 [ 19.0]	109 [ 15.5]	4 [ 3.4]
	専任媒介 [構成比]	6,160 [ 36.0]	2,604 [ 41.6]	1,835 [ 29.5]	1,470 [ 38.6]	198 [ 28.2]	53 [ 44.5]
	一般媒介 [構成比]	4,089 [ 23.9]	1,507 [ 24.0]	1,431 [ 23.0]	851 [ 22.4]	266 [ 37.9]	34 [ 28.6]
	売主 [構成比]	3,485 [ 20.4]	1,127 [ 18.0]	1,535 [ 24.7]	693 [ 18.2]	103 [ 14.7]	27 [ 22.7]
	代理 [構成比]	185 [ 1.1]	47 [ 0.7]	43 [ 0.7]	68 [ 1.8]	26 [ 3.7]	1 [ 0.8]
	合 計 [地域比]	17,115 [ 18.6]	6,267 [ 17.8]	6,220 [ 21.8]	3,807 [ 16.9]	702 [ 14.0]	119 [ 21.2]
中国	専属専任 [構成比]	271 [ 8.0]	45 [ 7.9]	69 [ 6.0]	143 [ 9.5]	14 [ 9.3]	0 [ 0.0]
	専任媒介 [構成比]	1,905 [ 56.3]	360 [ 63.3]	622 [ 53.9]	834 [ 55.4]	86 [ 57.0]	3 [ 75.0]
	一般媒介 [構成比]	826 [ 24.4]	103 [ 18.1]	295 [ 25.6]	380 [ 25.2]	47 [ 31.1]	1 [ 25.0]
	売主 [構成比]	375 [ 11.1]	61 [ 10.7]	166 [ 14.4]	144 [ 9.6]	4 [ 2.6]	0 [ 0.0]
	代理 [構成比]	6 [ 0.2]	0 [ 0.0]	1 [ 0.1]	5 [ 0.3]	0 [ 0.0]	0 [ 0.0]
	合 計 [地域比]	3,383 [ 3.7]	569 [ 1.6]	1,153 [ 4.0]	1,506 [ 6.7]	151 [ 3.0]	4 [ 0.7]
四国	専属専任 [構成比]	156 [ 11.5]	13 [ 7.0]	42 [ 8.7]	86 [ 14.3]	15 [ 17.9]	0 [ 0.0]
	専任媒介 [構成比]	548 [ 40.4]	106 [ 57.3]	148 [ 30.5]	260 [ 43.3]	31 [ 36.9]	3 [ 100.0]
	一般媒介 [構成比]	422 [ 31.1]	50 [ 27.0]	163 [ 33.6]	173 [ 28.8]	36 [ 42.9]	0 [ 0.0]
	売主 [構成比]	226 [ 16.6]	16 [ 8.6]	131 [ 27.0]	78 [ 13.0]	1 [ 1.2]	0 [ 0.0]
	代理 [構成比]	6 [ 0.4]	0 [ 0.0]	1 [ 0.2]	4 [ 0.7]	1 [ 1.2]	0 [ 0.0]
	合 計 [地域比]	1,358 [ 1.5]	185 [ 0.5]	485 [ 1.7]	601 [ 2.7]	84 [ 1.7]	3 [ 0.5]
九州	専属専任 [構成比]	655 [ 8.5]	245 [ 10.5]	153 [ 6.1]	200 [ 8.5]	56 [ 11.3]	1 [ 5.0]
	専任媒介 [構成比]	3,022 [ 39.2]	1,004 [ 43.1]	845 [ 33.6]	968 [ 41.1]	199 [ 40.3]	6 [ 30.0]
	一般媒介 [構成比]	2,572 [ 33.4]	697 [ 30.0]	825 [ 32.8]	840 [ 35.7]	201 [ 40.7]	9 [ 45.0]
	売主 [構成比]	1,415 [ 18.4]	366 [ 15.7]	680 [ 27.1]	330 [ 14.0]	35 [ 7.1]	4 [ 20.0]
	代理 [構成比]	44 [ 0.6]	15 [ 0.6]	9 [ 0.4]	17 [ 0.7]	3 [ 0.6]	0 [ 0.0]
	合 計 [地域比]	7,708 [ 8.4]	2,327 [ 6.6]	2,512 [ 8.8]	2,355 [ 10.4]	494 [ 9.9]	20 [ 3.6]
全国	専属専任 [構成比]	10,762 [ 11.7]	4,460 [ 12.6]	2,950 [ 10.4]	2,633 [ 11.7]	682 [ 13.6]	37 [ 6.6]
	専任媒介 [構成比]	33,251 [ 36.2]	12,545 [ 35.5]	9,568 [ 33.6]	9,278 [ 41.2]	1,680 [ 33.6]	180 [ 32.0]
	一般媒介 [構成比]	19,581 [ 21.3]	6,317 [ 17.9]	5,431 [ 19.1]	5,889 [ 26.1]	1,811 [ 36.2]	133 [ 23.7]
	売主 [構成比]	26,987 [ 29.4]	11,328 [ 32.1]	10,334 [ 36.3]	4,441 [ 19.7]	692 [ 13.8]	192 [ 34.2]
	代理 [構成比]	1,308 [ 1.4]	645 [ 1.8]	204 [ 0.7]	300 [ 1.3]	139 [ 2.8]	20 [ 3.6]
	合 計	91,889	35,295	28,487	22,541	5,004	562

※構成比とは地域内の取引態様別構成比で、地域比とは全国合計の地域別シェアである。

※構成比・地域比は、四捨五入による端数処理のため内数の合計が100%にならないことがある。

## 指定流通機構実態調査集計、総括表 月間成約件数

		総 数	物 件 種 別				
			マンション	一 戸 建	土 地	住宅外全部	住宅外一部
全	総計件数	62,418	48,155	7,112	3,720	802	2,629
	[前月比]	[ 18.4 ]	[ 19.5 ]	[ 10.9 ]	[ 21.0 ]	[ 14.7 ]	[ 19.4 ]
売 地	総 計	16,483	6,732	5,636	3,641	417	57
	[前月比]	[ 10.5 ]	[ 7.1 ]	[ 8.2 ]	[ 20.2 ]	[ 17.1 ]	[ 54.1 ]
り 域	北海道	699	232	240	186	40	1
	[前月比]	[ 11.1 ]	[ 1.3 ]	[ 13.2 ]	[ 25.7 ]	[ 2.6 ]	[ 0.0 ]
物 別	東北	712	150	306	230	24	2
	[前月比]	[ 18.5 ]	[ 0.0 ]	[ 16.3 ]	[ 35.3 ]	[ 33.3 ]	[ - ]
件 別	関東甲信越	648	89	291	250	18	0
	[前月比]	[ 4.2 ]	[ 9.9 ]	[ 3.6 ]	[ 4.6 ]	[ -10.0 ]	[ -100.0 ]
取 引 態 様 別	首都圏	6,279	3,429	1,702	960	150	38
	[前月比]	[ 8.6 ]	[ 8.7 ]	[ 4.4 ]	[ 12.3 ]	[ 21.0 ]	[ 111.1 ]
地 域	中部4県	527	84	231	196	16	0
	[前月比]	[ 22.0 ]	[ -14.3 ]	[ 24.9 ]	[ 44.1 ]	[ 33.3 ]	[ -100.0 ]
物 別	中部圏	1,469	428	497	501	39	4
	[前月比]	[ 12.5 ]	[ -6.3 ]	[ 19.5 ]	[ 25.9 ]	[ 11.4 ]	[ - ]
件 別	近畿圏	3,989	1,643	1,552	726	59	9
	[前月比]	[ 10.3 ]	[ 7.2 ]	[ 8.8 ]	[ 22.6 ]	[ 7.3 ]	[ 0.0 ]
取 引 態 様 別	中国	588	170	222	176	20	0
	[前月比]	[ 9.7 ]	[ 14.9 ]	[ 0.9 ]	[ 18.9 ]	[ 11.1 ]	[ -100.0 ]
地 域	四国	217	46	108	55	8	0
	[前月比]	[ 21.9 ]	[ 27.8 ]	[ 38.5 ]	[ -3.5 ]	[ 33.3 ]	[ -100.0 ]
物 別	九州	1,355	461	487	361	43	3
	[前月比]	[ 11.6 ]	[ 15.3 ]	[ -1.4 ]	[ 25.8 ]	[ 48.3 ]	[ -25.0 ]
取 引 態 様 別	専属専任	3,010	1,490	893	552	73	2
	[前月比]	[ 13.2 ]	[ 9.5 ]	[ 19.7 ]	[ 13.1 ]	[ 21.7 ]	[ -60.0 ]
地 域	専任媒介	8,882	4,053	2,588	2,008	210	23
	[前月比]	[ 8.9 ]	[ 7.2 ]	[ 4.5 ]	[ 19.7 ]	[ 1.9 ]	[ 43.8 ]
件 別	一般媒介	1,947	621	627	589	104	6
	[前月比]	[ 15.5 ]	[ 3.3 ]	[ 11.0 ]	[ 31.2 ]	[ 67.7 ]	[ -33.3 ]
取 引 態 様 別	売主	2,582	546	1,508	473	29	26
	[前月比]	[ 9.7 ]	[ 5.0 ]	[ 7.9 ]	[ 17.7 ]	[ 11.5 ]	[ 271.4 ]
地 域	代理	62	22	20	19	1	0
	[前月比]	[ 5.1 ]	[ -4.3 ]	[ -4.8 ]	[ 46.2 ]	[ -50.0 ]	[ - ]
取 引 態 様 別	総 計	45,935	41,423	1,476	79	385	2,572
	[前月比]	[ 21.6 ]	[ 21.7 ]	[ 22.2 ]	[ 75.6 ]	[ 12.2 ]	[ 18.8 ]
地 域	北海道	135	119	6	1	2	7
	[前月比]	[ 66.7 ]	[ 77.6 ]	[ 50.0 ]	[ - ]	[ 100.0 ]	[ -22.2 ]
物 別	東北	638	554	45	4	5	30
	[前月比]	[ 29.7 ]	[ 29.7 ]	[ 40.6 ]	[ - ]	[ -28.6 ]	[ 15.4 ]
取 引 態 様 別	関東甲信越	700	552	46	3	10	89
	[前月比]	[ 30.4 ]	[ 31.7 ]	[ -16.4 ]	[ 0.0 ]	[ -33.3 ]	[ 97.8 ]
地 域	首都圏	23,481	21,237	533	38	144	1,529
	[前月比]	[ 14.4 ]	[ 13.8 ]	[ 7.9 ]	[ 81.0 ]	[ 30.9 ]	[ 24.3 ]
物 別	中部4県	436	339	20	1	17	59
	[前月比]	[ 20.1 ]	[ 23.7 ]	[ -39.4 ]	[ -50.0 ]	[ 240.0 ]	[ 20.4 ]
取 引 態 様 別	中部圏	206	163	14	3	11	15
	[前月比]	[ -6.8 ]	[ -5.2 ]	[ 40.0 ]	[ 0.0 ]	[ 120.0 ]	[ -51.6 ]
地 域	近畿圏	16,990	15,516	637	23	160	654
	[前月比]	[ 33.9 ]	[ 35.1 ]	[ 53.1 ]	[ 130.0 ]	[ -1.2 ]	[ 7.0 ]
物 別	中国	241	175	32	2	5	27
	[前月比]	[ 23.0 ]	[ 14.4 ]	[ 52.4 ]	[ - ]	[ -37.5 ]	[ 92.9 ]
取 引 態 様 別	四国	113	78	18	0	4	13
	[前月比]	[ 21.5 ]	[ 16.4 ]	[ 28.6 ]	[ - ]	[ 0.0 ]	[ 62.5 ]
地 域	九州	2,995	2,690	125	4	27	149
	[前月比]	[ 15.1 ]	[ 17.1 ]	[ -3.1 ]	[ -33.3 ]	[ 3.8 ]	[ 4.9 ]

\* 成約件数は成約報告のあった件数である。

## 指定流通機構実態調査集計、総括表 当月末総登録件数

		総 数	物 件 種 別				
			マンション	一 戸 建	土 地	住宅外全部	住宅外一部
全	総計件数 [前月比]	825,903 [-1.4]	505,252 [-1.4]	101,775 [-0.5]	120,744 [-1.9]	26,494 [-1.3]	71,638 [-2.2]
売	総 計 [前月比]	295,986 [-0.9]	73,205 [0.3]	86,959 [-0.8]	116,909 [-1.9]	17,366 [0.3]	1,547 [-0.1]
	地	北海道 [前月比]	10,011 [-0.8]	1,964 [-0.3]	2,583 [-2.1]	4,530 [-1.0]	913 [3.6]
り	東北 [前月比]	14,055 [-1.9]	1,500 [-1.6]	4,623 [-1.4]	7,078 [-2.4]	808 [-0.2]	46 [4.5]
	関東甲信越 [前月比]	28,111 [-0.5]	1,568 [-3.4]	7,630 [0.5]	17,380 [-0.8]	1,473 [1.0]	60 [1.7]
域	首都圏 [前月比]	89,513 [0.1]	37,879 [1.1]	24,075 [0.5]	20,383 [-2.4]	6,358 [0.9]	818 [-1.8]
	中部4県 [前月比]	18,290 [-2.1]	1,335 [-1.6]	5,269 [-2.8]	10,723 [-1.6]	924 [-4.5]	39 [5.4]
物	中部圏 [前月比]	28,372 [-0.3]	4,911 [1.0]	8,110 [-0.3]	14,010 [-0.6]	1,270 [-2.3]	71 [7.6]
	近畿圏 [前月比]	54,954 [-1.7]	15,703 [0.2]	19,452 [-1.6]	16,749 [-4.1]	2,689 [1.4]	361 [3.4]
別	中国 [前月比]	14,548 [-0.8]	1,208 [1.6]	4,522 [-1.0]	8,132 [-1.0]	667 [-1.3]	19 [-9.5]
	四国 [前月比]	7,418 [2.2]	596 [1.5]	1,888 [1.6]	4,513 [2.1]	408 [6.5]	13 [30.0]
件	九州 [前月比]	30,714 [-3.1]	6,541 [-3.2]	8,807 [-2.7]	13,411 [-3.5]	1,856 [-1.4]	99 [-9.2]
	取引態 様別	専属専任 [前月比]	34,398 [-1.5]	10,506 [0.1]	9,718 [-2.0]	11,972 [-2.7]	2,051 [-0.7]
貸	専任媒介 [前月比]	112,802 [-1.1]	30,568 [0.1]	30,635 [-0.9]	45,197 [-2.2]	5,845 [0.3]	557 [3.3]
	一般媒介 [前月比]	90,220 [-1.2]	18,842 [-0.8]	20,666 [-1.8]	42,715 [-1.4]	7,432 [0.2]	565 [-1.2]
貸	売主 [前月比]	55,020 [0.2]	12,196 [2.5]	25,292 [0.7]	15,718 [-2.3]	1,593 [1.5]	221 [-5.2]
	代理 [前月比]	3,546 [-0.4]	1,093 [-0.4]	648 [-3.9]	1,307 [-0.2]	445 [3.5]	53 [6.0]
物	総 計 [前月比]	529,917 [-1.7]	432,047 [-1.7]	14,816 [1.2]	3,835 [-1.8]	9,128 [-4.3]	70,091 [-2.2]
	地	北海道 [前月比]	3,330 [-1.2]	2,837 [-1.8]	93 [1.1]	46 [-9.8]	58 [13.7]
貸	東北 [前月比]	9,350 [-1.1]	7,747 [-0.8]	308 [-4.3]	127 [-0.8]	165 [-1.8]	1,003 [-2.6]
	関東甲信越 [前月比]	16,027 [-0.7]	13,194 [0.1]	579 [1.0]	316 [0.6]	403 [1.3]	1,535 [-8.4]
域	首都圏 [前月比]	354,102 [-1.8]	297,973 [-1.9]	5,444 [2.5]	1,203 [-1.4]	3,770 [-4.1]	45,712 [-1.5]
	中部4県 [前月比]	7,449 [-1.9]	4,910 [-2.8]	537 [0.2]	200 [-1.0]	508 [-7.6]	1,294 [3.2]
物	中部圏 [前月比]	6,933 [0.0]	4,328 [-2.8]	287 [7.5]	411 [2.2]	323 [6.6]	1,584 [5.2]
	近畿圏 [前月比]	104,248 [-0.5]	81,399 [0.3]	5,598 [2.2]	818 [-5.9]	2,744 [-6.6]	13,689 [-4.1]
件	中国 [前月比]	4,444 [0.6]	2,688 [5.0]	538 [-6.3]	146 [-2.7]	261 [-9.1]	811 [-4.0]
	四国 [前月比]	2,294 [-5.8]	1,328 [-8.2]	253 [-4.9]	93 [1.1]	150 [-6.3]	470 [0.2]
別	九州 [前月比]	21,740 [-8.0]	15,643 [-9.4]	1,179 [-3.4]	475 [-0.4]	746 [-0.4]	3,697 [-5.7]