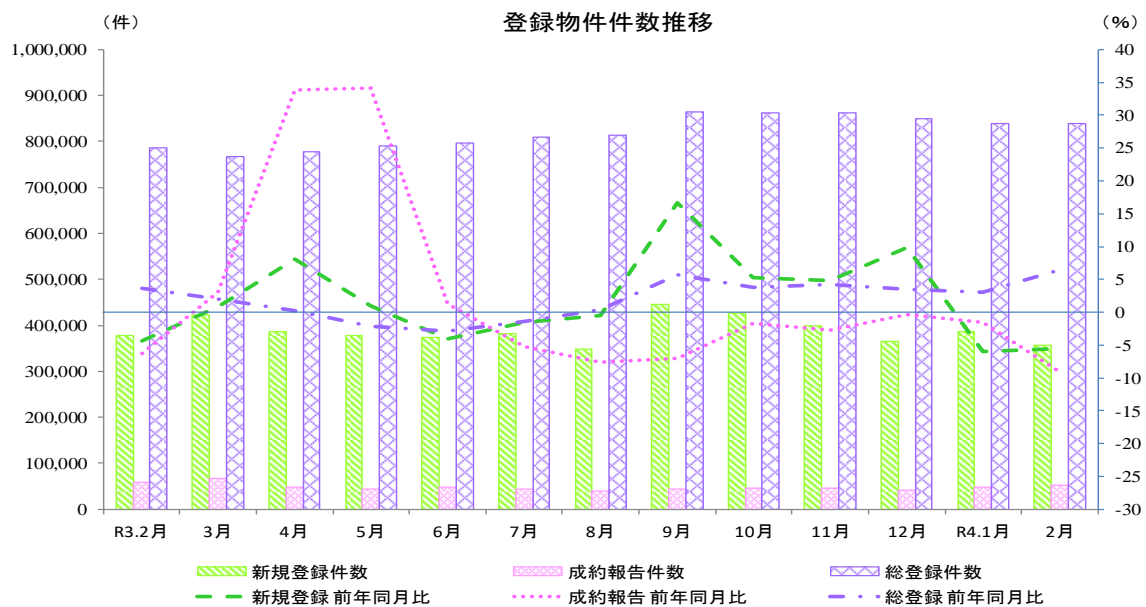


指定流通機構の活用状況について (令和4年2月分)

1. 概況

令和4年2月の指定流通機構の活用状況をみると、新規登録件数は357,213件と前年同月比で2ヶ月連続してマイナスとなり、前月比ではふたたびマイナスに転じた。成約報告件数は52,704件と前年同月比で8ヶ月連続してマイナスとなり、前月比では2ヶ月連続してプラスとなった。総登録件数は838,038件と前年同月比で7ヶ月連続してプラスとなり、前月比では3ヶ月連続してマイナスとなった。



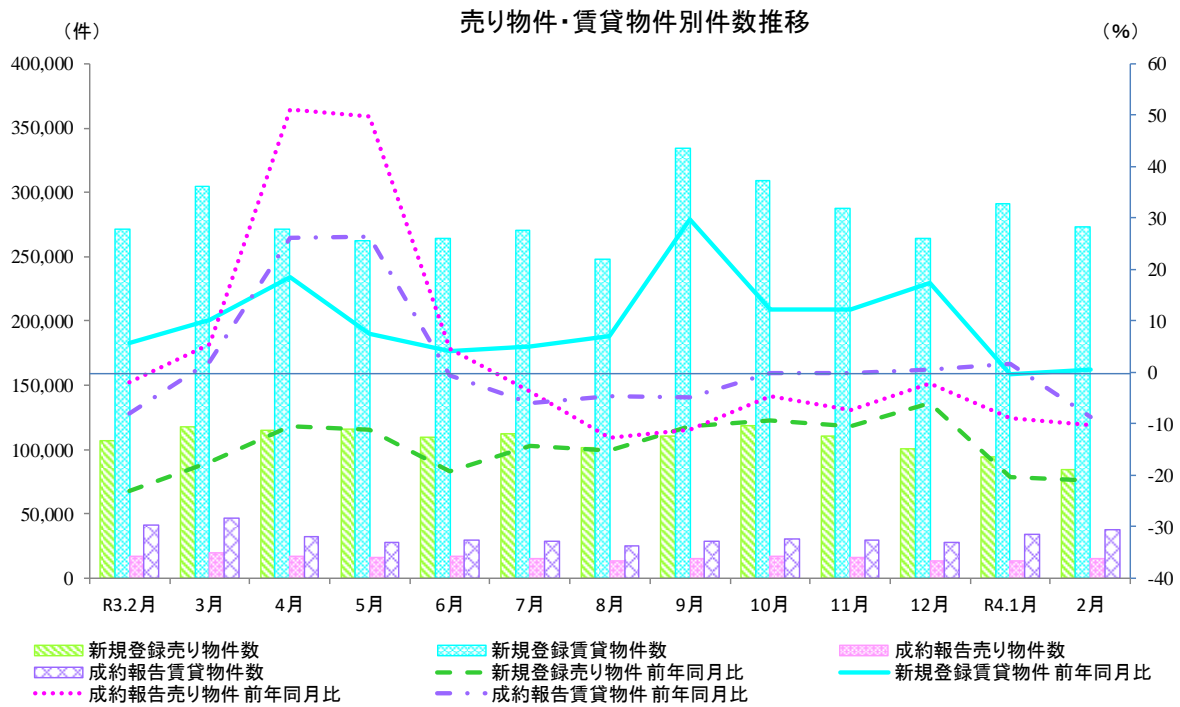
物件件数の推移

	R3.2月	3月	4月	5月	6月	7月	8月	9月	10月	11月	12月	R4.1月	2月
新規登録件数(件)	378,227	421,620	386,626	377,495	373,741	382,307	349,286	445,036	427,604	398,228	365,158	385,517	357,213
前年同月比(%)	▲4.3	0.8	8.1	1.0	▲4.0	▲1.5	▲0.5	16.7	5.3	4.8	9.9	▲6.0	▲5.6
前月比(%)	▲7.8	11.5	▲8.3	▲2.4	▲1.0	2.3	▲8.6	27.4	▲3.9	▲6.9	▲8.3	5.6	▲7.3
成約報告件数(件)	57,989	66,439	48,912	44,460	47,095	44,222	38,827	44,537	46,857	45,451	41,400	47,718	52,704
前年同月比(%)	▲6.3	3.1	33.8	34.2	1.2	▲5.2	▲7.7	▲7.1	▲1.7	▲2.7	▲0.4	▲1.5	▲9.1
前月比(%)	19.7	14.6	▲26.4	▲9.1	5.9	▲6.1	▲12.2	14.7	5.2	▲3.0	▲8.9	15.3	10.4
総登録件数(件)	786,791	767,838	777,968	790,248	796,440	808,898	814,480	863,991	861,322	862,294	849,180	838,799	838,038
前年同月比(%)	3.6	2.0	0.2	▲2.1	▲2.9	▲1.3	0.3	5.7	3.7	4.2	3.5	3.1	6.5
前月比(%)	▲3.3	▲2.4	1.3	1.6	0.8	1.6	0.7	6.1	▲0.3	0.1	▲1.5	▲1.2	▲0.1

2. 売り・賃貸別物件数

令和4年2月の売り物件数をみると、新規登録件数は84,288件と前年同月比で23ヶ月連続してマイナスとなり、前月比では4ヶ月連続してマイナスとなった。成約報告件数は14,916件と前年同月比で8ヶ月連続してマイナスとなり、前月比では4ヶ月ぶりにプラスに転じた。総登録件数は298,777件と前年同月比で20ヶ月連続してマイナスとなり、前月比では5ヶ月連続してプラスとなった。

令和4年2月の賃貸物件数をみると、新規登録件数は272,925件と前年同月比でふたたびプラスに転じ、前月比ではふたたびマイナスに転じた。成約報告件数は37,788件と前年同月比で3ヶ月ぶりにマイナスに転じ、前月比では2ヶ月連続してプラスとなった。総登録件数は539,261件と前年同月比で21ヶ月連続してプラスとなり、前月比では3ヶ月連続してマイナスとなった。



R4年2月 売り物件・賃貸物件別件数

新規登録件数	357,213 件	前年同月比 ▲ 5.6 %	👉 前月比 ▲ 7.3 %
売り物件	84,288 件	前年同月比 ▲ 21.0 %	👇 前月比 ▲ 10.4 %
賃貸物件	272,925 件	前年同月比 0.5 %	👉 前月比 ▲ 6.4 %
成約報告件数	52,704 件	前年同月比 ▲ 9.1 %	👉 前月比 10.4 %
売り物件	14,916 件	前年同月比 ▲ 10.3 %	👇 前月比 12.6 %
賃貸物件	37,788 件	前年同月比 ▲ 8.6 %	👉 前月比 9.6 %
総登録件数	838,038 件	前年同月比 6.5 %	👉 前月比 ▲ 0.1 %
売り物件	298,777 件	前年同月比 ▲ 5.3 %	👉 前月比 0.3 %
賃貸物件	539,261 件	前年同月比 14.4 %	👆 前月比 ▲ 0.28 %

凡例: 👆 10% ~ 👉 3% ~ 10% 👈 -3% ~ 3% 👇 -10% ~ -3% 📉 ~ -10%

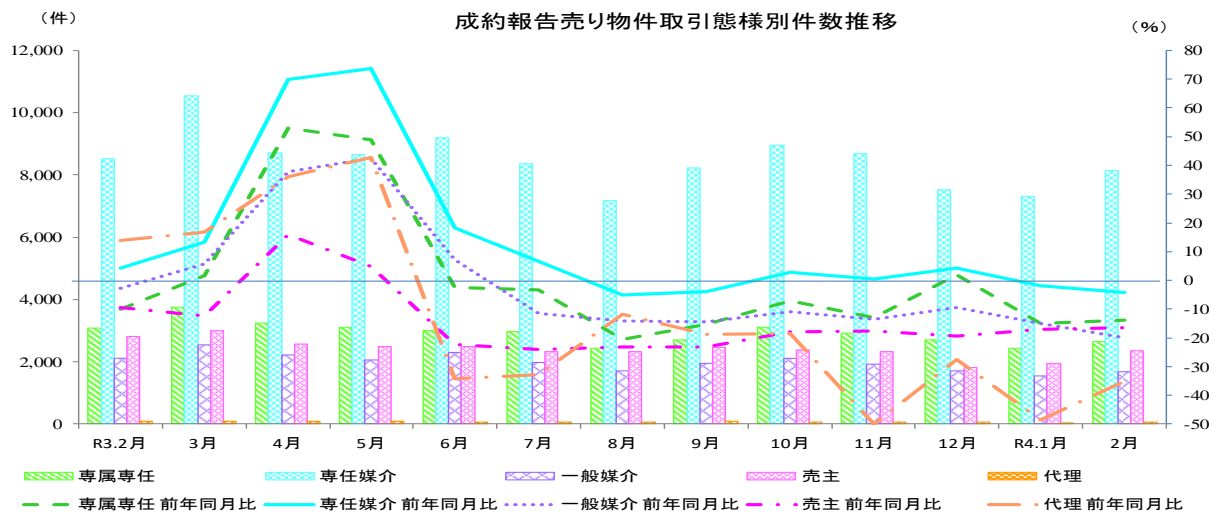
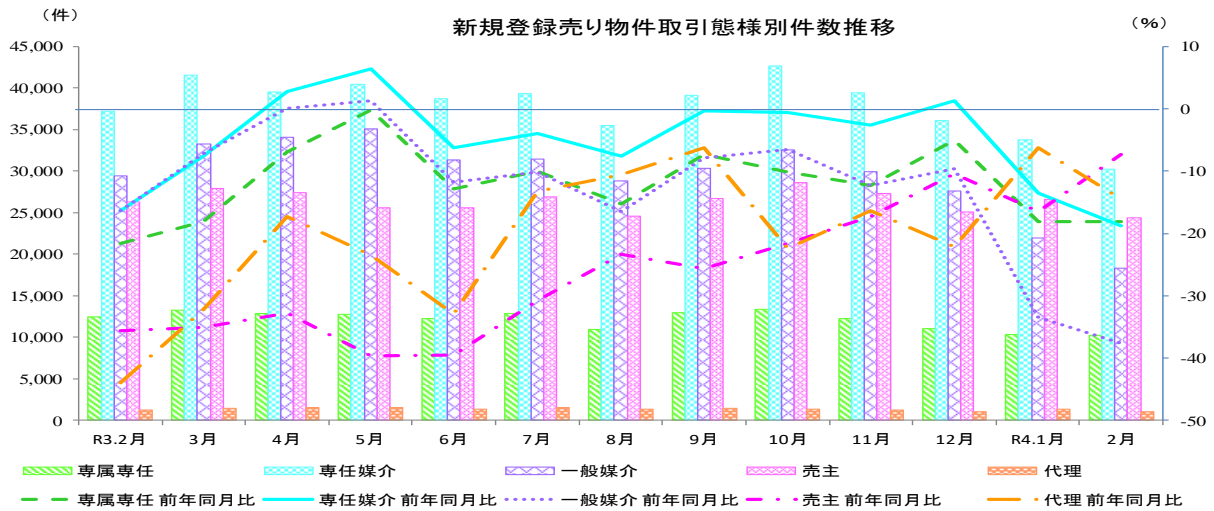
3. 売り物件の取引態様別物件数

令和4年2月の新規登録売り物件の取引態様別をみると、専任媒介は35.9%を占め、次いで売主は28.9%を占めている。成約報告売り物件の取引態様別をみると、専任媒介は54.7%を占め、次いで専属専任は17.8%を占めている。

R4年2月 売り物件の取引態様別件数

	取引態様	件数	構成比	前年同月比	前月比
新規登録件数	媒介契約	58,836 件	69.8 %	▲ 25.7 %	▲ 10.9 %
	専属専任	10,191 件	12.1 %	▲ 18.1 %	▲ 1.0 %
	専任媒介	30,279 件	35.9 %	▲ 18.7 %	▲ 10.2 %
	一般媒介	18,366 件	21.8 %	▲ 37.7 %	▲ 16.5 %
	売主	24,383 件	28.9 %	▲ 7.4 %	▲ 8.3 %
	代理	1,069 件	1.3 %	▲ 14.4 %	▲ 23.4 %
成約報告件数	媒介契約	12,504 件	83.8 %	▲ 8.8 %	▲ 11.0 %
	専属専任	2,660 件	17.8 %	▲ 13.8 %	▲ 9.3 %
	専任媒介	8,158 件	54.7 %	▲ 4.3 %	▲ 11.8 %
	一般媒介	1,686 件	11.3 %	▲ 19.9 %	▲ 9.9 %
	売主	2,353 件	15.8 %	▲ 16.6 %	▲ 21.5 %
	代理	59 件	0.4 %	▲ 35.2 %	▲ 55.3 %

凡例: ▲ 10% ~ ▲ 3% ~ 10% ➡ -3% ~ 3% ▼ -10% ~ -3% ▼ ~ -10%



指定流通機構実態調査集計、総括表 新規登録件数

		総 数	物 件 種 別				
			マンション	一 戸 建	土 地	住宅外全部	住宅外一部
全	総計件数	357,213	279,722	32,873	22,201	6,687	15,730
	[前月比]	[-7.3]	[-5.4]	[-14.8]	[-14.5]	[-11.4]	[-11.2]
売	総 計	84,288	32,020	25,760	21,558	4,463	487
	[前月比]	[-10.4]	[-4.1]	[-14.1]	[-14.3]	[-9.9]	[-15.0]
地	北海道	2,096	807	540	530	217	2
	[前月比]	[-1.3]	[13.7]	[-5.9]	[-18.1]	[16.7]	[-71.4]
域	東北	2,687	600	1,033	881	164	9
	[前月比]	[-7.5]	[4.7]	[-5.0]	[-17.0]	[-5.7]	[-18.2]
物	関東甲信越	4,294	397	1,449	2,152	290	6
	[前月比]	[-14.7]	[-8.7]	[-9.4]	[-19.0]	[-12.1]	[-53.8]
別	首都圏	37,596	19,676	9,697	5,849	2,048	326
	[前月比]	[1.5]	[2.7]	[-1.4]	[3.3]	[0.1]	[-6.1]
り	中部4県	3,133	413	1,113	1,443	154	10
	[前月比]	[-18.3]	[-4.8]	[-8.8]	[-26.2]	[-30.3]	[42.9]
域	中部圏	6,741	1,536	2,414	2,424	352	15
	[前月比]	[-6.2]	[-6.6]	[-3.0]	[-10.4]	[5.7]	[-25.0]
物	近畿圏	15,742	5,755	5,770	3,522	605	90
	[前月比]	[-9.0]	[-4.6]	[-9.6]	[-12.2]	[-20.1]	[-20.4]
別	中国	2,940	430	1,000	1,367	140	3
	[前月比]	[-18.6]	[-20.1]	[-23.4]	[-14.1]	[-15.7]	[-75.0]
件	四国	1,726	175	393	1,058	98	2
	[前月比]	[-60.4]	[-79.3]	[-77.7]	[-30.9]	[-53.3]	[-75.0]
態	九州	7,333	2,231	2,351	2,332	395	24
	[前月比]	[-30.9]	[-25.7]	[-36.9]	[-29.8]	[-25.6]	[-31.4]
様	専属専任	10,191	4,188	2,748	2,559	643	53
	[前月比]	[-1.0]	[7.3]	[-7.6]	[-8.2]	[11.6]	[3.9]
別	専任媒介	30,279	11,256	8,615	8,711	1,552	145
	[前月比]	[-10.2]	[-7.8]	[-13.3]	[-10.4]	[-7.3]	[-24.1]
件	一般媒介	18,366	6,028	4,814	5,837	1,560	127
	[前月比]	[-16.5]	[-8.2]	[-22.4]	[-20.2]	[-12.6]	[-8.6]
別	売主	24,383	10,040	9,364	4,224	606	149
	[前月比]	[-8.3]	[-0.8]	[-11.5]	[-15.7]	[-16.0]	[-7.5]
別	代理	1,069	508	219	227	102	13
	[前月比]	[-23.4]	[-11.2]	[-24.7]	[-25.3]	[-48.5]	[-58.1]
賃	総 計	272,925	247,702	7,113	643	2,224	15,243
	[前月比]	[-6.4]	[-5.6]	[-17.1]	[-20.5]	[-14.4]	[-11.0]
地	北海道	2,057	1,960	26	6	13	52
	[前月比]	[9.0]	[9.0]	[-31.6]	[-14.3]	[333.3]	[26.8]
賃	東北	6,099	5,771	130	19	26	153
	[前月比]	[5.6]	[6.6]	[-4.4]	[18.8]	[-3.7]	[-15.0]
物	関東甲信越	12,184	11,547	237	34	67	299
	[前月比]	[12.7]	[14.7]	[-14.1]	[-50.7]	[-11.8]	[-8.0]
域	首都圏	194,183	178,754	3,520	261	1,033	10,615
	[前月比]	[-4.7]	[-4.6]	[-2.8]	[19.2]	[-10.1]	[-7.1]
物	中部4県	2,151	1,613	192	26	107	213
	[前月比]	[-21.9]	[-22.2]	[-8.1]	[-53.6]	[-20.1]	[-24.5]
別	中部圏	2,993	2,468	121	61	93	250
	[前月比]	[-16.5]	[-9.0]	[-15.4]	[-34.4]	[-34.0]	[-49.7]
件	近畿圏	42,152	36,345	2,095	151	643	2,918
	[前月比]	[-6.4]	[-6.3]	[-11.3]	[-8.5]	[-1.4]	[-4.7]
別	中国	1,284	871	224	18	57	114
	[前月比]	[-34.2]	[-39.7]	[-17.3]	[-47.1]	[-8.1]	[-18.6]
件	四国	764	565	79	22	33	65
	[前月比]	[-67.3]	[-61.3]	[-83.5]	[-8.3]	[-74.2]	[-73.6]
別	九州	9,058	7,808	489	45	152	564
	[前月比]	[-33.3]	[-30.6]	[-53.5]	[-64.3]	[-32.4]	[-39.2]

* 前月比欄の数値は、対前月増減率である。

* 「関東甲信越」は、茨城県・栃木県・群馬県・新潟県・山梨県・長野県、「首都圏」は、東京都・千葉県・埼玉県・神奈川県、「中部圏」は、愛知県・岐阜県・三重県、「中部4県」は、富山県・石川県・福井県・静岡県、「近畿圏」は、大阪府・京都府・兵庫県・滋賀県・奈良県・和歌山県をいう。

指定流通機構実態調査 売り物件・新規登録件数 時系列表

	3年2月	3年3月	3年4月	3年5月	3年6月	3年7月	3年8月	3年9月	3年10月	3年11月	3年12月	4年1月	4年2月	一年間計
	件数 (前月比) [前年比]	件数 (前月比) [前年比]	件数 (前月比) [前年比]	件数 (前月比) [前年比]	件数 (前月比) [前年比]	件数 (前月比) [前年比]	件数 (前月比) [前年比]	件数 (前月比) [前年比]	件数 (前月比) [前年比]	件数 (前月比) [前年比]	件数 (前月比) [前年比]	件数 (前月比) [前年比]	件数 (前月比) [前年比]	件数 (前月比) [前年比]
総数	106,737 (-9.5) [-23.0]	117,421 (10.0) [-17.3]	115,409 (-1.7) [-10.5]	115,529 (0.1) [-11.1]	109,376 (-5.3) [-19.2]	112,052 (2.4) [-14.4]	101,222 (-9.7) [-15.2]	110,820 (9.3) [-10.6]	118,643 (7.3) [-9.4]	110,297 (-7.0) [-10.5]	100,913 (-8.5) [-5.9]	94,030 (-6.8) [-20.3]	84,288 (-10.4) [-21.0]	1,289,800
北海道	1,970 (-11.1) [-27.4]	2,267 (15.1) [-13.5]	2,431 (7.2) [-15.4]	2,360 (-2.9) [-4.6]	2,358 (-0.1) [-10.5]	2,693 (14.2) [-11.9]	2,229 (-17.2) [-1.3]	2,625 (17.8) [0.4]	2,809 (7.0) [1.5]	2,513 (-10.5) [1.3]	2,271 (-9.6) [14.5]	2,124 (-6.5) [14.5]	2,096 (-1.3) [6.4]	28,776 (2.2)
東北	2,748 (-28.3) [-24.1]	3,170 (15.4) [-19.1]	3,182 (0.4) [-17.5]	2,859 (-10.2) [-18.6]	3,046 (6.5) [-13.4]	2,999 (-1.5) [-15.7]	2,734 (-8.8) [-12.2]	3,154 (15.4) [-9.1]	3,394 (7.6) [-11.2]	3,037 (-10.5) [-13.0]	2,804 (-7.7) [-16.4]	2,906 (3.6) [-24.2]	2,687 (-7.5) [-2.2]	35,972 (2.8)
関東甲信越	4,238 (-19.9) [-16.0]	4,682 (10.5) [-8.1]	4,646 (-0.8) [-14.3]	4,803 (3.4) [-8.4]	4,686 (-2.4) [-2.1]	4,888 (4.3) [0.6]	4,169 (-14.7) [-5.3]	4,279 (2.6) [-28.2]	5,068 (18.4) [-9.8]	4,529 (-10.6) [-10.7]	4,052 (-10.5) [0.8]	5,034 (24.2) [-4.8]	4,294 (-14.7) [1.3]	55,130 (4.3)
圏	35,894 (-6.3) [-35.0]	38,057 (6.0) [-30.9]	37,980 (-0.2) [-17.8]	34,656 (-8.8) [-25.0]	34,714 (0.2) [-33.6]	37,069 (6.8) [-23.9]	32,003 (-13.7) [-17.8]	36,294 (13.4) [-17.5]	39,851 (9.8) [-14.9]	37,450 (-6.0) [-11.9]	33,328 (-11.0) [-1.5]	37,049 (11.2) [-3.3]	37,596 (1.5) [4.7]	436,047 (33.8)
別	3,750 (-22.2) [2.3]	4,448 (18.6) [5.1]	5,816 (30.8) [49.7]	7,204 (23.9) [90.7]	4,834 (-32.9) [25.7]	3,804 (-21.3) [1.4]	3,738 (-1.7) [11.7]	4,044 (8.2) [-1.1]	4,013 (-0.8) [-7.7]	3,738 (-6.9) [-8.1]	3,145 (-15.9) [-11.8]	3,836 (22.0) [-20.4]	3,133 (-18.3) [-16.5]	51,753 (4.0)
内	6,354 (-15.5) [-20.2]	7,168 (12.8) [-15.1]	7,244 (1.1) [-1.1]	7,089 (-2.1) [-13.3]	6,737 (-5.0) [-13.4]	6,599 (-2.0) [-9.8]	6,085 (-7.8) [-12.7]	6,836 (12.3) [-11.2]	7,029 (2.8) [-9.7]	6,686 (-4.9) [-9.3]	5,943 (-11.1) [-7.7]	7,190 (21.0) [-4.4]	6,741 (-6.2) [6.1]	81,347 (6.3)
近畿圏	18,764 (-3.4) [-19.6]	20,240 (7.9) [-18.9]	18,795 (-7.1) [-11.0]	18,262 (-2.8) [-15.4]	18,108 (-0.8) [-19.8]	18,620 (2.8) [-10.2]	16,485 (-11.5) [-15.2]	18,691 (13.4) [-10.4]	19,961 (6.8) [-8.5]	17,554 (-12.1) [-10.5]	16,311 (-7.1) [-9.5]	17,301 (6.1) [-11.0]	15,742 (-9.0) [-16.1]	216,070 (16.8)
中国	6,420 (-10.2) [-10.9]	8,083 (25.9) [12.5]	6,755 (-16.4) [-9.0]	7,309 (8.2) [0.2]	6,852 (-6.3) [-2.1]	6,967 (1.7) [-8.4]	6,356 (-8.8) [-13.1]	6,594 (3.7) [-0.2]	7,863 (19.2) [2.0]	7,003 (-10.9) [4.4]	6,855 (-2.1) [1.8]	3,613 (-47.3) [-49.4]	2,940 (-18.6) [-54.2]	77,190 (6.0)
四国	4,013 (12.2) [4.5]	3,916 (-2.4) [5.8]	4,107 (4.9) [-13.6]	5,189 (26.3) [35.8]	3,948 (-23.9) [1.0]	3,874 (-1.9) [4.8]	4,185 (8.0) [-18.1]	3,780 (-9.7) [-1.1]	3,892 (3.0) [-3.6]	4,380 (12.5) [0.2]	3,485 (-20.4) [-5.0]	4,361 (25.1) [21.9]	1,726 (-60.4) [-57.0]	46,843 (3.6)
九州	22,586 (-12.5) [-13.5]	25,390 (12.4) [-5.5]	24,453 (-3.7) [-6.3]	25,798 (5.5) [-7.4]	24,093 (-6.6) [-11.0]	24,539 (1.9) [-11.0]	23,238 (-5.3) [-18.6]	24,323 (4.7) [-1.1]	24,763 (1.8) [-5.6]	23,407 (-5.5) [-15.3]	22,719 (-2.9) [-11.2]	10,616 (-53.3) [-58.9]	7,333 (-30.9) [-67.5]	260,672 (20.2)
取	12,450 (-1.0) [-21.6]	13,314 (6.9) [-18.1]	12,834 (-3.6) [-7.0]	12,799 (-0.3) [-0.2]	12,298 (-3.9) [-12.9]	12,834 (4.4) [-10.0]	10,920 (-14.9) [-15.3]	12,949 (18.6) [-7.3]	13,414 (3.6) [-10.1]	12,259 (-8.6) [-12.3]	11,028 (-10.0) [-5.0]	10,292 (-6.7) [-18.1]	10,191 (-1.0) [-18.1]	145,132 (11.3)
引	37,251 (-4.5) [-16.3]	41,515 (11.4) [-7.6]	39,570 (-4.7) [2.8]	40,433 (2.2) [6.5]	38,777 (-4.1) [-6.2]	39,326 (1.4) [-3.9]	35,511 (-9.7) [-7.6]	39,166 (10.3) [-0.3]	42,661 (8.9) [-0.6]	39,442 (-7.5) [-2.7]	36,129 (-8.4) [1.3]	33,737 (-6.6) [-13.5]	30,279 (-10.2) [-18.7]	456,546 (35.4)
態	29,463 (-10.9) [-16.4]	33,272 (12.9) [-7.1]	34,033 (2.3) [0.1]	35,128 (3.2) [1.4]	31,349 (-10.8) [-11.8]	31,423 (0.2) [-10.1]	28,797 (-8.4) [-16.5]	30,367 (5.5) [-7.9]	32,602 (7.4) [-6.6]	29,950 (-8.1) [-12.3]	27,603 (-7.8) [-9.6]	22,006 (-20.3) [-33.4]	18,366 (-16.5) [-37.7]	354,896 (27.5)
別	26,324 (-17.3) [-35.6]	27,870 (5.9) [-35.0]	27,379 (-1.8) [-32.8]	25,630 (-6.4) [-39.7]	25,586 (-0.2) [-39.6]	26,928 (5.2) [-30.8]	24,635 (-8.5) [-23.3]	26,695 (8.4) [-25.7]	28,628 (7.2) [-21.6]	27,355 (-4.4) [-17.3]	25,070 (-8.4) [-10.4]	26,599 (6.1) [-16.4]	24,383 (-8.3) [-7.4]	316,758 (24.6)
代理	1,249 (-16.1) [-44.0]	1,450 (16.1) [-32.2]	1,593 (9.9) [-17.3]	1,539 (-3.4) [-23.5]	1,366 (-11.2) [-32.9]	1,541 (12.8) [-13.2]	1,359 (-11.8) [-10.6]	1,443 (6.2) [-6.2]	1,338 (-7.3) [-22.3]	1,291 (-3.5) [-16.4]	1,083 (-16.1) [-22.1]	1,396 (28.9) [-6.2]	1,069 (-23.4) [-14.4]	16,468 (1.3)
物	33,421 (-6.8) [-22.6]	35,899 (7.4) [-19.0]	34,604 (-3.6) [-6.5]	33,234 (-4.0) [-10.8]	32,724 (-1.5) [-20.9]	34,919 (6.7) [-12.4]	30,990 (-11.3) [-11.8]	34,581 (11.6) [-11.1]	37,711 (9.1) [-6.6]	35,200 (-6.7) [-6.0]	32,223 (-8.5) [-4.1]	33,376 (3.6) [-6.9]	32,020 (-4.1) [-4.2]	407,481 (31.6)
件	34,025 (-11.0) [-24.6]	37,836 (11.2) [-19.4]	37,862 (0.1) [-13.5]	37,831 (-0.1) [-15.9]	35,980 (-4.9) [-20.8]	35,929 (-0.1) [-16.0]	31,988 (-11.0) [-17.1]	35,686 (11.6) [-9.0]	38,691 (8.4) [-7.5]	35,261 (-8.9) [-9.5]	32,328 (-8.3) [-4.5]	29,985 (-7.2) [-21.6]	25,760 (-14.1) [-24.3]	415,137 (32.2)
種	33,570 (-11.1) [-22.6]	37,160 (10.7) [-14.8]	36,608 (-1.5) [-12.4]	38,222 (4.4) [-7.1]	34,321 (-10.2) [-18.3]	34,863 (1.6) [-16.1]	32,424 (-7.0) [-18.3]	34,272 (5.7) [-12.8]	35,524 (3.7) [-15.6]	33,796 (-4.9) [-16.6]	30,942 (-8.4) [-9.4]	25,142 (-18.7) [-33.4]	21,558 (-14.3) [-35.8]	394,832 (30.6)
別	5,202 (-6.3) [-19.4]	5,939 (14.2) [-8.7]	5,768 (-2.9) [-1.4]	5,707 (-1.1) [-4.9]	5,797 (1.6) [-4.1]	5,819 (0.4) [-5.5]	5,424 (-6.8) [-1.1]	5,559 (2.5) [-3.4]	6,149 (10.6) [0.8]	5,447 (-11.4) [-7.1]	4,934 (-9.4) [-4.7]	4,954 (0.4) [-10.7]	4,463 (-9.9) [-14.2]	65,960 (5.1)
住宅外(一部)	519 (-11.9) [-6.0]	587 (13.1) [-14.1]	567 (-3.4) [12.1]	535 (-5.6) [-11.4]	554 (3.6) [3.2]	522 (-5.8) [1.4]	396 (-24.1) [-21.4]	522 (31.8) [2.8]	568 (8.8) [-1.2]	593 (4.4) [13.0]	486 (-18.0) [8.2]	573 (17.9) [-2.7]	487 (-15.0) [-6.2]	6,390 (0.5)

※ 構成比は、四捨五入による端数処理のため内数の合計が100%にならないことがある

指定流通機構実態調査集計、総括表 地域別取引態様別売物件月間新規登録件数

地域	取引態様	総数	物件種別				
			マンション	一戸建	土地	住宅外全部	住宅外一部
北海道	専属専任 [構成比]	192 [9.2]	72 [8.9]	40 [7.4]	53 [10.0]	27 [12.4]	0 [0.0]
	専任媒介 [構成比]	1,029 [49.1]	332 [41.1]	320 [59.3]	277 [52.3]	99 [45.6]	1 [50.0]
	一般媒介 [構成比]	412 [19.7]	124 [15.4]	100 [18.5]	122 [23.0]	66 [30.4]	0 [0.0]
	売主 [構成比]	443 [21.1]	271 [33.6]	79 [14.6]	70 [13.2]	22 [10.1]	1 [50.0]
	代理 [構成比]	20 [1.0]	8 [1.0]	1 [0.2]	8 [1.5]	3 [1.4]	0 [0.0]
	合計 [地域比]	2,096 [2.5]	807 [2.5]	540 [2.1]	530 [2.5]	217 [4.9]	2 [0.4]
東北	専属専任 [構成比]	179 [6.7]	41 [6.8]	51 [4.9]	69 [7.8]	18 [11.0]	0 [0.0]
	専任媒介 [構成比]	1,047 [39.0]	259 [43.2]	378 [36.6]	355 [40.3]	51 [31.1]	4 [44.4]
	一般媒介 [構成比]	764 [28.4]	100 [16.7]	263 [25.5]	315 [35.8]	82 [50.0]	4 [44.4]
	売主 [構成比]	686 [25.5]	200 [33.3]	337 [32.6]	136 [15.4]	12 [7.3]	1 [11.1]
	代理 [構成比]	11 [0.4]	0 [0.0]	4 [0.4]	6 [0.7]	1 [0.6]	0 [0.0]
	合計 [地域比]	2,687 [3.2]	600 [1.9]	1,033 [4.0]	881 [4.1]	164 [3.7]	9 [1.8]
関東甲信越	専属専任 [構成比]	272 [6.3]	30 [7.6]	61 [4.2]	125 [5.8]	55 [19.0]	1 [16.7]
	専任媒介 [構成比]	1,546 [36.0]	158 [39.8]	506 [34.9]	768 [35.7]	111 [38.3]	3 [50.0]
	一般媒介 [構成比]	1,217 [28.3]	126 [31.7]	293 [20.2]	711 [33.0]	85 [29.3]	2 [33.3]
	売主 [構成比]	1,205 [28.1]	82 [20.7]	578 [39.9]	512 [23.8]	33 [11.4]	0 [0.0]
	代理 [構成比]	54 [1.3]	1 [0.3]	11 [0.8]	36 [1.7]	6 [2.1]	0 [0.0]
	合計 [地域比]	4,294 [5.1]	397 [1.2]	1,449 [5.6]	2,152 [10.0]	290 [6.5]	6 [1.2]
首都圏	専属専任 [構成比]	4,400 [11.7]	2,590 [13.2]	801 [8.3]	716 [12.2]	254 [12.4]	39 [12.0]
	専任媒介 [構成比]	12,426 [33.1]	5,993 [30.5]	3,361 [34.7]	2,332 [39.9]	654 [31.9]	86 [26.4]
	一般媒介 [構成比]	5,427 [14.4]	2,806 [14.3]	968 [10.0]	898 [15.4]	686 [33.5]	69 [21.2]
	売主 [構成比]	14,608 [38.9]	7,843 [39.9]	4,442 [45.8]	1,815 [31.0]	387 [18.9]	121 [37.1]
	代理 [構成比]	735 [2.0]	444 [2.3]	125 [1.3]	88 [1.5]	67 [3.3]	11 [3.4]
	合計 [地域比]	37,596 [44.6]	19,676 [61.4]	9,697 [37.6]	5,849 [27.1]	2,048 [45.9]	326 [66.9]
中部四県	専属専任 [構成比]	293 [9.4]	17 [4.1]	88 [7.9]	168 [11.6]	19 [12.3]	1 [10.0]
	専任媒介 [構成比]	1,191 [38.0]	203 [49.2]	339 [30.5]	588 [40.7]	56 [36.4]	5 [50.0]
	一般媒介 [構成比]	1,018 [32.5]	141 [34.1]	339 [30.5]	471 [32.6]	63 [40.9]	4 [40.0]
	売主 [構成比]	612 [19.5]	51 [12.3]	340 [30.5]	206 [14.3]	15 [9.7]	0 [0.0]
	代理 [構成比]	19 [0.6]	1 [0.2]	7 [0.6]	10 [0.7]	1 [0.6]	0 [0.0]
	合計 [地域比]	3,133 [3.7]	413 [1.3]	1,113 [4.3]	1,443 [6.7]	154 [3.5]	10 [2.1]
中部圏	専属専任 [構成比]	552 [8.2]	162 [10.5]	150 [6.2]	186 [7.7]	52 [14.8]	2 [13.3]
	専任媒介 [構成比]	2,346 [34.8]	645 [42.0]	561 [23.2]	1,011 [41.7]	124 [35.2]	5 [33.3]
	一般媒介 [構成比]	1,881 [27.9]	413 [26.9]	439 [18.2]	865 [35.7]	158 [44.9]	6 [40.0]
	売主 [構成比]	1,941 [28.8]	314 [20.4]	1,260 [52.2]	348 [14.4]	18 [5.1]	1 [6.7]
	代理 [構成比]	21 [0.3]	2 [0.1]	4 [0.2]	14 [0.6]	0 [0.0]	1 [6.7]
	合計 [地域比]	6,741 [8.0]	1,536 [4.8]	2,414 [9.4]	2,424 [11.2]	352 [7.9]	15 [3.1]
近畿圏	専属専任 [構成比]	3,181 [20.2]	1,025 [17.8]	1,307 [22.7]	709 [20.1]	133 [22.0]	7 [7.8]
	専任媒介 [構成比]	5,505 [35.0]	2,290 [39.8]	1,717 [29.8]	1,266 [35.9]	203 [33.6]	29 [32.2]
	一般媒介 [構成比]	3,793 [24.1]	1,517 [26.4]	1,232 [21.4]	834 [23.7]	177 [29.3]	33 [36.7]
	売主 [構成比]	3,106 [19.7]	878 [15.3]	1,460 [25.3]	675 [19.2]	72 [11.9]	21 [23.3]
	代理 [構成比]	157 [1.0]	45 [0.8]	54 [0.9]	38 [1.1]	20 [3.3]	0 [0.0]
	合計 [地域比]	15,742 [18.7]	5,755 [18.0]	5,770 [22.4]	3,522 [16.3]	605 [13.6]	90 [18.5]
中国	専属専任 [構成比]	255 [8.7]	26 [6.0]	90 [9.0]	120 [8.8]	19 [13.6]	0 [0.0]
	専任媒介 [構成比]	1,592 [54.1]	282 [65.6]	528 [52.8]	708 [51.8]	72 [51.4]	2 [66.7]
	一般媒介 [構成比]	763 [26.0]	88 [20.5]	223 [22.3]	409 [29.9]	43 [30.7]	0 [0.0]
	売主 [構成比]	316 [10.7]	33 [7.7]	156 [15.6]	122 [8.9]	5 [3.6]	0 [0.0]
	代理 [構成比]	14 [0.5]	1 [0.2]	3 [0.3]	8 [0.6]	1 [0.7]	1 [33.3]
	合計 [地域比]	2,940 [3.5]	430 [1.3]	1,000 [3.9]	1,367 [6.3]	140 [3.1]	3 [0.6]
四国	専属専任 [構成比]	224 [13.0]	11 [6.3]	30 [7.6]	164 [15.5]	19 [19.4]	0 [0.0]
	専任媒介 [構成比]	637 [36.9]	101 [57.7]	122 [31.0]	377 [35.6]	37 [37.8]	0 [0.0]
	一般媒介 [構成比]	666 [38.6]	55 [31.4]	130 [33.1]	444 [42.0]	35 [35.7]	2 [100.0]
	売主 [構成比]	186 [10.8]	7 [4.0]	106 [27.0]	68 [6.4]	5 [5.1]	0 [0.0]
	代理 [構成比]	13 [0.8]	1 [0.6]	5 [1.3]	5 [0.5]	2 [2.0]	0 [0.0]
	合計 [地域比]	1,726 [2.0]	175 [0.5]	393 [1.5]	1,058 [4.9]	98 [2.2]	2 [0.4]
九州	専属専任 [構成比]	643 [8.8]	214 [9.6]	130 [5.5]	249 [10.7]	47 [11.9]	3 [12.5]
	専任媒介 [構成比]	2,960 [40.4]	993 [44.5]	783 [33.3]	1,029 [44.1]	145 [36.7]	10 [41.7]
	一般媒介 [構成比]	2,425 [33.1]	658 [29.5]	827 [35.2]	768 [32.9]	165 [41.8]	7 [29.2]
	売主 [構成比]	1,280 [17.5]	361 [16.2]	606 [25.8]	272 [11.7]	37 [9.4]	4 [16.7]
	代理 [構成比]	25 [0.3]	5 [0.2]	5 [0.2]	14 [0.6]	1 [0.3]	0 [0.0]
	合計 [地域比]	7,333 [8.7]	2,231 [7.0]	2,351 [9.1]	2,332 [10.8]	395 [8.9]	24 [4.9]
全国	専属専任 [構成比]	10,191 [12.1]	4,188 [13.1]	2,748 [10.7]	2,559 [11.9]	643 [14.4]	53 [10.9]
	専任媒介 [構成比]	30,279 [35.9]	11,256 [35.2]	8,615 [33.4]	8,711 [40.4]	1,552 [34.8]	145 [29.8]
	一般媒介 [構成比]	18,366 [21.8]	6,028 [18.8]	4,814 [18.7]	5,837 [27.1]	1,560 [35.0]	127 [26.1]
	売主 [構成比]	24,383 [28.9]	10,040 [31.4]	9,364 [36.4]	4,224 [19.6]	606 [13.6]	149 [30.6]
	代理 [構成比]	1,069 [1.3]	508 [1.6]	219 [0.9]	227 [1.1]	102 [2.3]	13 [2.7]
	合計	84,288	32,020	25,760	21,558	4,463	487

※構成比とは地域内の取引態様別構成比で、地域比とは全国合計の地域別シェアである。

※構成比・地域比は、四捨五入による端数処理のため内数の合計が100%にならないことがある。

指定流通機構実態調査集計、総括表 月間成約件数

		総 数	物 件 種 別				
			マンション	一 戸 建	土 地	住宅外全部	住宅外一部
全	総計件数	52,704	40,313	6,415	3,075	699	2,202
	[前月比]	[10.4]	[10.6]	[13.8]	[5.9]	[11.5]	[4.7]
売	総 計	14,916	6,286	5,207	3,030	356	37
	[前月比]	[12.6]	[13.7]	[14.8]	[6.9]	[17.5]	[2.8]
地	北海道	629	229	212	148	39	1
	[前月比]	[13.5]	[28.7]	[8.7]	[0.7]	[18.2]	[0.0]
域	東北	601	150	263	170	18	0
	[前月比]	[8.5]	[20.0]	[19.0]	[-11.5]	[20.0]	[-100.0]
り	関東甲信越	622	81	281	239	20	1
	[前月比]	[13.5]	[6.6]	[4.5]	[31.3]	[25.0]	[-80.0]
物	首都圏	5,782	3,154	1,631	855	124	18
	[前月比]	[17.7]	[13.8]	[25.3]	[17.9]	[15.9]	[125.0]
別	中部4県	432	98	185	136	12	1
	[前月比]	[8.5]	[36.1]	[-0.5]	[3.8]	[71.4]	[-50.0]
件	中部圏	1,306	457	416	398	35	0
	[前月比]	[8.6]	[26.6]	[1.0]	[-1.7]	[52.2]	[-100.0]
取	近畿圏	3,616	1,533	1,427	592	55	9
	[前月比]	[9.9]	[10.0]	[10.1]	[8.6]	[27.9]	[-18.2]
引	中国	536	148	220	148	18	2
	[前月比]	[3.9]	[-3.3]	[28.7]	[-16.4]	[28.6]	[100.0]
態	四国	178	36	78	57	6	1
	[前月比]	[17.9]	[-2.7]	[9.9]	[58.3]	[0.0]	[0.0]
様	九州	1,214	400	494	287	29	4
	[前月比]	[8.8]	[9.9]	[19.3]	[-2.7]	[-25.6]	[0.0]
別	専属専任	2,660	1,361	746	488	60	5
	[前月比]	[9.3]	[13.9]	[-0.8]	[9.9]	[46.3]	[150.0]
別	専任媒介	8,158	3,781	2,477	1,678	206	16
	[前月比]	[11.8]	[11.8]	[16.0]	[5.6]	[22.6]	[-33.3]
売	一般媒介	1,686	601	565	449	62	9
	[前月比]	[9.9]	[10.7]	[12.8]	[7.9]	[-12.7]	[200.0]
主	売主	2,353	520	1,398	402	26	7
	[前月比]	[21.5]	[32.7]	[22.8]	[6.1]	[23.8]	[0.0]
代	代理	59	23	21	13	2	0
	[前月比]	[55.3]	[27.8]	[90.9]	[85.7]	[0.0]	[-]
賃	総 計	37,788	34,027	1,208	45	343	2,165
	[前月比]	[9.6]	[10.1]	[10.0]	[-33.8]	[5.9]	[4.7]
地	北海道	81	67	4	0	1	9
	[前月比]	[2.5]	[-1.5]	[300.0]	[-100.0]	[-83.3]	[200.0]
賃	東北	492	427	32	0	7	26
	[前月比]	[17.1]	[19.9]	[14.3]	[-100.0]	[133.3]	[-16.1]
域	関東甲信越	537	419	55	3	15	45
	[前月比]	[14.0]	[14.8]	[7.8]	[0.0]	[36.4]	[9.8]
物	首都圏	20,518	18,663	494	21	110	1,230
	[前月比]	[7.8]	[7.9]	[12.5]	[-8.7]	[0.9]	[5.1]
別	中部4県	363	274	33	2	5	49
	[前月比]	[7.7]	[9.6]	[32.0]	[-]	[-58.3]	[-2.0]
件	中部圏	221	172	10	3	5	31
	[前月比]	[6.3]	[2.4]	[11.1]	[50.0]	[-28.6]	[40.9]
賃	近畿圏	12,686	11,487	416	10	162	611
	[前月比]	[12.6]	[13.7]	[-2.8]	[-64.3]	[27.6]	[5.9]
物	中国	196	153	21	0	8	14
	[前月比]	[20.2]	[54.5]	[5.0]	[-]	[-42.9]	[-53.3]
別	四国	93	67	14	0	4	8
	[前月比]	[111.4]	[109.4]	[180.0]	[-]	[100.0]	[60.0]
件	九州	2,601	2,298	129	6	26	142
	[前月比]	[6.2]	[5.6]	[40.2]	[-33.3]	[-21.2]	[2.2]

* 成約件数は成約報告のあった件数である。

指定流通機構実態調査集計、総括表 当月末総登録件数

		総 数	物 件 種 別					
			マンション	一 戸 建	土 地	住宅外全部	住宅外一部	
全	総計件数 [前月比]	838,038 [-0.1]	512,531 [0.0]	102,309 [0.2]	123,136 [-0.1]	26,846 [0.1]	73,216 [-1.3]	
売 り 物 別	総 計 [前月比]	298,777 [0.3]	73,017 [1.4]	87,671 [-0.4]	119,231 [-0.1]	17,309 [1.5]	1,549 [4.7]	
	北海道 [前月比]	10,088 [-0.2]	1,970 [1.3]	2,639 [-0.7]	4,577 [-1.0]	881 [2.9]	21 [-12.5]	
	東北 [前月比]	14,321 [-0.3]	1,525 [1.9]	4,689 [0.5]	7,253 [-1.8]	810 [3.4]	44 [15.8]	
	関東甲信越 [前月比]	28,263 [0.2]	1,624 [-1.9]	7,594 [-1.3]	17,528 [1.0]	1,458 [2.2]	59 [-3.3]	
	首都圏 [前月比]	89,452 [1.1]	37,471 [1.7]	23,955 [0.0]	20,894 [0.6]	6,299 [1.9]	833 [8.2]	
	中部4県 [前月比]	18,679 [-0.8]	1,357 [-2.2]	5,422 [-1.4]	10,895 [-0.3]	968 [-0.6]	37 [8.8]	
	中部圏 [前月比]	28,449 [0.0]	4,860 [0.5]	8,133 [0.1]	14,090 [-0.3]	1,300 [0.9]	66 [8.2]	
	近畿圏 [前月比]	55,900 [0.4]	15,678 [1.7]	19,763 [0.1]	17,458 [-0.8]	2,652 [1.8]	349 [-0.3]	
	中国 [前月比]	14,666 [0.1]	1,189 [4.5]	4,566 [-1.0]	8,214 [0.1]	676 [0.4]	21 [-8.7]	
	四国 [前月比]	7,258 [2.4]	587 [4.4]	1,858 [-1.2]	4,420 [3.8]	383 [2.7]	10 [-9.1]	
	九州 [前月比]	31,701 [-1.4]	6,756 [0.2]	9,052 [-2.1]	13,902 [-1.7]	1,882 [-0.5]	109 [0.9]	
	取 引 態 様 別	専属専任 [前月比]	34,935 [1.1]	10,493 [2.7]	9,919 [0.5]	12,302 [-0.1]	2,066 [2.7]	155 [14.0]
		専任媒介 [前月比]	114,033 [-0.1]	30,529 [1.0]	30,925 [-0.6]	46,215 [-0.6]	5,825 [1.7]	539 [1.9]
		一般媒介 [前月比]	91,352 [0.2]	18,996 [1.8]	21,047 [-1.1]	43,319 [-0.2]	7,418 [1.3]	572 [5.1]
		売主 [前月比]	54,897 [0.5]	11,902 [0.7]	25,106 [-0.2]	16,086 [1.3]	1,570 [0.0]	233 [5.9]
		代理 [前月比]	3,560 [0.5]	1,097 [-1.4]	674 [1.5]	1,309 [0.9]	430 [3.1]	50 [-2.0]
		総 計 [前月比]	539,261 [-0.3]	439,514 [-0.2]	14,638 [4.0]	3,905 [-0.4]	9,537 [-2.3]	71,667 [-1.4]
	賃 地 賃 物 別	北海道 [前月比]	3,372 [16.1]	2,890 [18.2]	92 [3.4]	51 [-1.9]	51 [13.3]	288 [5.5]
		東北 [前月比]	9,457 [9.6]	7,809 [12.0]	322 [0.0]	128 [1.6]	168 [-4.0]	1,030 [-0.6]
関東甲信越 [前月比]		16,144 [10.7]	13,183 [13.3]	573 [2.3]	314 [-0.6]	398 [-6.6]	1,676 [2.1]	
首都圏 [前月比]		360,541 [-1.7]	303,675 [-1.9]	5,312 [2.1]	1,220 [-0.7]	3,932 [-1.7]	46,402 [-1.0]	
中部4県 [前月比]		7,593 [-3.9]	5,051 [-6.2]	536 [1.3]	202 [-0.5]	550 [1.5]	1,254 [1.2]	
中部圏 [前月比]		6,932 [-1.6]	4,454 [-1.6]	267 [-2.2]	402 [-1.2]	303 [-5.9]	1,506 [-0.5]	
近畿圏 [前月比]		104,745 [4.6]	81,185 [6.0]	5,476 [11.5]	869 [1.4]	2,939 [-3.8]	14,276 [-2.7]	
中国 [前月比]		4,417 [-8.1]	2,561 [-12.1]	574 [-4.2]	150 [0.7]	287 [3.2]	845 [-2.1]	
四国 [前月比]		2,434 [0.2]	1,447 [0.3]	266 [3.1]	92 [0.0]	160 [1.3]	469 [-1.7]	
九州 [前月比]		23,626 [-7.7]	17,259 [-8.6]	1,220 [-8.1]	477 [-2.5]	749 [-2.0]	3,921 [-4.9]	