

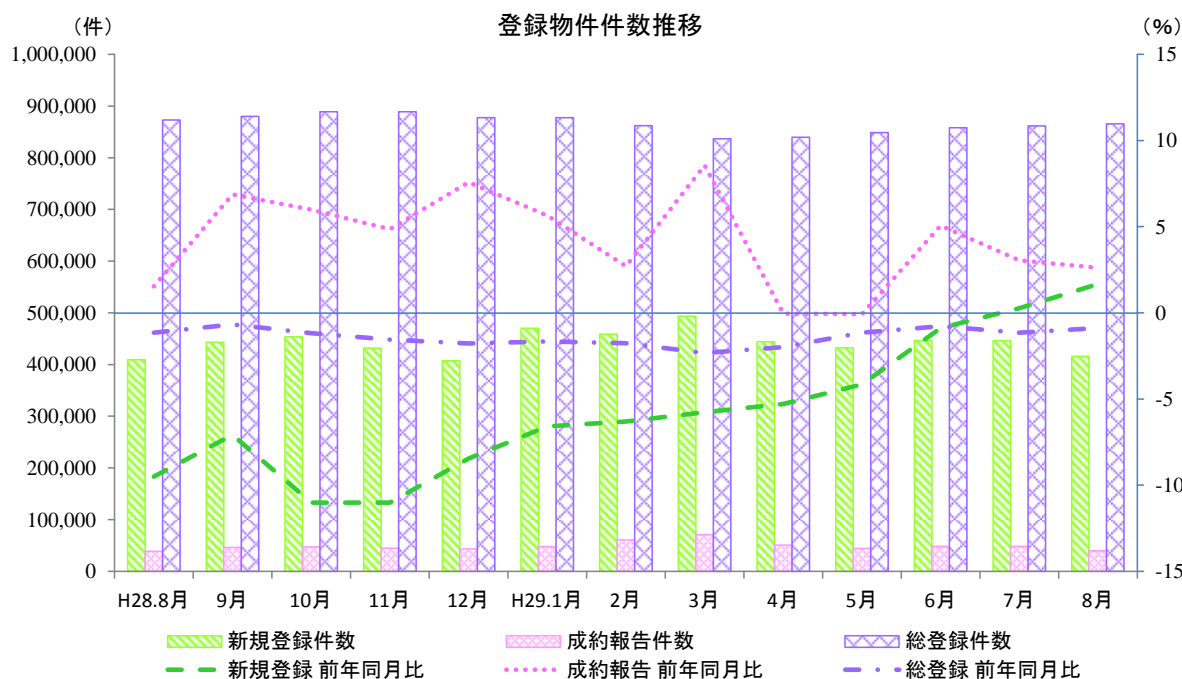
指定流通機構の活用状況について (平成29年8月分)

平成29年9月20日(水)
公益財団法人不動産流通推進センター
不動産流通センター研究所
小川・麻
TEL: 03-5843-2065

* 当センターのホームページでご覧いただけます。URL <http://www.retpc.jp>

1. 概況

平成29年8月の指定流通機構の活用状況を見ると、新規登録件数は415,899件と前年同月比で2ヶ月連続してプラスとなり、前月比では3ヶ月ぶりにマイナスに転じた。成約報告件数は39,659件と前年同月比で3ヶ月連続してプラスとなり、前月比では2ヶ月連続してマイナスとなった。総登録件数は865,473件と前年同月比で17ヶ月連続してマイナスとなり、前月比では5ヶ月連続してプラスとなった。

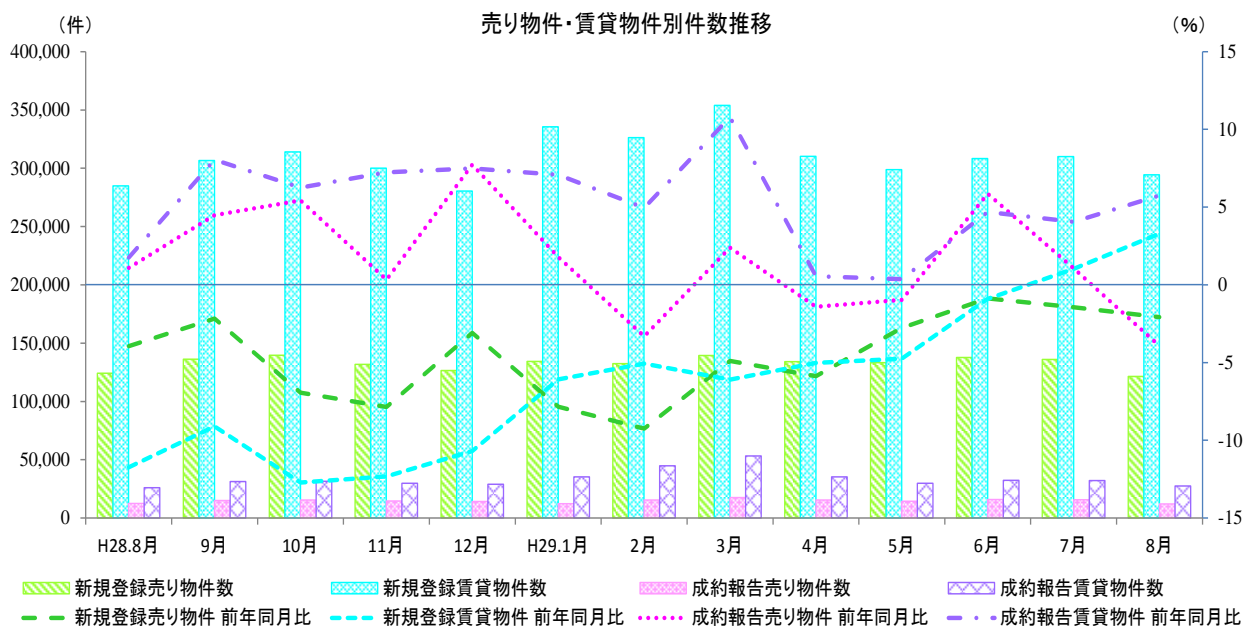


	H28.8月	9月	10月	11月	12月	H29.1月	2月	3月	4月	5月	6月	7月	8月
新規登録件数(件)	409,084	443,021	453,515	431,790	407,075	470,025	458,593	493,287	444,391	432,362	446,041	446,180	415,899
前年同月比(%)	▲9.5	▲7.1	▲11.0	▲11.0	▲8.5	▲6.6	▲6.3	▲5.8	▲5.3	▲4.2	▲0.9	0.3	1.7
前月比(%)	▲8.1	8.3	2.4	▲4.8	▲5.7	15.5	▲2.4	7.6	▲9.9	▲2.7	3.2	0.0	▲6.8
成約報告件数(件)	38,649	46,358	47,219	44,601	43,072	47,837	60,493	71,033	50,912	44,435	48,125	48,013	39,659
前年同月比(%)	1.5	6.9	6.0	4.9	7.6	5.7	2.7	8.6	▲0.1	▲0.1	5.1	3.1	2.6
前月比(%)	▲17.0	19.9	1.9	▲5.5	▲3.4	11.1	26.5	17.4	▲28.3	▲12.7	8.3	▲0.2	▲17.4
総登録件数(件)	873,166	879,862	888,688	889,091	877,340	877,684	861,882	836,869	839,485	848,722	858,004	861,516	865,473
前年同月比(%)	▲1.2	▲0.7	▲1.2	▲1.6	▲1.8	▲1.7	▲1.8	▲2.3	▲2.0	▲1.1	▲0.8	▲1.2	▲0.9
前月比(%)	0.2	0.8	1.0	0.0	▲1.3	0.0	▲1.8	▲2.9	0.3	1.1	1.1	0.4	0.5

2. 売り・賃貸別物件数

平成29年8月の売り物件数をみると、新規登録件数は121,567件と前年同月比で15ヶ月連続してマイナスとなり、前月比で2ヶ月連続してマイナスとなった。成約報告件数は12,052件と前年同月比で3ヶ月ぶりにマイナスに転じた、前月比で2ヶ月連続してマイナスとなった。総登録件数は318,002件と前年同月比で4ヶ月連続してプラスとなり、前月比で3ヶ月ぶりにマイナスに転じた。

平成29年8月の賃貸物件数をみると、新規登録件数は294,332件と前年同月比で2ヶ月連続してプラスとなり、前月比で3ヶ月ぶりにマイナスに転じた。成約報告件数は27,607件と前年同月比で17ヶ月連続してプラスとなり、前月比で2ヶ月連続してマイナスとなった。総登録件数は547,471件と前年同月比で28ヶ月連続してマイナスとなり、前月比で5ヶ月連続してプラスとなった。



売り物件・賃貸物件別件数

新規登録件数	415,899 件	前年同月比	1.7 %	➡	前月比	▲ 6.8 %	➡
売り物件数	121,567 件	前年同月比	▲ 2.1 %	➡	前月比	▲ 10.7 %	↓
賃貸物件数	294,332 件	前年同月比	3.3 %	↗	前月比	▲ 5.1 %	➡
成約報告件数	39,659 件	前年同月比	2.6 %	➡	前月比	▲ 17.4 %	↓
売り物件	12,052 件	前年同月比	▲ 3.9 %	➡	前月比	▲ 23.5 %	↓
賃貸物件	27,607 件	前年同月比	5.8 %	↗	前月比	▲ 14.4 %	↓
総登録件数	865,473 件	前年同月比	▲ 0.9 %	➡	前月比	0.5 %	➡
売り物件	318,002 件	前年同月比	0.3 %	➡	前月比	▲ 0.0 %	➡
賃貸物件	547,471 件	前年同月比	▲ 1.6 %	➡	前月比	0.8 %	➡
月間総検索数	34,598,417 件	前年同月比	8.8 %	↗	前月比	▲ 13.6 %	↓

凡例: ↑ 10% ~ ↗ 3% ~ 10% ➡ -3% ~ 3% ➡ -10% ~ -3% ↓ ~ -10%

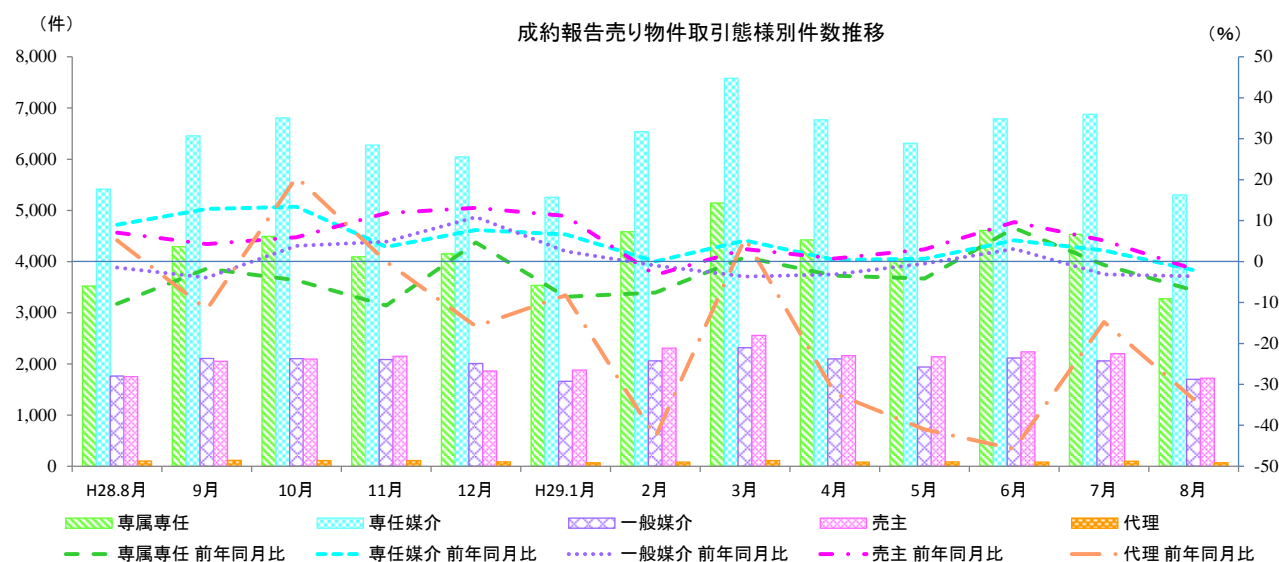
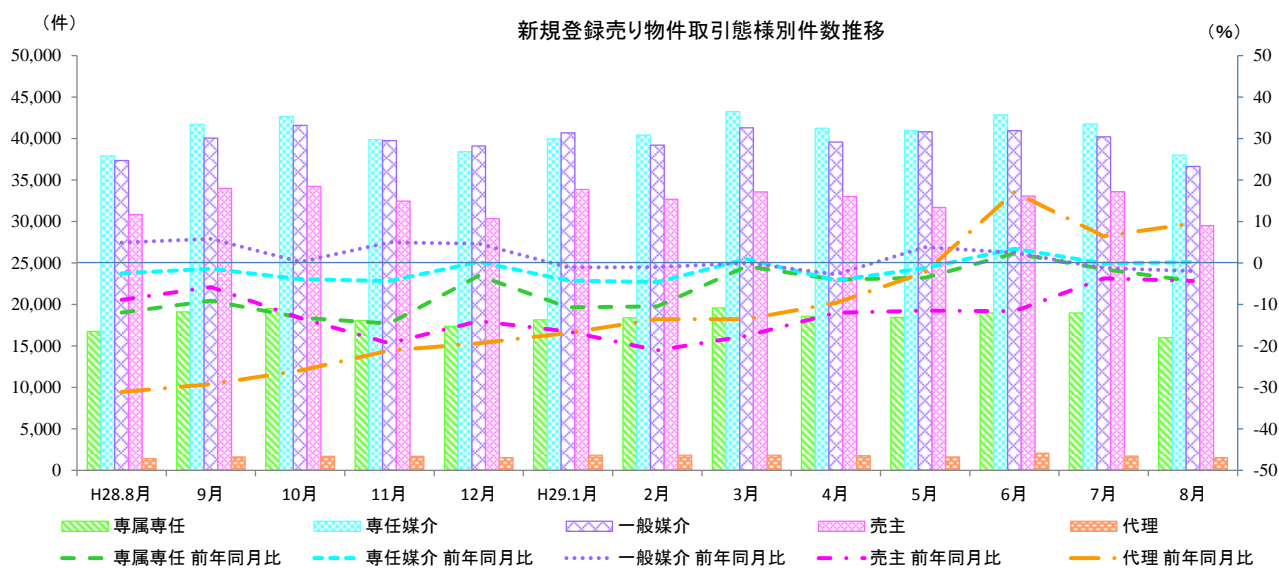
3. 売り物件の取引態様別物件数

平成29年8月の新規登録売り物件の取引態様別をみると、専任媒介は31.2%を占め、次いで一般媒介は30.1%を占めている。成約報告売り物件の取引態様別をみると、専任媒介は44.0%を占め、次いで専属専任は27.1%を占めている。

売り物件の取引態様別件数

	取引態様	H29年8月	構成比	前年同月比	前月比
新規登録件数	媒介契約	90,565 件	74.5 %	▲ 1.5 %	▲ 10.2 %
	専属専任	15,987 件	13.2 %	▲ 4.4 %	▲ 15.7 %
	専任媒介	37,974 件	31.2 %	0.2 %	▲ 9.0 %
	一般媒介	36,604 件	30.1 %	▲ 2.0 %	▲ 8.9 %
	売主	29,477 件	24.2 %	▲ 4.3 %	▲ 12.2 %
	代理	1,525 件	1.3 %	9.6 %	▲ 9.5 %
成約報告件数	媒介契約	10,268 件	85.2 %	▲ 4.0 %	▲ 23.7 %
	専属専任	3,272 件	27.1 %	▲ 7.0 %	▲ 27.8 %
	専任媒介	5,299 件	44.0 %	▲ 2.1 %	▲ 22.9 %
	一般媒介	1,697 件	14.1 %	▲ 3.6 %	▲ 17.5 %
	売主	1,717 件	14.2 %	▲ 1.8 %	▲ 21.8 %
	代理	67 件	0.6 %	▲ 33.7 %	▲ 31.6 %

凡例: ▲ 10% ~ ▲ 3% ~ 10% ▲ -3% ~ 3% ▼ -10% ~ -3% ▼ ~ -10%



指定流通機構実態調査集計、総括表 新規登録件数

		総数	物件種別				住宅外全部	住宅外一部
			マンション	一戸建	土地			
全	総計件数 [前月比]	415,899 [-6.8]	288,643 [-5.9]	52,593 [-8.9]	42,668 [-7.9]	10,862 [-7.4]	21,133 [-10.5]	
売 り 物 件	総計 [前月比]	121,567 [-10.7]	34,108 [-13.6]	39,046 [-10.5]	41,557 [-8.3]	6,414 [-10.4]	442 [-20.6]	
	北海道 [前月比]	2,681 [0.8]	585 [-11.8]	706 [2.2]	1,160 [8.0]	223 [-2.6]	7 [133.3]	
	東北 [前月比]	2,734 [-7.1]	480 [-16.8]	1,070 [-4.5]	1,029 [-8.7]	145 [33.0]	10 [25.0]	
	関東甲信越 [前月比]	5,114 [-1.3]	431 [-11.1]	1,751 [10.9]	2,650 [-5.4]	278 [-10.6]	4 [0.0]	
	首都圏 [前月比]	39,287 [-16.1]	18,731 [-15.5]	11,672 [-16.6]	6,638 [-15.7]	2,016 [-17.2]	230 [-29.9]	
	中部4県 [前月比]	3,455 [-30.0]	483 [-14.8]	1,125 [-23.4]	1,668 [-37.3]	177 [-24.7]	2 [-66.7]	
	中部圏 [前月比]	5,763 [-12.3]	1,266 [-11.7]	1,792 [-14.2]	2,436 [-10.3]	254 [-18.6]	15 [-21.1]	
	近畿圏 [前月比]	16,311 [-16.5]	5,192 [-15.8]	6,683 [-17.8]	3,686 [-16.2]	682 [-10.6]	68 [-12.8]	
	中国 [前月比]	8,391 [-6.6]	622 [-15.0]	2,697 [-9.1]	4,701 [-4.4]	363 [1.4]	8 [0.0]	
	四国 [前月比]	8,202 [2.3]	359 [-3.5]	2,097 [-5.2]	4,982 [6.7]	757 [0.3]	7 [-41.7]	
	九州 [前月比]	29,629 [-2.8]	5,959 [-5.4]	9,453 [0.7]	12,607 [-3.5]	1,519 [-8.2]	91 [0.0]	
	取引態 様別	専属専任 [前月比]	15,987 [-15.7]	5,176 [-20.7]	4,376 [-18.1]	5,507 [-6.8]	875 [-21.3]	53 [-15.9]
	専任媒介 [前月比]	37,974 [-9.0]	10,687 [-13.3]	10,584 [-8.5]	14,546 [-6.3]	2,034 [-5.8]	123 [-12.8]	
	一般媒介 [前月比]	36,604 [-8.9]	8,051 [-12.3]	10,792 [-6.1]	14,967 [-9.1]	2,635 [-7.8]	159 [-10.2]	
	売主 [前月比]	29,477 [-12.2]	9,707 [-10.3]	12,931 [-13.1]	6,014 [-11.8]	732 [-19.6]	93 [-41.1]	
	代理 [前月比]	1,525 [-9.5]	487 [-20.6]	363 [1.1]	523 [-9.0]	138 [14.0]	14 [-22.2]	
	賃 物 件	総計 [前月比]	294,332 [-5.1]	254,535 [-4.8]	13,547 [-3.9]	1,111 [7.2]	4,448 [-2.7]	20,691 [-10.3]
	賃 地 域 別	北海道 [前月比]	595 [-10.1]	509 [-5.6]	45 [4.7]	5 [0.0]	6 [-25.0]	30 [-55.2]
		東北 [前月比]	1,740 [-2.6]	1,376 [2.2]	149 [15.5]	19 [18.8]	24 [-11.1]	172 [-35.8]
		関東甲信越 [前月比]	2,497 [-10.7]	1,797 [-14.7]	281 [-3.1]	34 [-10.5]	65 [-20.7]	320 [14.7]
首都圏 [前月比]		158,938 [-6.9]	142,780 [-6.7]	4,578 [-3.1]	226 [1.3]	1,360 [-1.2]	9,994 [-12.7]	
中部4県 [前月比]		2,154 [-25.4]	1,479 [-24.8]	185 [-31.5]	52 [18.2]	174 [-15.1]	264 [-33.8]	
中部圏 [前月比]		1,808 [-0.2]	1,270 [6.0]	98 [-2.0]	54 [17.4]	82 [-6.8]	304 [-20.0]	
近畿圏 [前月比]		44,281 [-2.5]	37,209 [-0.9]	2,636 [-10.0]	206 [15.7]	919 [-12.1]	3,311 [-11.8]	
中国 [前月比]		9,883 [5.7]	7,632 [5.9]	1,220 [8.8]	58 [23.4]	203 [1.5]	770 [-0.8]	
四国 [前月比]		5,411 [-4.4]	3,424 [-7.0]	671 [-7.4]	107 [33.8]	558 [4.9]	651 [1.1]	
九州 [前月比]		67,025 [-2.7]	57,059 [-2.9]	3,684 [-2.0]	350 [-2.5]	1,057 [5.1]	4,875 [-3.2]	

* 前月比欄の数値は、対前月増減率である。

* 「関東甲信越」は、茨城県・栃木県・群馬県・新潟県・山梨県・長野県、「首都圏」は、東京都・千葉県・埼玉県・神奈川県、「中部圏」は、愛知県・岐阜県・三重県、「中部4県」は、富山県・石川県・福井県・静岡県、「近畿圏」は、大阪府・京都府・兵庫県・滋賀県・奈良県・和歌山県をいう。

指定流通機構実態調査 売り物件・新規登録件数 時系列表

	28年8月	28年9月	28年10月	28年11月	28年12月	29年1月	29年2月	29年3月	29年4月	29年5月	29年6月	29年7月	29年8月	一年間計		
	件数 (前月比) [前年比]	件数 (前月比) [前年比]	件数 (前月比) [前年比]	件数 (前月比) [前年比]	件数 (前月比) [前年比]	件数 (前月比) [前年比]	件数 (前月比) [前年比]	件数 (前月比) [前年比]	件数 (前月比) [前年比]	件数 (前月比) [前年比]	件数 (前月比) [前年比]	件数 (前月比) [前年比]	件数 (前月比) [前年比]	件数 (前月比) [前年比]		
総数	124,146 (-10.1) [-3.9]	136,359 (9.8) [-2.2]	139,555 (2.3) [-6.9]	131,754 (-5.6) [-7.9]	126,636 (-3.9) [-3.1]	134,394 (6.1) [-7.8]	132,381 (-1.5) [-9.2]	139,379 (5.3) [-4.9]	134,063 (-3.8) [-5.9]	133,419 (-0.5) [-2.8]	137,759 (3.3) [-0.9]	136,126 (-1.2) [-1.4]	121,567 (-10.7) [-2.1]	1,603,392 (1.8)		
地域別	北海道	2,561 (-6.3) [-7.7]	2,693 (5.2) [-6.8]	2,451 (-9.0) [-11.7]	2,291 (-6.5) [-11.2]	2,035 (-11.2) [-3.0]	2,309 (13.5) [-7.6]	2,184 (-5.4) [-9.5]	2,483 (13.7) [-4.5]	2,350 (-5.4) [-11.9]	2,617 (11.4) [4.5]	2,772 (5.9) [6.0]	2,660 (-4.0) [-2.7]	2,681 (0.8) [4.7]	29,526 (2.1)	
	東北	2,660 (-13.6) [-6.1]	2,965 (11.5) [11.0]	3,140 (5.9) [-4.1]	2,633 (-16.1) [-11.7]	2,407 (-8.6) [-9.8]	2,625 (9.1) [-18.2]	2,678 (2.0) [-8.6]	2,923 (9.1) [-3.0]	2,930 (0.2) [-10.6]	2,885 (-1.5) [1.5]	3,168 (9.8) [2.9]	2,942 (-7.1) [-4.4]	2,734 (-7.1) [2.8]	34,030 (4.3)	
	関東甲信越	4,682 (-14.2) [-0.4]	5,124 (9.4) [-1.5]	5,157 (0.6) [-3.7]	4,941 (-4.2) [-2.9]	4,170 (-15.6) [-3.3]	4,857 (16.5) [-1.0]	4,884 (0.6) [-2.4]	4,930 (0.9) [-1.1]	5,161 (4.7) [5.1]	5,276 (2.2) [8.2]	5,317 (0.8) [-3.6]	5,181 (-2.6) [-5.1]	5,114 (-1.3) [9.2]	60,112 (3.7)	
	首都圏	39,948 (-16.1) [-13.7]	47,014 (17.7) [-8.5]	48,159 (2.4) [-14.6]	44,761 (-7.1) [-18.6]	40,113 (-10.4) [-14.3]	44,769 (11.6) [-17.9]	45,696 (2.1) [-19.9]	46,565 (1.9) [-17.7]	46,154 (-0.9) [-14.6]	42,737 (-7.4) [-12.8]	46,191 (8.1) [-6.7]	46,813 (1.3) [-1.7]	39,287 (-16.1) [-1.7]	538,259 (33.6)	
	中部4県	6,309 (1.5) [10.7]	5,929 (-6.0) [-7.9]	5,922 (-0.1) [-5.5]	6,206 (4.8) [8.4]	5,651 (-8.9) [7.0]	6,048 (7.0) [-6.3]	5,574 (-7.8) [-7.8]	6,006 (7.8) [-9.2]	5,804 (-3.4) [-7.1]	5,802 (0.0) [-4.8]	6,833 (17.8) [1.4]	4,938 (-27.7) [-20.5]	3,455 (-30.0) [-45.2]	68,168 (4.3)	
	中部圏	5,925 (-9.4) [-1.9]	6,450 (8.9) [-1.4]	6,761 (4.8) [-4.3]	6,364 (-5.9) [-0.3]	6,241 (-1.9) [10.2]	6,539 (4.8) [-5.1]	6,553 (0.2) [-3.7]	6,790 (3.6) [-0.7]	6,566 (-3.3) [1.1]	6,597 (0.5) [2.0]	6,746 (2.3) [0.1]	6,570 (-2.6) [0.4]	5,763 (-12.3) [-2.7]	77,940 (4.9)	
	近畿圏	17,562 (-15.0) [-1.3]	20,217 (15.1) [-2.5]	20,942 (3.6) [0.3]	19,137 (-8.6) [-6.3]	17,720 (-7.4) [1.6]	19,723 (11.3) [-6.0]	19,799 (0.4) [-1.8]	20,975 (5.9) [3.5]	19,954 (-4.9) [0.5]	19,372 (-2.9) [0.5]	19,109 (-1.4) [-1.9]	19,533 (2.2) [-5.4]	16,311 (-16.5) [-7.1]	232,792 (14.5)	
	中国	7,773 (-3.8) [-10.4]	8,447 (8.7) [-5.6]	8,657 (2.5) [-7.9]	7,876 (-9.0) [-10.9]	8,855 (12.4) [4.8]	8,832 (-0.3) [2.1]	8,183 (-7.3) [-4.7]	8,969 (9.6) [7.6]	8,359 (-6.8) [0.5]	8,649 (3.5) [0.6]	8,885 (0.4) [6.7]	8,981 (3.4) [11.1]	8,391 (-6.6) [8.0]	102,884 (6.4)	
	四国	7,131 (-5.0) [23.9]	7,290 (2.2) [27.5]	7,641 (4.8) [16.2]	7,826 (2.4) [30.7]	7,925 (1.3) [14.5]	8,272 (4.4) [12.9]	7,497 (-9.4) [14.8]	8,418 (12.3) [18.5]	7,856 (-6.7) [8.6]	7,943 (1.1) [13.8]	8,131 (2.4) [15.0]	8,018 (-1.4) [6.9]	8,202 (2.3) [15.0]	95,019 (5.9)	
	九州	29,595 (-2.1) [3.2]	30,230 (2.1) [4.8]	30,725 (1.6) [-3.9]	29,719 (-3.3) [-0.9]	31,519 (6.1) [1.6]	30,420 (-3.5) [0.1]	29,333 (-3.6) [-3.3]	31,320 (6.8) [3.7]	28,929 (-7.6) [-1.7]	31,541 (9.0) [3.2]	30,807 (-2.3) [2.4]	30,490 (-1.0) [0.9]	29,629 (-2.8) [0.1]	364,662 (22.7)	
	取引態様別	専属専任媒介	16,718 (-13.1) [-11.9]	19,080 (14.1) [-9.1]	19,483 (2.1) [-13.2]	18,043 (-7.4) [-14.6]	17,342 (-3.9) [-3.1]	18,136 (4.6) [-10.7]	18,358 (1.2) [-10.4]	19,550 (6.5) [-0.8]	18,559 (-5.1) [-4.0]	18,411 (-0.8) [-3.6]	18,937 (2.9) [2.4]	18,956 (0.1) [-1.5]	15,987 (-15.7) [-4.4]	220,842 (13.8)
		専任媒介	37,892 (-9.3) [-2.5]	41,705 (10.1) [-1.3]	42,624 (2.2) [-3.9]	39,848 (-6.5) [-4.3]	38,394 (-3.6) [0.2]	39,936 (4.0) [-4.2]	40,393 (1.1) [-4.6]	43,225 (7.0) [1.0]	41,220 (-4.6) [-4.2]	40,945 (-0.7) [-1.2]	42,819 (4.6) [3.4]	41,723 (-2.6) [-0.1]	37,974 (-9.0) [0.2]	490,806 (30.6)
一般媒介		37,332 (-8.2) [4.9]	40,033 (7.2) [5.8]	41,573 (3.8) [0.3]	39,742 (-4.4) [5.0]	39,077 (-1.7) [4.6]	40,668 (4.1) [-1.1]	39,180 (-3.7) [-1.0]	41,262 (5.3) [0.0]	39,552 (-4.1) [-2.7]	40,795 (3.1) [3.8]	40,918 (0.3) [2.5]	40,176 (-1.8) [-1.2]	36,604 (-8.9) [-2.0]	479,580 (29.9)	
売主		30,812 (-11.7) [-8.9]	33,959 (10.2) [-5.8]	34,208 (0.7) [-13.3]	32,446 (-5.2) [-19.4]	30,308 (-6.6) [-14.0]	33,839 (11.7) [-16.5]	32,657 (-3.5) [-21.0]	33,543 (2.7) [-17.6]	32,981 (-1.7) [-12.0]	31,667 (-4.0) [-11.5]	33,041 (4.3) [-11.6]	33,585 (1.6) [-3.7]	29,477 (-12.2) [-4.3]	391,711 (24.4)	
代理		1,392 (-12.1) [-31.1]	1,582 (13.6) [-29.2]	1,667 (5.4) [-25.9]	1,675 (0.5) [-21.1]	1,515 (-9.6) [-19.4]	1,815 (19.8) [-16.9]	1,793 (-1.2) [-13.5]	1,799 (0.3) [-13.6]	1,751 (-2.7) [-9.6]	1,601 (-8.6) [-2.2]	2,044 (21.7) [17.1]	1,686 (-17.5) [6.4]	1,525 (-9.5) [9.6]	20,453 (1.3)	
物件種類別		マンション	33,100 (-13.2) [-10.6]	38,029 (14.9) [-7.4]	39,567 (4.0) [-9.6]	36,241 (-8.4) [-15.6]	34,765 (-4.1) [-10.2]	38,080 (9.5) [-13.4]	38,349 (0.7) [-17.1]	39,809 (3.8) [-14.9]	38,477 (-3.3) [-12.6]	37,119 (-3.5) [-8.3]	39,128 (5.4) [1.6]	39,469 (0.9) [3.5]	34,108 (-13.6) [3.0]	453,141 (28.3)
	一戸建	39,967 (-10.7) [0.4]	43,600 (9.1) [1.9]	44,176 (1.3) [-4.2]	43,142 (-2.3) [-1.2]	40,181 (-6.9) [2.6]	43,117 (7.3) [-1.4]	43,127 (0.0) [-0.6]	43,978 (2.0) [3.1]	43,680 (-0.7) [2.5]	43,255 (-1.0) [2.0]	43,109 (-0.3) [-5.9]	43,640 (1.2) [-2.5]	39,046 (-10.5) [-2.3]	514,051 (32.1)	
	土地	44,331 (-7.7) [-3.2]	47,493 (7.1) [1.1]	48,000 (1.1) [-7.7]	45,100 (-6.0) [-6.7]	44,786 (-0.7) [-1.7]	45,673 (2.0) [-9.5]	43,701 (-4.3) [-9.4]	48,085 (10.0) [-2.0]	44,455 (-7.5) [-8.8]	45,648 (2.7) [-3.4]	47,822 (4.8) [0.6]	45,298 (-5.3) [0.6]	41,557 (-8.3) [-6.3]	547,618 (34.2)	
	住宅外(全部)	6,199 (-7.2) [1.9]	6,651 (7.3) [0.4]	7,152 (7.5) [1.1]	6,643 (-7.1) [-2.0]	6,337 (-4.6) [3.0]	6,917 (9.2) [6.8]	6,694 (-3.2) [-1.3]	6,987 (4.4) [2.0]	6,875 (-1.6) [8.5]	6,870 (-0.1) [6.9]	7,153 (4.1) [11.9]	7,162 (0.1) [7.2]	6,414 (-10.4) [3.5]	81,855 (5.1)	
	住宅外(一部)	549 (-2.3) [2.8]	586 (6.7) [-3.0]	660 (12.6) [-36.8]	628 (-4.8) [-50.5]	567 (-9.7) [-48.5]	607 (7.1) [-49.9]	510 (-16.0) [-58.0]	520 (2.0) [-56.3]	576 (10.8) [-23.1]	527 (-8.5) [-20.4]	547 (3.8) [-18.5]	557 (1.8) [-0.9]	442 (-20.6) [-19.5]	6,727 (0.4)	

※ 構成比は、四捨五入による端数処理のため内数の合計が100%にならないことがある

指定流通機構実態調査集計、総括表 地域別取引態様別売物件月間新規登録件数

地域	取引態様	総数	物件種別				
			マンション	一戸建	土地	住宅外全部	住宅外一部
北海道	専属専任 [構成比]	485 [18.1]	145 [24.8]	110 [15.6]	188 [16.2]	40 [17.9]	2 [28.6]
	専任媒介 [構成比]	1,346 [50.2]	244 [41.7]	367 [52.0]	621 [53.5]	113 [50.7]	1 [14.3]
	一般媒介 [構成比]	601 [22.4]	121 [20.7]	139 [19.7]	282 [24.3]	55 [24.7]	4 [57.1]
	売主 [構成比]	232 [8.7]	65 [11.1]	86 [12.2]	66 [5.7]	15 [6.7]	0 [0.0]
	代理 [構成比]	17 [0.6]	10 [1.7]	4 [0.6]	3 [0.3]	0 [0.0]	0 [0.0]
	合計 [地域比]	2,681 [2.2]	585 [1.7]	706 [1.8]	1,160 [2.8]	223 [3.5]	7 [1.6]
東北	専属専任 [構成比]	325 [11.9]	72 [15.0]	91 [8.5]	137 [13.3]	21 [14.5]	4 [40.0]
	専任媒介 [構成比]	981 [35.9]	192 [40.0]	343 [32.1]	387 [37.6]	56 [38.6]	3 [30.0]
	一般媒介 [構成比]	838 [30.7]	138 [28.8]	300 [28.0]	339 [32.9]	58 [40.0]	3 [30.0]
	売主 [構成比]	561 [20.5]	76 [15.8]	328 [30.7]	147 [14.3]	10 [6.9]	0 [0.0]
	代理 [構成比]	29 [1.1]	2 [0.4]	8 [0.7]	19 [1.8]	0 [0.0]	0 [0.0]
	合計 [地域比]	2,734 [2.2]	480 [1.4]	1,070 [2.7]	1,029 [2.5]	145 [2.3]	10 [2.3]
関東甲信越	専属専任 [構成比]	358 [7.0]	32 [7.4]	87 [5.0]	204 [7.7]	35 [12.6]	0 [0.0]
	専任媒介 [構成比]	1,768 [34.6]	179 [41.5]	493 [28.2]	1,012 [38.2]	82 [29.5]	2 [50.0]
	一般媒介 [構成比]	1,652 [32.3]	180 [41.8]	418 [23.9]	919 [34.7]	133 [47.8]	2 [50.0]
	売主 [構成比]	1,270 [24.8]	35 [8.1]	738 [42.1]	476 [18.0]	21 [7.6]	0 [0.0]
	代理 [構成比]	66 [1.3]	5 [1.2]	15 [0.9]	39 [1.5]	7 [2.5]	0 [0.0]
	合計 [地域比]	5,114 [4.2]	431 [1.3]	1,751 [4.5]	2,650 [6.4]	278 [4.3]	4 [0.9]
首都圏	専属専任 [構成比]	5,557 [14.1]	2,802 [15.0]	1,170 [10.0]	1,212 [18.3]	342 [17.0]	31 [13.5]
	専任媒介 [構成比]	10,139 [25.8]	4,773 [25.5]	2,457 [21.1]	2,223 [33.5]	626 [31.1]	60 [26.1]
	一般媒介 [構成比]	5,465 [13.9]	3,003 [16.0]	1,048 [9.0]	883 [13.3]	477 [23.7]	54 [23.5]
	売主 [構成比]	17,321 [44.1]	7,796 [41.6]	6,777 [58.1]	2,202 [33.2]	472 [23.4]	74 [32.2]
	代理 [構成比]	805 [2.0]	357 [1.9]	220 [1.9]	118 [1.8]	99 [4.9]	11 [4.8]
	合計 [地域比]	39,287 [32.3]	18,731 [54.9]	11,672 [29.9]	6,638 [16.0]	2,016 [31.4]	230 [52.0]
中部四県	専属専任 [構成比]	375 [10.9]	35 [7.2]	126 [11.2]	189 [11.3]	24 [13.6]	1 [50.0]
	専任媒介 [構成比]	1,364 [39.5]	203 [42.0]	402 [35.7]	698 [41.8]	60 [33.9]	1 [50.0]
	一般媒介 [構成比]	1,289 [37.3]	211 [43.7]	421 [37.4]	577 [34.6]	80 [45.2]	0 [0.0]
	売主 [構成比]	405 [11.7]	34 [7.0]	171 [15.2]	189 [11.3]	11 [6.2]	0 [0.0]
	代理 [構成比]	22 [0.6]	0 [0.0]	5 [0.4]	15 [0.9]	2 [1.1]	0 [0.0]
	合計 [地域比]	3,455 [2.8]	483 [1.4]	1,125 [2.9]	1,668 [4.0]	177 [2.8]	2 [0.5]
中部圏	専属専任 [構成比]	718 [12.5]	214 [16.9]	151 [8.4]	323 [13.3]	29 [11.4]	1 [6.7]
	専任媒介 [構成比]	1,932 [33.5]	496 [39.2]	409 [22.8]	958 [39.3]	66 [26.0]	3 [20.0]
	一般媒介 [構成比]	1,753 [30.4]	318 [25.1]	427 [23.8]	855 [35.1]	143 [56.3]	10 [66.7]
	売主 [構成比]	1,341 [23.3]	236 [18.6]	805 [44.9]	285 [11.7]	14 [5.5]	1 [6.7]
	代理 [構成比]	19 [0.3]	2 [0.2]	0 [0.0]	15 [0.6]	2 [0.8]	0 [0.0]
	合計 [地域比]	5,763 [4.7]	1,266 [3.7]	1,792 [4.6]	2,436 [5.9]	254 [4.0]	15 [3.4]
近畿圏	専属専任 [構成比]	4,013 [24.6]	1,354 [26.1]	1,582 [23.7]	910 [24.7]	159 [23.3]	8 [11.8]
	専任媒介 [構成比]	5,019 [30.8]	1,965 [37.8]	1,689 [25.3]	1,122 [30.4]	217 [31.8]	26 [38.2]
	一般媒介 [構成比]	3,496 [21.4]	1,191 [22.9]	1,218 [18.2]	862 [23.4]	198 [29.0]	27 [39.7]
	売主 [構成比]	3,553 [21.8]	628 [12.1]	2,114 [31.6]	718 [19.5]	89 [13.0]	4 [5.9]
	代理 [構成比]	230 [1.4]	54 [1.0]	80 [1.2]	74 [2.0]	19 [2.8]	3 [4.4]
	合計 [地域比]	16,311 [13.4]	5,192 [15.2]	6,683 [17.1]	3,686 [8.9]	682 [10.6]	68 [15.4]
中国	専属専任 [構成比]	1,109 [13.2]	115 [18.5]	331 [12.3]	606 [12.9]	57 [15.7]	0 [0.0]
	専任媒介 [構成比]	3,533 [42.1]	346 [55.6]	1,187 [44.0]	1,865 [39.7]	132 [36.4]	3 [37.5]
	一般媒介 [構成比]	2,735 [32.6]	140 [22.5]	846 [31.4]	1,585 [33.7]	159 [43.8]	5 [62.5]
	売主 [構成比]	925 [11.0]	15 [2.4]	323 [12.0]	573 [12.2]	14 [3.9]	0 [0.0]
	代理 [構成比]	89 [1.1]	6 [1.0]	10 [0.4]	72 [1.5]	1 [0.3]	0 [0.0]
	合計 [地域比]	8,391 [6.9]	622 [1.8]	2,697 [6.9]	4,701 [11.3]	363 [5.7]	8 [1.8]
四国	専属専任 [構成比]	553 [6.7]	28 [7.8]	146 [7.0]	352 [7.1]	27 [3.6]	0 [0.0]
	専任媒介 [構成比]	1,895 [23.1]	162 [45.1]	416 [19.8]	1,115 [22.4]	200 [26.4]	2 [28.6]
	一般媒介 [構成比]	4,983 [60.8]	153 [42.6]	1,203 [57.4]	3,111 [62.4]	511 [67.5]	5 [71.4]
	売主 [構成比]	695 [8.5]	16 [4.5]	331 [15.8]	330 [6.6]	18 [2.4]	0 [0.0]
	代理 [構成比]	76 [0.9]	0 [0.0]	1 [0.0]	74 [1.5]	1 [0.1]	0 [0.0]
	合計 [地域比]	8,202 [6.7]	359 [1.1]	2,097 [5.4]	4,982 [12.0]	757 [11.8]	7 [1.6]
九州	専属専任 [構成比]	2,494 [8.4]	379 [6.4]	582 [6.2]	1,386 [11.0]	141 [9.3]	6 [6.6]
	専任媒介 [構成比]	9,997 [33.7]	2,127 [35.7]	2,821 [29.8]	4,545 [36.1]	482 [31.7]	22 [24.2]
	一般媒介 [構成比]	13,792 [46.5]	2,596 [43.6]	4,772 [50.5]	5,554 [44.1]	821 [54.0]	49 [53.8]
	売主 [構成比]	3,174 [10.7]	806 [13.5]	1,258 [13.3]	1,028 [8.2]	68 [4.5]	14 [15.4]
	代理 [構成比]	172 [0.6]	51 [0.9]	20 [0.2]	94 [0.7]	7 [0.5]	0 [0.0]
	合計 [地域比]	29,629 [24.4]	5,959 [17.5]	9,453 [24.2]	12,607 [30.3]	1,519 [23.7]	91 [20.6]
全国	専属専任 [構成比]	15,987 [13.2]	5,176 [15.2]	4,376 [11.2]	5,507 [13.3]	875 [13.6]	53 [12.0]
	専任媒介 [構成比]	37,974 [31.2]	10,687 [31.3]	10,584 [27.1]	14,546 [35.0]	2,034 [31.7]	123 [27.8]
	一般媒介 [構成比]	36,604 [30.1]	8,051 [23.6]	10,792 [27.6]	14,967 [36.0]	2,635 [41.1]	159 [36.0]
	売主 [構成比]	29,477 [24.2]	9,707 [28.5]	12,931 [33.1]	6,014 [14.5]	732 [11.4]	93 [21.0]
	代理 [構成比]	1,525 [1.3]	487 [1.4]	363 [0.9]	523 [1.3]	138 [2.2]	14 [3.2]
	合計	121,567	34,108	39,046	41,557	6,414	442

※構成比とは地域内の取引態様別構成比で、地域比とは全国合計の地域別シェアである。

※構成比・地域比は、四捨五入による端数処理のため内数の合計が100%にならないことがある。

指定流通機構実態調査集計、総括表 月間成約件数

		総 数	物 件 種 別				
			マンション	一 戸 建	土 地	住宅外全部	住宅外一部
全 総計件数		39,659	28,516	5,252	3,056	742	2,093
[前月比]		[-17.4]	[-17.0]	[-19.9]	[-22.2]	[-15.3]	[-8.4]
売 地 り 域 物 別 件 別	総 計	12,052	4,593	4,041	3,010	363	45
	[前月比]	[-23.5]	[-28.0]	[-20.2]	[-21.8]	[-11.7]	[-16.7]
	北海道	709	194	200	277	37	1
	[前月比]	[-20.4]	[-27.1]	[-27.8]	[-6.4]	[-27.5]	[0.0]
	東北	545	115	240	175	14	1
	[前月比]	[-22.7]	[-33.9]	[-16.1]	[-23.9]	[-6.7]	[-]
	関東甲信越	474	67	197	191	17	2
	[前月比]	[-23.4]	[-26.4]	[-20.2]	[-25.1]	[-29.2]	[0.0]
	首都圏	4,435	2,280	1,189	825	113	28
	[前月比]	[-28.6]	[-31.4]	[-24.2]	[-25.5]	[-35.1]	[-30.0]
	中部4県	419	82	163	157	16	1
	[前月比]	[-14.5]	[-12.8]	[-15.1]	[-19.1]	[166.7]	[-75.0]
	中部圏	1,033	294	333	368	35	3
	[前月比]	[-22.0]	[-28.8]	[-19.2]	[-21.7]	[25.0]	[200.0]
	近畿圏	2,778	1,087	1,129	486	69	7
	[前月比]	[-23.6]	[-25.1]	[-21.1]	[-28.5]	[-2.8]	[75.0]
	中国	462	110	196	146	9	1
	[前月比]	[-13.2]	[-4.3]	[-14.8]	[-15.6]	[-35.7]	[-]
	四国	163	34	64	57	8	0
	[前月比]	[-6.9]	[-24.4]	[-1.5]	[-5.0]	[60.0]	[-]
九州	1,034	330	330	328	45	1	
[前月比]	[-11.5]	[-17.9]	[-7.3]	[-14.8]	[95.7]	[-50.0]	
専属専任	3,272	1,502	901	770	93	6	
[前月比]	[-27.8]	[-28.4]	[-26.5]	[-28.4]	[-26.2]	[20.0]	
専任媒介	5,299	2,220	1,533	1,367	160	19	
[前月比]	[-22.9]	[-27.9]	[-19.9]	[-19.1]	[-8.6]	[5.6]	
一般媒介	1,697	526	567	515	80	9	
[前月比]	[-17.5]	[-27.9]	[-6.7]	[-17.2]	[-1.2]	[-40.0]	
売主	1,717	324	1,013	342	27	11	
[前月比]	[-21.8]	[-26.5]	[-20.5]	[-22.3]	[3.8]	[-26.7]	
代理	67	21	27	16	3	0	
[前月比]	[-31.6]	[-30.0]	[-34.1]	[-30.4]	[0.0]	[-100.0]	
総 計	27,607	23,923	1,211	46	379	2,048	
[前月比]	[-14.4]	[-14.5]	[-19.0]	[-39.5]	[-18.5]	[-8.2]	
賃 地 賃 域 物 別	北海道	94	83	9	0	1	1
	[前月比]	[-16.1]	[-12.6]	[-10.0]	[-]	[-]	[-85.7]
	東北	225	170	27	3	2	23
	[前月比]	[-24.0]	[-23.8]	[-20.6]	[200.0]	[-66.7]	[-28.1]
	関東甲信越	474	368	48	1	10	47
	[前月比]	[-5.8]	[-1.3]	[-30.4]	[0.0]	[-9.1]	[-4.1]
	首都圏	15,893	13,956	521	15	145	1,256
	[前月比]	[-15.9]	[-16.5]	[-19.0]	[-62.5]	[-22.9]	[-4.9]
	中部4県	282	193	38	3	26	22
	[前月比]	[-10.2]	[-11.1]	[-20.8]	[0.0]	[36.8]	[-18.5]
	中部圏	200	142	14	0	11	33
	[前月比]	[-16.7]	[-9.6]	[7.7]	[-100.0]	[-35.3]	[-28.3]
	近畿圏	7,815	6,741	387	17	144	526
	[前月比]	[-12.0]	[-12.1]	[-16.6]	[13.3]	[-16.3]	[-6.2]
中国	225	171	29	2	8	15	
[前月比]	[35.5]	[54.1]	[-6.5]	[100.0]	[0.0]	[0.0]	
四国	34	21	10	0	2	1	
[前月比]	[-30.6]	[-36.4]	[25.0]	[-100.0]	[0.0]	[-80.0]	
九州	2,365	2,078	128	5	30	124	
[前月比]	[-15.5]	[-13.7]	[-26.9]	[-28.6]	[-28.6]	[-26.2]	

* 成約件数は成約報告のあった件数である。

指定流通機構実態調査集計、総括表 当月末総登録件数

		総 数	物 件 種 別				
			マンション	一 戸 建	土 地	住宅外全部	住宅外一部
全 総計件数		865,473	506,652	116,683	134,408	30,463	77,267
[前月比]		[0.5]	[1.3]	[0.4]	[-1.2]	[-0.6]	[-1.5]
売 り 物 件	総 計	318,002	74,615	94,556	130,885	16,574	1,372
	[前月比]	[0.0]	[1.0]	[0.8]	[-1.2]	[0.2]	[0.4]
	北海道	12,166	1,852	2,577	6,772	945	20
	[前月比]	[2.4]	[2.2]	[4.1]	[2.0]	[1.0]	[-9.1]
	東北	14,121	1,718	4,450	7,289	627	37
	[前月比]	[1.3]	[4.1]	[2.7]	[-0.6]	[5.2]	[8.8]
	関東甲信越	31,079	1,778	8,036	19,723	1,494	48
	[前月比]	[0.6]	[-3.3]	[2.7]	[0.3]	[-1.2]	[-9.4]
	首都圏	113,077	43,169	32,986	29,847	6,346	729
	[前月比]	[0.8]	[1.3]	[1.0]	[0.0]	[1.2]	[0.0]
	中部4県	19,123	1,792	5,331	11,132	846	22
	[前月比]	[-4.1]	[-2.9]	[-2.4]	[-5.1]	[-2.4]	[-18.5]
	中部圏	26,486	3,905	7,375	14,017	1,122	67
	[前月比]	[-1.7]	[0.5]	[-0.7]	[-2.7]	[-2.7]	[6.3]
	近畿圏	54,021	13,629	20,936	16,577	2,550	329
	[前月比]	[-0.9]	[1.7]	[-0.2]	[-3.7]	[-1.2]	[5.8]
	中国	12,318	864	3,801	7,128	513	12
	[前月比]	[1.8]	[-4.2]	[2.5]	[2.0]	[4.5]	[-7.7]
	四国	7,213	481	1,625	4,691	406	10
	[前月比]	[-0.9]	[-0.2]	[0.0]	[-1.3]	[-1.0]	[-16.7]
九州	28,398	5,427	7,439	13,709	1,725	98	
[前月比]	[-0.5]	[0.0]	[1.1]	[-1.4]	[-0.4]	[-3.9]	
取引態 様 別	専属専任	49,597	15,389	14,218	17,047	2,744	199
[前月比]	[0.0]	[-0.2]	[-0.1]	[0.2]	[0.1]	[6.4]	
専任媒介	112,690	27,674	29,496	49,674	5,376	470	
[前月比]	[0.1]	[1.2]	[0.2]	[-0.5]	[0.4]	[-1.5]	
一般媒介	95,094	20,059	22,873	45,096	6,583	483	
[前月比]	[-1.3]	[0.3]	[0.1]	[-2.8]	[-0.1]	[3.0]	
売主	56,606	10,581	27,080	17,191	1,573	181	
[前月比]	[1.7]	[4.0]	[2.2]	[-0.1]	[-0.1]	[-7.7]	
代理	4,015	912	889	1,877	298	39	
[前月比]	[-1.1]	[-2.7]	[4.0]	[-3.2]	[2.1]	[5.4]	
賃 物 件	総 計	547,471	432,037	22,127	3,523	13,889	75,895
[前月比]	[0.8]	[1.3]	[-1.2]	[0.2]	[-1.5]	[-1.5]	
賃 地	北海道	1,784	1,309	113	31	68	263
[前月比]	[-3.4]	[-4.7]	[4.6]	[6.9]	[-6.8]	[0.0]	
東北	5,234	3,637	347	108	160	982	
[前月比]	[2.9]	[4.0]	[7.8]	[9.1]	[0.0]	[-2.7]	
関東甲信越	9,097	5,949	786	270	460	1,632	
[前月比]	[-0.7]	[-1.6]	[0.3]	[-2.9]	[0.4]	[2.1]	
首都圏	369,627	303,493	11,294	1,151	6,151	47,538	
[前月比]	[1.4]	[2.0]	[0.0]	[-0.1]	[-1.0]	[-1.5]	
中部4県	9,946	6,695	794	197	1,003	1,257	
[前月比]	[-2.1]	[-0.1]	[-4.2]	[-0.5]	[-5.6]	[-8.0]	
中部圏	6,017	3,262	295	346	447	1,667	
[前月比]	[0.1]	[2.1]	[-6.3]	[3.6]	[-1.5]	[-2.6]	
近畿圏	103,037	75,173	5,827	883	4,304	16,850	
[前月比]	[-1.1]	[-0.8]	[-4.2]	[0.1]	[-2.1]	[-1.3]	
中国	4,543	2,996	487	82	238	740	
[前月比]	[-1.3]	[-2.0]	[-0.8]	[5.1]	[2.6]	[-0.8]	
四国	2,006	1,163	231	68	140	404	
[前月比]	[2.4]	[4.6]	[5.0]	[0.0]	[-9.7]	[0.0]	
九州	36,180	28,360	1,953	387	918	4,562	
[前月比]	[1.1]	[1.6]	[-0.3]	[-2.5]	[1.8]	[-1.4]	