

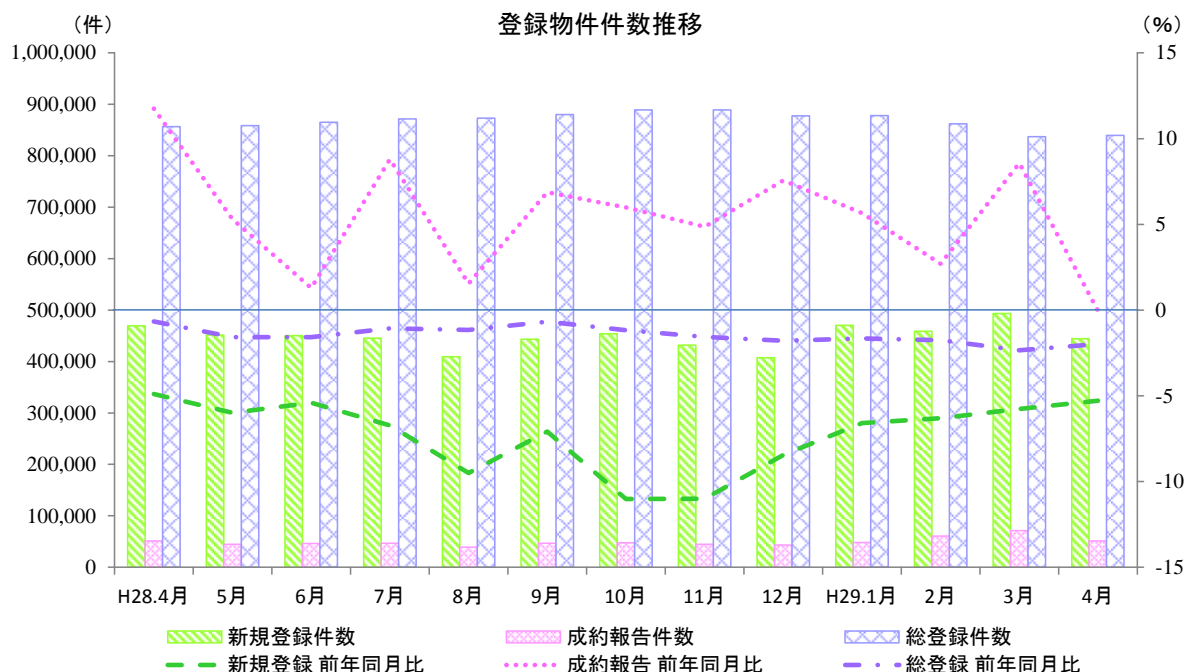
指定流通機構の活用状況について (平成29年4月分)

平成29年5月19日(金)
公益財団法人不動産流通推進センター
不動産流通センター研究所
小川・麻
TEL: 03-5843-2065

* 当センターのホームページでご覧いただけます。URL <http://www.retpc.jp>

1. 概況

平成29年4月の指定流通機構の活用状況を見てみると、新規登録件数は前月比でふたたびマイナスに転じ、前年同月比では14ヶ月連続してマイナスとなり、444,391件となった。成約報告件数は前月比でふたたびマイナスに転じ、前年同月比では27ヶ月ぶりにマイナスで、50,912件となった。総登録件数については前月比でふたたびプラスに転じ、前年同月比では13ヶ月連続してマイナスで、839,485件となった。

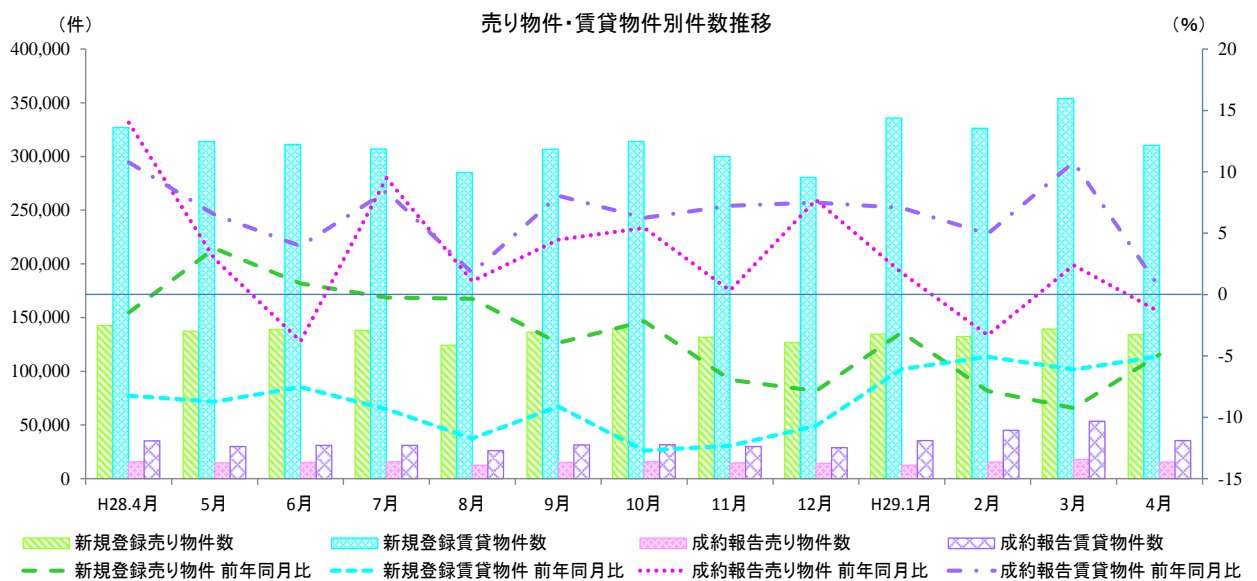


	H28.4月	5月	6月	7月	8月	9月	10月	11月	12月	H29.1月	2月	3月	4月
新規登録件数(件)	469,197	451,087	450,048	445,015	409,084	443,021	453,515	431,790	407,075	470,025	458,593	493,287	444,391
前年同月比(%)	▲4.9	▲6.0	▲5.4	▲6.7	▲9.5	▲7.1	▲11.0	▲11.0	▲8.5	▲6.6	▲6.3	▲5.8	▲5.3
前月比(%)	▲10.4	▲3.9	▲0.2	▲1.1	▲8.1	8.3	2.4	▲4.8	▲5.7	15.5	▲2.4	7.6	▲9.9
成約報告件数(件)	50,938	44,468	45,803	46,591	38,649	46,358	47,219	44,601	43,072	47,837	60,493	71,033	50,912
前年同月比(%)	11.8	5.3	1.3	8.8	1.5	6.9	6.0	4.9	7.6	5.7	2.7	8.6	▲0.1
前月比(%)	▲22.2	▲12.7	3.0	1.7	▲17.0	19.9	1.9	▲5.5	▲3.4	11.1	26.5	17.4	▲28.3
総登録件数(件)	856,496	858,591	864,744	871,593	873,166	879,862	888,688	889,091	877,340	877,684	861,882	836,869	839,485
前年同月比(%)	▲0.7	▲1.6	▲1.6	▲1.1	▲1.2	▲0.7	▲1.2	▲1.6	▲1.8	▲1.7	▲1.8	▲2.3	▲2.0
前月比(%)	▲0.0	0.2	0.7	0.8	0.2	0.8	1.0	0.0	▲1.3	0.0	▲1.8	▲2.9	0.3

2. 売り・賃貸別物件数

平成29年4月の売り物件数をみると、新規登録件数は前年同月比で11ヶ月連続してマイナスとなり、前月比でふたたびマイナスに転じた。成約報告件数は前年同月比でふたたびマイナスに転じ、前月比で2ヶ月ぶりにマイナスとなった。総登録件数は前年同月比で6ヶ月連続してマイナスとなり、前月比で2ヶ月連続してマイナスとなった。

平成29年4月の賃貸物件数をみると、新規登録件数は前年同月比で16ヶ月連続してマイナスとなり、前月比でふたたびマイナスに転じた。成約報告件数は前年同月比で13ヶ月連続してプラスとなり、前月比で3ヶ月ぶりにマイナスとなった。総登録件数は前年同月比で24ヶ月連続してマイナスとなり、前月比で5ヶ月ぶりにプラスとなった。



売り物件・賃貸物件別件数

新規登録件数	444,391 件	前年同月比 ▲ 5.3 %	前月比 ▲ 9.9 %
売り物件数	134,063 件	前年同月比 ▲ 5.9 %	前月比 ▲ 3.8 %
賃貸物件数	310,328 件	前年同月比 ▲ 5.0 %	前月比 ▲ 12.3 %
成約報告件数	50,912 件	前年同月比 ▲ 0.1 %	前月比 ▲ 28.3 %
売り物件	15,530 件	前年同月比 ▲ 1.4 %	前月比 ▲ 12.3 %
賃貸物件	35,382 件	前年同月比 0.6 %	前月比 ▲ 33.7 %
総登録件数	839,485 件	前年同月比 ▲ 2.0 %	前月比 0.3 %
売り物件	313,994 件	前年同月比 ▲ 0.3 %	前月比 ▲ 0.8 %
賃貸物件	525,491 件	前年同月比 ▲ 3.0 %	前月比 1.0 %
月間総検索数	38,663,061 件	前年同月比 10.6 %	前月比 ▲ 7.1 %

凡例: ↑ 10% ~ ↗ 3% ~ 10% → -3% ~ 3% ↘ -10% ~ -3% ↓ ~ -10%

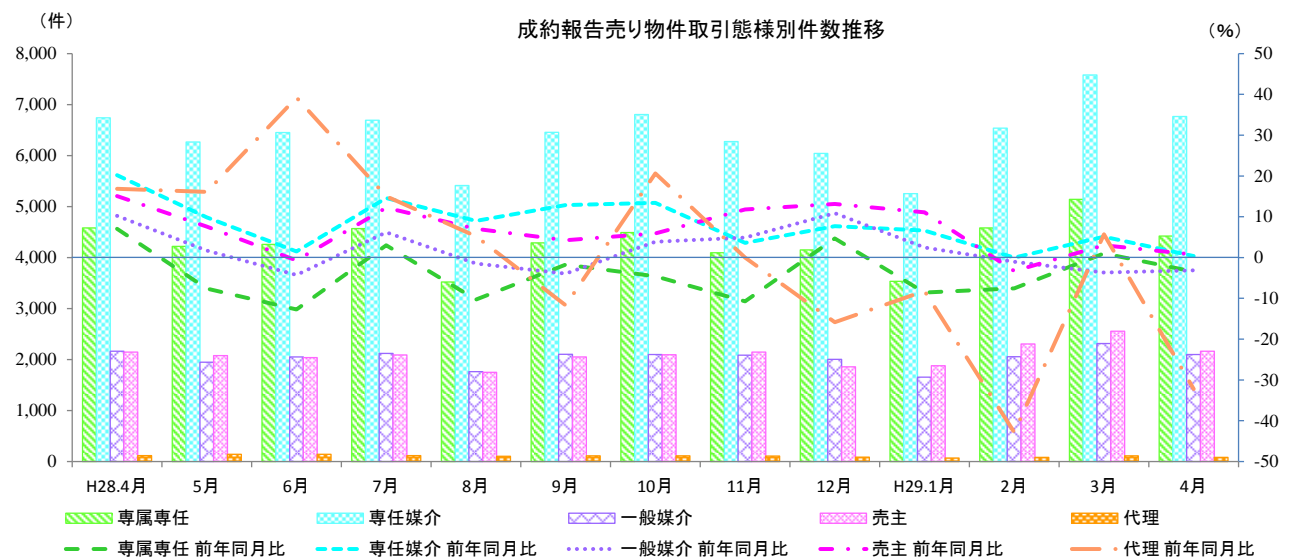
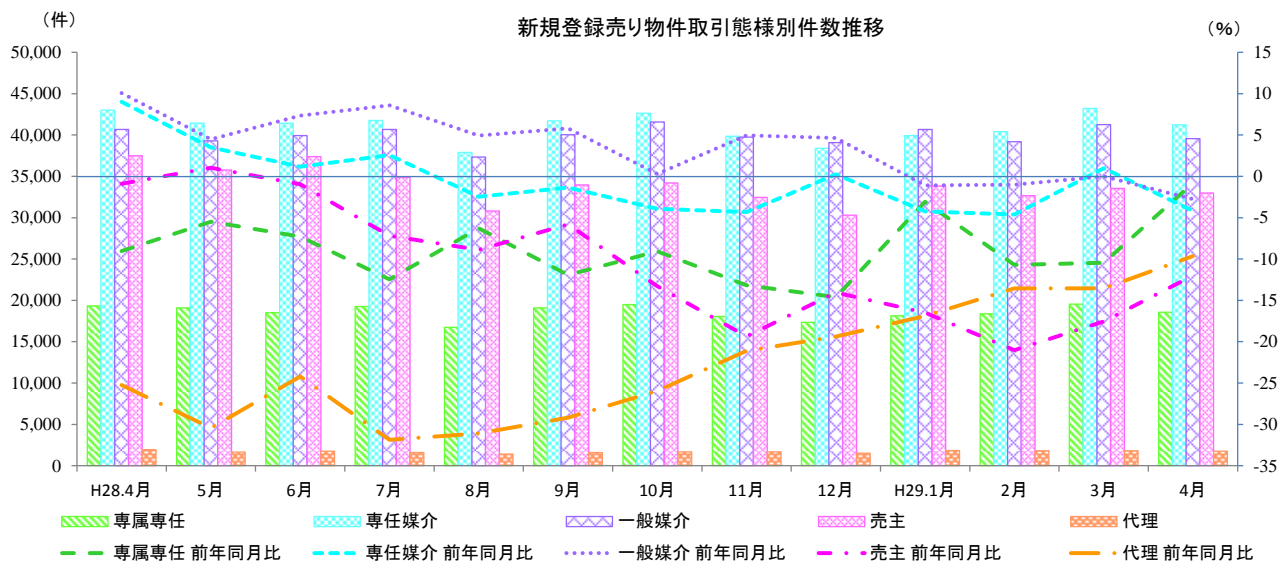
3. 売り物件の取引態様別物件数

平成29年4月の新規登録売り物件の取引態様別をみると、専任媒介は30.7%を占め、続いて一般媒介は29.5%を占めている。成約報告売り物件の取引態様別をみると、専任媒介は43.6%を占め、続いて専属専任は28.5%を占めている。

売り物件の取引態様別件数

	取引態様	H29年4月	構成比	前年同月比	前月比
新規登録件数	媒介契約	99,331件	74.1%	▲3.6%	▲4.5%
	専属専任	18,559件	13.8%	▲4.0%	▲5.1%
	専任媒介	41,220件	30.7%	▲4.2%	▲4.6%
	一般媒介	39,552件	29.5%	▲2.7%	▲4.1%
	売主	32,981件	24.6%	▲12.0%	▲1.7%
	代理	1,751件	1.3%	▲9.6%	▲2.7%
成約報告件数	媒介契約	13,288件	85.6%	▲1.5%	▲11.6%
	専属専任	4,422件	28.5%	▲3.4%	▲14.0%
	専任媒介	6,769件	43.6%	0.4%	▲10.7%
	一般媒介	2,097件	13.5%	▲3.1%	▲9.4%
	売主	2,162件	13.9%	0.7%	▲15.4%
	代理	80件	0.5%	▲32.2%	▲27.9%

凡例: ▲ 10% ~ ▲ 3% ~ 10% ▲ -3% ~ 3% ▲ -10% ~ -3% ▼ ~ -10%



指定流通機構実態調査集計、総括表 新規登録件数

		総 数	物 件 種 別				
			マンション	一 戸 建	土 地	住宅外全部	住宅外一部
全	総計件数	444,391	305,262	58,198	45,511	11,519	23,901
	[前月比]	[-9.9]	[-12.3]	[-3.5]	[-7.4]	[-2.9]	[0.1]
売	総 計	134,063	38,477	43,680	44,455	6,875	576
	[前月比]	[-3.8]	[-3.3]	[-0.7]	[-7.5]	[-1.6]	[10.8]
り	北海道	2,350	720	562	821	230	17
	[前月比]	[-5.4]	[-2.6]	[1.1]	[-8.3]	[-18.1]	[41.7]
地	東北	2,930	618	1,069	1,109	127	7
	[前月比]	[0.2]	[-2.7]	[0.5]	[0.2]	[9.5]	[600.0]
域	関東甲信越	5,161	468	1,649	2,739	294	11
	[前月比]	[4.7]	[-16.9]	[7.7]	[6.8]	[10.5]	[120.0]
物	首都圏	46,154	21,450	14,039	8,049	2,334	282
	[前月比]	[-0.9]	[-3.2]	[0.6]	[1.4]	[3.2]	[9.3]
別	中部4県	5,804	674	1,797	3,055	271	7
	[前月比]	[-3.4]	[-1.6]	[-3.6]	[-4.5]	[8.8]	[-12.5]
件	中部圏	6,566	1,434	1,985	2,860	271	16
	[前月比]	[-3.3]	[-2.2]	[-6.0]	[0.5]	[-23.2]	[23.1]
取	近畿圏	19,954	5,739	8,855	4,490	751	119
	[前月比]	[-4.9]	[-7.8]	[-0.4]	[-10.2]	[-4.2]	[58.7]
引	中国	8,359	691	2,821	4,520	320	7
	[前月比]	[-6.8]	[-1.8]	[0.3]	[-11.7]	[-3.6]	[133.3]
態	四国	7,856	408	1,964	4,741	732	11
	[前月比]	[-6.7]	[18.3]	[0.1]	[-12.6]	[8.4]	[-8.3]
様	九州	28,929	6,275	8,939	12,071	1,545	99
	[前月比]	[-7.6]	[-0.2]	[-3.2]	[-13.8]	[-7.4]	[-25.6]
別	専属専任	18,559	6,344	5,417	5,734	994	70
	[前月比]	[-5.1]	[-6.3]	[-3.6]	[-6.6]	[3.5]	[4.5]
取	専任媒介	41,220	12,333	11,760	14,962	2,007	158
	[前月比]	[-4.6]	[-4.2]	[-0.7]	[-8.1]	[-3.5]	[5.3]
引	一般媒介	39,552	8,980	11,393	16,215	2,775	189
	[前月比]	[-4.1]	[-4.5]	[1.6]	[-8.0]	[-2.4]	[13.9]
態	売主	32,981	10,234	14,737	6,984	894	132
	[前月比]	[-1.7]	[0.5]	[-1.3]	[-5.7]	[-0.9]	[10.0]
様	代理	1,751	586	373	560	205	27
	[前月比]	[-2.7]	[1.9]	[0.5]	[-11.5]	[1.0]	[58.8]
物	総 計	310,328	266,785	14,518	1,056	4,644	23,325
	[前月比]	[-12.3]	[-13.5]	[-11.0]	[0.1]	[-4.9]	[-0.1]
賃	北海道	583	468	53	7	16	39
	[前月比]	[-37.8]	[-40.5]	[-17.2]	[0.0]	[-5.9]	[-38.1]
賃	東北	1,831	1,458	161	8	29	175
	[前月比]	[-26.6]	[-29.5]	[-4.7]	[-38.5]	[-17.1]	[-17.1]
地	関東甲信越	2,799	2,139	320	31	78	231
	[前月比]	[-8.0]	[-6.0]	[-13.7]	[19.2]	[-18.8]	[-16.0]
域	首都圏	176,874	157,768	5,239	260	1,476	12,131
	[前月比]	[-13.7]	[-15.0]	[-10.3]	[22.6]	[-7.5]	[4.4]
物	中部4県	4,784	3,396	480	55	311	542
	[前月比]	[-6.8]	[-9.4]	[-7.5]	[41.0]	[16.5]	[-2.9]
賃	中部圏	2,075	1,457	138	80	98	302
	[前月比]	[-5.0]	[-5.5]	[4.5]	[63.3]	[-10.1]	[-14.4]
件	近畿圏	47,716	39,497	3,060	180	1,010	3,969
	[前月比]	[-10.5]	[-11.7]	[-11.0]	[-13.0]	[-8.5]	[3.0]
別	中国	7,883	5,996	823	50	284	730
	[前月比]	[-5.9]	[-4.6]	[-12.4]	[-10.7]	[21.9]	[-15.0]
物	四国	4,572	2,777	800	79	383	533
	[前月比]	[-3.2]	[1.0]	[-6.9]	[-26.2]	[-11.3]	[-7.6]
賃	九州	61,211	51,829	3,444	306	959	4,673
	[前月比]	[-11.1]	[-11.5]	[-13.5]	[-9.7]	[-3.5]	[-6.2]

* 前月比欄の数値は、対前月増減率である。

* 「関東甲信越」は、茨城県・栃木県・群馬県・新潟県・山梨県・長野県、「首都圏」は、東京都・千葉県・埼玉県・神奈川県、「中部圏」は、愛知県・岐阜県・三重県、「中部4県」は、富山県・石川県・福井県・静岡県、「近畿圏」は、大阪府・京都府・兵庫県・滋賀県・奈良県・和歌山県をいう。

指定流通機構実態調査 売り物件・新規登録件数 時系列表

	28年4月	28年5月	28年6月	28年7月	28年8月	28年9月	28年10月	28年11月	28年12月	29年1月	29年2月	29年3月	29年4月	一年間計	
	件数 (前月比) [前年比]	件数 (前月比) [前年比]	件数 (前月比) [前年比]	件数 (前月比) [前年比]	件数 (前月比) [前年比]	件数 (前月比) [前年比]	件数 (前月比) [前年比]	件数 (前月比) [前年比]	件数 (前月比) [前年比]	件数 (前月比) [前年比]	件数 (前月比) [前年比]	件数 (前月比) [前年比]	件数 (前月比) [前年比]	件数 (前月比) [前年比]	件数 (構成比)
総数	142,441 (-2.8) [3.8]	137,219 (-3.7) [0.9]	138,960 (1.3) [-0.2]	138,128 (-0.6) [-0.3]	124,146 (-10.1) [-3.9]	136,359 (9.8) [-2.2]	139,555 (2.3) [-6.9]	131,754 (-5.6) [-7.9]	126,636 (-3.9) [-3.1]	134,394 (6.1) [-7.8]	132,381 (-1.5) [-9.2]	139,379 (5.3) [-4.9]	134,063 (-3.8) [-5.9]	1,612,974	
地域	北海道	2,666 (2.5) [-14.1]	2,505 (-6.0) [-12.0]	2,614 (4.4) [-14.3]	2,734 (4.6) [-11.5]	2,561 (-6.3) [-7.7]	2,693 (5.2) [-6.8]	2,451 (-9.0) [-11.7]	2,291 (-6.5) [-11.2]	2,035 (-11.2) [-3.0]	2,309 (13.5) [-7.6]	2,184 (-5.4) [-9.5]	2,483 (13.7) [-4.5]	2,350 (-5.4) [-11.9]	29,210 (1.8)
	東北	3,276 (8.7) [6.7]	2,842 (-13.2) [4.4]	3,078 (8.3) [-4.2]	3,078 (0.0) [0.3]	2,660 (-13.6) [-6.1]	2,965 (11.5) [11.0]	3,140 (5.9) [-4.1]	2,633 (-16.1) [-11.7]	2,407 (-8.6) [-9.8]	2,625 (9.1) [-18.2]	2,678 (2.0) [-8.6]	2,923 (9.1) [-3.0]	2,930 (0.2) [-10.6]	33,959 (2.1)
	関東甲信越	4,912 (-1.5) [-16.9]	4,878 (-0.7) [-7.5]	5,516 (13.1) [-2.5]	5,458 (-1.1) [7.5]	4,682 (-14.2) [-0.4]	5,124 (9.4) [-1.5]	5,157 (0.6) [-3.7]	4,941 (-4.2) [-2.9]	4,170 (-15.6) [-3.3]	4,857 (16.5) [-1.0]	4,884 (0.6) [-2.4]	4,930 (0.9) [-1.1]	5,161 (4.7) [5.1]	59,758 (3.7)
	首都圏	54,029 (-4.6) [1.6]	49,023 (-9.3) [-2.9]	49,504 (1.0) [-6.5]	47,636 (-3.8) [-9.1]	39,948 (-16.1) [-13.7]	47,014 (17.7) [-8.5]	48,159 (2.4) [-14.6]	44,761 (-7.1) [-18.6]	40,113 (-10.4) [-14.3]	44,769 (11.6) [-17.9]	45,696 (2.1) [-19.9]	46,565 (1.9) [-17.7]	46,154 (-0.9) [-14.6]	549,342 (34.1)
	中部4県	6,249 (-5.5) [6.9]	6,095 (-2.5) [4.9]	6,739 (10.6) [7.9]	6,214 (-7.8) [3.3]	6,309 (1.5) [10.7]	5,929 (-6.0) [-7.9]	5,922 (-0.1) [-5.5]	6,206 (4.8) [8.4]	5,651 (-8.9) [7.0]	6,048 (7.0) [-6.3]	5,574 (-7.8) [-7.8]	6,006 (7.8) [-9.2]	5,804 (-3.4) [-7.1]	72,497 (4.5)
	中部圏	6,495 (-5.0) [0.0]	6,468 (-0.4) [5.2]	6,742 (4.2) [1.5]	6,541 (-3.0) [0.0]	5,925 (-9.4) [-1.9]	6,450 (8.9) [-1.4]	6,761 (4.8) [-4.3]	6,364 (-5.9) [-0.3]	6,241 (-1.9) [10.2]	6,539 (4.8) [-5.1]	6,553 (0.2) [-3.7]	6,790 (3.6) [-0.7]	6,566 (-3.3) [1.1]	77,940 (4.8)
	近畿圏	19,845 (-2.0) [4.3]	19,270 (-2.9) [-2.8]	19,474 (1.1) [-1.2]	20,657 (6.1) [6.8]	17,562 (-15.0) [-1.3]	20,217 (15.1) [-2.5]	20,942 (3.6) [0.3]	19,137 (-8.6) [-6.3]	17,720 (-7.4) [1.6]	19,723 (11.3) [-6.0]	19,799 (0.4) [-1.8]	20,975 (5.9) [3.5]	19,954 (-4.9) [0.5]	235,430 (14.6)
	中国	8,319 (-0.2) [-4.8]	8,599 (3.4) [-3.1]	8,139 (-5.3) [-6.0]	8,084 (-0.7) [-14.0]	7,773 (-3.8) [-10.4]	8,447 (8.7) [-5.6]	8,657 (2.5) [-7.9]	7,876 (-9.0) [-10.9]	8,855 (12.4) [4.8]	8,832 (-0.3) [2.1]	8,183 (-7.3) [-4.7]	8,969 (9.6) [7.6]	8,359 (-6.8) [0.5]	100,773 (6.2)
	四国	7,232 (1.8) [32.6]	6,981 (-3.5) [45.4]	7,072 (1.3) [38.7]	7,503 (6.1) [50.1]	7,131 (-5.0) [23.9]	7,290 (2.2) [27.5]	7,641 (4.8) [16.2]	7,826 (2.4) [30.7]	7,925 (1.3) [14.5]	8,272 (4.4) [12.9]	7,497 (-9.4) [14.8]	8,418 (12.3) [18.5]	7,856 (-6.7) [8.6]	91,412 (5.7)
	九州	29,418 (-2.6) [11.2]	30,558 (3.9) [4.7]	30,082 (-1.6) [7.2]	30,223 (0.5) [5.4]	29,595 (-2.1) [3.2]	30,230 (2.1) [4.8]	30,725 (1.6) [-3.9]	29,719 (-3.3) [-0.9]	31,519 (6.1) [1.6]	30,420 (-3.5) [0.1]	29,333 (-3.6) [-3.3]	31,320 (6.8) [3.7]	28,929 (-7.6) [-1.7]	362,653 (22.5)
取引態様	専属専任媒介	19,335 (-1.9) [-5.5]	19,091 (-1.3) [-7.3]	18,501 (-3.1) [-12.5]	19,244 (4.0) [-6.3]	16,718 (-13.1) [-11.9]	19,080 (14.1) [-9.1]	19,483 (2.1) [-13.2]	18,043 (-7.4) [-14.6]	17,342 (-3.9) [-3.1]	18,136 (4.6) [-10.7]	18,358 (1.2) [-10.4]	19,550 (6.5) [-0.8]	18,559 (-5.1) [-4.0]	222,105 (13.8)
	引専任媒介	43,011 (0.5) [9.0]	41,437 (-3.7) [3.5]	41,404 (-0.1) [1.2]	41,757 (0.9) [2.6]	37,892 (-9.3) [-2.5]	41,705 (10.1) [-1.3]	42,624 (2.2) [-3.9]	39,848 (-6.5) [-4.3]	38,394 (-3.6) [0.2]	39,936 (4.0) [-4.2]	40,393 (1.1) [-4.6]	43,225 (7.0) [1.0]	41,220 (-4.6) [-4.2]	489,835 (30.4)
	一般媒介	40,670 (-1.4) [10.1]	39,288 (-3.4) [4.5]	39,917 (1.6) [7.3]	40,661 (1.9) [8.6]	37,332 (-8.2) [4.9]	40,033 (7.2) [5.8]	41,573 (3.8) [0.3]	39,742 (-4.4) [5.0]	39,077 (-1.7) [4.6]	40,668 (4.1) [-1.1]	39,180 (-3.7) [-1.0]	41,262 (5.3) [0.0]	39,552 (-4.1) [-2.7]	478,285 (29.7)
	別売主	37,487 (-7.9) [-0.9]	35,766 (-4.6) [1.0]	37,392 (4.5) [-0.9]	34,882 (-6.7) [-7.2]	30,812 (-11.7) [-8.9]	33,959 (10.2) [-5.8]	34,208 (0.7) [-13.3]	32,446 (-5.2) [-19.4]	30,308 (-6.6) [-14.0]	33,839 (11.7) [-16.5]	32,657 (-3.5) [-21.0]	33,543 (2.7) [-17.6]	32,981 (-1.7) [-12.0]	402,793 (25.0)
	代理	1,938 (-6.9) [-25.2]	1,637 (-15.5) [-30.4]	1,746 (6.7) [-24.2]	1,584 (-9.3) [-31.9]	1,392 (-12.1) [-31.1]	1,582 (13.6) [-29.2]	1,667 (5.4) [-25.9]	1,675 (0.5) [-21.1]	1,515 (-9.6) [-19.4]	1,815 (19.8) [-16.9]	1,793 (-1.2) [-13.5]	1,799 (0.3) [-13.6]	1,751 (-2.7) [-9.6]	19,956 (1.2)
物件種類	マンション	44,003 (-6.0) [10.7]	40,463 (-8.0) [3.2]	38,530 (-4.8) [-4.7]	38,118 (-1.1) [-4.5]	33,100 (-13.2) [-10.6]	38,029 (14.9) [-7.4]	39,567 (4.0) [-9.6]	36,241 (-8.4) [-15.6]	34,765 (-4.1) [-10.2]	38,080 (9.5) [-13.4]	38,349 (0.7) [-17.1]	39,809 (3.8) [-14.9]	38,477 (-3.3) [-12.6]	453,528 (28.1)
	一戸建	42,602 (-0.1) [0.1]	42,387 (-0.5) [-1.1]	45,807 (8.1) [5.8]	44,742 (-2.3) [3.2]	39,967 (-10.7) [0.4]	43,600 (9.1) [1.9]	44,176 (1.3) [-4.2]	43,142 (-2.3) [-1.2]	40,181 (-6.9) [2.6]	43,117 (7.3) [-1.4]	43,127 (0.0) [-0.6]	43,978 (2.0) [3.1]	43,680 (-0.7) [2.5]	517,904 (32.1)
	土地	48,752 (-0.6) [0.7]	47,278 (-3.0) [-0.4]	47,560 (0.6) [-2.4]	48,026 (1.0) [-0.3]	44,331 (-7.7) [-3.2]	47,493 (7.1) [-1.6]	48,000 (1.1) [-7.7]	45,100 (-6.0) [-6.7]	44,786 (-0.7) [-1.7]	45,673 (2.0) [-9.5]	43,701 (-4.3) [-9.4]	48,085 (10.0) [-2.0]	44,455 (-7.5) [-8.8]	554,488 (34.4)
	住宅外(全部)	6,335 (-7.5) [5.3]	6,429 (1.5) [8.0]	6,392 (-0.6) [2.3]	6,680 (4.5) [2.3]	6,199 (-7.2) [1.9]	6,651 (7.3) [0.4]	7,152 (7.5) [1.1]	6,643 (-7.1) [-2.0]	6,337 (-4.6) [3.0]	6,917 (9.2) [6.8]	6,694 (-3.2) [-1.3]	6,987 (4.4) [2.0]	6,875 (-1.6) [8.5]	79,956 (5.0)
	住宅外(一部)	749 (-37.0) [38.4]	662 (-11.6) [37.3]	671 (1.4) [11.6]	562 (-16.2) [-4.6]	549 (-2.3) [2.8]	586 (6.7) [-3.0]	660 (12.6) [-36.8]	628 (-4.8) [-50.5]	567 (-9.7) [-48.5]	607 (7.1) [-49.9]	510 (-16.0) [-58.0]	520 (2.0) [-56.3]	576 (10.8) [-23.1]	7,098 (0.4)

※ 構成比は、四捨五入による端数処理のため内数の合計が100%にならないことがある

指定流通機構実態調査集計・総括表 地域別取引態様別売物件月間新規登録件数

地域	取引態様	総数	物件種別				
			マンション	一戸建	土地	住宅外全部	住宅外一部
北海道	専属専任 [構成比]	486 [20.7]	175 [24.3]	106 [18.9]	159 [19.4]	38 [16.5]	8 [47.1]
	専任媒介 [構成比]	1,142 [48.6]	308 [42.8]	294 [52.3]	426 [51.9]	110 [47.8]	4 [23.5]
	一般媒介 [構成比]	497 [21.1]	136 [18.9]	129 [23.0]	160 [19.5]	67 [29.1]	5 [29.4]
	売主 [構成比]	220 [9.4]	100 [13.9]	33 [5.9]	74 [9.0]	13 [5.7]	0 [0.0]
	代理 [構成比]	5 [0.2]	1 [0.1]	0 [0.0]	2 [0.2]	2 [0.9]	0 [0.0]
合計 [地域比]	2,350 [1.8]	720 [1.9]	562 [1.3]	821 [1.8]	230 [3.3]	17 [3.0]	
東北	専属専任 [構成比]	356 [12.2]	72 [11.7]	110 [10.3]	157 [14.2]	16 [12.6]	1 [14.3]
	専任媒介 [構成比]	1,169 [39.9]	268 [43.4]	414 [38.7]	431 [38.9]	52 [40.9]	4 [57.1]
	一般媒介 [構成比]	968 [33.0]	182 [29.4]	347 [32.5]	385 [34.7]	52 [40.9]	2 [28.6]
	売主 [構成比]	429 [14.6]	94 [15.2]	195 [18.2]	133 [12.0]	7 [5.5]	0 [0.0]
	代理 [構成比]	8 [0.3]	2 [0.3]	3 [0.3]	3 [0.3]	0 [0.0]	0 [0.0]
合計 [地域比]	2,930 [2.2]	618 [1.6]	1,069 [2.4]	1,109 [2.5]	127 [1.8]	7 [1.2]	
関東甲信越	専属専任 [構成比]	380 [7.4]	29 [6.2]	109 [6.6]	210 [7.7]	32 [10.9]	0 [0.0]
	専任媒介 [構成比]	1,805 [35.0]	199 [42.5]	512 [31.0]	990 [36.1]	100 [34.0]	4 [36.4]
	一般媒介 [構成比]	1,788 [34.6]	180 [38.5]	450 [27.3]	1,031 [37.6]	122 [41.5]	5 [45.5]
	売主 [構成比]	1,136 [22.0]	52 [11.1]	563 [34.1]	484 [17.7]	35 [11.9]	2 [18.2]
	代理 [構成比]	52 [1.0]	8 [1.7]	15 [0.9]	24 [0.9]	5 [1.7]	0 [0.0]
合計 [地域比]	5,161 [3.8]	468 [1.2]	1,649 [3.8]	2,739 [6.2]	298 [4.3]	11 [1.9]	
首都圏	専属専任 [構成比]	7,104 [15.4]	3,602 [16.8]	1,505 [10.7]	1,527 [19.0]	439 [18.8]	31 [11.0]
	専任媒介 [構成比]	12,305 [26.7]	5,866 [27.3]	3,058 [21.8]	2,679 [33.3]	630 [27.0]	72 [25.5]
	一般媒介 [構成比]	6,295 [13.6]	3,348 [15.6]	1,312 [9.3]	1,024 [12.7]	550 [23.6]	61 [21.6]
	売主 [構成比]	19,408 [42.1]	8,182 [38.1]	7,964 [56.7]	2,623 [32.6]	545 [23.4]	94 [33.3]
	代理 [構成比]	1,042 [2.3]	452 [2.1]	200 [1.4]	196 [2.4]	170 [7.3]	24 [8.5]
合計 [地域比]	46,154 [34.4]	21,450 [55.7]	14,039 [32.1]	8,049 [18.1]	2,334 [33.9]	282 [49.0]	
中部四県	専属専任 [構成比]	537 [9.3]	42 [6.2]	154 [8.6]	315 [10.3]	26 [9.6]	0 [0.0]
	専任媒介 [構成比]	1,979 [34.1]	311 [46.1]	563 [31.3]	1,013 [33.2]	91 [33.6]	1 [14.3]
	一般媒介 [構成比]	2,519 [43.4]	296 [43.9]	744 [41.4]	1,342 [43.9]	132 [48.7]	5 [71.4]
	売主 [構成比]	717 [12.4]	23 [3.4]	314 [17.5]	358 [11.7]	21 [7.7]	1 [14.3]
	代理 [構成比]	52 [0.9]	2 [0.3]	22 [1.2]	27 [0.9]	1 [0.4]	0 [0.0]
合計 [地域比]	5,804 [4.3]	674 [1.8]	1,797 [4.1]	3,055 [6.9]	271 [3.9]	7 [1.2]	
中部圏	専属専任 [構成比]	867 [13.2]	259 [18.1]	188 [9.5]	366 [12.8]	53 [19.6]	1 [6.3]
	専任媒介 [構成比]	2,190 [33.4]	505 [35.2]	537 [27.1]	1,070 [37.4]	72 [26.6]	6 [37.5]
	一般媒介 [構成比]	2,064 [31.4]	404 [28.2]	461 [23.2]	1,068 [37.3]	123 [45.4]	8 [50.0]
	売主 [構成比]	1,400 [21.3]	262 [18.3]	793 [39.9]	321 [11.2]	23 [8.5]	1 [6.3]
	代理 [構成比]	45 [0.7]	4 [0.3]	6 [0.3]	35 [1.2]	0 [0.0]	0 [0.0]
合計 [地域比]	6,566 [4.9]	1,434 [3.7]	1,985 [4.5]	2,860 [6.4]	271 [3.9]	16 [2.8]	
近畿圏	専属専任 [構成比]	4,826 [24.2]	1,536 [26.8]	2,112 [23.9]	982 [21.9]	176 [23.4]	20 [16.8]
	専任媒介 [構成比]	5,754 [28.8]	2,125 [37.0]	2,041 [23.0]	1,343 [29.9]	198 [26.4]	47 [39.5]
	一般媒介 [構成比]	4,310 [21.6]	1,377 [24.0]	1,618 [18.3]	1,049 [23.4]	235 [31.3]	31 [26.1]
	売主 [構成比]	4,829 [24.2]	651 [11.3]	2,998 [33.9]	1,039 [23.1]	122 [16.2]	19 [16.0]
	代理 [構成比]	235 [1.2]	50 [0.9]	86 [1.0]	77 [1.7]	20 [2.7]	2 [1.7]
合計 [地域比]	19,954 [14.9]	5,739 [14.9]	8,855 [20.3]	4,490 [10.1]	751 [10.9]	119 [20.7]	
中国	専属専任 [構成比]	1,160 [13.9]	143 [20.7]	423 [15.0]	538 [11.9]	56 [17.5]	0 [0.0]
	専任媒介 [構成比]	3,629 [43.4]	375 [54.3]	1,234 [43.7]	1,884 [41.7]	133 [41.6]	3 [42.9]
	一般媒介 [構成比]	2,592 [31.0]	154 [22.3]	863 [30.6]	1,453 [32.1]	118 [36.9]	4 [57.1]
	売主 [構成比]	887 [10.6]	13 [1.9]	290 [10.3]	572 [12.7]	12 [3.8]	0 [0.0]
	代理 [構成比]	91 [1.1]	6 [0.9]	11 [0.4]	73 [1.6]	1 [0.3]	0 [0.0]
合計 [地域比]	8,359 [6.2]	691 [1.8]	2,821 [6.5]	4,520 [10.2]	320 [4.7]	7 [1.2]	
四国	専属専任 [構成比]	564 [7.2]	38 [9.3]	150 [7.6]	328 [6.9]	48 [6.6]	0 [0.0]
	専任媒介 [構成比]	1,553 [19.8]	200 [49.0]	366 [18.6]	850 [17.9]	136 [18.6]	1 [9.1]
	一般媒介 [構成比]	5,051 [64.3]	147 [36.0]	1,114 [56.7]	3,250 [68.6]	531 [72.5]	9 [81.8]
	売主 [構成比]	657 [8.4]	23 [5.6]	331 [16.9]	285 [6.0]	17 [2.3]	1 [9.1]
	代理 [構成比]	31 [0.4]	0 [0.0]	3 [0.2]	28 [0.6]	0 [0.0]	0 [0.0]
合計 [地域比]	7,856 [5.9]	408 [1.1]	1,964 [4.5]	4,741 [10.7]	732 [10.6]	11 [1.9]	
九州	専属専任 [構成比]	2,279 [7.9]	448 [7.1]	560 [6.3]	1,152 [9.5]	110 [7.1]	9 [9.1]
	専任媒介 [構成比]	9,694 [33.5]	2,176 [34.7]	2,741 [30.7]	4,276 [35.4]	485 [31.4]	16 [16.2]
	一般媒介 [構成比]	13,468 [46.6]	2,756 [43.9]	4,355 [48.7]	5,453 [45.2]	845 [54.7]	59 [59.6]
	売主 [構成比]	3,298 [11.4]	834 [13.3]	1,256 [14.1]	1,095 [9.1]	99 [6.4]	14 [14.1]
	代理 [構成比]	190 [0.7]	61 [1.0]	27 [0.3]	95 [0.8]	6 [0.4]	1 [1.0]
合計 [地域比]	28,929 [21.6]	6,275 [16.3]	8,939 [20.5]	12,071 [27.2]	1,545 [22.5]	99 [17.2]	
全国	専属専任 [構成比]	18,559 [13.8]	6,344 [16.5]	5,417 [12.4]	5,734 [12.9]	994 [14.5]	70 [12.2]
	専任媒介 [構成比]	41,220 [30.7]	12,333 [32.1]	11,760 [26.9]	14,962 [33.7]	2,007 [29.2]	158 [27.4]
	一般媒介 [構成比]	39,552 [29.5]	8,980 [23.3]	11,393 [26.1]	16,215 [36.5]	2,775 [40.4]	189 [32.8]
	売主 [構成比]	32,981 [24.6]	10,234 [26.6]	14,737 [33.7]	6,984 [15.7]	894 [13.0]	132 [22.9]
	代理 [構成比]	1,751 [1.3]	586 [1.5]	373 [0.9]	560 [1.3]	205 [3.0]	27 [4.7]
合計	134,063	38,477	43,680	44,455	6,875	576	

※構成比とは地域内の取引態様別構成比で、地域比とは全国合計の地域別シェアである。

※構成比・地域比は、四捨五入による端数処理のため内数の合計が100%にならないことがある。

指定流通機構実態調査集計、総括表 月間成約件数

		総数	物件種別				
			マンション	一戸建	土地	住宅外全部	住宅外一部
全	総計件数	50,912	37,178	6,598	3,650	948	2,538
	[前月比]	[-28.3]	[-32.8]	[-14.5]	[-9.1]	[-6.3]	[-13.2]
売	総計	15,530	6,387	5,078	3,565	442	58
	[前月比]	[-12.3]	[-14.1]	[-11.7]	[-9.7]	[-7.1]	[-40.2]
地	北海道	757	240	215	257	45	0
	[前月比]	[-12.6]	[-18.1]	[-21.0]	[-0.4]	12.5	[-100.0]
東	東北	626	176	256	171	21	2
	[前月比]	[-11.1]	[-17.4]	[-10.2]	[-10.9]	50.0	[-]
北	関東甲信越	596	77	242	257	16	4
	[前月比]	[-9.1]	[-26.0]	[-8.0]	[-1.9]	[-38.5]	300.0
信	首都圏	5,977	3,177	1,604	1,002	164	30
	[前月比]	[-15.5]	[-14.9]	[-15.6]	[-16.2]	[-9.4]	[-49.2]
越	中部4県	553	111	193	234	14	1
	[前月比]	[-2.1]	12.1	[-1.0]	[-7.9]	[-12.5]	0.0
中	中部圏	1,307	415	420	439	32	1
	[前月比]	[-13.3]	[-15.1]	[-13.2]	[-8.2]	[-33.3]	[-88.9]
部	近畿圏	3,808	1,588	1,487	639	80	14
	[前月比]	[-8.8]	[-10.3]	[-9.5]	[-4.6]	8.1	[-26.3]
圏	中国	514	137	192	167	18	0
	[前月比]	[-11.5]	[-8.1]	[-20.0]	1.8	[-33.3]	[-100.0]
四	四国	194	51	69	68	5	1
	[前月比]	[-4.0]	[-1.9]	3.0	[-15.0]	66.7	[-]
国	九州	1,198	415	400	331	47	5
	[前月比]	[-12.8]	[-21.4]	0.0	[-16.2]	0.0	25.0
別	専属専任	4,422	2,132	1,227	923	129	11
	[前月比]	[-14.0]	[-13.4]	[-12.5]	[-18.1]	[-6.5]	0.0
取	専任媒介	6,769	3,097	1,927	1,549	179	17
	[前月比]	[-10.7]	[-12.5]	[-9.0]	[-8.2]	[-13.5]	[-39.3]
引	一般媒介	2,097	706	680	590	109	12
	[前月比]	[-9.4]	[-22.6]	0.1	[-3.8]	12.4	[-14.3]
態	売主	2,162	438	1,212	470	25	17
	[前月比]	[-15.4]	[-10.1]	[-19.5]	[-4.7]	[-19.4]	[-57.5]
様	代理	80	14	32	33	0	1
	[前月比]	[-27.9]	[-53.3]	[-30.4]	17.9	[-100.0]	[-75.0]
別	総計	35,382	30,791	1,520	85	506	2,480
	[前月比]	[-33.7]	[-35.8]	[-22.9]	28.8	[-5.6]	[-12.3]
賃	北海道	151	124	16	1	1	9
	[前月比]	[-56.6]	[-60.6]	[-27.3]	[-]	0.0	[-10.0]
地	東北	448	368	33	1	6	40
	[前月比]	[-43.3]	[-47.7]	[-29.8]	[-50.0]	20.0	21.2
東	関東甲信越	587	458	57	2	17	53
	[前月比]	[-41.4]	[-45.7]	[-31.3]	0.0	30.8	[-11.7]
北	首都圏	19,784	17,425	645	33	194	1,487
	[前月比]	[-35.3]	[-37.3]	[-20.6]	6.5	[-8.5]	[-13.0]
信	中部4県	398	263	49	5	38	43
	[前月比]	[-44.4]	[-54.3]	[-14.0]	150.0	[-5.0]	2.4
越	中部圏	282	192	18	1	23	48
	[前月比]	[-19.2]	[-22.0]	[-45.5]	0.0	[-4.2]	6.7
中	近畿圏	10,404	9,094	496	27	169	618
	[前月比]	[-26.4]	[-27.9]	[-18.3]	68.8	[-13.3]	[-13.7]
部	中国	285	219	33	2	12	19
	[前月比]	[-17.6]	[-20.1]	3.1	[-50.0]	71.4	[-34.5]
圏	四国	64	46	9	0	3	6
	[前月比]	[-39.0]	[-41.8]	[-40.0]	[-100.0]	0.0	0.0
四	九州	2,979	2,602	164	13	43	157
	[前月比]	[-40.1]	[-42.1]	[-37.6]	116.7	19.4	[-10.8]

* 成約件数は成約報告のあった件数である。

指定流通機構実態調査集計、総括表 当月末総登録件数

		総 数	物 件 種 別				
			マンション	一 戸 建	土 地	住宅外全部	住宅外一部
全 総計件数		839,485	480,639	115,379	134,323	30,308	78,836
[前月比]		[0.3]	[1.2]	[0.0]	[-1.3]	[-1.4]	[-0.9]
売 り 物 件	総 計	313,994	73,073	92,671	130,909	15,983	1,358
	[前月比]	[-0.8]	[-1.4]	[0.2]	[-1.2]	[-0.8]	[0.4]
	北海道	11,282	1,723	2,247	6,412	875	25
	[前月比]	[-2.7]	[-3.8]	[-2.0]	[-2.8]	[-2.0]	[13.6]
	東北	13,590	1,566	4,190	7,182	614	38
	[前月比]	[-0.4]	[1.0]	[-0.2]	[-0.7]	[-1.8]	[-2.6]
	関東甲信越	30,508	1,801	7,618	19,600	1,428	61
	[前月比]	[0.9]	[0.6]	[1.7]	[0.5]	[1.1]	[3.4]
	首都圏	112,340	42,740	32,863	29,985	6,067	685
	[前月比]	[-0.2]	[-1.1]	[1.5]	[-1.0]	[-0.6]	[1.8]
	中部4県	17,876	1,544	4,958	10,505	839	30
	[前月比]	[-0.5]	[-0.1]	[0.6]	[-1.2]	[2.2]	[-11.8]
	中部圏	26,929	3,901	7,328	14,541	1,100	59
	[前月比]	[-0.6]	[-2.1]	[1.1]	[-0.9]	[-1.5]	[-1.7]
	近畿圏	54,361	13,183	20,994	17,314	2,537	333
	[前月比]	[-1.9]	[-3.5]	[-0.8]	[-2.1]	[-2.3]	[2.8]
	中国	12,073	889	3,703	6,973	497	11
	[前月比]	[-1.3]	[0.7]	[0.9]	[-2.7]	[-0.4]	[-8.3]
	四国	6,991	439	1,608	4,528	406	10
	[前月比]	[-3.3]	[2.1]	[-6.4]	[-3.3]	[3.3]	[0.0]
九州	28,044	5,287	7,162	13,869	1,620	106	
[前月比]	[-1.8]	[0.2]	[-3.3]	[-1.7]	[-1.6]	[-10.9]	
取引態 様 別	専属専任	49,109	15,254	14,190	16,889	2,602	174
[前月比]	[-2.7]	[-3.2]	[-2.5]	[-2.7]	[-1.3]	[-6.5]	
専任媒介	111,605	27,387	29,159	49,359	5,192	508	
[前月比]	[-0.5]	[-0.7]	[0.3]	[-0.8]	[-0.4]	[2.0]	
一般媒介	94,873	19,845	22,368	45,839	6,357	464	
[前月比]	[-1.3]	[-2.6]	[-0.6]	[-1.1]	[-1.3]	[-1.3]	
売主	54,502	9,601	26,087	17,088	1,557	169	
[前月比]	[0.9]	[1.6]	[2.4]	[-1.5]	[-0.2]	[5.6]	
代理	3,905	986	867	1,734	275	43	
[前月比]	[1.5]	[3.0]	[1.3]	[-0.3]	[6.6]	[13.2]	
賃 物 件	総 計	525,491	407,566	22,708	3,414	14,325	77,478
[前月比]	[1.0]	[1.6]	[-1.0]	[-1.9]	[-2.0]	[-0.9]	
賃 地	北海道	1,972	1,493	119	31	63	266
[前月比]	[-6.3]	[-6.3]	[-16.8]	[-8.8]	[3.3]	[-2.6]	
東北	5,218	3,521	362	94	174	1,067	
[前月比]	[-5.0]	[-5.5]	[-5.5]	[-10.5]	[-4.4]	[-2.7]	
関東甲信越	8,907	5,758	784	240	505	1,620	
[前月比]	[0.1]	[0.8]	[-0.8]	[-2.0]	[-3.1]	[-0.9]	
首都圏	353,608	285,219	11,720	1,181	6,354	49,134	
[前月比]	[2.2]	[2.8]	[1.7]	[0.9]	[-1.4]	[-0.8]	
中部4県	8,456	5,404	728	191	1,057	1,076	
[前月比]	[-1.0]	[0.2]	[-0.7]	[-2.6]	[-6.1]	[-2.1]	
中部圏	6,465	3,623	341	339	439	1,723	
[前月比]	[1.4]	[4.3]	[2.1]	[-3.7]	[-5.8]	[-1.4]	
近畿圏	100,326	72,122	6,126	825	4,411	16,842	
[前月比]	[-0.6]	[-0.3]	[-3.5]	[-3.2]	[-1.8]	[-0.5]	
中国	4,418	2,969	432	78	247	692	
[前月比]	[0.6]	[2.5]	[-9.4]	[-6.0]	[4.7]	[-1.0]	
四国	2,003	1,132	230	68	147	426	
[前月比]	[-0.4]	[3.7]	[-8.4]	[-5.6]	[-0.7]	[-4.9]	
九州	34,118	26,325	1,866	367	928	4,632	
[前月比]	[-3.6]	[-3.8]	[-4.3]	[-1.1]	[-1.9]	[-2.3]	